

MODEL : DSU-145/145-4/145-7

List No : 0453-03

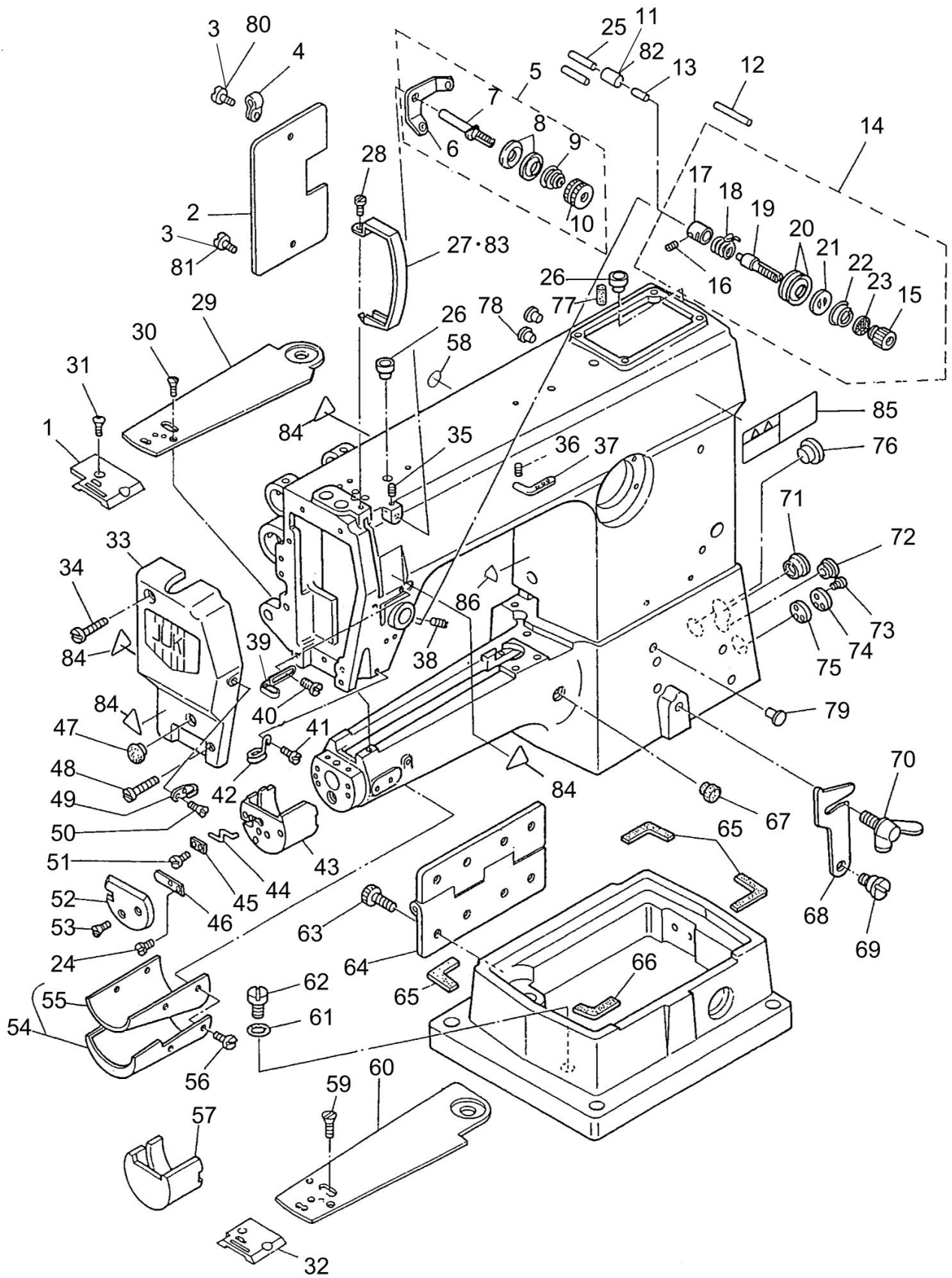
PARTS LIST

Published:05/12/2017

CONTENTS

FRAME & MISCELLANEOUS COVER COMPONENTS	1
MAIN SHAFT & NEEDLE BAR COMPONENTS	5
PRESSER BAR & UPRIGHT SHAFT & THREAD TAKE-UP COMPONENTS	7
UPPER FEED MECHANISM COMPONENTS	11
TENSION RELEASE & KNEE LIFTING BAR COMPONENTS	15
HOOK DRIVING SHAFT COMPONENTS	17
THREAD TRIMMER COMPONENTS	21
AUTOMATIC REVERSE FEED MECHANISM COMPONENTS	25
REVERSE FEED MACHANISM LEVER COMPONENTS	29
LUBRICATION COMPONENTS	31
TABLE & KNEE LIFFTER COMPONENTS	33
THREAD WINDER & BELT COVER & THREAD STAND COMPONENTS	35
ACCESSORIES PARTS COMPONENTS	37
GAUGE COMPONENTS	39
HOW TO MAKE USE OF THIS PARTS LIST	41

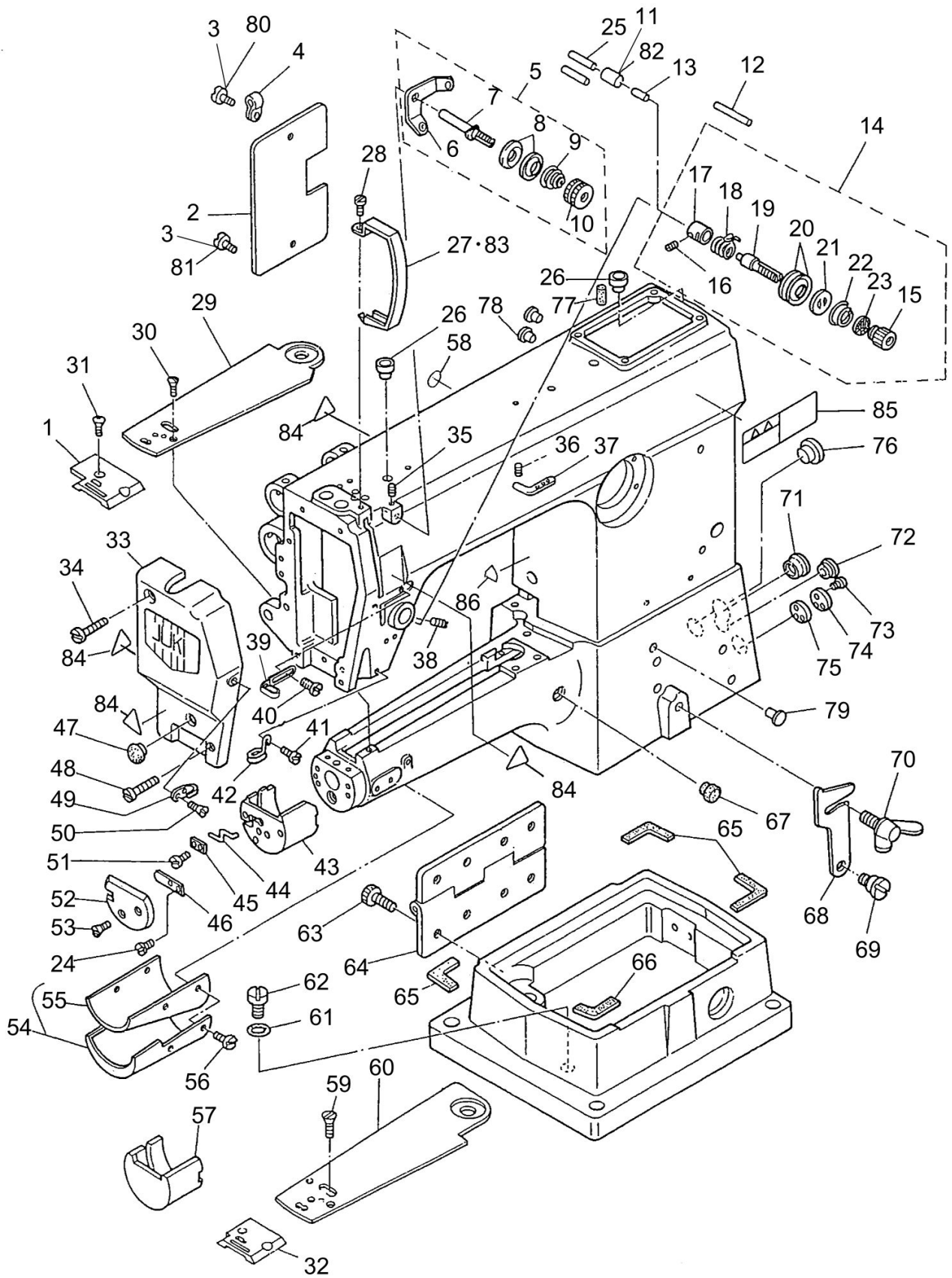
FRAME & MISCELLANEOUS COVER COMPONENTS



FRAME & MISCELLANEOUS COVER COMPONENTS

No.	Supply Code	Parts No.	Replacement	Parts name	Remarks	Choice	Step	Level	Cons	Qty	Rep. QTY
1		B1105145000		THROAT PLATE	FOR DSU-145					1	
2		B1118141H0AA		SIDE PLATE						1	
3		SS7110710SP		SCREW 11/64-40 L=7						2	
4		GES12155000		CLIP C						1	
5		D3161560EA0		TENSION POST ASM.						1	
6		D3162560E00		THREAD GUIDE				*		1	
7		D3162555B00		THREAD GUIDE				*		1	
8	R	B3214047000	22945802	BOBBIN WINDER TENSION DISC				*		2	1.00
9		D3168555H0B		TENSION SPRING NO.1				*		1	
10		B3216047000		BOBBIN WINDER TENSION NUT				*		1	
11		D3142141E0A		PIN B						1	
12		B3127127000		THREAD RELEASE AUXILIARY PIN	FOR DSU-145					1	
13		B3118552F00		TENSION RELEASING PIN						1	
14		D3111141EAA		THREAD TENSION ASM.						1	
15		11072204		TENSION NUT				*		1	
16		SS8090670SP		SCREW 9/64-40 L=5.5				*		1	
17	R	B3111126000	22945307	TENSION POST SOCKET				*		1	1.00
18	R	B3128012000	22921605	TAKE-UP SPRING				*		1	1.00
19		B3115552000		TENSION POST				*		1	
20	R	B3126012000	22921506	THREAD TENSION DISK				*		2	1.00
21		B3132552000		THREAD TENSION DISK PRESSER				*		1	
22		B3129053000		TENSION SPRING				*		1	
23		B3120125000		ROTATING STOPPER				*		1	
24		SS5060310SP		SCREW 3/32-56 L=2.8						2	
25		26028001		STOP MOTOR LEVER SPRING PIN	FOR DSU-145-4/-7					2	
26		B1156115000		RUBBER PLUG						2	
27		B1123141H0A		THREAD TAKE-UP LEVER COVER	FOR EXPORT					1	
28		SS7110510SP		SCREW 11/64-40 L=5						1	
29		D1173145E00		BED TOP COVER	FOR DSU-145-4/-7					1	
30		SS2090710TP		SCREW 9/64-40 L=7.2						1	
31		SS2110915SP		SCREW 11/64-40 L=8.5						2	
32		D1105145E00		THROAT PLATE						1	
33		B1121141HAAD		FACE PLATE ASM.						1	
34		SS7112420SP		SCREW 11/64-40 L=24						1	
35		SS8110410TP		SCREW 11/64-40 L=3.5						1	
36		SS8110410TP		SCREW 11/64-40 L=3.5	FOR DSU-145					1	
37		B1128522000		THREE HOLE THREAD EYELET	FOR DSU-145					1	
38	R	SS8150710SP	SS8150710TP	SCREW 15/64-28 L=7						1	1.00
39		D1126560E00A		ARM THREAD GUIDE A						1	
40		SS5090610SP		SCREW 9/64-40 L=6						1	
41		SS7090620TP		SCREW 9/64-40 L=6.1						1	
42		B1129141H00		THREAD GUIDE						1	
43		D1171145E00		HOOK COVER						1	
44		D2424145E00		PICKER						1	
45		D2425245E00		PICKER HOLDER PLATE						1	
46		D2426245E00		SPRING						1	

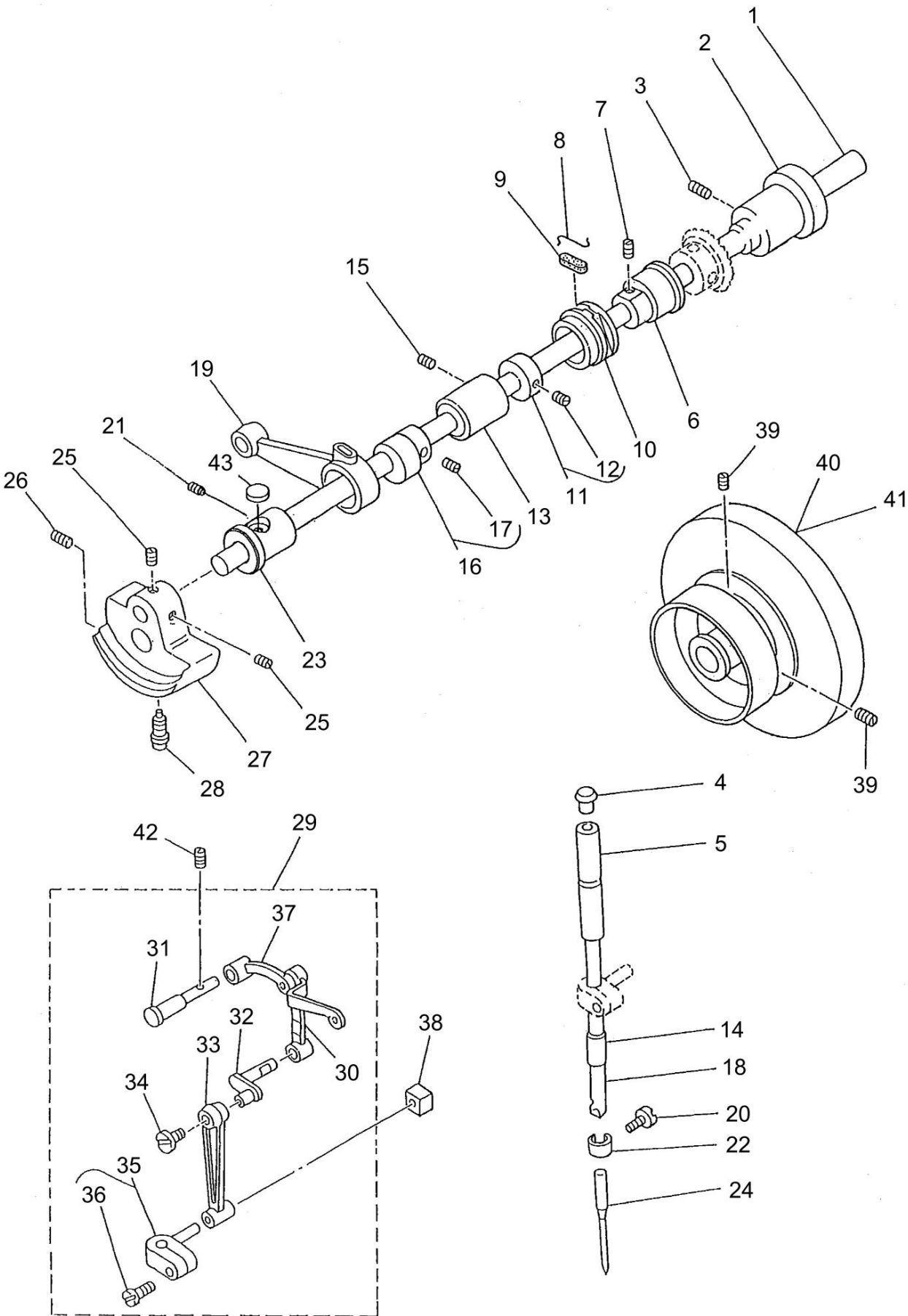
FRAME & MISCELLANEOUS COVER COMPONENTS



FRAME & MISCELLANEOUS COVER COMPONENTS

No.	Supply Code	Parts No.	Replacement	Parts name	Remarks	Choice	Step	Level	Cons	Qty	Rep. QTY
47		TA1250406R0		RUBBER PLUG D=12.5 L=4						1	
48		SS6111610SP		SCREW11/64-40L=16						1	
49		B1131141H00		FRAME THREAD GUIDE B						1	
50		SS2090710TP		SCREW 9/64-40 L=7.2						1	
51		D2435245E00		SCREW						2	
52		D2429145E00		PICKER COVER						1	
53		D2436245E00		SCREW						2	
54		B11781450A0		CYLINDER COVER ASM.						1	
55	D	B1179145000		CYLINDER COVER				*		1	
56	R	SS2090710SL	SS2090710TP	SCREW 9/64-40 L=7						4	1.00
57		B1171145000		HOOK COVER	FOR DSU-145					1	
58		22901805		GROUND MARK						1	
59	R	SS2090710SP	SS2090710TP	SCREW 9/64-40 L=7	FOR DSU-145					3	1.00
60		B1173145000		BED COVER	FOR DSU-145					1	
61		RO061180100		RUBBER RING						1	
62		SS7680870SP		SCREW 9/32 L=8.0						1	
63		SM6081552TP		SCREW M8 L=15						8	
64		B1128246000		HINGE						1	
65		B118324500A		GASKET A						3	
66		B118324500B		GASKET B						1	
67		TA1250406R0		RUBBER PLUG D=12.5 L=4						1	
68		B1117246000		HOOK						1	
69		SD0800352SP		HINGE SCREW D=8 H=3.5						1	
70		B1116246000		WING BOLT						1	
71		TA2100904R0		RUBBER PLUG						1	
72		TA1120804R0		RUBBER PLUG						1	
73		SS7060610SP		SCREW 3/32-56 L=5.5						3	
74		B1181245000		BUSHING COVER REAR						1	
75		B1182245000		BUSHING COVER GASKET						1	
76		B1180245000		PLUG						1	
77		B3517009000		OIL FELT REAR						1	
78		TA0550604R0		RUBBER PLUG						2	
79		TA0750704R0		RUBBER PLUG						1	
80		SS7110710SP		SCREW 11/64-40 L=7	FOR DSU-145-7					1	
81	R	SS7111410SP	SS7111410TP	SCREW11/64-40L=14	FOR DSU-145-7					1	1.00
82		D3142141E00		PIN B	SELECTIVE PART FOR DSU-145-4/-7					1	
83		11415205		THREAD TAKE-UP LEVER COVER(JE)	FOR USE IN LAPAN					1	
84		CM300200001		ATTENTION SEAL	FOR DSU-145-4/-7					4	
85		CM301300001		SAFETY LABEL						1	
86		CM300200001		ATTENTION SEAL	FOR DSU-145-7					1	

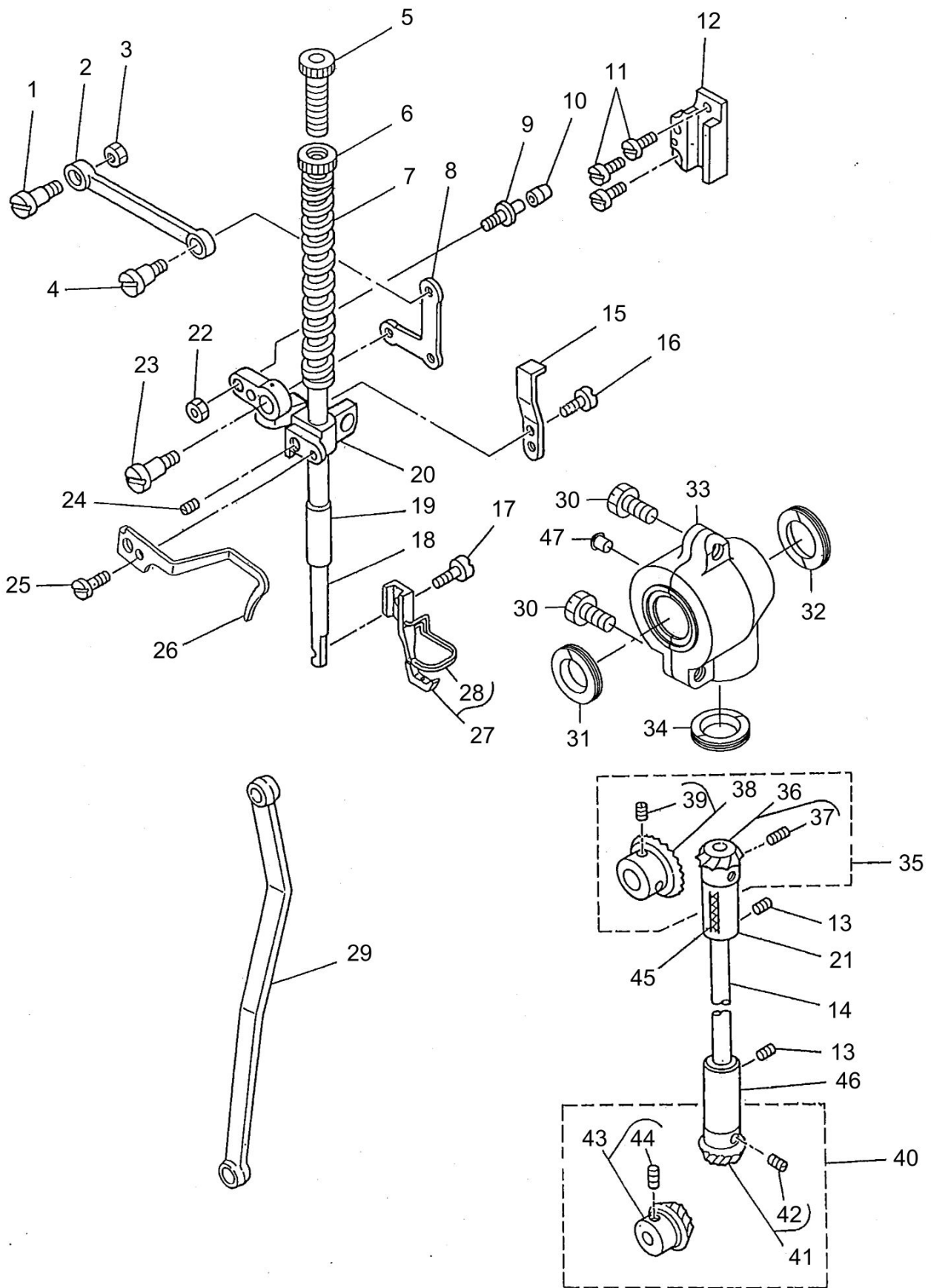
MAIN SHAFT & NEEDLE BAR COMPONENTS



MAIN SHAFT & NEEDLE BAR COMPONENTS

No.	Supply Code	Parts No.	Replacement	Parts name	Remarks	Choice	Step	Level	Cons	Qty	Rep. QTY
1		D1201141E00A		MAIN SHAFT						1	
2		21205109		REAR BUSHING						1	
3		SS8151550SP		SCREW15/64-28L=15						1	
4		22901409		NEEDLE BAR UPPER BUSH CAP						1	
5		22906101		NEEDLE BAR BUSHING UPPER						1	
6		B1211141H00		FEED ECCENTRIC CAM						1	
7	R	SS8150710SP	SS8150710TP	SCREW 15/64-28 L=7						2	1.00
8		B1213012000		FELT RETAINER						1	
9		B1212012000		OIL FELT						1	
10		B1211226000		ECCENTRIC RETAINER HOUSING						1	
11		22904155		MAIN SHAFT THRU-ST COLLAR ASM.						1	
12		SS8660610TP		SCREW 1/4-40 L=6				*		2	
13		B1203141H00		MAIN SHAFT BUSHING INTERMEDIA						1	
14		D1403141E00		NEEDLE BAR BUSHING LOWER						1	
15		SS8151550SP		SCREW15/64-28L=15						1	
16		B3001141HA0		FEED DRIVE ECCENTRIC CAM ASM.						1	
17		SS8660610TP		SCREW 1/4-40 L=6				*		2	
18		B1401145000		NEEDLE BAR						1	
19		B3002141H00		CRANK CONNECTING ROD						1	
20		SS7080510TP		SCREW 1/8-44 L=4.5						1	
21	R	SS8151150SP	SS8151150TP	SCREW 15/64-28 L=10.5						1	1.00
22		D1418141E00		NEEDLE BAR THREAD GUIDE						1	
23		B1402141H0A		ARM SHAFT BUSHING FRONT						1	
24		MDP170B2100		NEEDLE DPX17 #21						1	
25		SS8660610TP		SCREW 1/4-40 L=6						2	
26		SS8681950SP		SCREW 9/32-28 L=19						1	
27		D1206141E00		COUNTERWEIGT						1	
28		SS7681750TP		SCREW 9/32-28 L=16.5						1	
29		B1901141HA0		THREAD TAKE-UP LEVER ASM.						1	
30	R	B1901141H00	B1901141HA0	THREAD TAKE-UP LEVER				*		1	1.00
31	D	B1904115000		THREAD TAKE-UP CRANK SHAFT STU				*		1	
32	R	B1210141H00	B1901141HA0	NEEDLE BAR CRANK				*		1	1.00
33		B1408141H00		NEEDLE BAR CRANK ROD				*		1	
34	R	B1903141H00	B1903552000	END SCREW LEFT				*		1	1.00
35		B14115520A0		NEEDLE BAR CONNECTING ASM.				*		1	
36		SS6090670TP		SCREW 9/64-40 L=6				*		1	
37	R	B1902115000	B19011150A0	THREAD TAKE-UP CRANK				*		1	1.00
38		B1414555000		SLIDE BLOCK						1	
39		SS8151550SP		SCREW15/64-28L=15						2	
40		21295308		HAND WHEEL						1	
41		22860704		HAND WHEEL	FOR DSU-145					1	
42		SS8151550SP		SCREW15/64-28L=15						1	
43		B1203051000		OIL FELT						1	

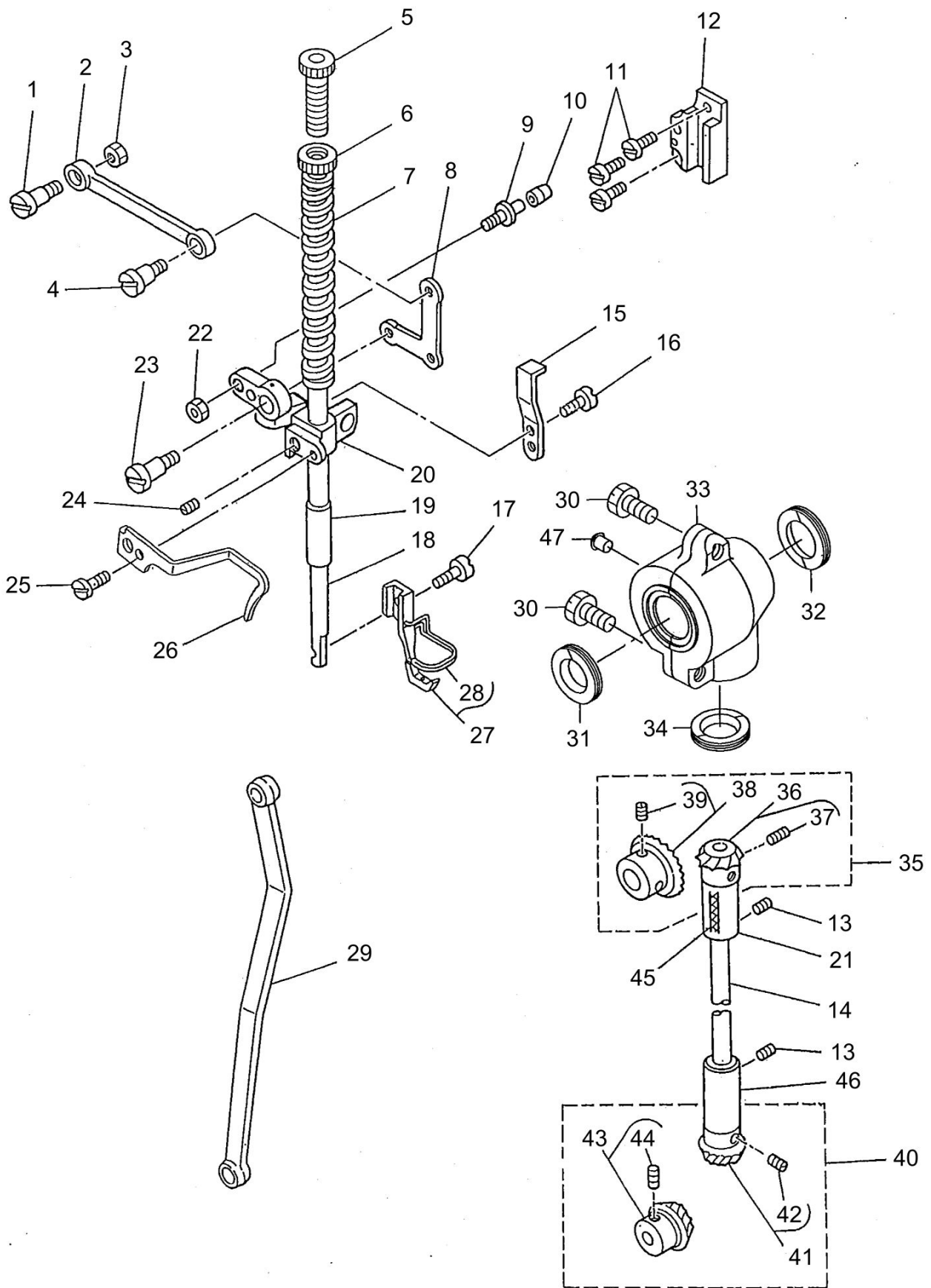
PRESSER BAR & UPRIGHT SHAFT & THREAD TAKE-UP COMPONENTS



PRESSER BAR & UPRIGHT SHAFT & THREAD TAKE-UP COMPONENTS

No.	Supply Code	Parts No.	Replacement	Parts name	Remarks	Choice	Step	Level	Cons	Qty	Rep. QTY
1		SD0850751SP		HINGE SCREW D=8.50 H=7.5						1	
2		B3005141H00		CONNECTING LINK						1	
3		NS6150310SP		NUT 15/64-28						1	
4		B3015141H00		HINGE SCREW						1	
5		B1509141H00		PRESSER SPRING REGULATOR						1	
6	R	22907604	22907554	PRESSER SPRING REGULATOR NUT						1	1.00
7		B1510141H00		PRESSER SPRING						1	
8		B3006141H00		L-SHAPED LINK						1	
9		B3032141H00		CONNECTING STUD SHAFT						1	
10		B3031141H00		CONNECTING STUD						1	
11		SS7111410TP		SCREW 11/64-40L=14						3	
12		B3020141H00		SLIDE BLOCK GUIDE						1	
13		SS8151550SP		SCREW 15/64-28L=15						2	
14		B1301145000		UPRIGHT SHAFT						1	
15		B1515141H00		LIFTING LEVER						1	
16		SS7110840SP		SCREW 11/64-40 L=7.8						2	
17	R	SS7091110SP	SS7091110TP	SCREW 9/64-40 L=10.5						1	1.00
18		B1501141H00		PRESSER BAR						1	
19		B1510155000		PRESSER BAR LOWER BUSHING						1	
20		21103304		PRESSER BAR GUIDE BRACKET						1	
21		B1302201000		BUSHING UPPER						1	
22		NS6660430SP		NUT 1/4-40						1	
23		B3015141H00		HINGE SCREW						1	
24		SS8660610TP		SCREW 1/4-40 L=6						1	
25		SS6110610TP		SCREW 11/64-40 L=6						1	
26		21286802		THREAD GUIDE						1	
27		D1525141EA0		PRESSER FOOT ASM.						1	
28		B1421141H00		FINGER GUARD				*		1	
29		B3030145000		NEEDLE BAR FRAME ROD						1	
30		SS9181520CP		SCREW 9/32-20 L=15.0						2	
31		B1310012000		OIL SEAL (A)						1	
32		B1311012000		OIL SEAL (B)						1	
33	D	B1308012000		GEAR CASE						1	
34		B1312012000		OIL SEAL (C)						1	
35		B13061550B0		GEAR & PINION ASM. UPPER						1	
36	R	B13061550C0	B13071550C0	GEAR & PINION ASM.				*		1	1.00
37		SS8660810TP		SCREW 1/4-40 L=8				*		2	
38		B13050120A0		GEAR ASM.				*		1	
39		SS8660810TP		SCREW 1/4-40 L=8				*		2	
40		B13071550D0		GEAR & PINION ASM. LOWER						1	
41		B13071550A0		GEAR ASM. LARGE				*		1	
42		SS8660810TP		SCREW 1/4-40 L=8				*		2	
43		B13081550A0		PINION ASM.				*		1	
44		SS8660810TP		SCREW 1/4-40 L=8				*		2	
45		CQ202000000		OIL WICK						.1	
46		B1303271000		BUSHING LOWER						1	

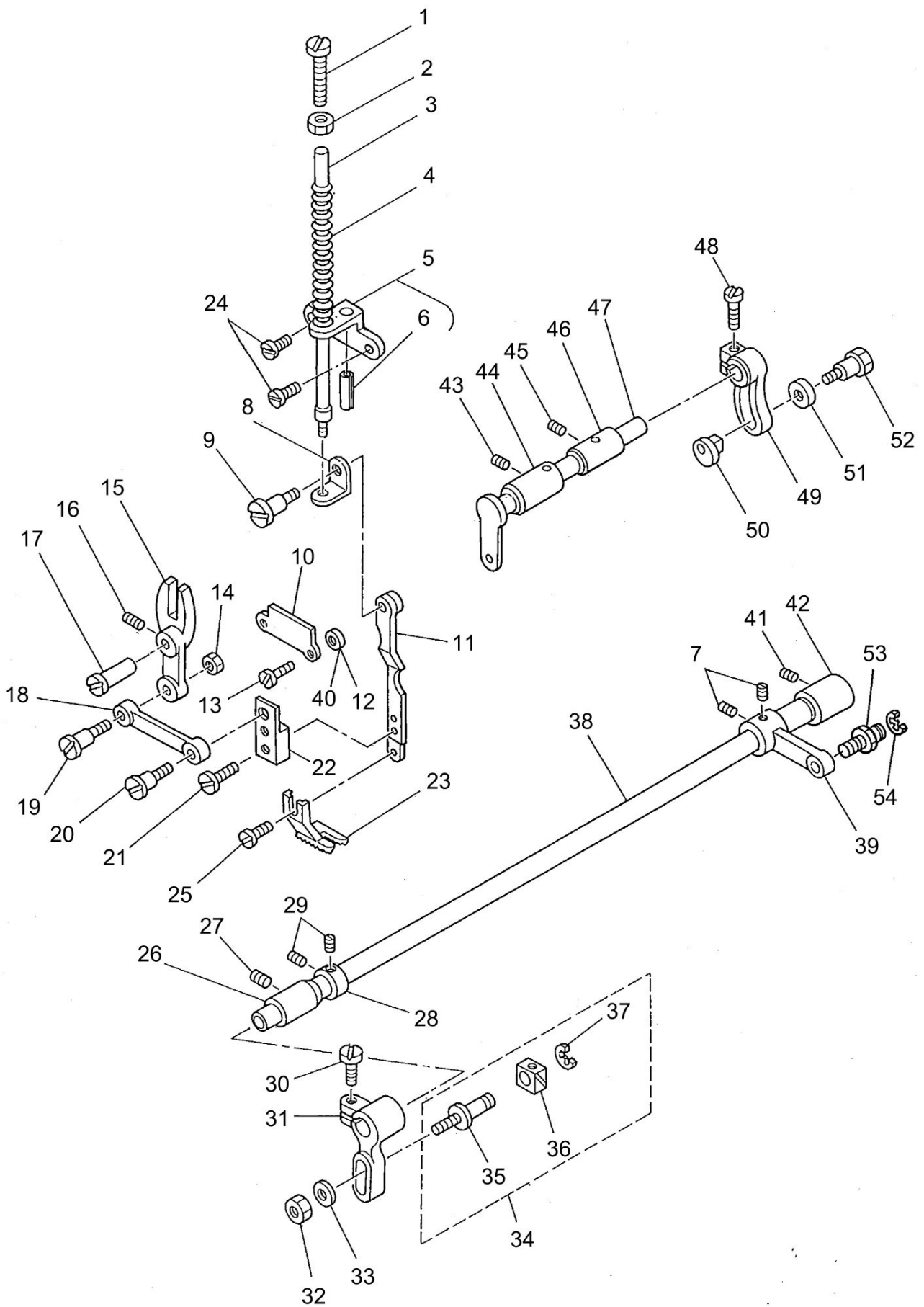
PRESSER BAR & UPRIGHT SHAFT & THREAD TAKE-UP COMPONENTS



PRESSER BAR & UPRIGHT SHAFT & THREAD TAKE-UP COMPONENTS

No.	Supply Code	Parts No.	Replacement	Parts name	Remarks	Choice	Step	Level	Cons	Qty	Rep. QTY
47		TA0550604R0		RUBBER PLUG						1	

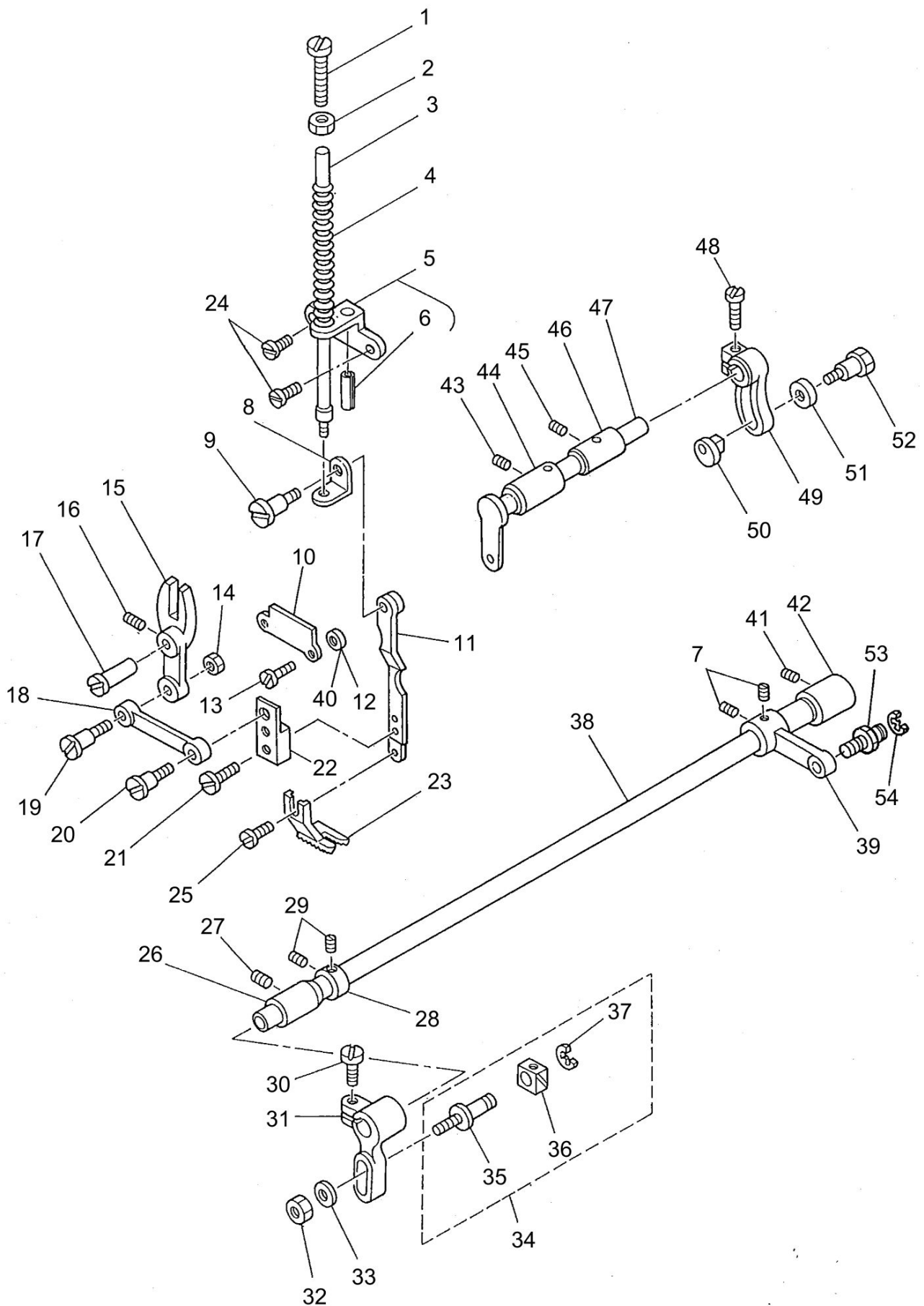
UPPER FEED MECHANISM COMPONENTS



UPPER FEED MECHANISM COMPONENTS

No.	Supply Code	Parts No.	Replacement	Parts name	Remarks	Choice	Step	Level	Cons	Qty	Rep. QTY
1		B3036141H00		ADJUSTING THUMB SCREW						1	
2		NS6680320SP		NUT 9/32-28						1	
3		B3034141H00		SPRING POLE						1	
4		B3033141H00		SPRING						1	
5		B3037141HA0		SPRING BASE ASM.						1	
6		PS0300201KP		SPRING PIN 3.0X20				*		1	
7		SS8660530TP		SCREW 1/4-40 L=4.5						1	
8		B3035141H00		RETAINING PLATE						1	
9		B3016141H00		HINGE SCREW B						1	
10		B3012141H00A		WALKING BAR DRIVING LINK						1	
11	R	B3014141H00B	40022000	L-SHAPED ROD						1	1.00
12		B3013141H0A		WASHER						2	
13	R	SS7110910SP	SS7110910TP	SCREW 11/64-40 L=8.5						2	1.00
14		NS6150310SP		NUT 15/64-28						1	
15		B3038141H00		SLIDE FORK						1	
16		SS7120910TP		SCREW 3/16-28 L=9						1	
17		21272802		BRANCH LINK SHAFT						1	
18		B3005141H00		CONNECTING LINK						1	
19		SD0850751SP		HINGE SCREW D=8.50 H=7.5						1	
20		B3015141H00		HINGE SCREW						1	
21	R	SS7091110SP	SS7091110TP	SCREW 9/64-40 L=10.5						2	1.00
22		B3017141H00B		CONNECTING LINK HOLDER						1	
23		B1526145000		PRESSURE FOOT						1	
24	R	SS7111120SP	SS7111120TP	SCREW 11/64-40 L=10.5						2	1.00
25		SS7090610SP		SCREW 9/64-40 L=6						1	
26		10106102		BUSHING						1	
27		SS8150750SP		SCREW 15/64-28 L=7						1	
28		22904155		MAIN SHAFT THRU-ST COLLAR ASM.						1	
29		SS8660610TP		SCREW 1/4-40 L=6						2	
30		SS6121210SP		SCREW 3/16-28 L=12						1	
31		B3025141H00A		CONNECTING ARM						1	
32		NS6160520SP		NUT 1/4-24						1	
33		WP0650876SD		WASHER 6.5X13X0.8						1	
34		B3023141HA0A		SLIDE BLOCK ASM.						1	
35	R	B3023141H00A	B3023141HA0A	SLIDE BLOCK PIN				*		1	1.00
36	R	B3024141H00	B3023141HA0A	SLIDE BLOCK				*		1	1.00
37		RE0400000K0		E-RING 4				*		1	
38		B3026141H00		UPPER FEED DRIVING SHAFT						1	
39		B3029145000		CRANK						1	
40		B3013141H0B		WASHER	SELECTIVE PART					2	
41		SS8150750SP		SCREW 15/64-28 L=7						1	
42		B3028141H00		BUSHING REAR						1	
43		SS8150510TP		SCREW 15/64-28 L=4.7						1	
44		B3011141H0A		BUSHING FRONT						1	
45		SS8150510TP		SCREW 15/64-28 L=4.7						1	
46		B3011141H00		BUSHING						1	

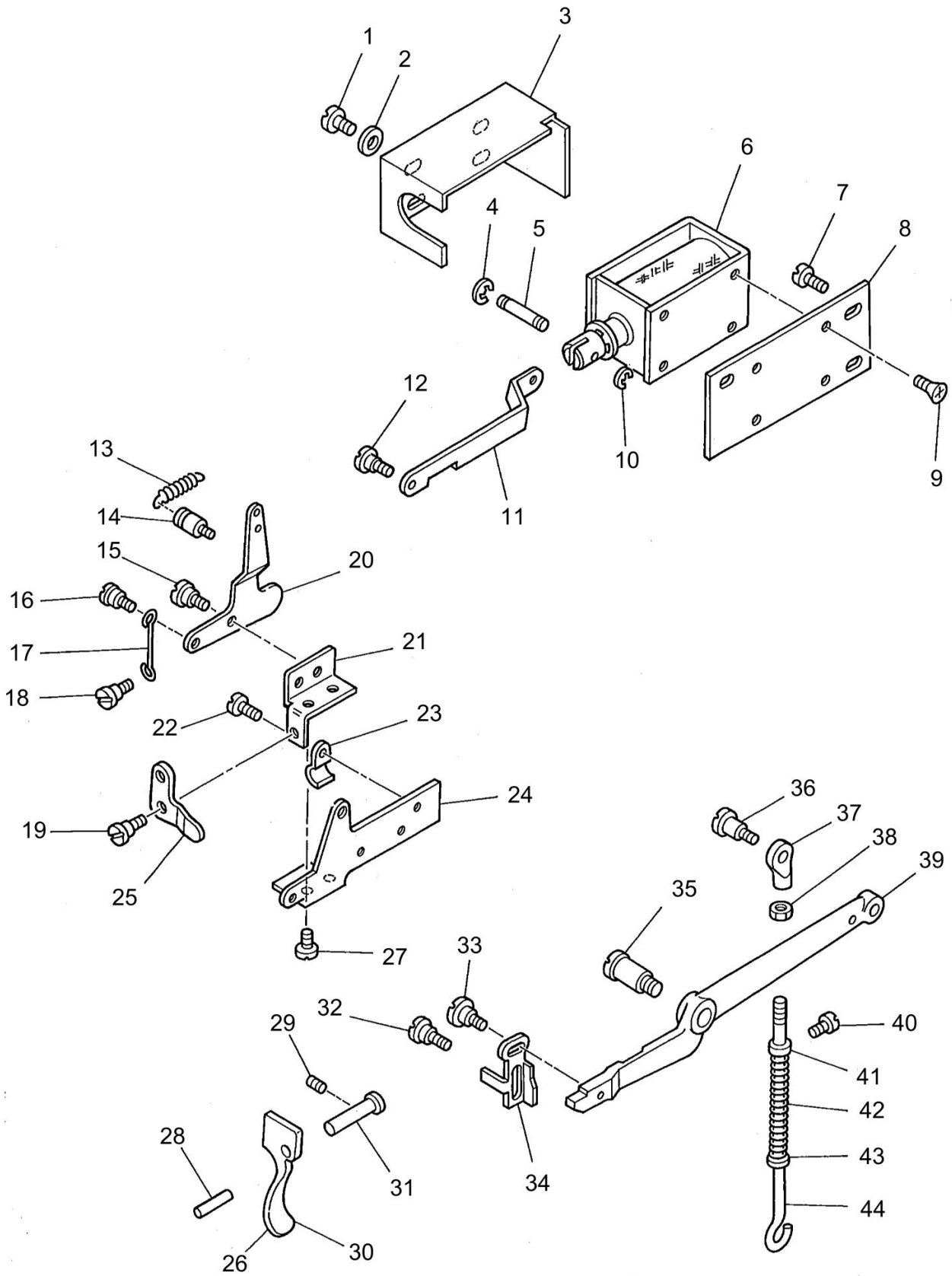
UPPER FEED MECHANISM COMPONENTS



UPPER FEED MECHANISM COMPONENTS

No.	Supply Code	Parts No.	Replacement	Parts name	Remarks	Choice	Step	Level	Cons	Qty	Rep. QTY
47		B3003141H00A		UPPER FEED DRIVING SHAFT						1	
48		SS6151440SP		SCREW15/64-28L=14						1	
49	R	B3007141H00	B3007141HA0	UPPER FEED SPRING ROD						1	1.00
50		B3009141H0A		NUT						1	
51		B3010141H00		WASHER						1	
52		B3008141H00		HINGE SCREW						1	
53		B1424158000		HINGE SCREW						1	
54		RE0700000K0		E-RING 7						1	

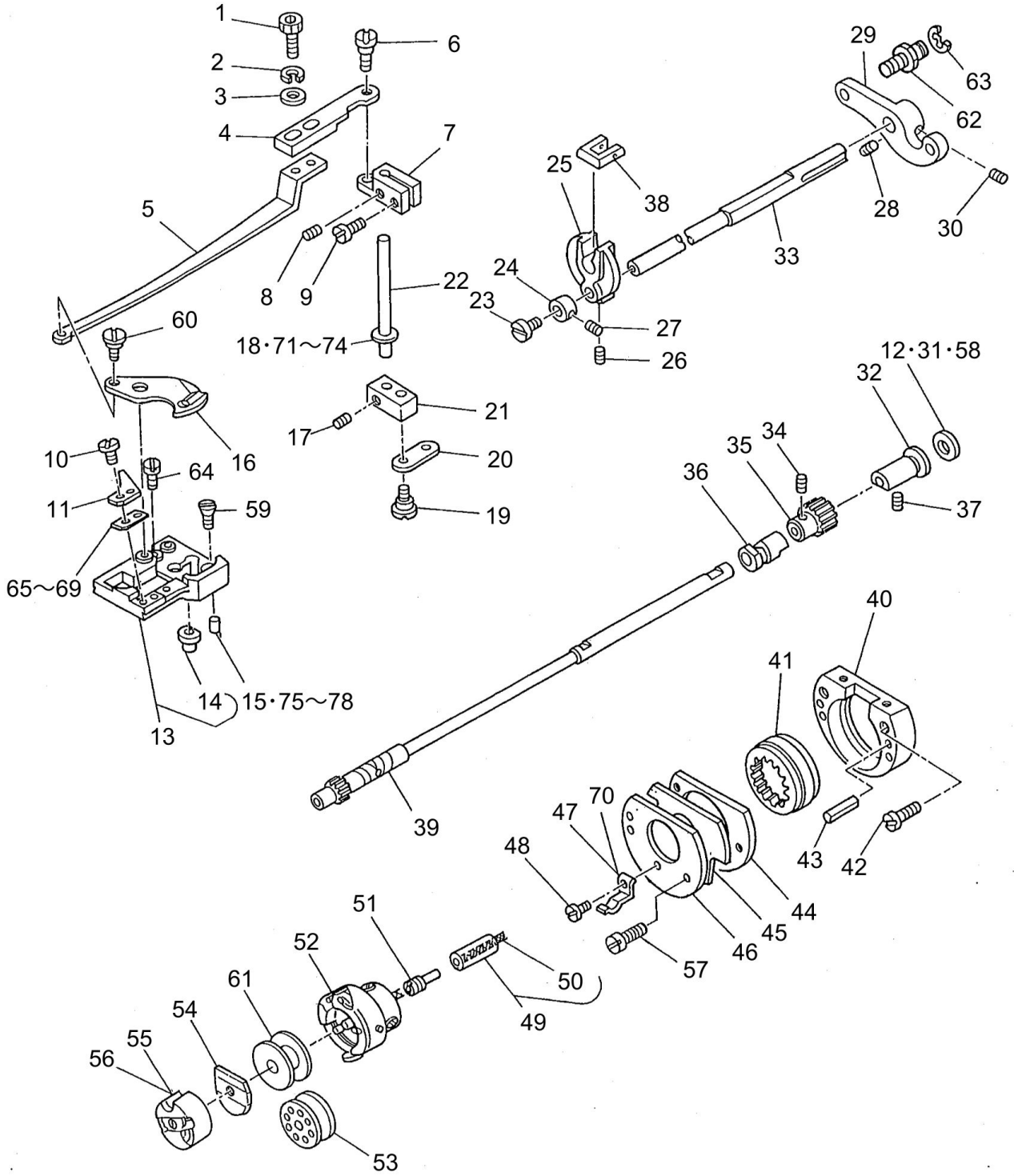
TENSION RELEASE & KNEE LIFTING BAR COMPONENTS



TENSION RELEASE & KNEE LIFTING BAR COMPONENTS

No.	Supply Code	Parts No.	Replacement	Parts name	Remarks	Choice	Step	Level	Cons	Qty	Rep. QTY
1		SM4030601SB		SCREW M3 L=6						4	
2		WP0320501SC		WASHER M3						4	
3		D3157141E0A		SOLENOID COVER						1	
4		RE0250000K0		E-RING 2.5						1	
5		D3156141E00		SOLENOID PIN						1	
6		D3153141E00		TENSION RELEASE SOLENOID						1	
7	R	SS7110910SP	SS7110910TP	SCREW 11/64-40 L=8.5						3	1.00
8		D3154141E00		SOLENOID INSTALLING PLATE						1	
9		SM1030601SA		SCREW M3 L=6						4	
10		RE0250000K0		E-RING 2.5						1	
11	D	D3155141E00		SOLENOID ROD						1	
12		SD0550271TP		HINGE SCREW D=5.50 H=2.7						1	
13		D3149141E00		SPRING						1	
14		10120004		SPRINGSUSPENSION						1	
15		SD0630301SP		HINGE SCREW D=6.35 H=3						1	
16		SD0550271TP		HINGE SCREW D=5.50 H=2.7						1	
17		D3159141E00		CONNECTING BAR						1	
18		SD0550271TP		HINGE SCREW D=5.50 H=2.7						1	
19		SD0640321SP		HINGE SCREW D=6.35 H=3.2						1	
20	D	D3152141E00		TENSION RELEASE LINK B						1	
21		D3151141E00		TENSION RELEASE BRACKET						1	
22		SS7110710SP		SCREW 11/64-40 L=7						3	
23		B3538112000		OIL RETURN TUBE HOLDER						1	
24	D	D3160141E00		TENSION RELEASE PLATE						1	
25	D	D3158141E00		TENSION RELEASE LINK A						1	
26		D1512141E00		HAND LIFTER	FOR DSU-145-4/-7					1	
27		SS7120640SP		SCREW 3/16-28 L=6						2	
28		PS0300132KH		SPRING PIN 3X13						1	
29		SS8110750SP		SCREW 11/64-40 L=6.5						1	
30		B1512141H00		HAND LIFTER	FOR DSU-145					1	
31		B1513141H00		HAND LIFTER SHAFT						1	
32		SD0600271SP		HINGE SCREW D=6 H=2.7						1	
33		SD0600321SP		HINGE SCREW D=6 H=3.2						1	
34		B3134141H00		TENSION RELEASE PLATE						1	
35		SD0991551SP		HINGE SCREW D=9.9 H=5.5						1	
36		SD0790351SP		HINGE SCREW D=7.9 H=3.5						1	
37		B3416141H00A		SWIVEL						1	
38		NS6620310SP		NUT 3/16-32						1	
39		D3410141E0AA		KNEE LIFTER						1	
40		SS7110540SP		SCREW 11/64-40 L=5						1	
41		CS0510713SD		SPRING REST						1	
42		B3414245000		SPRING						1	
43		WP0621016SD		WASHER 6.2X13X1						1	
44		B3415145000		LIFTING LEVER CONNECTING ROD						1	

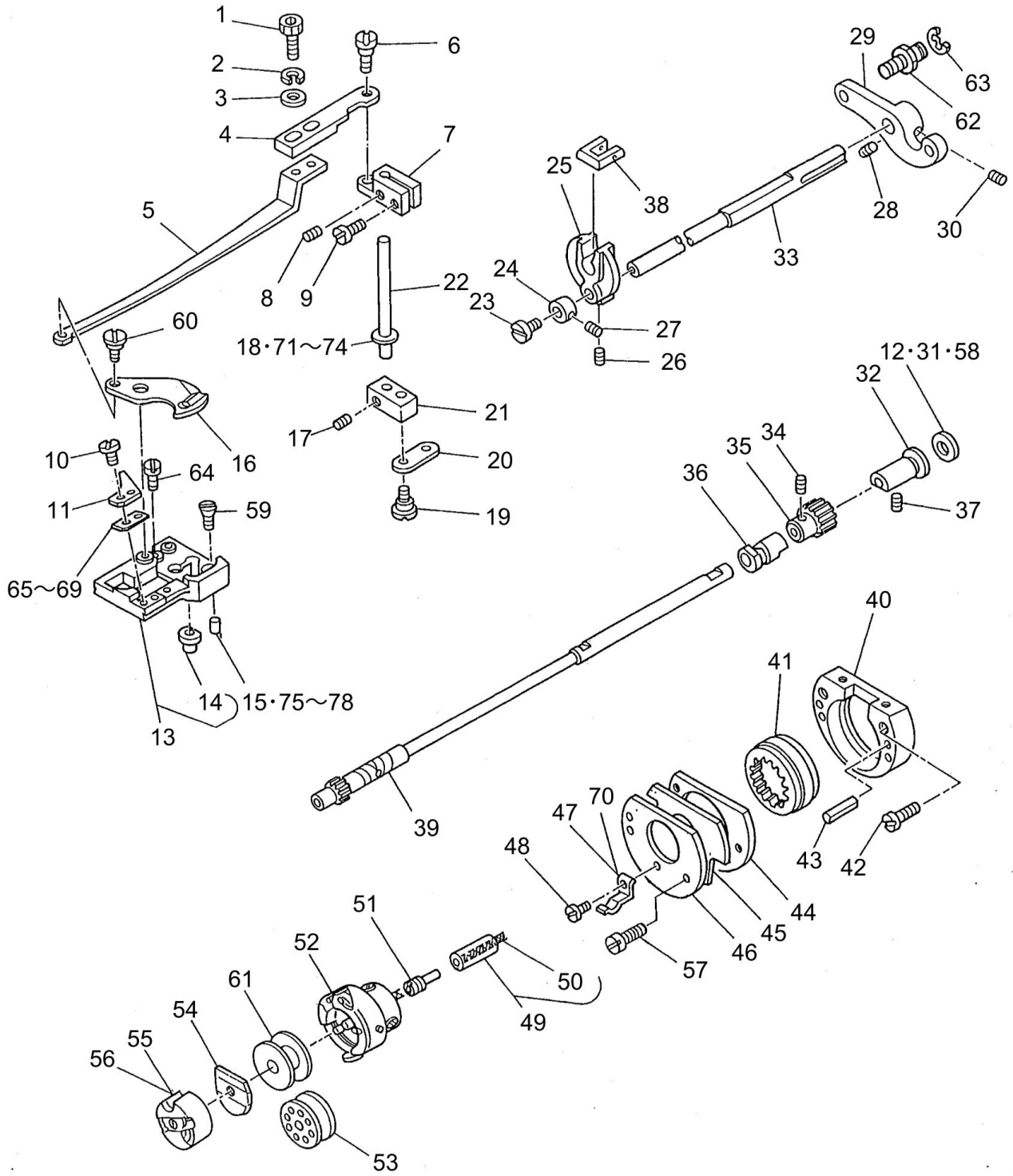
HOOK DRIVING SHAFT COMPONENTS



HOOK DRIVING SHAFT COMPONENTS

No.	Supply Code	Parts No.	Replacement	Parts name	Remarks	Choice	Step	Level	Cons	Qty	Rep. QTY
1		SS7091410SP		SCREW 9/64-40 L=13.5						2	
2		WS0410002KN		SPRING WASHER						2	
3		WP0371026SD		WASHER 3.7X7X1						2	
4		D2420145E00		KNIFE DRIVING PLATE B						1	
5		D2431245E00		KNIFE DRIVING PLATE A						1	
6		SD0640321SP		HINGE SCREW D=6.35 H=3.2						1	
7		D2419245E00		KNIFE DRIVING LINK B						1	
8		SS8090410SP		SCREW 9/64-40 L=3.5						1	
9	R	SS7111410SP	SS7111410TP	SCREW 11/64-40 L=14						1	1.00
10		SS7060310SP		SCREW 3/32-56 L=3						2	
11		D2402245E00		COUNTER KNIFE						1	
12		B183924500A		THRUST PLATE	FOR SELE- CTIVE PART					1	
13		D1630145EA0A		THROAT PLATE BASE ASM.						1	
14		B1631245000		PIN BUSHING				*		1	
15		B163214500C		PIN						1	
16		D2401245E00		MOVING KNIFE						1	
17		SS7110540SP		SCREW 11/64-40 L=5						2	
18		B185351200CA		HOOK SHAFT WASHER C						1	
19		D2441141E00		HINGE SCREW						2	
20		D2436141E00		CONNECTING LINK						1	
21		D2412245E00		KNIFE DRIVING SHAFT ARM A						1	
22	D	D2413245E00		DRIVING SHAFT B						1	
23		SS5110710SP		SCREW 11/64-40 L=7						1	
24		B1646245000		THRUST COLLAR						1	
25		B1603145000		FEED ROCKER						1	
26		SS8701042TP		SCREW 5/16-24 L=10.0						1	
27		SS8110410TP		SCREW 11/64-40 L=3.5						2	
28	R	SS8150710SP	SS8150710TP	SCREW 15/64-28 L=7						1	1.00
29		B1605145000		FEED ROCK SHAFT CRANK						1	
30	R	SS8150830SP	SS8150822TP	SCREW						1	1.00
31		B183924500B		THRUST PLATE						1	
32		B1803145000		BUSHING REAR						1	
33	D	B1601145000		FEED ROCK SHAFT						1	
34		SS8660530TP		SCREW 1/4-40 L=4.5						2	
35		D2405245E00		CAM SHAFT GEAR						1	
36		B1802245000		BUSHING FRONT						1	
37		SS8151550SP		SCREW 15/64-28 L=15						1	
38		B1643145000		FEED BAR SLIDE BLOCK A						5	
39		B1801145000		HOOK DRIVING SHAFT						1	
40		B1635145000		FEED DRIVING CAM HOLDER B						1	
41		B1647145000		FEED DRIVING CAM						1	
42		B1651245000		SCREW						2	
43		B1660145000		SPRING PIN						2	
44		B1634145000		FEED DRIVING CAM HOLDER A						1	
45		B1636145000		FEED DRIVING CAM HOLDER WASHER						1	

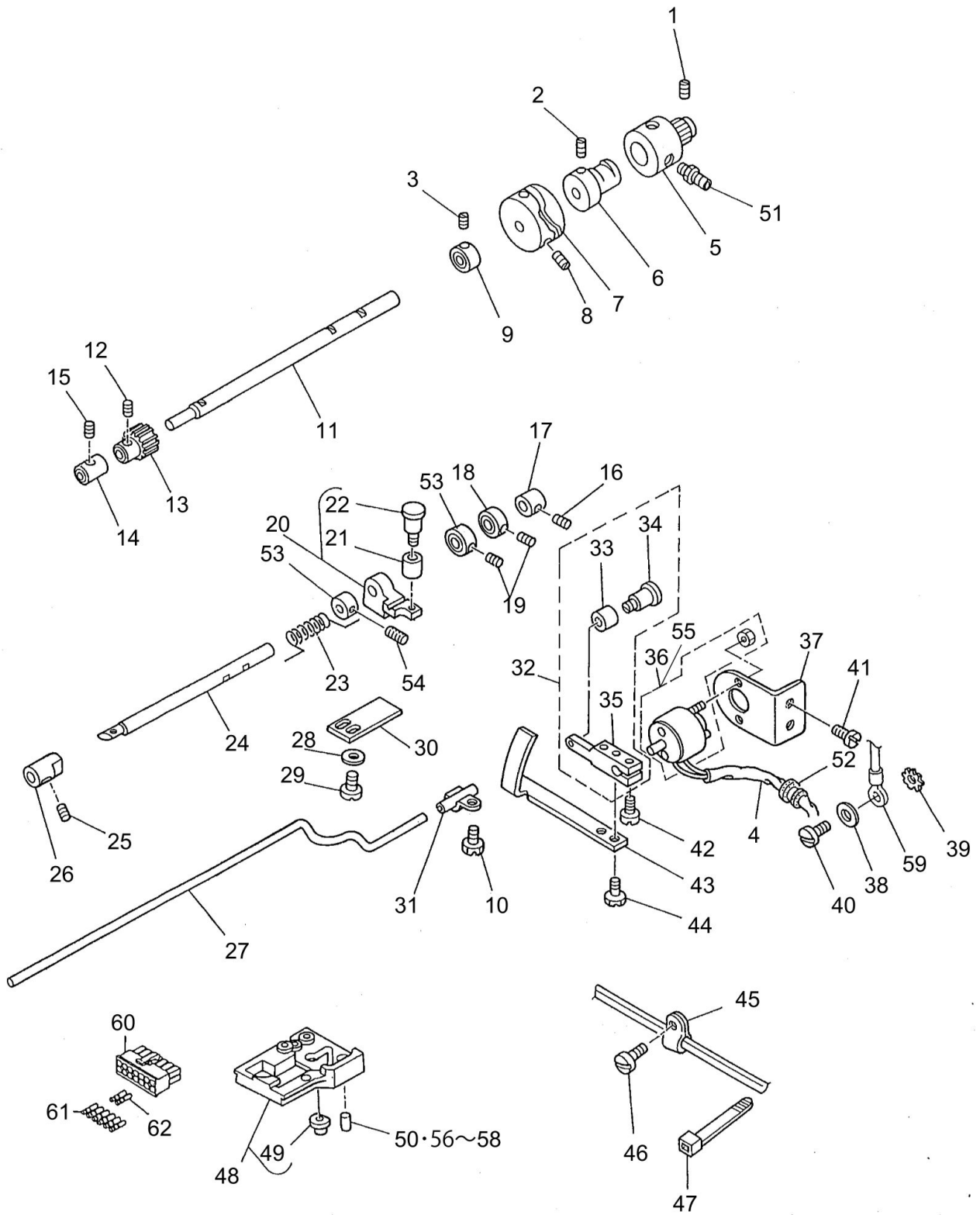
HOOK DRIVING SHAFT COMPONENTS



HOOK DRIVING SHAFT COMPONENTS

No.	Supply Code	Parts No.	Replacement	Parts name	Remarks	Choice	Step	Level	Cons	Qty	Rep. QTY
46		B1637145000		FEED DRIVING CAM HOLDER PLATE						1	
47		B1172245000		HOOK COVER HOLDER	FOR DSU-145					1	
48		SS6060210SP		SCREW 3/32-56 L=1.9						1	
49		B18092450A0		OIL WICK ASM.						1	
50	D	E9862201000		TUBE				*		0.1	
51		22916506		SET SCREW						1	
52		D1830560EA0		HOOK ASM.						1	
53		B9117201000		BOBBIN	FOR DSU-145					1	
54		D1837145E0K		SPRING	EXCEPT DSU-145					1	
55		D1837145EAA		BOBBIN CASE ASM.	EXCEPT DSU-145					1	
56		B1837201SA0		BOBBIN CASE ASM.	FOR DSU-145					1	
57		SS6081210SP		SCREW 1/8-44 L=12						2	
58		B183924500C		THRUST PLATE	FOR SELE-CTIVE PART					1	
59		SS2090810SP		SCREW 9/64-40 L=7.5						2	
60		D2433245E00		HINGE SCREW						1	
61		D9117141E00		BOBBIN	EXCEPT DSU-145					1	
62		B1424158000		HINGE SCREW						1	
63		RE0700000K0		E-RING 7						1	
64		SS6090610SP		SCREW 9/64-40 L=5.5						2	
65		21212600		SUPPORT PLAT	FOR SELE-CTIVE PART					1	
66		21212709		SUPPORT PLAT	FOR SELE-CTIVE PART					1	
67		21212808		SUPPORT PLAT						1	
68		21212907		SUPPORT PLAT	FOR SELE-CTIVE PART					1	
69		21213004		SUPPORT PLAT	FOR SELE-CTIVE PART					1	
70		D1172245E00		HOOK COVER HOLDER	EXCEPT DSU-145					1	
71		B185351200AA		HOOK SHAFT WASHER A	FOR SELE-CTIVE PART					1	
72		B185351200BA		HOOK SHAFT WASHER B	FOR SELE-CTIVE PART					1	
73		B185351200D		HOOK SHAFT WASHER	FOR SELE-CTIVE PART					1	
74		B185351200E		HOOK SHAFT WASHER	FOR SELE-CTIVE PART					1	
75		B163214500E		VERTICAL FEED PIN	FOR SELE-CTIVE PART					1	
76		B163214500D		PIN	FOR SELE-CTIVE PART					1	
77		B163214500B		VERTICAL FEED PIN	FOR SELE-CTIVE PART					1	
78		B163214500A		PIN	FOR SELE-CTIVE PART					1	

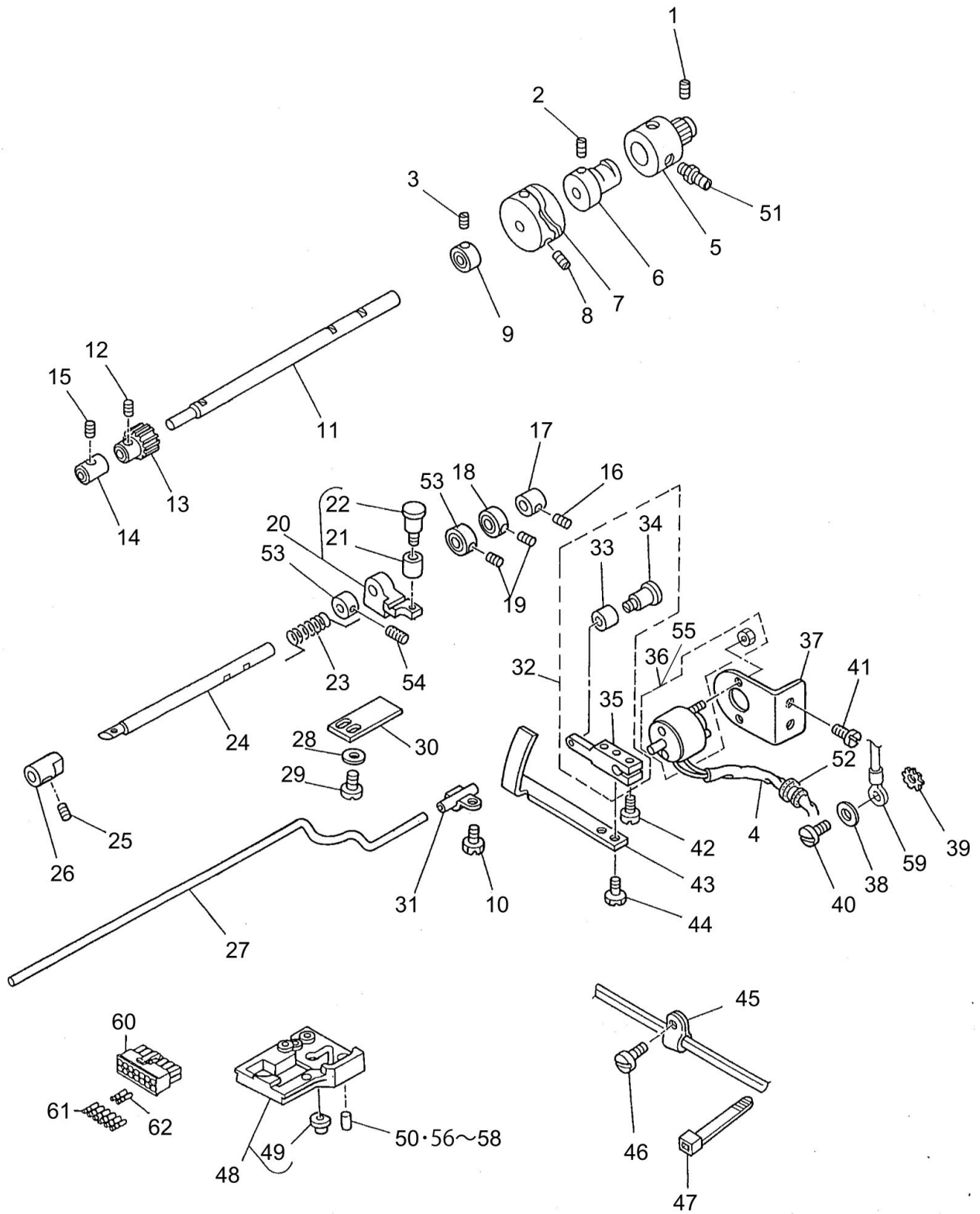
THREAD TRIMMER COMPONENTS



THREAD TRIMMER COMPONENTS

No.	Supply Code	Parts No.	Replacement	Parts name	Remarks	Choice	Step	Level	Cons	Qty	Rep. QTY
1		SS8151230SP		SCREW15/64-28L=12						1	
2		SM8040602TP		SCREW M4X0.7 L=6						2	
3		D2434245E00		SCREW						2	
4		D2428141E00		CORD TUBE 5X0.4						1.2	
5		D2408245E00		BUSHING REAR						1	
6		D3501245E00		OIL PUMP SHAFT						1	
7		D2403245E00		THREAD TRIMMER CAM						1	
8		SS8660612TP		SCREW 1/4-40 L=6						2	
9		D2432245E00		THRUST COLLER						1	
10		SS7110710SP		SCREW 11/64-40 L=7						1	
11		D2404245E00		CAM SHAFT						1	
12		SS8660530TP		SCREW 1/4-40 L=4.5						2	
13		D2405245E00		CAM SHAFT GEAR						1	
14		D2406245E0A		HOOK SHAFT BUSHING FRONT						1	
15		SS8151230SP		SCREW15/64-28L=12						1	
16		SS8151230SP		SCREW15/64-28L=12						1	
17		D2411245E00		BUSHING REAR						1	
18		D2432245E00		THRUST COLLER						1	
19		D2434245E00		SCREW						4	
20		D2417245EA0		CAM ROLLER ARM ASM.						1	
21		B3031141H00		CONNECTING STUD				*		1	
22		D2423245E00		CAM ROLLER ARM				*		1	
23		D2416245E00		SPRING						1	
24		D2409245E00		DRIVING SHAFT A						1	
25		SS8151230SP		SCREW15/64-28L=12						1	
26		D2410245E00		BUSHING FRONT						1	
27		D2427145E00		PICKER DRIVING BAR						1	
28		SS6090810SP		SCREW 9/64-40 L=7.5						2	
29		WP0371026SD		WASHER 3.7X7X1						2	
30		D2421245E00		CAM ROLLER ARM HOLDER						1	
31	D	D2430245EA0		PICKER DRIVING BAR HOLDER ASM.						1	
32		D2415245EA0		SOLENOID ARM ASM.						1	
33		B3031141H00		CONNECTING STUD				*		1	
34		D2423245E00		CAM ROLLER ARM				*		1	
35		D2415245E00		SOLENOID ARM				*		1	
36		D2414245E00		SOLENOID	FOR DSU-- 145-4/-7(SC-1)					1	
37		D2418245E00		SOLENOID BASE						1	
38		WP0501016SD		WASHER 5X10.5X1						1	
39		WT0530002KS		TOOTHED WASHER D=5.3						1	
40		SS7110710SP		SCREW 11/64-40 L=7						1	
41	R	SS7110910SP	SS7110910TP	SCREW 11/64-40 L=8.5						2	1.00
42	R	SS7110910SP	SS7110910TP	SCREW 11/64-40 L=8.5						1	1.00
43		D2428245E00		PICKER DRIVING PLATE						1	
44		SS6090510TP		SCREW 9/64-40 L=5.0						2	
45		D2120555C00		CORD PRESSER (120V)						1	

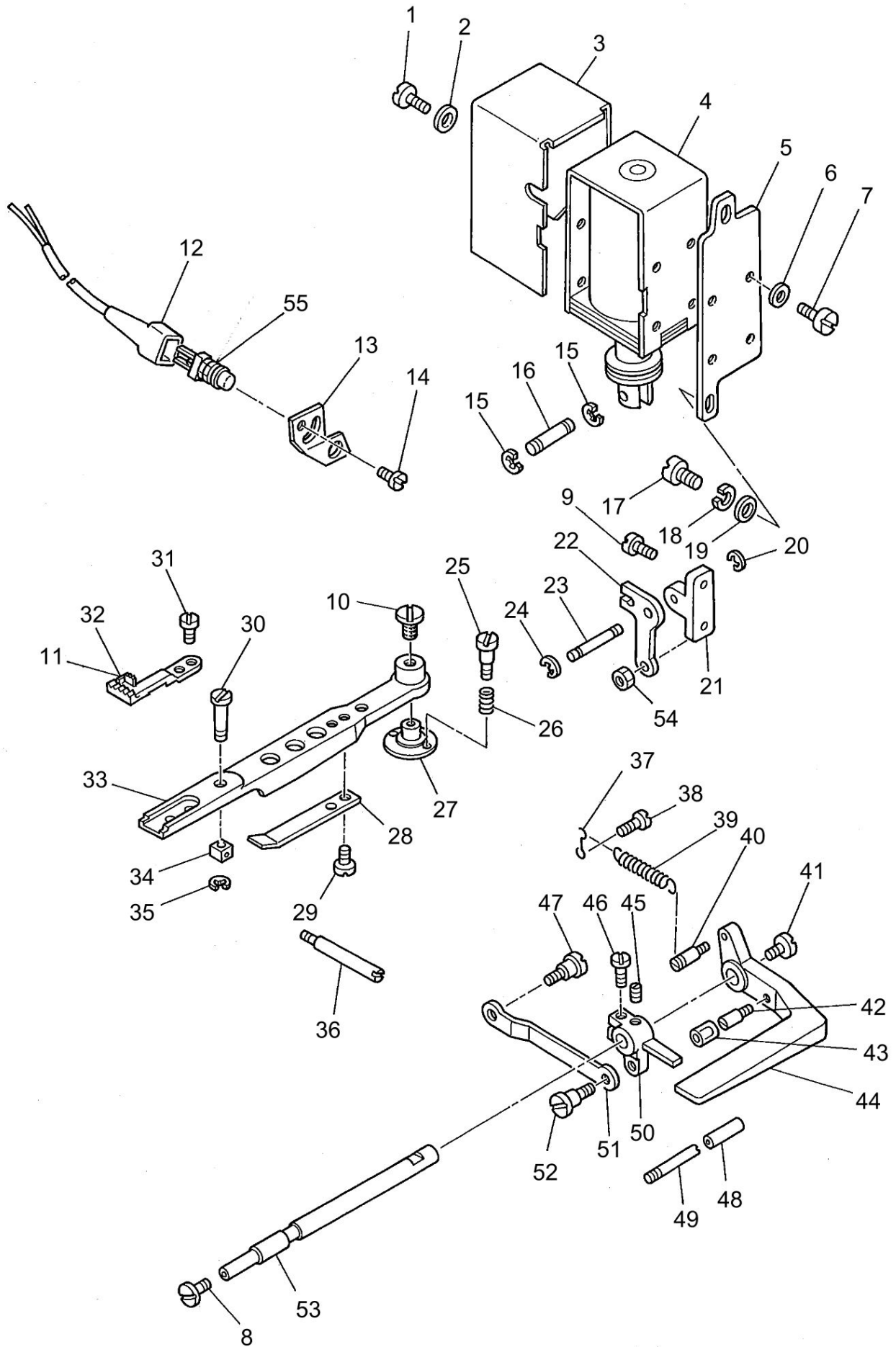
THREAD TRIMMER COMPONENTS



THREAD TRIMMER COMPONENTS

No.	Supply Code	Parts No.	Replacement	Parts name	Remarks	Choice	Step	Level	Cons	Qty	Rep. QTY
46		SS7110710SP		SCREW 11/64-40 L=7						1	
47		GES12153000		OIL WICK HOLDER						3	
48		B16301450A0A		THROAT PLATE BASE ASM.	FOR DSU-145					1	
49		B1631245000		PIN BUSHING	FOR DSU-145			*		1	
50		B163214500G		PIN	FOR DSU-145					1	
51		SQ1110401MZ		CONNECTING SCREW						2	
52		D2414141E00		LORD BUSHING						1	
53		D2432245E0A		THRUST COLLAR A						2	
54		D2434245E00		SCREW						2	
55		D2414245E0A		SOLENOID	FOR DSU-- 145-7(SC-380)					1	
56		B163214500J		PIN	SELECTIVE PART FOR DSU-145					1	
57		B163214500H		PIN	SELECTIVE PART FOR DSU-145					1	
58		B163214500F		PIN	SELECTIVE PART FOR DSU-145					1	
59		D6037245GA0		GROUND WIRE ASM.	FOR DSU-- 145-7(SC-1)					1	
60		HK034610140		HOUSING 14P	FOR DSU-145-7					1	
61		HK03464000B		PIN CONTACT	FOR DSU-145-7-0B					6	
62		HK03464000B		PIN CONTACT	FOR DSU-145-7-00					2	

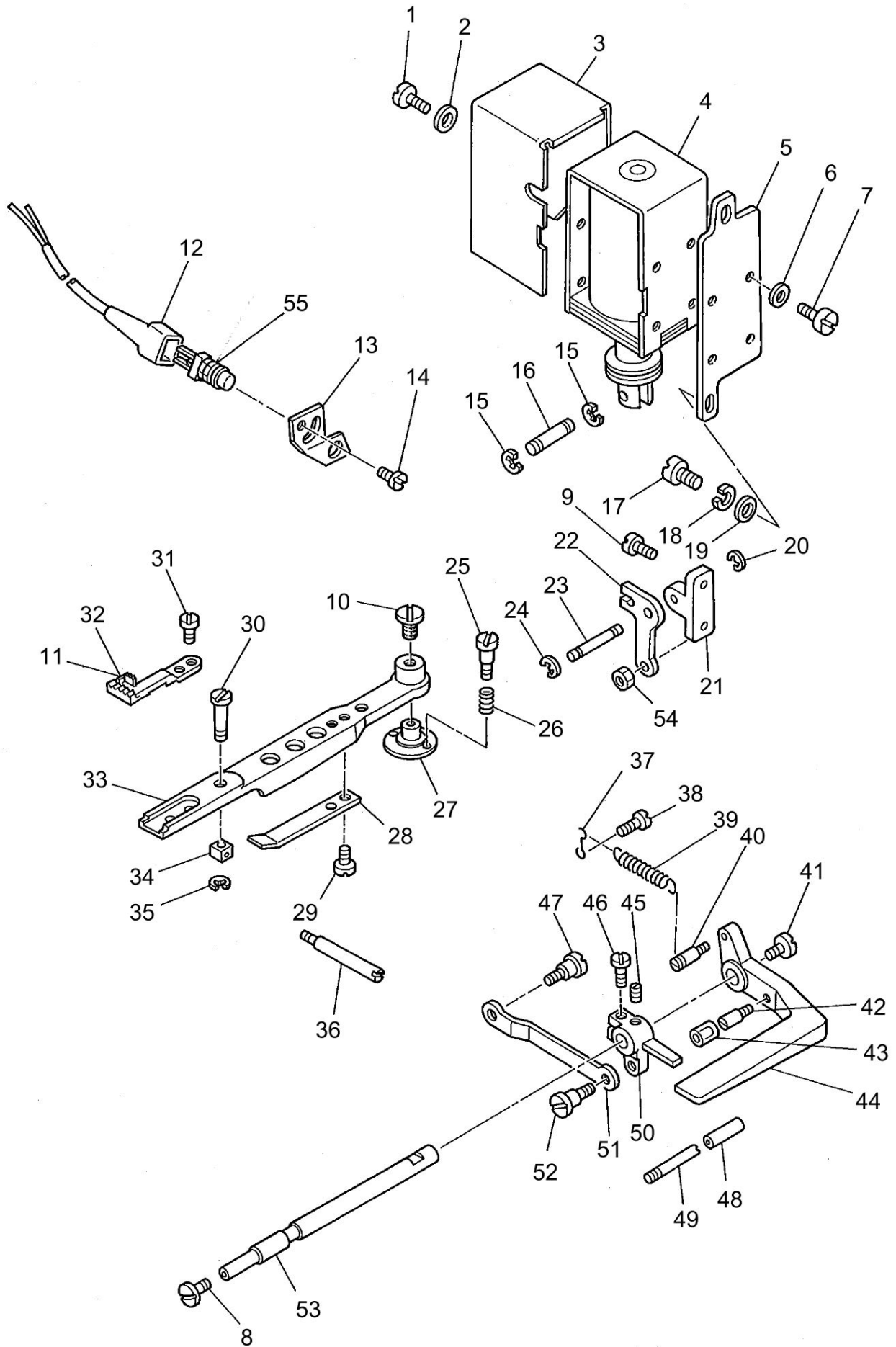
AUTOMATIC REVERSE FEED MECHANISM COMPONENTS



AUTOMATIC REVERSE FEED MECHANISM COMPONENTS

No.	Supply Code	Parts No.	Replacement	Parts name	Remarks	Choice	Step	Level	Cons	Qty	Rep. QTY
1		SS7110710SP		SCREW 11/64-40 L=7	FOR DSU-- 145-4-1B/-7-0B					4	
2		WP0501016SD		WASHER 5X10.5X1	FOR DSU-- 145-4-1B/-7-0B					4	
3		10161305		SOLENOID COVER	FOR DSU-- 145-4-1B/-7-0B					1	
4		10119006		REVERSE FEED SOLENOID AC31V	FOR DSU-- 145-4-1B/-7-0B					1	
5		10119204		SOLENOID INSTALLING PLATE	FOR DSU-- 145-4-1B/-7-0B					1	
6		WP0501016SD		WASHER 5X10.5X1	FOR DSU-- 145-4-1B/-7-0B					4	
7		SS9111010SP		SCREW 11/64-40 L=9.5	FOR DSU-- 145-4-1B/-7-0B					4	
8		SS7620750SP		SCREW 3/16-32 L=6.5						1	
9		SS7151210SP		SCREW 15/64-28 L=12	FOR DSU-- 145-4-1B/-7-0B					2	
10		B1640145000		FEED BAR SLIDE SCREWER STUD						.5	
11		B1613145000		FEED DOG	FOR DSU-145					1	
12		MAT81126T00		2-POLE PLUG COVER	FOR DSU-- 145-4-1B/-7-0B					1	
13		D1681141E0A		PLATE	FOR DSU-- 145-4-1B/-7-0B					1	
14		SS7110710SP		SCREW 11/64-40 L=7	FOR DSU-- 145-4-1B/-7-0B					2	
15		RE0400000K0		E-RING 4	FOR DSU-- 145-4-1B/-7-0B					2	
16		D2464555B00		LINK DRIVING MAGNET PIN	FOR DSU-- 145-4-1B/-7-0B					1	
17		SS7151210SP		SCREW 15/64-28 L=12	FOR DSU-- 145-4-1B/-7-0B					2	
18		WS0631510KP		SPRING WASHER	FOR DSU-- 145-4-1B/-7-0B					2	
19		WP0621016SD		WASHER 6.2X13X1	FOR DSU-- 145-4-1B/-7-0B					2	
20		RE0600000K0		E-RING 6	FOR DSU-- 145-4-1B/-7-0B					1	
21		D1684141E00A		LINK INSTALLING BASE	FOR DSU-- 145-4-1B/-7-0B					1	
22		10119402		LINK	FOR DSU-- 145-4-1B/-7-0B					1	
23		D1687141E00		PIN	FOR DSU-- 145-4-1B/-7-0B					1	
24		RE0600000K0		E-RING 6	FOR DSU-- 145-4-1B/-7-0B					1	
25		B1641245000		HINGE SCREW						2	
26		B1642245000		SPRING						2	
27		B1639145000		FEED BAR STUD						1	
28		B1633245000		SPRING						1	
29		SS7080520SP		SCREW 1/8-44 L=4.9						2	
30		B1645245000		FEED BAR SLIDE SCREW STUD						1	
31		B1652245000		SCREW						2	
32		D1613145E00		FEED DOG						1	
33		B1606145000		FEED BAR						1	
34		B1644245000		FEED BAR SLIDE BLOCK B						1	
35		RE0300000K0		E-RING 3						1	
36		B1638245000		SCREW STUD						1	
37		D1682141E00		SUSPENSION HOOK B	FOR DSU-- 145-4-1B/-7-0B					1	
38		SS7090710SP		SCREW 9/64-40 L=6.8	FOR DSU-- 145-4-1B/-7-0B					1	

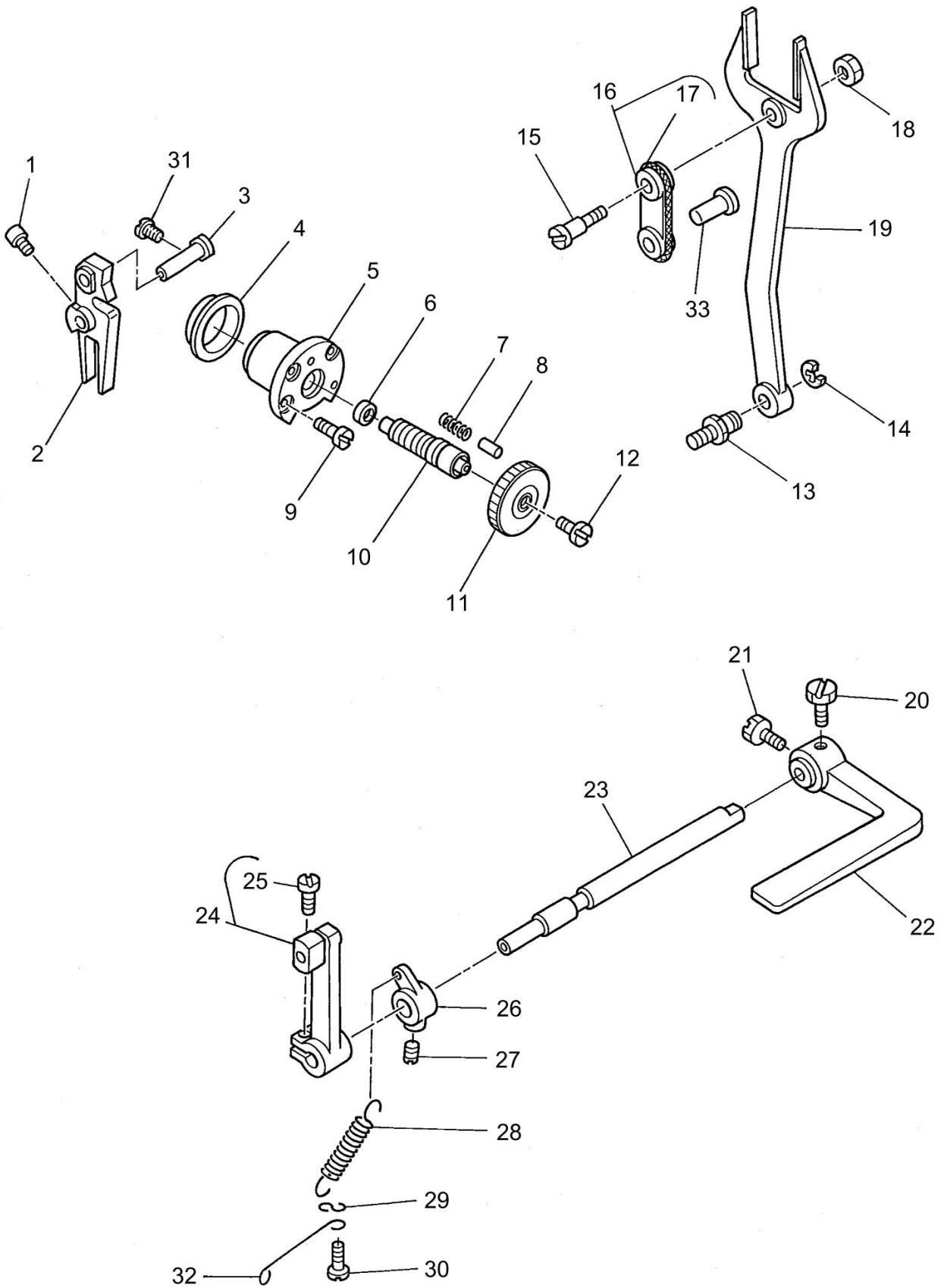
AUTOMATIC REVERSE FEED MECHANISM COMPONENTS



AUTOMATIC REVERSE FEED MECHANISM COMPONENTS

No.	Supply Code	Parts No.	Replacement	Parts name	Remarks	Choice	Step	Level	Cons	Qty	Rep. QTY
39		D1685141E00		LEVER SPRING	FOR DSU-- 145-4-1B/-7-0B					1	
40		10120004		SPRINGSUSPENSION	FOR DSU-- 145-4-1B/-7-0B					1	
41		SS7620750SP		SCREW 3/16-32 L=6.5						1	
42		B1114280000		PIN	FOR DSU-- 145-4-1B/-7-0B					1	
43		10119907		CUSHION	FOR DSU-- 145-4-1B/-7-0B					1	
44		D1624141E0A		REVERSE FEED CONTROL LEVER	FOR DSU-- 145-4-1B/-7-0B					1	
45		SS8150510TP		SCREW 15/64-28 L=4.7	FOR DSU-- 145-4-1B/-7-0B					1	
46		SS7121410TP		SCREW 3/16-28 L=14	FOR DSU-- 145-4-1B/-7-0B					1	
47		SD0720331SP		HINGE SCREW D=7.24 H=3.3	FOR DSU-- 145-4-1B/-7-0B					1	
48		BP300000000		VINYL PIPE	FOR DSU-- 145-4-1B/-7-0B					.1	
49		B2733761000		PIN	FOR DSU-- 145-4-1B/-7-0B					1	
50		D1683141E00		CONNECTING ARM	FOR DSU-- 145-4-1B/-7-0B					1	
51		D1686141E00		REVERSE FEED ROD	FOR DSU-- 145-4-1B/-7-0B					1	
52		SD0720331SP		HINGE SCREW D=7.24 H=3.3	FOR DSU-- 145-4-1B/-7-0B					1	
53		D1621141E00		LEVER SHAFT	FOR DSU-- 145-4-1B/-7-0B					1	
54		NS6150430SP		NUT 15/64-28	FOR DSU-- 145-4-1B/-7-0B					1	
55		D1680141EA0		TOUCH BUCK SWITCH ASM.	FOR DSU-- 145-4-1B/-7-0B					1	

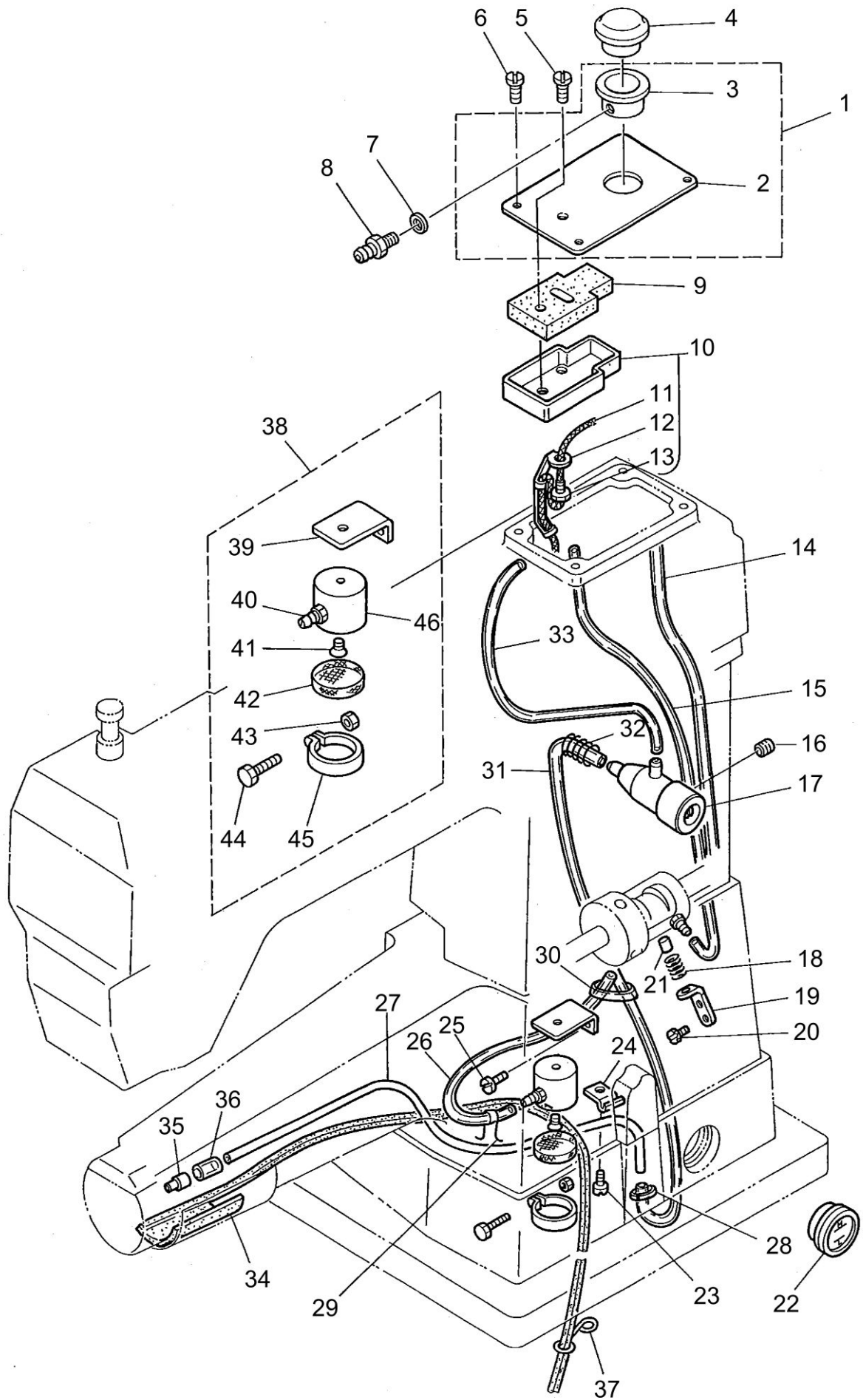
REVERSE FEED MACHANISM LEVER COMPONENTS



REVERSE FEED MACHANISM LEVER COMPONENTS

No.	Supply Code	Parts No.	Replacement	Parts name	Remarks	Choice	Step	Level	Cons	Qty	Rep. QTY
1		SS6661110SP		SCREW 1/4-40 L=11						1	
2		B1620145000		FEED REGULATOR						1	
3		B1622141H00		HINGE PIN						1	
4		B1637141H00		ECCENTRIC BUSHING						1	
5		B1636141H0A		FEED CONTROL SCREW METAL						1	
6		RO074240100		RUBBER RING						1	
7		B1148141H00		SPRING						1	
8		B1147141H00		PIN						1	
9		B1638141H00		SCREW						4	
10		B1634141H00A		STITCH LENGTH REGULATING SCREW						1	
11		B16231450A0		STITCH DIAL						1	
12		SS6121050SP		SCREW 3/16-28 L=9.5						1	
13		B1424158000		HINGE SCREW						1	
14		RE0700000K0		E-RING 7						1	
15		SD0950802SH		HINGE SCREW D=9.53 H=8						1	
16	D	B16191150A0		REGULATOR CONNECTING LINK ASM.						1	
17		CQ200000000		OIL WICK				*		0.1	
18		NS6680410SP		NUT 9/32-28						1	
19	D	B1614145000		PITMAN						1	
20		SS9660910SP		SCREW 1/4-40 L=9.4	FOR DSU-- 145/-4-1/-7-00					1	
21		SS9660720SP		SCREW 1/4-40 L=7	FOR DSU-- 145/-4-1/-7-00					1	
22		B1624141H0A		FEED LEVER	FOR DSU-- 145/-4-1/-7-00					1	
23		B1621141H00A		CONTROL LEVER SHAFT	FOR DSU-- 145/-4-1/-7-00					1	
24	D	B16272260B0		CONTROL LEVER CRANK ASM.						1	
25		SS6121210SP		SCREW 3/16-28 L=12				*		1	
26		B1647226000		SUSPENSION BRACKET (A)						1	
27	R	SS8150710SP	SS8150710TP	SCREW 15/64-28 L=7						1	1.00
28		B1646201000		TENSION SPRING						1	
29		B1648122000		SUSPENSION HOOK (B)						1	
30	R	SS7091110SP	SS7091110TP	SCREW 9/64-40 L=10.5						1	1.00
31		SS6151220SP		SCREW 15/64-28 L=11.5						1	
32	D	B3537201000		OIL FELT HOLDER						1	
33		B1618226000		HINGE PIN						1	

LUBRICATION COMPONENTS



LUBRICATION COMPONENTS

No.	Supply Code	Parts No.	Replacement	Parts name	Remarks	Choice	Step	Level	Cons	Qty	Rep. QTY
1		B11501450AA		TOP COVER ASM.						1	
2		B1150145000		TOP COVER				*		1	
3		B3505145000		OIL SIGH WINDOW BASE				*		1	
4		B3520586000		OIL SIGHT WINDOW						1	
5		SS7112420SP		SCREW11/64-40L=24						1	
6		SS7110710SP		SCREW 11/64-40 L=7						2	
7		B3534012000		GASKET						1	
8		SQ1110401MZ		CONNECTINGSCREW						3	
9		B3504201000		OIL FELT						1	
10	D	B35031450A0		OIL RESERVOIR ASM.						1	
11		CQ202000000		OIL WICK				*		0.3	
12	D	B3527012000		HOLDER				*		1	
13		B3515201000		CLAMP SLEEVE NUT				*		1	
14		BT0500300EA		OIL TUBE						.3	
15		BT0500300EA		OIL TUBE						.4	
16	R	SS8150710SP	SS8150710TP	SCREW 15/64-28 L=7						1	1.00
17	D	D3513245EA0		OIL ADJUSTING ASM.						1	
18		B1214038000		PLUNGER SPRING						1	
19		D3502245E00		PLUNGER HOLDER						1	
20		SS9111010SP		SCREW 11/64-40 L=9.5						2	
21		B3534155000		PLUNGER						1	
22		B3506245000		OIL WINDOW						1	
23		SS7110710SP		SCREW 11/64-40 L=7						1	
24		D3916481C00		TUBE HOLDER						1	
25	R	SS7111310SP	SS7111310TP	SCREW 11/64-40 L=12.8						1	1.00
26		BT0500300EA		OIL TUBE						.2	
27	D	B3523245000		OIL TUBE						1	
28		GES12153000		OIL WICK HOLDER						1	
29		10126803		OIL TUBE HOLDER						1	
30		GES12153000		OIL WICK HOLDER						1	
31		BT0500300EA		OIL TUBE						.2	
32		B3520245000		SPRING						1	
33		BT0500300EA		OIL TUBE						.3	
34	D	B35272450A0		CYLINDER COVER FELT ASM.						1	
35		B3525245000		JOINT						1	
36		BT0400251EC		TUBE HOSE YELLOW						.1	
37	D	B3537201000		OIL FELT HOLDER						1	
38		B35112460A0		SUCTION ASM.						1	
39		B3512246000		SUCTION SET PLATE				*		1	
40		SQ1150451MZ		CONNECTINGSCREW				*		1	
41		SS2110930SP		SCREW 11/64-40 L=8.7				*		1	
42		B1851512000		FILTER SCREEN				*		1	
43		NS6090310SP		NUT 9/64-40				*		1	
44	R	SS7090910SP	SS7090910TP	SCREW 9/64-40 L=8.5				*		1	1.00
45	R	B1850512000	40009379	BUSHING HOLDER				*		1	1.00
46	D	10126324		SUCTION				*		1	

TABLE & KNEE LIFFTER COMPONENTS

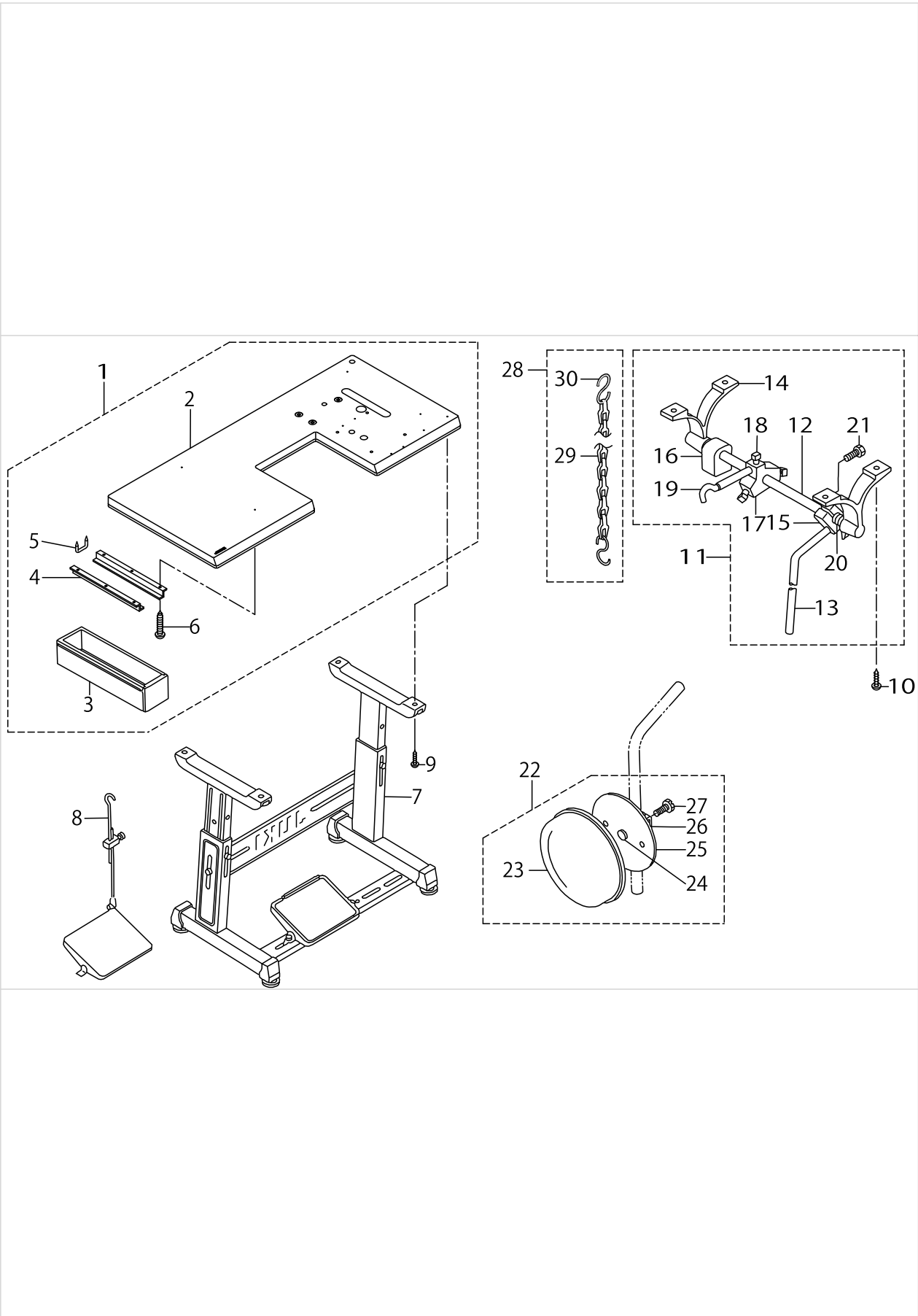
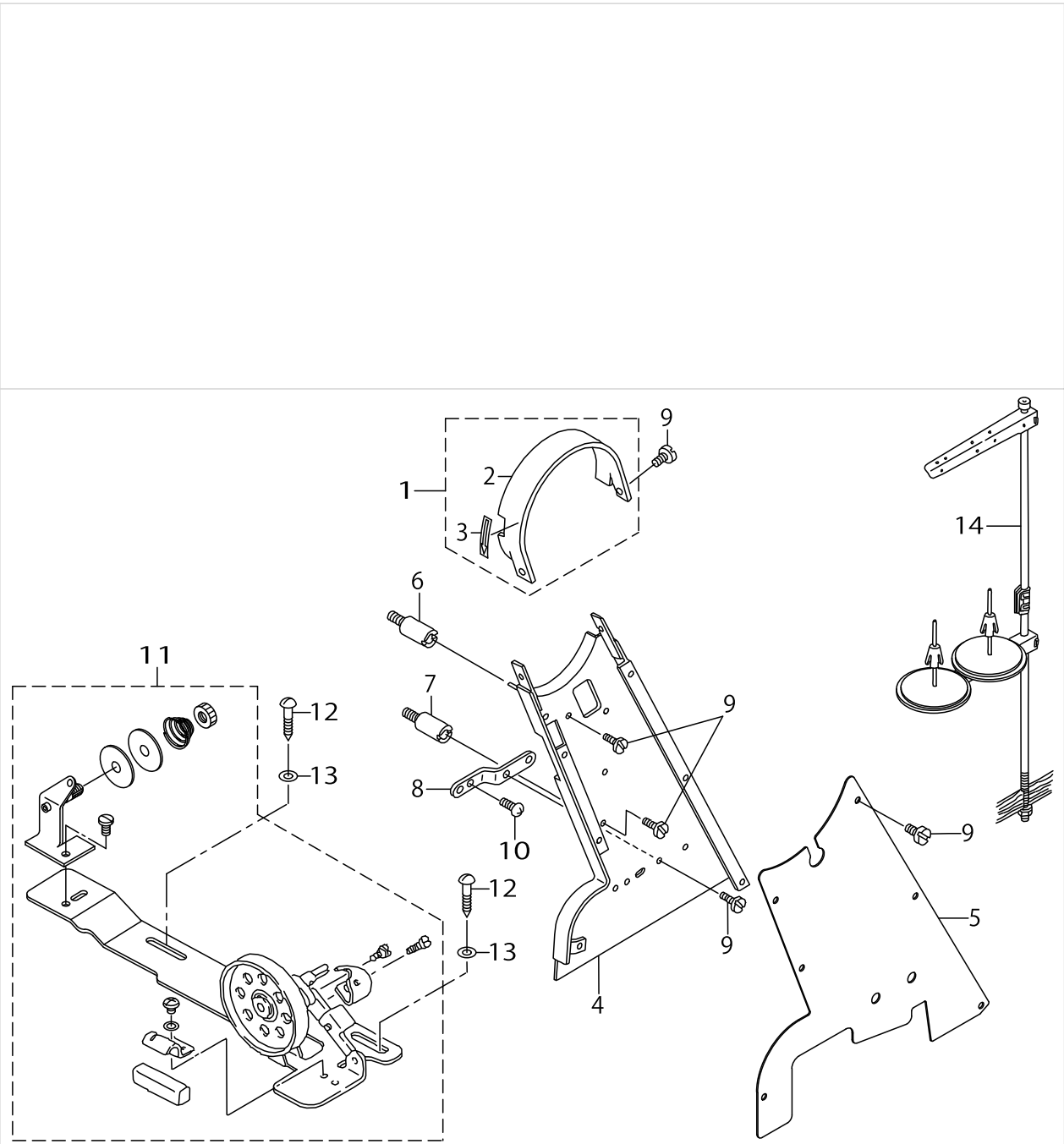


TABLE & KNEE LIFFTER COMPONENTS

No.	Supply Code	Parts No.	Replacement	Parts name	Remarks	Choice	Step	Level	Cons	Qty	Rep. QTY
1		D8201145GA0		TABLE ASM.						1	
2		D8201145G00		TABLE				*		1	
3	R	11155108	11155157	DRAWER				*		1	1.00
4		11155207		DRAWER SUPPORT				*		2	
5		D8204555D00		DRAWER STOPPER				*		1	
6		SK3311600SE		WOOD SCREW D=3.1 L=16				*		6	
7		11157567		T LEG JUNCTION						1	
8		B71140120A0		MOTOR CONNECTING ROD ASM.	FOR DSU-145					1	
9	R	SK3513200SC	SK3513201SE	WOOD SCREW D=5.1 L=32						4	1.00
10		SK1483201SE		WOOD SCREW D=4.8 L=32						4	
11		B34202450A0		KNEE LIFTER ASM.						1	
12		B3420245000		MAIN SHAFT				*		1	
13		B3422245000		KNEE LIFTER PLATE ROD				*		1	
14		B3423245000		KNEE PRESS ROD HOLDER				*		2	
15	R	B3433141H0A	22932453	BRACKET				*		1	1.00
16		B3434141H00		BRACKET				*		1	
17		B3424141H00		MOUNTING BRACKET				*		1	
18	R	B3425141H00	SS9201813CP	MOUNTING BRACKET SET SCREW				*		3	1.00
19		B3424245000		KNEE LIFTER PLATE ARM				*		1	
20		B3425245000A		SPRING				*		1	
21		SS9182010SN		SCREW 9/32-20 L=20				*		2	
22	R	B34262450A0	23037856	KNEE PRESS PLATE ASM.						1	1.00
23		22934509		KNEE PAD PLATE COVER				*		1	
24		22934400		KNEE PAD PLATE RUBBER				*		1	
25		22934202		KNEE PAD PLATE				*		1	
26		22934301		KNEE PAD PLATE SUPPORT				*		1	
27		SM9061203SE		SCREW M6 L=12				*		1	
28		B34212450A0		CHAIN ASM.						1	
29		B3421245000		CHAIN				*		1	
30		13160304		S SHAPED HOOK				*		2	

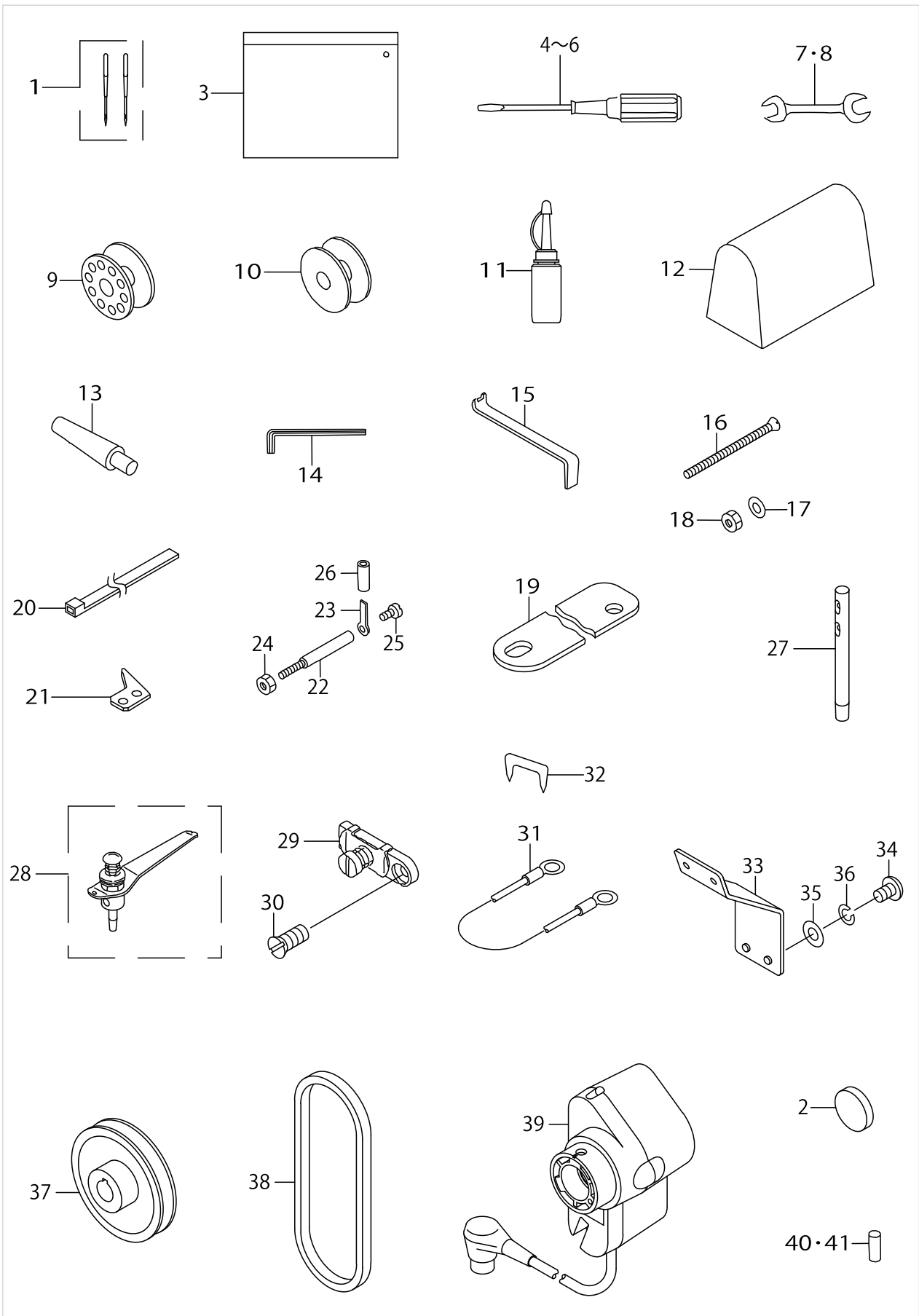
THREAD WINDER & BELT COVER & THREAD STAND COMPONENTS



THREAD WINDER & BELT COVER & THREAD STAND COMPONENTS

No.	Supply Code	Parts No.	Replacement	Parts name	Remarks	Choice	Step	Level	Cons	Qty	Rep. QTY
1		B91011450AA		TOP COVER (WITH LABEL)						1	
2		B910114500A		TOP COVER				*		1	
3		CM500300001		DIRECTION LABEL				*		1	
4		B91021450AA		BELT COVER COMPL.						1	
5		21286901		BELT COVER						1	
6		B9106145000		BELT COVER SUPPORT STUD A						1	
7		B9107145000		BELT COVER SUPPORT STUD B						1	
8		B9108145000		BELT COVER SUPPORT PLATE						1	
9		SS6110480SP		SCREW 11/64-40 L=4.3						12	
10		SS7151210SP		SCREW 15/64-28 L=12						2	
11		11415866		BOBBIN WINDER COMPL.						1	
12	R	SK3482500SC	SK3482501SE	WOOD SCREW D=4.8 L=25						2	1.00
13		WP0501016SC		WASHER 5X10.5X1						2	
14	R	22930358	40096354	THREAD STAND ASM.						1	1.00

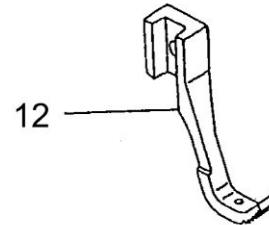
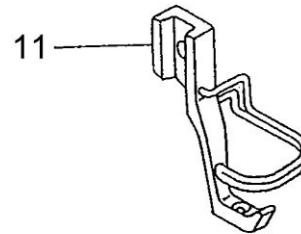
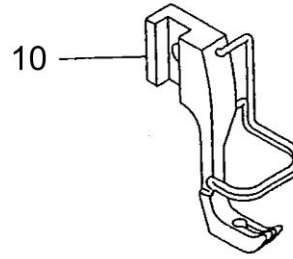
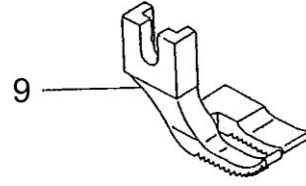
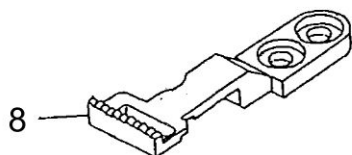
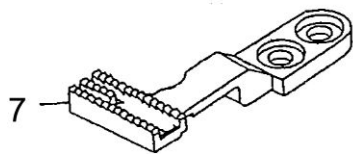
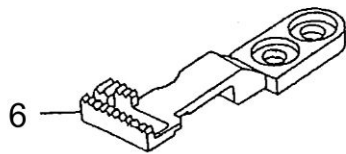
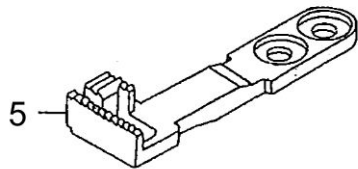
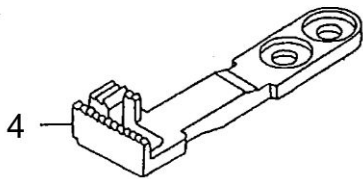
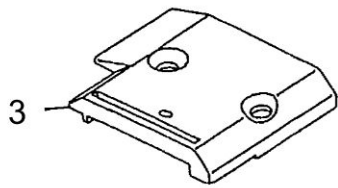
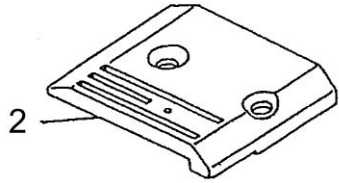
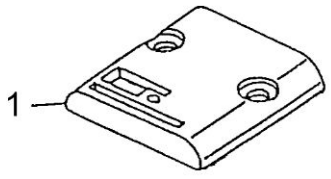
ACCESSORIES PARTS COMPONENTS



ACCESSORIES PARTS COMPONENTS

No.	Supply Code	Parts No.	Replacement	Parts name	Remarks	Choice	Step	Level	Cons	Qty	Rep. QTY
1		MDP170B2102		NEEDLE DPX17#21-2						1	
2		B8228125000		OIL RESERVOIR MAGNET						1	
3	R	B9101552000	22932800	ACCESSORY BOX						1	1.00
4		22933006		SCREW DRIVERN LARGE						1	
5	R	B9110012000	22933105	SCREW DRIVER MIDDLE						1	1.00
6	R	B9111012000	22933204	SCREW DRIVER SMALL						1	1.00
7	R	B9112012000	26034702	WRENCH (11X14)						1	1.00
8		B9113012000		WRENCH (9X10)						1	
9		B9117201000		BOBBIN						1	
10		D9117141E00		BOBBIN	FOR DSU-145					1	
11		B91210120A0		OILER ASM.						1	
12		22933303		VINYL COVER						1	
13		B820424500A		FRAME SUPPORT BAR						1	
14		J106600000F		HEXAGONAL WRENCH KEY						1	
15		B9111245000		WRENCH						1	
16		B9130245000		BOLT						4	
17		WP0751576SD		WASHER 7.5X19X1.5						4	
18		NM6060001SD		NUT M6						4	
19		B9110245000		RUBBER PACKING						2	
20		GES12153000		OIL WICK HOLDER						1	
21		D2402245E00		COUNTER KNIFE	FOR DSU-145-4/-7					1	
22		D7101245E00		SYNCHRONIZER HOLDER STUD	FOR DSU-145-4/-7					1	
23		D7102245E00		SYNCHRONZER HOLDER PLATE	FOR DSU-145-4/-7					1	
24		NS6150430SP		NUT 15/64-28	FOR DSU-145-4/-7					1	
25		SS7110710SP		SCREW 11/64-40 L=7	FOR DSU-145-4/-7					1	
26		BT0630520Z0		HOLDER COVER	FOR DSU-145-4/-7					1	
27		D1113126WA0		NEEDLE THREAD GUIDE PIN ASM.	FOR DSU-145/-4					1	
28		10549657		THRAED GUIDE ASM.	FOR DSU-145-7					1	
29		D1129141EA0		ARM THREAD GUIDE BOTTOM ASM.						1	
30		SS2090710TP		SCREW 9/64-40 L=7.2						1	
31		10741759		GROUND WIRE ASM.	FOR DSU-- 145-4/-7(JUS)					1	
32		MAO11532000		CORD STAPLE	FOR DSU-145-4					2	
33	D	D1114245F00		PANEL THREAD GUIDE	FOR DSU-145-7					1	
34		SM4040601SC		SCREW M4X0.7 L=6	FOR DSU-145-7					1	
35		WP0430800SC		WASHER M4	FOR DSU-145-7					1	
36		WS0410002KN		SPRING WASHER	FOR DSU-145-7					1	
37		MTSP00750B0		MOTOR PULLEY ASM. P.C.D 75	FOR DSU-145-7					1	
38		MTJVM00520A		V BELT	FOR DSU-145-7					1	
39		40026920		SYNCHRONIZER ASM	FOR DSU-145-7					1	
40		B163214500E		VERTICAL FEED PIN	FOR DSU-145-4/-7					1	
41		B163214500J		PIN	FOR DSU-145					1	

GAUGE COMPONENTS



GAUGE COMPONENTS

No.	Supply Code	Parts No.	Replacement	Parts name	Remarks	Choice	Step	Level	Cons	Qty	Rep. QTY
1		B110514500B		THROAT PLATE	FOR DSU-145					1	
2		D1105145E0B		THROAT PLATE	FOR DSU-- 145-4/-7 (- WITH USE OF D1613-145-E0B)					1	
3		D1105145E0T		THROAT PLATE	FOR DSU-145-4/-7					1	
4		B161314500A		FEED DOG	FOR DSU-145					1	
5		B161314500B		FEED DOG	FOR DSU-145					1	
6		D1613145E0A		FEED DOG	FOR DSU-145-4/-7					1	
7		D1613145E0B		FEED DOG	FOR DSU-- 145-4/-7 (- WITH USE OF D1105-145-E0B)					1	
8		D1613145E0T		FEED DOG	FOR DSU-145-4/-7					1	
9	D	B152614500A		PRESSURE FOOT	WITH USE OF B1525-145-00A					1	
10		D1525141EAA		PRESSER FOOT ASM.						1	
11		B15251450AT		PRESSER FOOT ASM.						1	
12		B152514500A		PRESSURE FOOT	WITH USE OF B1526-145-00A					1	

HOW TO MAKE USE OF THIS PARTS LIST

1.As to "#01" and "#02" refer to the "Note" given at the bottom of the respective pages.

2.Codes on the "Qty" column

- Each numeral indicates the number of parts required.
- "0.1" and "2.5" indicate the length (in meters) of the respective parts.

3.Parentheses mean that the corresponding part is a subpart that constructs an assembly part.

4.Dotted lines on the Figures indicate assembly parts.

1. リストページの# 0 1、# 0 2の印は、ページ下の"注記"の説明を参照下さい。
2. 数量欄の数字は、個数を表し、0. 1、2. 5等の数値は、長さ（単位メートル）を表します。
3. 数量欄の（ ）は、組部品を構成している子部品であることを意味します。
4. イラストページの-----枠は、組構成であることを意味します。

Illustration of this parts list is based on the model DSU-145-4-1B.

このパーツリストは、DSU-145-4-1Bを基本にイラストを作成してあります。

NUMERICAL INDEX OF PARTS

PART NO	PAGE	REF NO.	PART NO	PAGE	REF NO.	PART NO	PAGE	REF NO.
10106102	12	26	26028001	2	25	B1308012000	8	33
10119006	26	4	40026920	38	39	B13081550A0	8	43
10119204	26	5	B1105145000	2	1	B1310012000	8	31
10119402	26	22	B110514500B	40	1	B1311012000	8	32
10119907	28	43	B1114280000	28	42	B1312012000	8	34
10120004	16	14	B1116246000	4	70	B1401145000	6	18
10120004	28	40	B1117246000	4	68	B1402141H0A	6	23
10126324	32	46	B1118141H0AA	2	2	B1408141H00	6	33
10126803	32	29	B1121141HAAD	2	33	B14115520A0	6	35
10161305	26	3	B1123141H0A	2	27·83	B1414555000	6	38
10549657	38	28	B1128246000	4	64	B1421141H00	8	28
10741759	38	31	B1128522000	2	37	B1424158000	14	53
11072204	2	15	B1129141H00	2	42	B1424158000	20	62
11155108	34	3	B1131141H00	4	49	B1424158000	30	13
11155207	34	4	B1147141H00	30	8	B1501141H00	8	18
11157567	34	7	B1148141H00	30	7	B1509141H00	8	5
11415205	4	27·83	B1150145000	32	2	B1510141H00	8	7
11415866	36	11	B11501450AA	32	1	B1510155000	8	19
13160304	34	30	B1156115000	2	26	B1512141H00	16	30
21103304	8	20	B1171145000	4	57	B1513141H00	16	31
21205109	6	2	B1172245000	20	47	B1515141H00	8	15
21212600	20	65~69	B1173145000	4	60	B152514500A	40	12
21212709	20	65~69	B11781450A0	4	54	B15251450AT	40	11
21212808	20	65~69	B1179145000	4	55	B1526145000	12	23
21212907	20	65~69	B1180245000	4	76	B152614500A	40	9
21213004	20	65~69	B1181245000	4	74	B1601145000	18	33
21272802	12	17	B1182245000	4	75	B1603145000	18	25
21286802	8	26	B118324500A	4	65	B1605145000	18	29
21286901	36	5	B118324500B	4	66	B1606145000	26	33
21295308	6	40	B1203051000	6	43	B1613145000	26	11
22860704	6	41	B1203141H00	6	13	B161314500A	40	4
22901409	6	4	B1210141H00	6	32	B161314500B	40	5
22901805	4	58	B1211141H00	6	6	B1614145000	30	19
22904155	6	11	B1211226000	6	10	B1618226000	30	33
22904155	12	28	B1212012000	6	9	B16191150A0	30	16
22906101	6	5	B1213012000	6	8	B1620145000	30	2
22907604	8	6	B1214038000	32	18	B1621141H00A	30	23
22916506	20	51	B1301145000	8	14	B1622141H00	30	3
22930358	36	14	B1302201000	8	21	B16231450A0	30	11
22933006	38	4~6	B1303271000	8	46	B1624141H0A	30	22
22933303	38	12	B13050120A0	8	38	B16272260B0	30	24
22934202	34	25	B13061550B0	8	35	B16301450A0A	24	48
22934301	34	26	B13061550C0	8	36	B1631245000	18	14
22934400	34	24	B13071550A0	8	41	B1631245000	24	49
22934509	34	23	B13071550D0	8	40			

NUMERICAL INDEX OF PARTS

PART NO	PAGE	REF NO.	PART NO	PAGE	REF NO.	PART NO	PAGE	REF NO.
B163214500A	20	15·75~ 78	B18092450A0	20	49	B3025141H00A	12	31
B163214500B	20	15·75~ 78	B1837201SA0	20	56	B3026141H00	12	38
B163214500C	18	15·75~ 78	B183924500A	18	12·31·58	B3028141H00	12	42
B163214500D	20	15·75~ 78	B183924500B	18	12·31·58	B3029145000	12	39
B163214500E	20	15·75~ 78	B183924500C	20	12·31·58	B3030145000	8	29
B163214500E	38	40·41	B1850512000	32	45	B3031141H00	8	10
B163214500F	24	50·56~ 58	B1851512000	32	42	B3031141H00	22	33
B163214500G	24	50·56~ 58	B185351200AA	20	18·71~ 74	B3032141H00	8	9
B163214500H	24	50·56~ 58	B185351200BA	20	18·71~ 74	B3033141H00	12	4
B163214500J	24	50·56~ 58	B185351200CA	18	18·71~ 74	B3034141H00	12	3
B163214500J	38	40·41	B185351200D	20	18·71~ 74	B3035141H00	12	8
B1633245000	26	28	B185351200E	20	18·71~ 74	B3036141H00	12	1
B1634141H00A	30	10	B1901141H00	6	30	B3037141HA0	12	5
B1634145000	18	44	B1901141HA0	6	29	B3038141H00	12	15
B1635145000	18	40	B1902115000	6	37	B3111126000	2	17
B1636141H0A	30	5	B1903141H00	6	34	B3115552000	2	19
B1636145000	18	45	B1904115000	6	31	B3118552F00	2	13
B1637141H00	30	4	B2733761000	28	49	B3120125000	2	23
B1637145000	20	46	B3001141HA0	6	16	B3126012000	2	20
B1638141H00	30	9	B3002141H00	6	19	B3127127000	2	12
B1638245000	26	36	B3003141H00A	14	47	B3128012000	2	18
B1639145000	26	27	B3005141H00	8	2	B3129053000	2	22
B1640145000	26	10	B3005141H00	12	18	B3132552000	2	21
B1641245000	26	25	B3006141H00	8	8	B3134141H00	16	34
B1642245000	26	26	B3007141H00	14	49	B3214047000	2	8
B1643145000	18	38	B3008141H00	14	52	B3216047000	2	10
B1644245000	26	34	B3009141H0A	14	50	B3414245000	16	42
B1645245000	26	30	B3010141H00	14	51	B3415145000	16	44
B1646201000	30	28	B3011141H00	12	46	B3416141H00A	16	37
B1646245000	18	24	B3011141H0A	12	44	B3420245000	34	12
B1647145000	18	41	B3012141H00A	12	10	B34202450A0	34	11
B1647226000	30	26	B3013141H0A	12	12	B3421245000	34	29
B1648122000	30	29	B3013141H0B	12	40	B34212450A0	34	28
B1651245000	18	42	B3014141H00B	12	11	B3422245000	34	13
B1652245000	26	31	B3015141H00	8	23	B3423245000	34	14
B1660145000	18	43	B3015141H00	12	20	B3424141H00	34	17
B1801145000	18	39	B3016141H00	12	9	B3424245000	34	19
B1802245000	18	36	B3017141H00B	12	22	B3425141H00	34	18
B1803145000	18	32	B3020141H00	8	12	B3425245000A	34	20
			B3023141H00A	12	35	B34262450A0	34	22
			B3023141HA0A	12	34	B3433141H0A	34	15
			B3024141H00	12	36	B3434141H00	34	16
						B35031450A0	32	10
						B3504201000	32	9
						B3505145000	32	3

NUMERICAL INDEX OF PARTS

PART NO	PAGE	REF NO.	PART NO	PAGE	REF NO.	PART NO	PAGE	REF NO.
B3506245000	32	22	CQ202000000	32	11	D2406245E0A	22	14
B35112460A0	32	38	CS0510713SD	16	41	D2408245E00	22	5
B3512246000	32	39	D1105145E00	2	32	D2409245E00	22	24
B3515201000	32	13	D1105145E0B	40	2	D2410245E00	22	26
B3517009000	4	77	D1105145E0T	40	3	D2411245E00	22	17
B3520245000	32	32	D1113126WA0	38	27	D2412245E00	18	21
B3520586000	32	4	D1114245F00	38	33	D2413245E00	18	22
B3523245000	32	27	D1126560E00A	2	39	D2414141E00	24	52
B3525245000	32	35	D1129141EA0	38	29	D2414245E00	22	36
B3527012000	32	12	D1171145E00	2	43	D2414245E0A	24	55
B35272450A0	32	34	D1172245E00	20	70	D2415245E00	22	35
B3534012000	32	7	D1173145E00	2	29	D2415245EA0	22	32
B3534155000	32	21	D1201141E00A	6	1	D2416245E00	22	23
B3537201000	30	32	D1206141E00	6	27	D2417245EA0	22	20
B3537201000	32	37	D1403141E00	6	14	D2418245E00	22	37
B3538112000	16	23	D1418141E00	6	22	D2419245E00	18	7
B71140120A0	34	8	D1512141E00	16	26	D2420145E00	18	4
B820424500A	38	13	D1525141EA0	8	27	D2421245E00	22	30
B8228125000	38	2	D1525141EAA	40	10	D2423245E00	22	34
B910114500A	36	2	D1613145E00	26	32	D2424145E00	2	44
B91011450AA	36	1	D1613145E0A	40	6	D2425245E00	2	45
B9101552000	38	3	D1613145E0B	40	7	D2426245E00	2	46
B91021450AA	36	4	D1613145E0T	40	8	D2427145E00	22	27
B9106145000	36	6	D1621141E00	28	53	D2428141E00	22	4
B9107145000	36	7	D1624141E0A	28	44	D2428245E00	22	43
B9108145000	36	8	D1630145EA0A	18	13	D2429145E00	4	52
B9110012000	38	4~6	D1680141EA0	28	55	D2430245EA0	22	31
B9110245000	38	19	D1681141E0A	26	13	D2431245E00	18	5
B9111012000	38	4~6	D1682141E00	26	37	D2432245E00	22	18
B9111245000	38	15	D1683141E00	28	50	D2432245E0A	24	53
B9112012000	38	7·8	D1684141E00A	26	21	D2433245E00	20	60
B9113012000	38	7·8	D1685141E00	28	39	D2434245E00	22	54
B9117201000	20	53	D1686141E00	28	51	D2434245E00	24	54
B9117201000	38	9	D1687141E00	26	23	D2435245E00	4	51
B91210120A0	38	11	D1830560EA0	20	52	D2436141E00	18	20
B9130245000	38	16	D1837145E0K	20	54	D2436245E00	4	53
BP300000000	28	48	D1837145EAA	20	55	D2441141E00	18	19
BT0400251EC	32	36	D2120555C00	22	45	D2464555B00	26	16
BT0500300EA	32	33	D2401245E00	18	16	D3111141EAA	2	14
BT0630520Z0	38	26	D2402245E00	18	11	D3142141E00	4	82
CM300200001	4	86	D2402245E00	38	21	D3142141E0A	2	11
CM301300001	4	85	D2403245E00	22	7	D3149141E00	16	13
CM500300001	36	3	D2404245E00	22	11	D3151141E00	16	21
CQ200000000	30	17	D2405245E00	18	35	D3152141E00	16	20
CQ202000000	8	45	D2405245E00	22	13	D3153141E00	16	6

NUMERICAL INDEX OF PARTS

PART NO	PAGE	REF NO.	PART NO	PAGE	REF NO.	PART NO	PAGE	REF NO.
D3154141E00	16	8	NS6620310SP	16	38	SS2090710TP	4	50
D3155141E00	16	11	NS6660430SP	8	22	SS2090710TP	38	30
D3156141E00	16	5	NS6680320SP	12	2	SS2090810SP	20	59
D3157141E0A	16	3	NS6680410SP	30	18	SS2110915SP	2	31
D3158141E00	16	25	PS0300132KH	16	28	SS2110930SP	32	41
D3159141E00	16	17	PS0300201KP	12	6	SS5060310SP	2	24
D3160141E00	16	24	RE0250000K0	16	10	SS5090610SP	2	40
D3161560EA0	2	5	RE0300000K0	26	35	SS5110710SP	18	23
D3162555B00	2	7	RE0400000K0	12	37	SS6060210SP	20	48
D3162560E00	2	6	RE0400000K0	26	15	SS6081210SP	20	57
D3168555H0B	2	9	RE0600000K0	26	24	SS6090510TP	22	44
D3410141E0AA	16	39	RE0700000K0	14	54	SS6090610SP	20	64
D3501245E00	22	6	RE0700000K0	20	63	SS6090670TP	6	36
D3502245E00	32	19	RE0700000K0	30	14	SS6090810SP	22	28
D3513245EA0	32	17	RO061180100	4	61	SS6110480SP	36	9
D3916481C00	32	24	RO074240100	30	6	SS6110610TP	8	25
D6037245GA0	24	59	SD0550271TP	16	18	SS6111610SP	4	48
D7101245E00	38	22	SD0600271SP	16	32	SS6121050SP	30	12
D7102245E00	38	23	SD0600321SP	16	33	SS6121210SP	12	30
D8201145G00	34	2	SD0630301SP	16	15	SS6121210SP	30	25
D8201145GA0	34	1	SD0640321SP	16	19	SS6151220SP	30	31
D8204555D00	34	5	SD0640321SP	18	6	SS6151440SP	14	48
D9117141E00	20	61	SD0720331SP	28	52	SS6661110SP	30	1
D9117141E00	38	10	SD0790351SP	16	36	SS7060310SP	18	10
E9862201000	20	50	SD0800352SP	4	69	SS7060610SP	4	73
GES12153000	24	47	SD0850751SP	8	1	SS7080510TP	6	20
GES12153000	32	30	SD0850751SP	12	19	SS7080520SP	26	29
GES12153000	38	20	SD0950802SH	30	15	SS7090610SP	12	25
GES12155000	2	4	SD0991551SP	16	35	SS7090620TP	2	41
HK034610140	24	60	SK1483201SE	34	10	SS7090710SP	26	38
HK03464000B	24	62	SK3311600SE	34	6	SS7090910SP	32	44
J106600000F	38	14	SK3482500SC	36	12	SS7091110SP	8	17
MAO11532000	38	32	SK3513200SC	34	9	SS7091110SP	12	21
MAT81126T00	26	12	SM1030601SA	16	9	SS7091110SP	30	30
MDP170B2100	6	24	SM4030601SB	16	1	SS7091410SP	18	1
MDP170B2102	38	1	SM4040601SC	38	34	SS7110510SP	2	28
MTJVM00520A	38	38	SM6081552TP	4	63	SS7110540SP	16	40
MTSP00750B0	38	37	SM8040602TP	22	2	SS7110540SP	18	17
NM6060001SD	38	18	SM9061203SE	34	27	SS7110710SP	2	80
NS6090310SP	32	43	SQ1110401MZ	24	51	SS7110710SP	4	80
NS6150310SP	8	3	SQ1110401MZ	32	8	SS7110710SP	16	22
NS6150310SP	12	14	SQ1150451MZ	32	40	SS7110710SP	22	46
NS6150430SP	28	54	SS2090710SL	4	56	SS7110710SP	24	46
NS6150430SP	38	24	SS2090710SP	4	59	SS7110710SP	26	14
NS6160520SP	12	32	SS2090710TP	2	50	SS7110710SP	32	23

NUMERICAL INDEX OF PARTS

PART NO	PAGE	REF NO.	PART NO	PAGE	REF NO.
SS7110710SP	38	25	SS8660610TP	12	29
SS7110840SP	8	16	SS8660612TP	22	8
SS7110910SP	12	13	SS8660810TP	8	44
SS7110910SP	16	7	SS8681950SP	6	26
SS7110910SP	22	42	SS8701042TP	18	26
SS7111120SP	12	24	SS9111010SP	26	7
SS7111310SP	32	25	SS9111010SP	32	20
SS7111410SP	4	81	SS9181520CP	8	30
SS7111410SP	18	9	SS9182010SN	34	21
SS7111410TP	8	11	SS9660720SP	30	21
SS7112420SP	2	34	SS9660910SP	30	20
SS7112420SP	32	5	TA0550604R0	4	78
SS7120640SP	16	27	TA0550604R0	10	47
SS7120910TP	12	16	TA0750704R0	4	79
SS7121410TP	28	46	TA1120804R0	4	72
SS7151210SP	26	17	TA1250406R0	4	67
SS7151210SP	36	10	TA2100904R0	4	71
SS7620750SP	26	41	WP0320501SC	16	2
SS7620750SP	28	41	WP0371026SD	18	3
SS7680870SP	4	62	WP0371026SD	22	29
SS7681750TP	6	28	WP0430800SC	38	35
SS8090410SP	18	8	WP0501016SC	36	13
SS8090670SP	2	16	WP0501016SD	22	38
SS8110410TP	2	36	WP0501016SD	26	6
SS8110410TP	18	27	WP0621016SD	16	43
SS8110750SP	16	29	WP0621016SD	26	19
SS8150510TP	12	45	WP0650876SD	12	33
SS8150510TP	28	45	WP0751576SD	38	17
SS8150710SP	2	38	WS0410002KN	18	2
SS8150710SP	6	7	WS0410002KN	38	36
SS8150710SP	18	28	WS0631510KP	26	18
SS8150710SP	30	27	WT0530002KS	22	39
SS8150710SP	32	16			
SS8150750SP	12	41			
SS8150830SP	18	30			
SS8151150SP	6	21			
SS8151230SP	22	25			
SS8151550SP	6	42			
SS8151550SP	8	13			
SS8151550SP	18	37			
SS8660530TP	12	7			
SS8660530TP	18	34			
SS8660530TP	22	12			
SS8660610TP	6	25			
SS8660610TP	8	24			