

MODEL : PLN-985,986

List No : 0529-06

# PARTS LIST

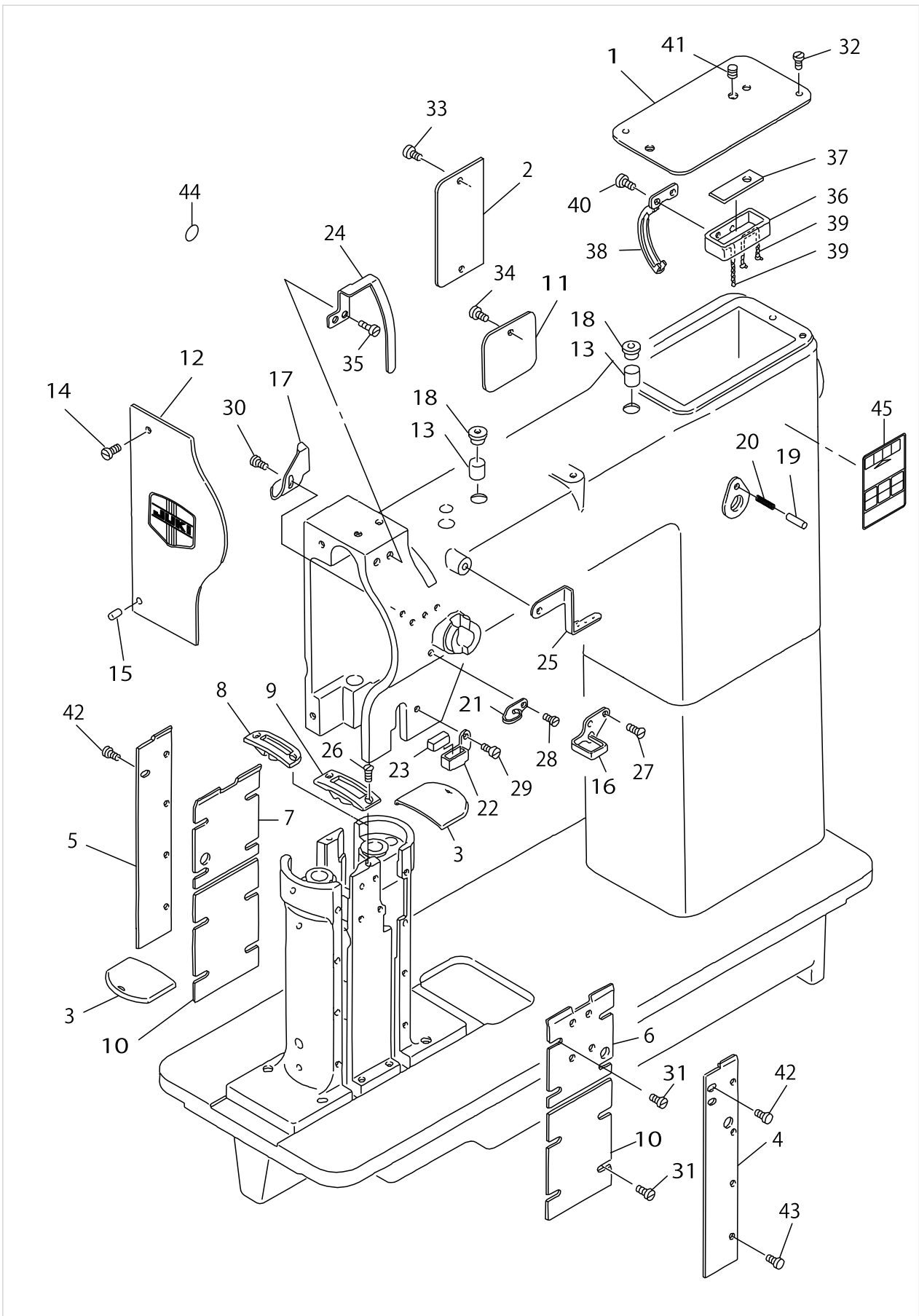
Published:05/12/2017

## CONTENTS

---

FRAME & MISCELLANEOUS COVER COMPONENTS .....	1
MAIN SHAFT & THREAD TAKE-UP LEVER COMPONENTS .....	3
ARM SHAFT COMPONENT .....	5
NEEDLE BAR COMPONENTS .....	7
PRESSURE BAR COMPONENTS .....	9
FEED MECHANISM COMPONENTS (1).....	13
FEED MECHANISM COMPONENTS (2).....	17
HOOK DRIVING SHAFT & HOOK COMPONENTS .....	19
THREAD TENSION COMPONENTS (PLN-985).....	21
THREAD TENSION COMPONENTS (PLN-986).....	23
KNEE LIFTER & OIL PAN COMPONENTS.....	25
BELT COVER & BOBBIN WINDER COMPONENTS .....	27
THREAD STAND COMPONENTS (PLN-985) .....	29
THREAD STAND COMPONENTS (PLN-986) .....	31
TABLE COMPONENTS .....	33
ACCESSORIES PARTS COMPONENTS .....	35
GAUGE PARTS COMPONENTS .....	37
TABLE OF GAUGE FOR PLN-986 .....	39
LIST FOR INFORMATION OF CHANGE.....	41
HOW TO MAKE USE OF THIS PARTS LIST .....	42

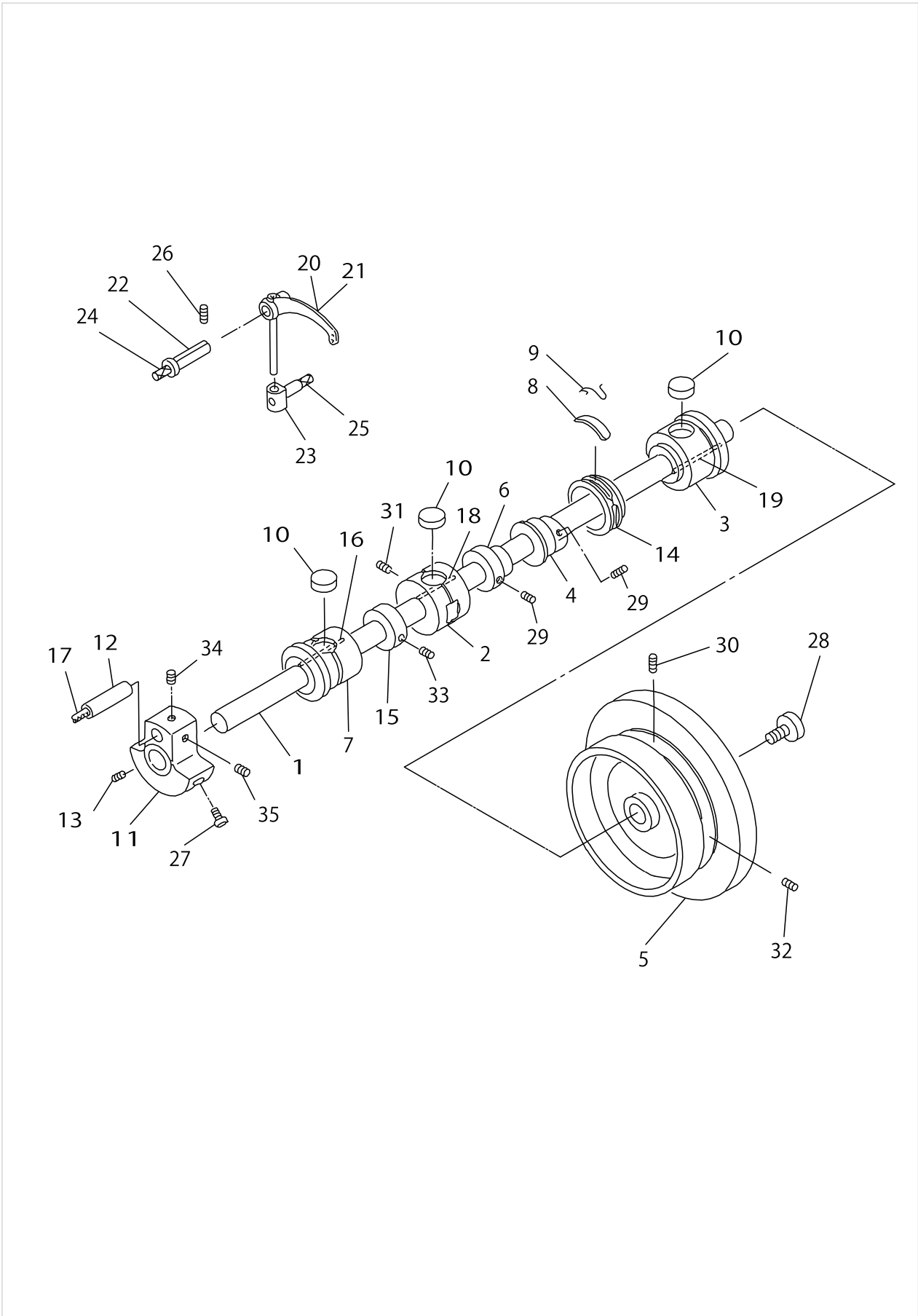
FRAME & MISCELLANEOUS COVER COMPONENTS



FRAME & MISCELLANEOUS COVER COMPONENTS

No.	Supply Code	Parts No.	Replacement	Parts name	Remarks	Choice	Step	Level	Cons	Qty	Rep. QTY
1		B1150241H00		TOP COVER						1	
2		B1118241H00		SIDE PLATE						1	
3		21001508		SLIDE PLATE						2	
4		21001607		COVER A	FOR PLN-985					1	
5		21001706		COVER B	FOR PLN-985					1	
6		21017009		COVER A	FOR PLN-986					1	
7		21017108		COVER B	FOR PLN-986					1	
8		21023007		THROAT PLATE	FOR PLN-985					1	
9		21032107		THROAT PLATE 1/16	FOR PLN-986					1	
10		21017207		COVER C	FOR PLN-986					2	
11		21024302		SIDE COVER						1	
12	D	21025655		FACE PLATE ASM.						1	
13		B3517009000		OIL FELT REAR						2	
14		SS7090610SP		SCREW 9/64-40 L=6						1	
15		B1103051000		FACE PLATE PIN						1	
16		B1129521000		THREAD GUIDE, UPPER						1	
17		B1140051000		TAKE-UP OIL SPLASHER						1	
18		B1156115000		RUBBER PLUG						2	
19		B1147555000		PIN						1	
20		22912109		FEED REGULATOR PIN SPRING						1	
21		B1130051000		FRAME THREAD GUIDE, MIDDLE						1	
22		B1130528000		THREAD GUIDE, LOWER						1	
23		B1131528000		FELT						1	
24	D	B1158528000		THREAD TAKE-UP LEVER COVER						1	
25		B1131512000		L-SHAPED THREAD GUIDE	FOR PLN-985					1	
26		SS2090840SP		SCREW						2	
27		SS2090520SL		SCREW 9/64-40 L=5						2	
28		SS2090710TP		SCREW 9/64-40 L=7.2						1	
29		SS2090710TP		SCREW 9/64-40 L=7.2						1	
30		SS3090520SP		SCREW 9/64-40 L=4.5						1	
31		SS4090610SP		SCREW 9/64-40 L=6						16	
32		SS7110710SP		SCREW 11/64-40 L=7						2	
33	R	SS7120910SP	SS7120910TP	SCREW 3/16-28 L=9						2	1.00
34		SS7090610SP		SCREW 9/64-40 L=6						1	
35		SS7150740SP		SCREW 15/64-28 L=7						2	
36		B8217241H00		OIL RESERVOIR						1	
37		B8218241H00		OIL PAD						1	
38		B3502115000		OIL WICK RETAINER						1	
39		CQ202000000		OIL WICK						.34	
40	R	SS7080510SP	SS7080510TP	SCREW 1/8-44 L= 4.5						2	1.00
41	R	SS7111810SP	SS7111810TP	SCREW 11/64-40L=18						1	1.00
42		SS7110710SP		SCREW 11/64-40 L=7	FOR PLN-985					3	
43		SS4090610SP		SCREW 9/64-40 L=6	FOR PLN-985					8	
44		22901805		GROUND MARK						1	
45		CM301200001		SAFETY LABEL_S						1	

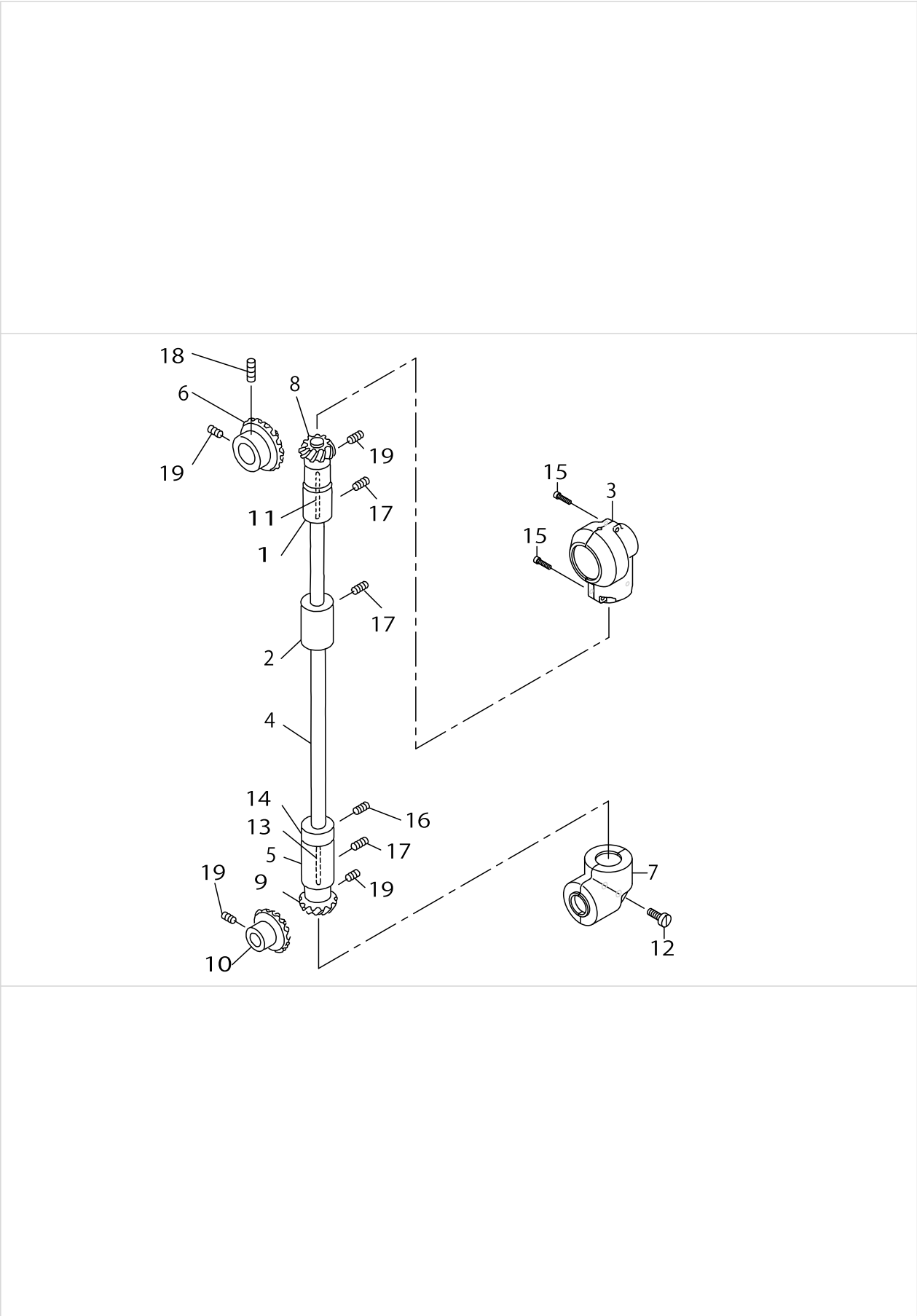
MAIN SHAFT & THREAD TAKE-UP LEVER COMPONENTS



MAIN SHAFT & THREAD TAKE-UP LEVER COMPONENTS

No.	Supply Code	Parts No.	Replacement	Parts name	Remarks	Choice	Step	Level	Cons	Qty	Rep. QTY
1		B1201241HA0		MAIN SHAFT ASM.						1	
2	D	B1203241H00		BUSHING, INTERMEDIATE						1	
3		B1204241H00		BUSHING, REAR						1	
4		B1211141H00		FEED ECCENTRIC CAM						1	
5		B1227141H0AA		HANDWHEEL						1	
6		B1208141H00		FEED CAM ASM.						1	
7		B1202241H00		MAIN SHAFT BUSHING, FRONT						1	
8		B1212012000		OIL FELT						1	
9		B1213012000		FELT RETAINER						1	
10		B1203051000		OIL FELT						3	
11		B1206051000		COUNTERWEIGHT						1	
12		B1210051000		NEEDLE BAR CRANK PIN						1	
13		SS8681650TP		SCREW 9/32-28 L=16						1	
14		B1211226000		ECCENTRIC RETAINER HOUSING						1	
15		CS1271012SH		THRUST COLLAR D=12.7 W=10						1	
16		CQ252000000		OIL WICK						.1	
17		CQ505000000		OIL WICK						.03	
18		CQ252000000		OIL WICK						.03	
19		CQ252000000		OIL WICK						.04	
20		B1905245000		THREAD TAKE-UP LEVER	FOR PLN-985					1	
21		21031000		THREAD TAKE-UP LEVER	FOR PLN-986					1	
22		B1906051000		TAKE-UP LEVER PIN						1	
23		B1907051000		TAKE-UP LEVER THRUST PIN						1	
24		CQ252000000		OIL WICK						.08	
25		CQ252000000		OIL WICK						.03	
26		SS8150750SP		SCREW 15/64-28 L=7						1	
27		SS7681750TP		SCREW 9/32-28 L=16.5						1	
28		SS7701010SP		SCREW 5/16-24 L=10						1	
29	R	SS8150710SP	SS8150710TP	SCREW 15/64-28 L=7						4	1.00
30		SS8151550SP		SCREW 15/64-28 L=15						1	
31		SS8151550SP		SCREW 15/64-28 L=15						1	
32		SS8151780SP		SCREW 15/64-28 L=17.0						1	
33		SS8660610TP		SCREW 1/4-40 L=6						2	
34		SS8680540SP		SCREW 9/32-28 L=4.5						1	
35		SS8680730SP		SCREW 9/32-28 L=7						1	

ARM SHAFT COMPONENT

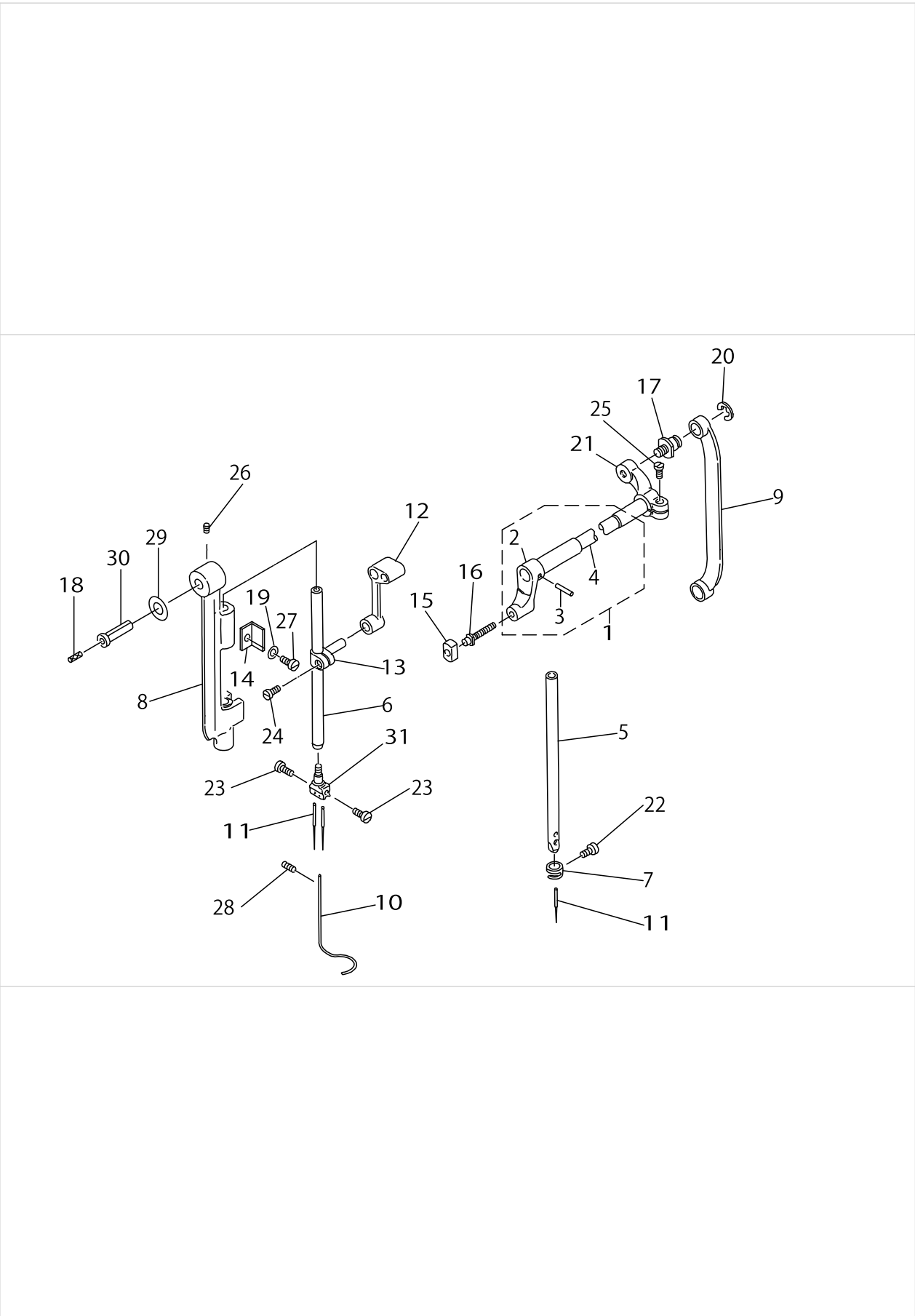


ARM SHAFT COMPONENT

No.	Supply Code	Parts No.	Replacement	Parts name	Remarks	Choice	Step	Level	Cons	Qty	Rep. QTY
1		B1302241H00		BUSHING, UPPER						1	
2		B1303271000		BUSHING, LOWER						1	
3		B13052710B0		GEAR CASE ASM.						1	
4		21002704		ARM SHAFT						1	
5		21002803		ARM SHAFT, LOWER BUSHING						1	
6	D	B1305012000		GEAR						1	
7		B13072710A0		PINION CASE ASM.						1	
8	R	B1306155000	B13061550A0	PINION						1	1.00
9	R	B1307155000	B13071550A0	MITRE GEAR LARGE						1	1.00
10	R	B1308155000	B13081550A0	MITRE GEAR SMALL						1	1.00
11		CQ252000000		OIL WICK						.06	
12	D	SM6051410SC		SCREW M5X0.8 L=14						1	
13		CQ252000000		OIL WICK						.03	
14		CS0791016SH		THRUST HOLDER D=7.94 W=10						1	
15		SM6031202TP		SCREW M3X0.5 L=12						2	
16		SS8110520TP		SCREW 11/64-40 L= 4.5						2	
17		SS8151550SP		SCREW 15/64-28L=15						3	
18		SS8660610TP		SCREW 1/4-40 L=6						1	
19		SS8660810TP		SCREW 1/4-40 L=8						7	



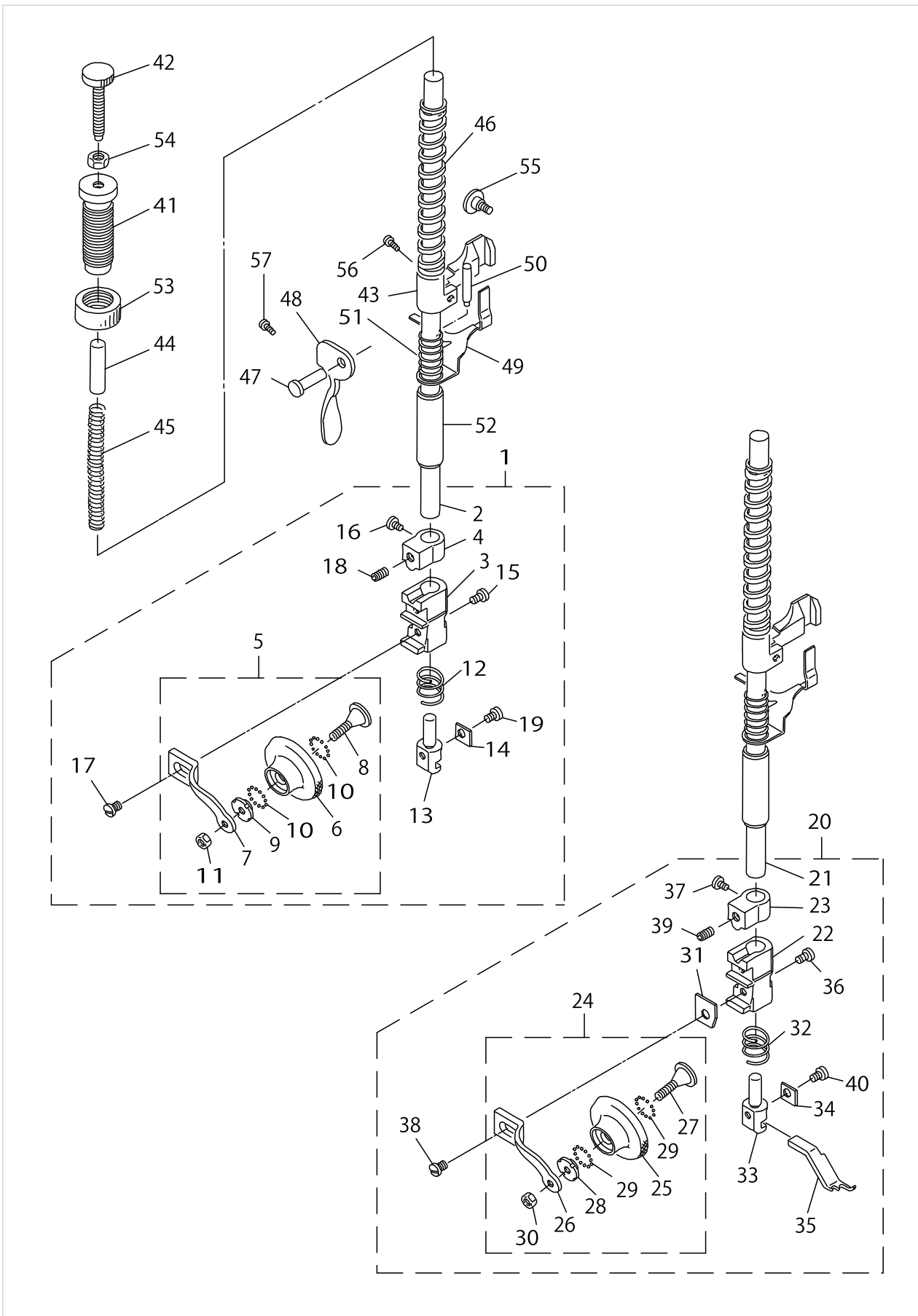
NEEDLE BAR COMPONENTS



NEEDLE BAR COMPONENTS

No.	Supply Code	Parts No.	Replacement	Parts name	Remarks	Choice	Step	Level	Cons	Qty	Rep. QTY
1		B1429241HB0		NEEDLE BAR FRAME LOCK SHAFT						1	
2		B1428563000		ROCK SHAFT FRONT CRANK				*		1	
3		PT0301600S0		TAPERED PIN 3.0X16				*		1	
4		B1429241H00		NEEDLE BAR FRAME LOCK SHAFT				*		1	
5		B1401246000		NEEDLE BAR	FOR PLN-985					1	
6	D	21030903		NEEDLE BAR	FOR PLN-986					1	
7		B1418141H00		NEEDLE BAR THREAD GUIDE	FOR PLN-985					1	
8		40021374		NEEDLE BAR FLAME						1	
9		21025804		DRIVING ROD						1	
10		21003108		SAFETY COVER						1	
11		MDP500B1600		NEEDLE DPX5 #16	1 PIECE U- SE FOR PLN-985					2	
12		B1408051000		NEEDLE BAR CRANK ROD						1	
13		B1411051000		NEEDLE BAR CONNECTION						1	
14	D	B1423051000		NEEDLE BAR FRAME GUIDE						1	
15		B1414232000		SQUARE BLOCK						1	
16		B1417771000		NEEDLE BAR FRAME SLIDE BLOCK SHAFT						1	
17		B1424158000		HINGE SCREW						1	
18		CQ252000000		OIL WICK						.08	
19		WP0480856SP		WASHER 4.8X8.4X0.8						1	
20		RE0700000K0		E-RING 7						1	
21		B1431241H00		ROCK SHAT REAR CRANK						1	
22	R	SS7080510SP	SS7080510TP	SCREW 1/8-44 L= 4.5	FOR PLN-985					1	1.00
23		SS6080360SP		SCREW	FOR PLN-986					2	
24	R	SS7090910SP	SS7090910TP	SCREW 9/64-40 L= 8.5						1	1.00
25		SS7151210SP		SCREW 15/64-28 L=12						1	
26	R	SS8151150SP	SS8151150TP	SCREW 15/64-28 L=10.5						1	1.00
27		SS9111010SP		SCREW 11/64-40 L=9.5						1	
28	R	SS8110510SP	SS8110520TP	SCREW 11/64-40 L=5						1	1.00
29		B1208019000		WASHER						1	
30		B1906051000		TAKE-UP LEVER PIN						1	
31		21017405		NEEDLE STOPPER 1.6 1/16	FOR PLN-986					1	

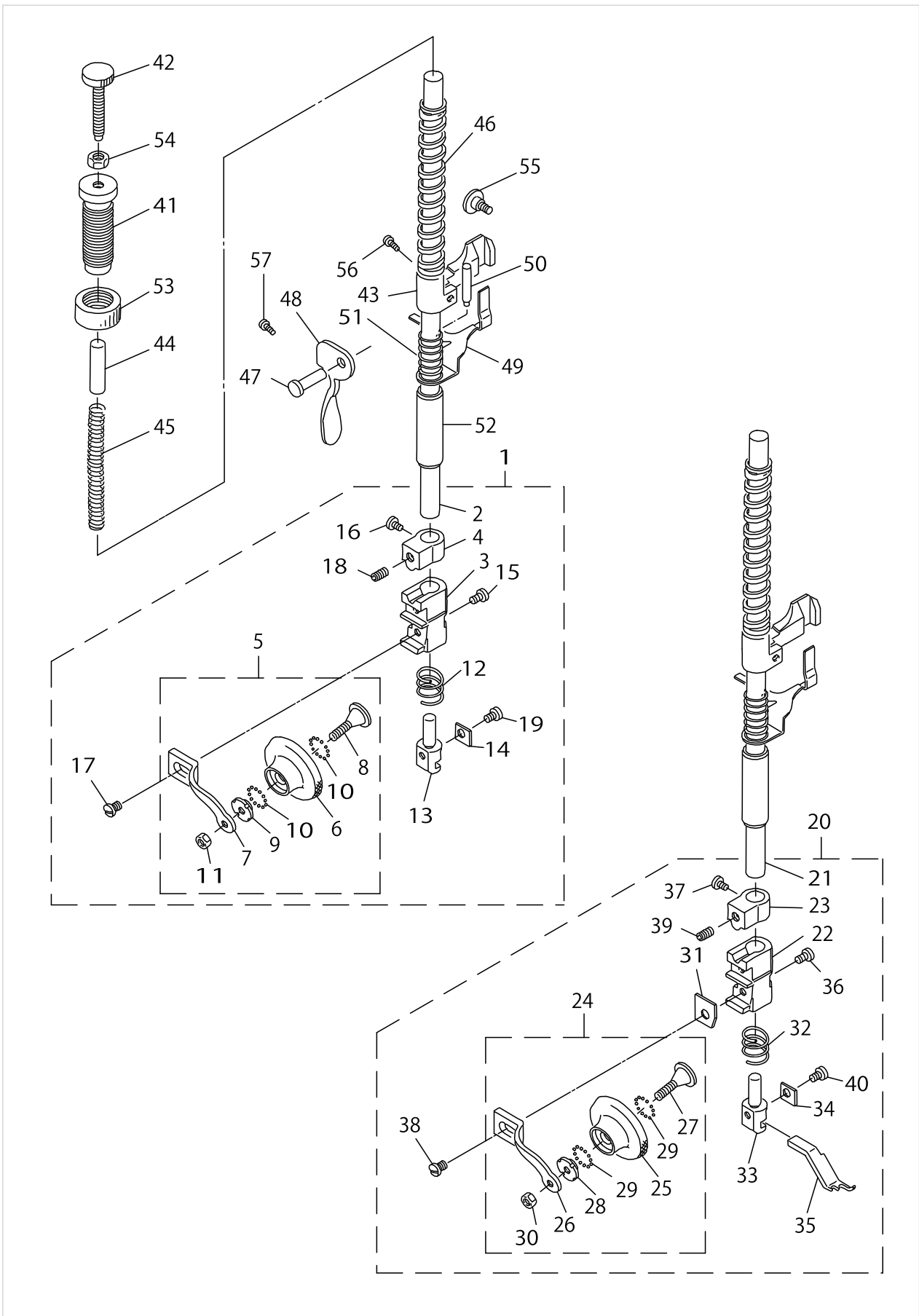
PRESSURE BAR COMPONENTS



PRESSURE BAR COMPONENTS

No.	Supply Code	Parts No.	Replacement	Parts name	Remarks	Choice	Step	Level	Cons	Qty	Rep. QTY
1		21025952		PRESSER BAR ASM.	FOR PLN-985					1	
2	R	21003207	21003256	PRESSER BAR				*		1	1.00
3	D	21004205		PRESSER BASE				*		1	
4	D	21004304		STOPPER				*		1	
5		21005459		ROLLER PRESSER ASM.				*		1	
6		21005400		ROLLER				*		1	
7		21005509		ROLLER HOLDER				*		1	
8		21005608		ROLLER STOPPER				*		1	
9		21005707		BALL SEAT NUT				*		1	
10		21005806		BEARING BALL				*		24	
11	R	21005905	NS6120310SP	ROLLER STOPPER NUT				*		1	1.00
12		21004403		BASE SPRING				*		1	
13		21020102		LOWER NEEDLE GUIDE SUPPORT				*		1	
14		21020201		GUIDE SUPPORT PLATE				*		1	
15		SS6080360SP		SCREW				*		2	
16		21004601		SCREW				*		1	
17		21004502		SCREW	FOR PLN-985			*		1	
18	R	SS8150710SP	SS8150710TP	SCREW 15/64-28 L=7				*		1	1.00
19		21020607		SCREW				*		1	
20		21030051		PRESSER BAR ASM.	FOR PLN-986					1	
21	R	21003207	21003256	PRESSER BAR				*		1	1.00
22	D	21004205		PRESSER BASE				*		1	
23	D	21004304		STOPPER				*		1	
24		21005459		ROLLER PRESSER ASM.				*		1	
25		21005400		ROLLER				*		1	
26		21005509		ROLLER HOLDER				*		1	
27		21005608		ROLLER STOPPER				*		1	
28		21005707		BALL SEAT NUT				*		1	
29		21005806		BEARING BALL				*		24	
30	R	21005905	NS6120310SP	ROLLER STOPPER NUT				*		1	1.00
31		21020003		WASHER	FOR PLN-986			*		1	
32		21004403		BASE SPRING				*		1	
33		21020102		LOWER NEEDLE GUIDE SUPPORT				*		1	
34		21020201		GUIDE SUPPORT PLATE				*		1	
35		21033006		NEEDLE GUIDE 1/16	FOR PLN-986			*		1	
36		SS6080360SP		SCREW				*		2	
37		21004601		SCREW				*		1	
38		21020706		SCREW	FOR PLN-986			*		1	
39	R	SS8150710SP	SS8150710TP	SCREW 15/64-28 L=7				*		1	1.00
40		21020607		SCREW				*		1	
41		21006408		ADJUST SCREW A						1	
42		21006507		ADJUST SCREW B						1	
43		21026000		PRESSER LIFTER LEVER						1	
44		21006101		GUIDE SHAFT						1	
45		21006002		ADJUST SPRING B						1	
46		B1510141H00		PRESSER SPRING						1	

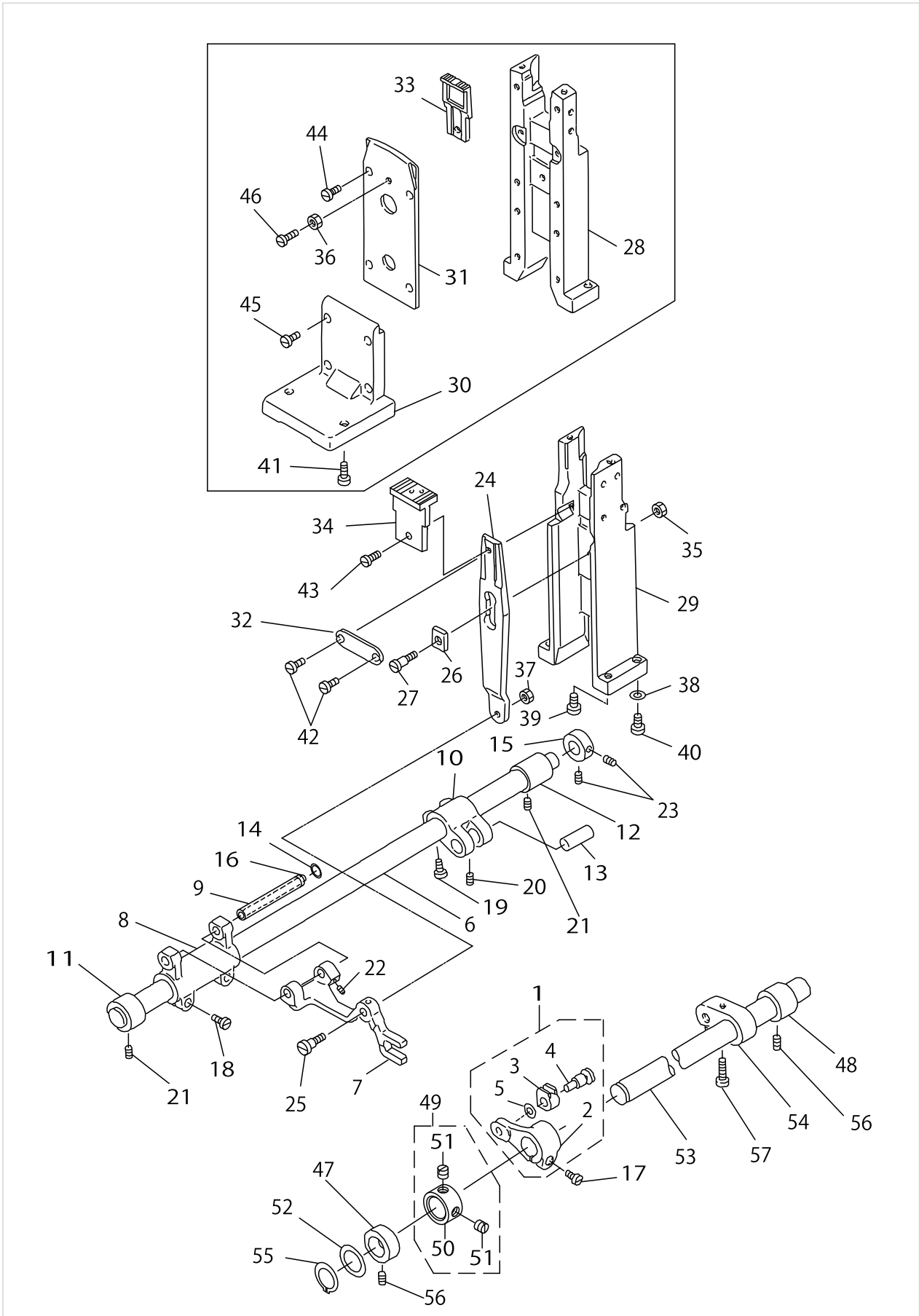
PRESSURE BAR COMPONENTS



PRESSURE BAR COMPONENTS

No.	Supply Code	Parts No.	Replacement	Parts name	Remarks	Choice	Step	Level	Cons	Qty	Rep. QTY
47		B1513141H00		HAND LIFTER SHAFT						1	
48		B1512141H00		HAND LIFTER						1	
49	R	B146105300A	B14610530A0	THREAD RELEASE GUIDE						1	1.00
50	R	B146105300B	B14610530A0	THREAD RELEASE GUIDE PIN						1	1.00
51		B1462053000		THREAD RELEASE SPRING						1	
52		B1510155000		PRESSER BAR LOWER BUSHING						1	
53	R	22907604	22907554	PRESSER SPRING REGULATOR NUT						1	1.00
54		NS6110530SP		NUT 11/64-40						1	
55		SD0800481SP		HINGE SCREW D= 8 H= 4.9						1	
56	R	SS7111310SP	SS7111310TP	SCREW 11/64-40 L=12.8						1	1.00
57		SS8110750SP		SCREW 11/64-40 L= 6.5						1	

FEED MECHANISM COMPONENTS (1)

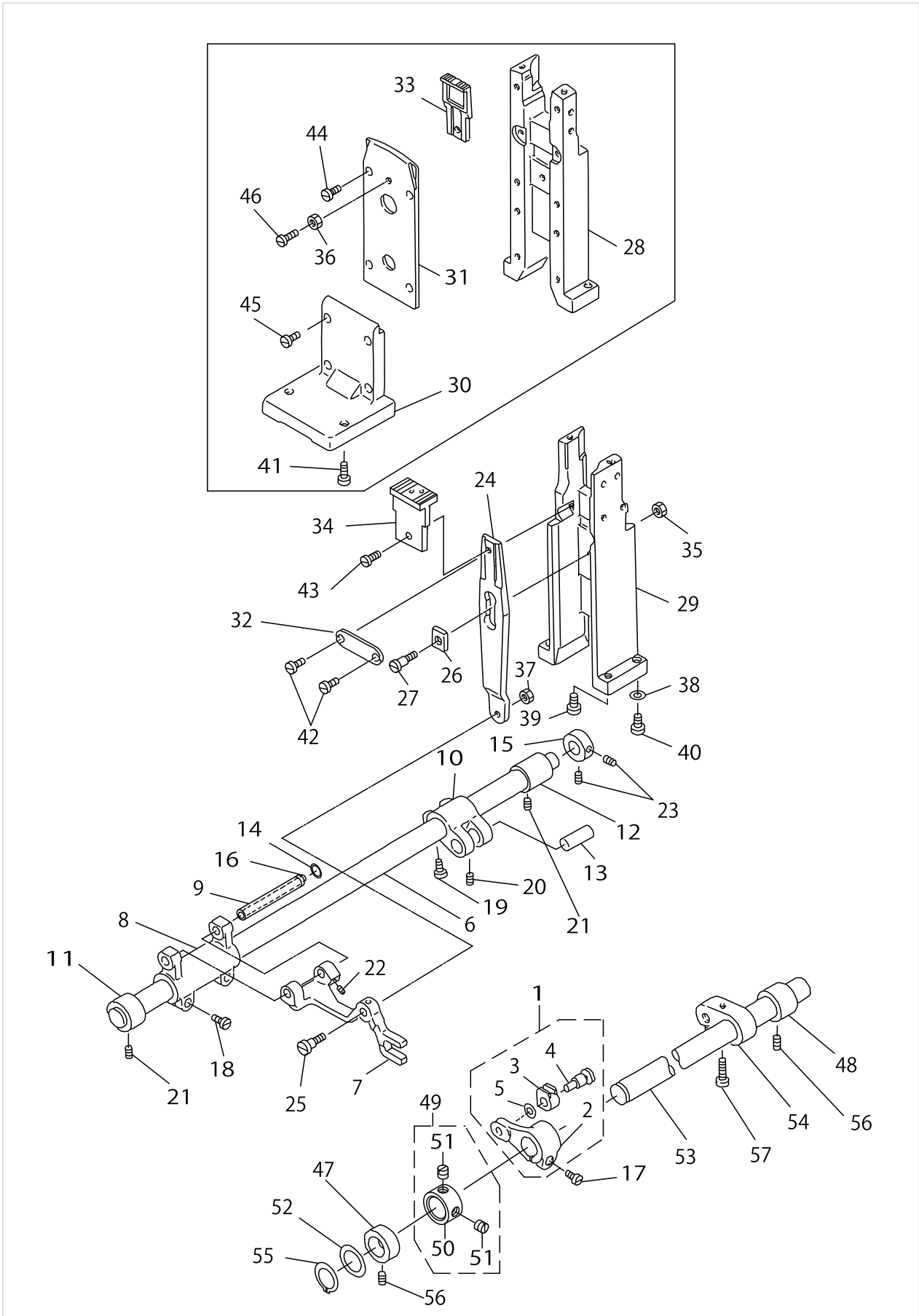


FEED MECHANISM COMPONENTS (1)

No.	Supply Code	Parts No.	Replacement	Parts name	Remarks	Choice	Step	Level	Cons	Qty	Rep. QTY
1		21009659		FEED ARM, FRONT ASM.						1	
2		21009600		FEED ARM, FRONT				*		1	
3		B1705155000		FEED DRIVING SLIDE BLOCK				*		1	
4		B1706155000		FEED DRIVING SLID-E BLOCK HINGE				*		1	
5	R	B1707155000	31255300	FEED DRIVING SLID-E BLOCK WASHER				*		1	1.00
6		21006606		FEED ROCKERSHAFT						1	
7	D	21006705		FEED BAR						1	
8		21006804		FEED BAR ARM						1	
9		21008305		FEED BAR HINGE STUD						1	
10	D	21026109		FEED ROCKER ARM						1	
11		B1604141H00		BUSHING, FRONT						1	
12		B1602141H00		BUSHING, REAR						1	
13		B1611155000A		HINGE STUD FOR PITMAN						1	
14		RE0500000K0		E-RING						1	
15		CS1111019SH		THRUST COLLAR D=11.11 W=10						1	
16		CQ202000000		OIL WICK						.13	
17		SS7121410TP		SCREW 3/16-28 L=14						1	
18		SS6111210SP		SCREW 11/64-40 L=12						2	
19		SS6121210SP		SCREW 3/16-28 L=12						2	
20		SS7110720SP		SCREW 11/64-40 L=7						1	
21	R	SS8151150SP	SS8151150TP	SCREW 15/64-28 L=10.5						2	1.00
22		SS8620610TP		SCREW 3/16-32 L=6						1	
23		SS8660530TP		SCREW 1/4-40 L=4.5						2	
24		21006903		FEED LINK						1	
25		SD0640851SP		STEP-SCREW						1	
26		21007109		SLIDE BLOCK						1	
27		SD0640372SH		HINGE SCREW						1	
28	R	21009006	21008008	FEED LINK SUPPORT	FOR PLN-985					1	1.00
29		21020409		FEED LINK SUPPORT	FOR PLN-986					1	
30	D	21009105		SUPPORT	FOR PLN-985					1	
31	D	21009204		COVER	FOR PLN-985					1	
32		21009303		PRESSE PLATE						1	
33		21024500		FEED DOG	FOR PLN-985					1	
34	D	21031109		FEED DOG 1/16	FOR PLN-986					1	
35	D	NS6620310SN		NUT 3/16-32						1	
36		NS6660430SP		NUT 1/4-40	FOR PLN-985					1	
37		NS6110350SP		NUT 11/64-40						1	
38		WS0822010KP		SPRING WASHER 8.2X15X2						2	
39		SS7161640SP		SCREW 1/4-24 L=16.0	FOR PLN-986					2	
40		SS7702610SP		SCREW A						2	
41		SS7702610SP		SCREW A	FOR PLN-985					2	
42		SS2110920TP		SCREW 11/64-40 L=8.5						2	
43		SS7110510SP		SCREW 11/64-40 L=5						1	
44		SS7110710SP		SCREW 11/64-40 L=7	FOR PLN-985					4	
45	R	SS7111120SP	SS7111120TP	SCREW 11/64-40 L=10.5	FOR PLN-985					4	1.00



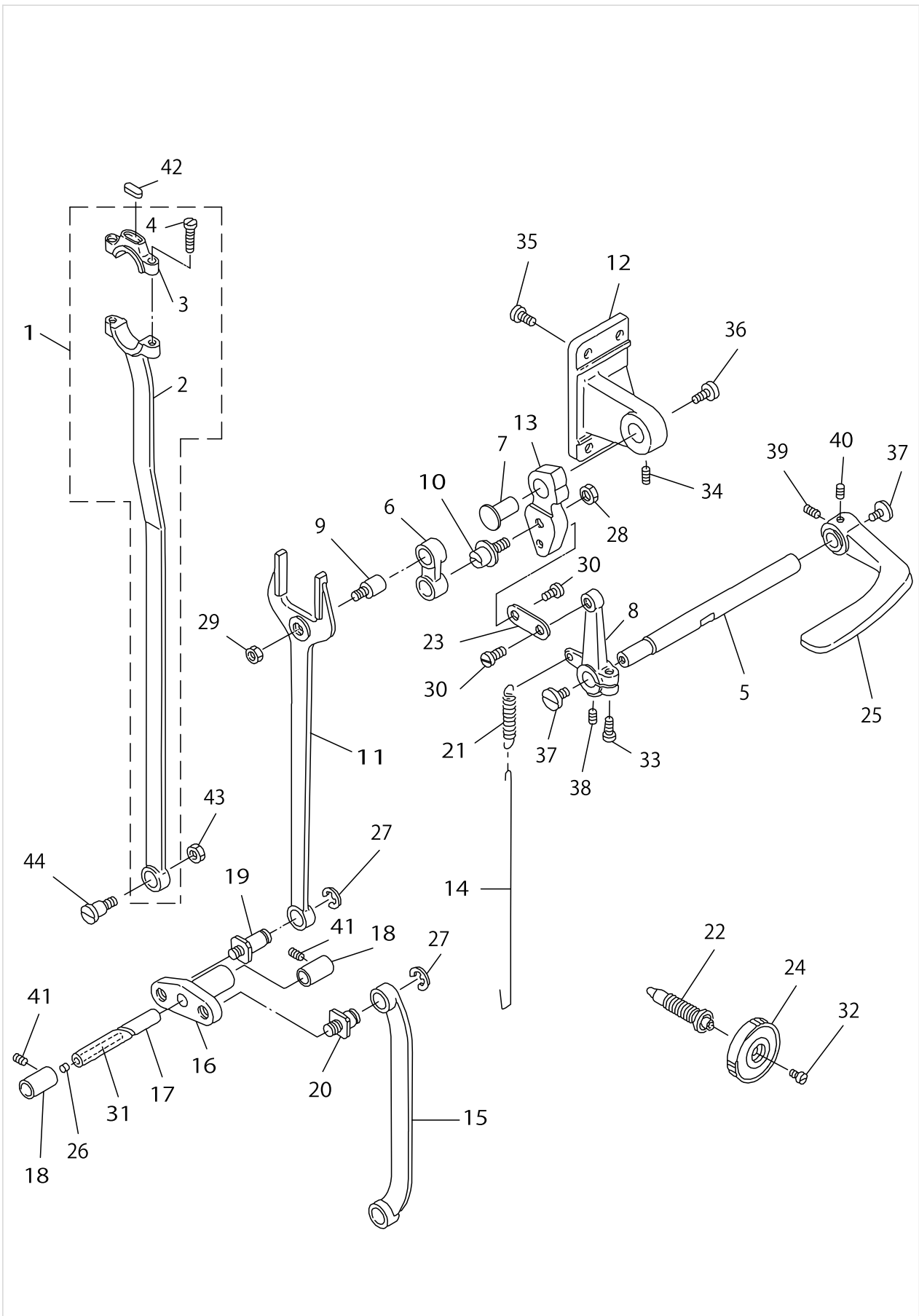
FEED MECHANISM COMPONENTS (1)



FEED MECHANISM COMPONENTS (1)

No.	Supply Code	Parts No.	Replacement	Parts name	Remarks	Choice	Step	Level	Cons	Qty	Rep. QTY
46		SS8660810TP		SCREW 1/4-40 L=8	FOR PLN-985					1	
47		B1604141H00		BUSHING, FRONT						1	
48	D	B1651141H00		BUSHING, INTERMEDIATE						1	
49		22904155		MAIN SHAFT THRU-ST COLLAR ASM.						1	
50	R	22904106	22904155	MAIN SHAFT THRUST COLLAR				*		1	1.00
51		SS8660610TP		SCREW 1/4-40 L=6				*		2	
52		B1605201000		METAL WASHER						1	
53		B1601201000A		FEED SHAFT						1	
54		21009709		FEED ARM, REAR						1	
55		RC0150001KP		RETAINING RING 13.8						1	
56	R	SS8150710SP	SS8150710TP	SCREW 15/64-28 L=7						2	1.00
57		SS6151920SP		SCREW 15/64-28 L=19.0						1	

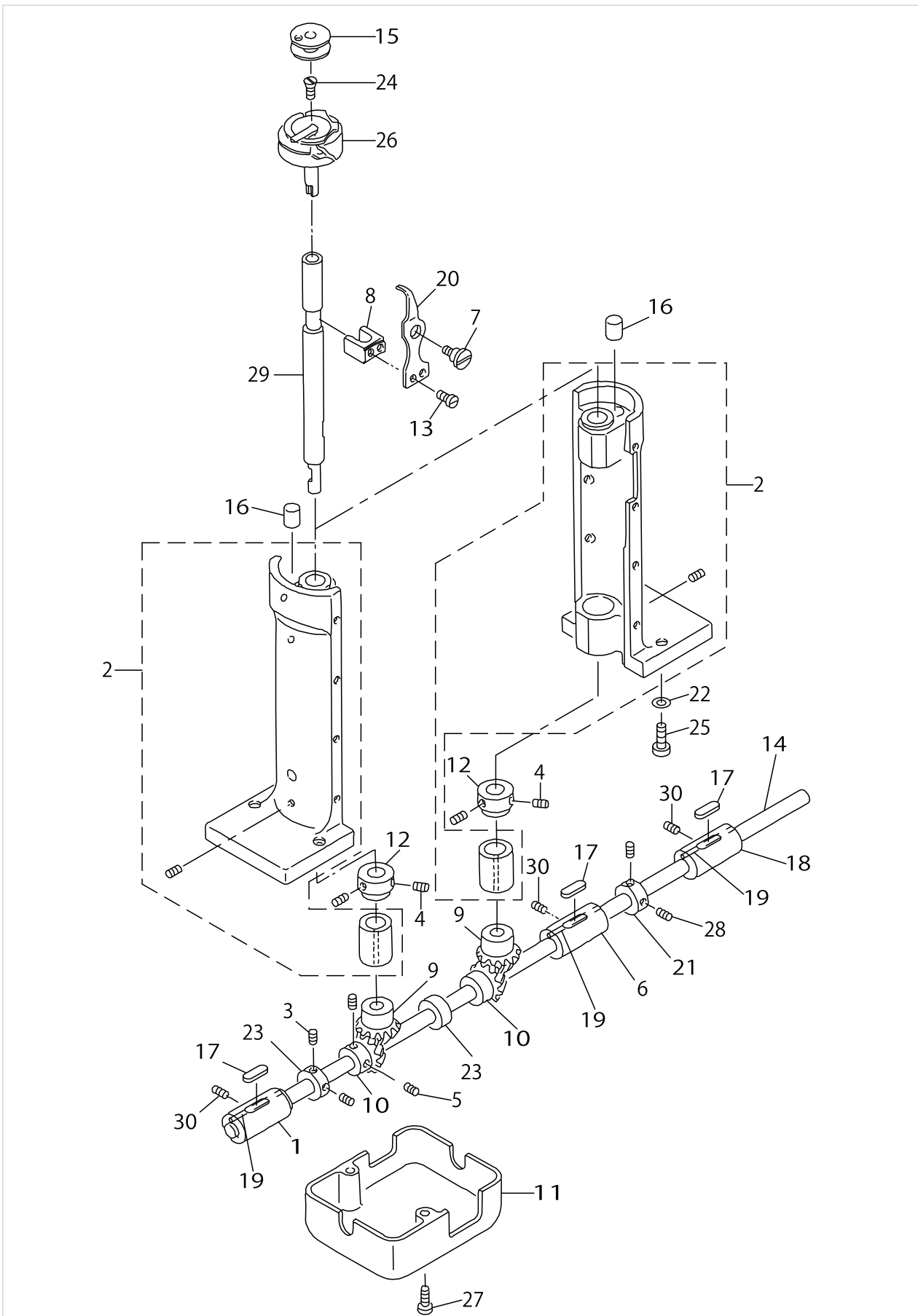
FEED MECHANISM COMPONENTS (2)



FEED MECHANISM COMPONENTS (2)

No.	Supply Code	Parts No.	Replacement	Parts name	Remarks	Choice	Step	Level	Cons	Qty	Rep. QTY
1		21027057		FEED ROD ASM.						1	
2		21027008		FEED ROD				*		1	
3		21027107		ROD COVER				*		1	
4		SS6121610SP		SCREW 3/16-28 L=15.5				*		2	
5		B1621241H00		REVERSE FEED CONTROL LEVER SHAFT						1	
6		B1619241H00		FEED CONNECTING LINK						1	
7		B1622241H00A		HINGE PIN						1	
8		B1627241H00		CONTROL LEVER CRANK						1	
9		B1617241H00		HINGE SCREW, A						1	
10		B1618241H00		HINGE SCREW, B						1	
11		B1614241H00		PITMAN						1	
12		B1650241H00		FEED REGULATOR SUPPORTING BASE						1	
13		21026208		FEED REGULATOR						1	
14		21026307		SPRING HOLDER						1	
15		21026406		CONNECTING ROD						1	
16		21026505		CHANGING ARM						1	
17		21026604		CHANGING ARM SHAFT						1	
18		21026703		BUSHING						2	
19		21026802		HINGE SCREW A						1	
20		21026901		HINGE SCREW						1	
21		B1646241H00		TENSION SPRING						1	
22		40138764		STITCH LENGTH REGULATING SCREW						1	
23		B2115271000		NEEDLE THROW LINK						1	
24		B1623555000A		FEED REGULATOR DIAL						1	
25	D	B1624586000		REVERSE FEED CONTROL LEVER						1	
26		TA0290301M0		RUBBER PLUG						1	
27		RE0800000K0		E-SHAPED SNAP RING (8MM)						2	
28		NS6680320SP		NUT 9/32-28						1	
29		NS6680410SP		NUT 9/32-28						1	
30		SD0640231SP		HINGE SCREW D= 6.35 H= 2.3						2	
31		CQ252000000		OIL WICK						.05	
32		SS6121050SP		SCREW 3/16-28 L=9.5						1	
33		SS6121210SP		SCREW 3/16-28 L=12						1	
34		SS6151220SP		SCREW 15/64-28 L=11.5						1	
35		SS7151210SP		SCREW 15/64-28 L=12						4	
36		SS7151330SP		SCREW 15/64-28 L=13.0						1	
37		SS7620750SP		SCREW 3/16-32 L=6.5						2	
38		SS8151230SP		SCREW 15/64-28 L=12						1	
39		SS8660810TP		SCREW 1/4-40 L=8						1	
40		SS8661040TP		SCREW 1/4-40 L=10						1	
41	R	SS8151150SP	SS8151150TP	SCREW 15/64-28 L=10.5						2	1.00
42		B1702012000		OIL FELT						1	
43		NS6680410SP		NUT 9/32-28						1	
44		SD1020962SP		HINGE SCREW D=10.20 H= 9.6						1	

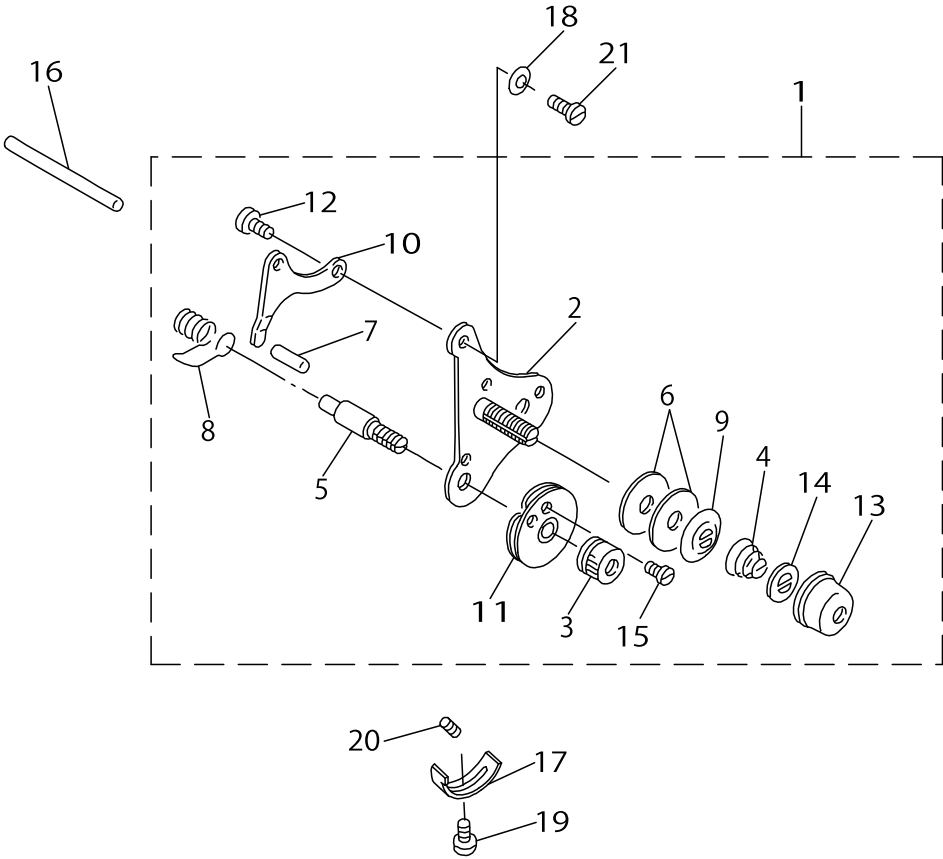
HOOK DRIVING SHAFT & HOOK COMPONENTS



HOOK DRIVING SHAFT & HOOK COMPONENTS

No.	Supply Code	Parts No.	Replacement	Parts name	Remarks	Choice	Step	Level	Cons	Qty	Rep. QTY
1		21009907		DRIVING SHAFT BUSHING, FRONT						1	
2		40022417		HOOK SADDLE ASM.	1 PIECE U- SE FOR PLN-985					2	
3		SS8090410SP		SCREW 9/64-40 L=3.5						4	
4		SS8660530TP		SCREW 1/4-40 L= 4.5						4	
5		SS8660610TP		SCREW 1/4-40 L=6	4 PIECES USE FOR PLN-985					8	
6		21010004		DRIVING SHAFT BUSHING, REAR						1	
7		21010608		HINGE SCREW	1 PIECE U- SE FOR PLN-985					2	
8		21010707		GUIDE FORK	1 PIECE U- SE FOR PLN-985					2	
9		21010806		HOOK SHAFT GEAR	1 PIECE U- SE FOR PLN-985					2	
10		21010905		HOOK SHAFT GEAR	1 PIECE U- SE FOR PLN-985					2	
11		21011002		GEAR CASE						1	
12		21011101		THRUST COLLAR	1 PIECE U- SE FOR PLN-985					2	
13		21011200		SCREW	1 PIECE U- SE FOR PLN-985					4	
14		21027206		DRIVING SHAFT						1	
15		B9117051000		BOBBIN	1 PIECE U- SE FOR PLN-985					2	
16		21011309		FELT	1 PIECE U- SE FOR PLN-985					2	
17		B1806038000		OIL FELT						3	
18	D	B1804201000		HOOK DRIVING SH- AFT BUSHING, RE						1	
19		CQ202000000		OIL WICK						.07	
20		21010509		GUIDE	1 PIECE U- SE FOR PLN-985					2	
21		CS0791016SH		THRUST HOLDER D=7.94 W=10						1	
22		WS0822010KP		SPRING WASHER 8.2X15X2	2 PIECES USE FOR PLN-985					4	
23		CS0790721TH		THRUST COLLAR D=7.94 W=7	1 PIECE U- SE FOR PLN-985					2	
24		SS1092810SP		SCREW 9/64-40 L=25.4	1 PIECE U- SE FOR PLN-985					2	
25		SS7702610SP		SCREW A	2 PIECES USE FOR PLN-985					4	
26		21010251		ROTATING HOOK ASM.	1 PIECE U- SE FOR PLN-985					2	
27		SS7112420SP		SCREW 11/64-40 L=24						2	
28		SS8110520TP		SCREW 11/64-40 L= 4.5						2	
29		21010301		HOOK SHAFT	1 PIECE U- SE FOR PLN-985					2	
30	R	SS8151150SP	SS8151150TP	SCREW 15/64-28 L=10.5						3	1.00

THREAD TENSION COMPONENTS (PLN-985)

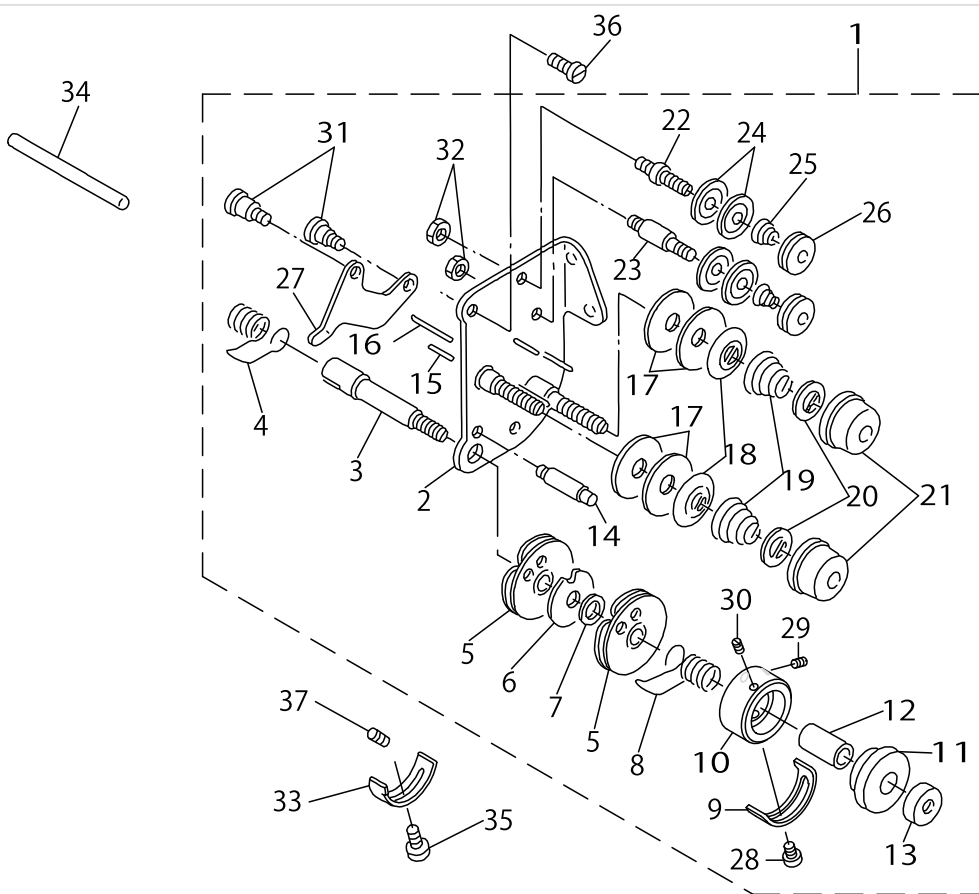


THREAD TENSION COMPONENTS (PLN-985)

No.	Supply Code	Parts No.	Replacement	Parts name	Remarks	Choice	Step	Level	Cons	Qty	Rep. QTY
1		21011663		THREAD TENSION ASM.						1	
2	D	21011655		THREAD TENSION BRACKET				*		1	
3	R	B3125012000	22928808	THREAD TENSION NUT				*		1	1.00
4		B3129012A00		TENSION SPRING				*		1	
5		B3123051000		TAKE-UP SPRING STUD				*		1	
6		B3126051000		TENSION DISC				*		2	
7		B3127051000		TENSION RELEASE PIN, SHORT				*		1	
8		B3128051000		THREAD TAKE-UP SPRING, A				*		1	
9		B3132051000		TENSION DISC HOLDER				*		1	
10	D	B3134051000		TENSION RELEASE LEVER				*		1	
11		B31370510A0		TAKE-UP SPRING GUIDE DISC ASM.				*		1	
12		SD0470281SP		HINGE SCREW D=4.7 H=2.8				*		2	
13		B3116125000		TENSION NUT				*		1	
14		B3120125000		ROTATING STOPPER				*		1	
15		SS4080620TP		SCREW 1/8-44 L=6				*		1	
16		21027305		PRESSER BAR						1	
17		B3138512000		TAKE-UP SPRING A- DJUSTING PLATE						1	
18		B3125155000		DISK SPRING						1	
19	R	SS7090520SP	SS7090520TP	SCREW 9/64-40 L=4.5						1	1.00
20		SS8111251SP		SCREW 11/64-40 L=12.0						1	
21		SD0600271SP		HINGE SCREW D= 6 H= 2.7						1	



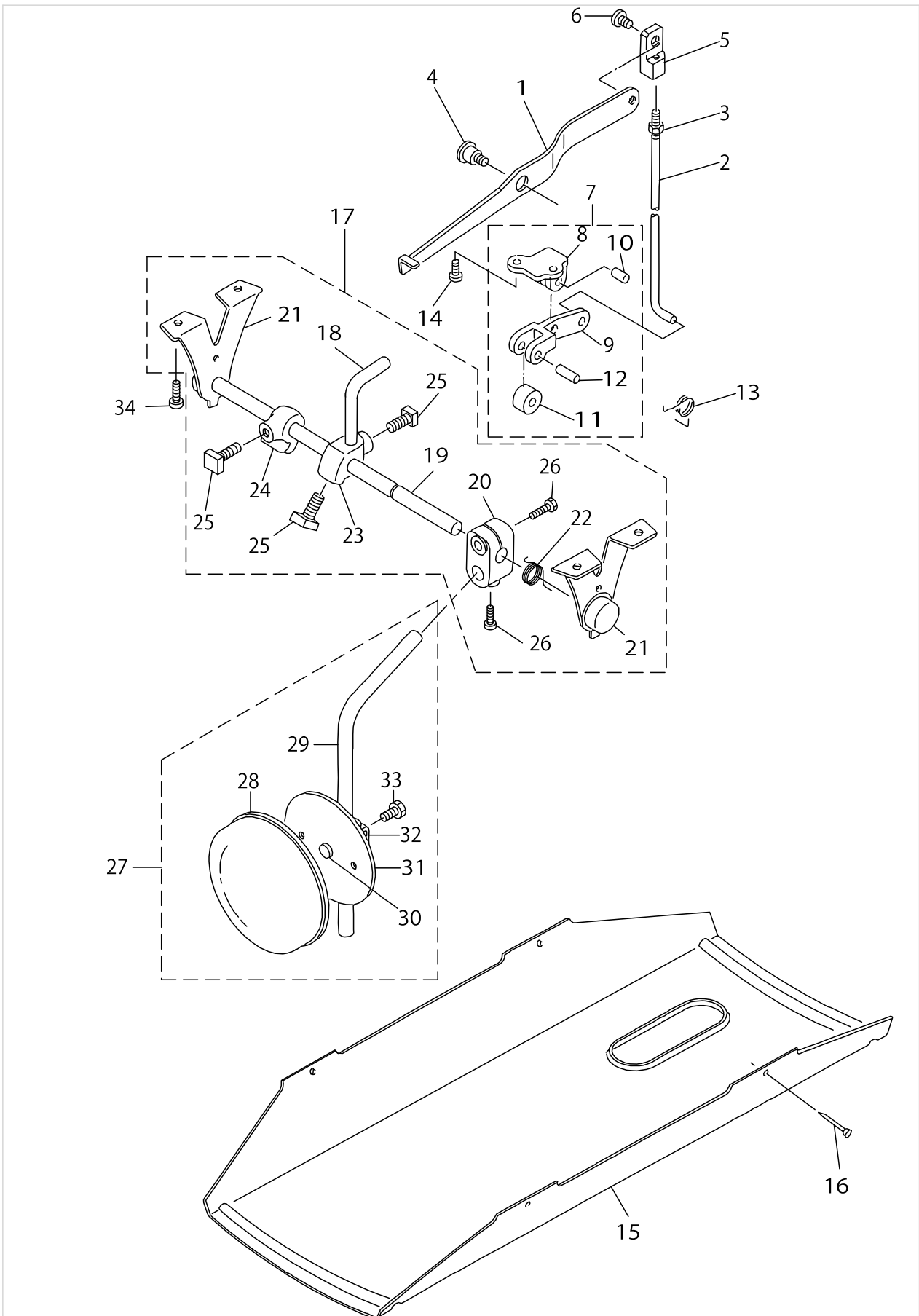
THREAD TENSION COMPONENTS (PLN-986)



THREAD TENSION COMPONENTS (PLN-986)

No.	Supply Code	Parts No.	Replacement	Parts name	Remarks	Choice	Step	Level	Cons	Qty	Rep. QTY
1		21020557		THREAD TENSION ASM.						1	
2		10124055		TENSION POST ASM.				*		1	
3	D	B3123527000		THREAD TAKE-UP SPRING STUD				*		1	
4		B3128051000		THREAD TAKE-UP SPRING, A				*		1	
5		B31375270A0		TAKE-UP SPRING GUIDE ASM.				*		2	
6		B3142527000		TAKE-UP SPRING GUIDE PLATE				*		1	
7		B3139527000		COLLAR				*		1	
8		B3128527000		THREAD TAKE-UP SPRING B				*		1	
9		B3138527000		ADJUSTING PLATE B				*		1	
10		22617609		THREAD TENSION POST				*		1	
11		B3125527000		TAKE-UP SPRING GUIDE				*		1	
12		B3141527000		PRESSER COLLAR				*		1	
13	R	B3125012000	22928808	THREAD TENSION NUT				*		1	1.00
14		B3143527000		TAKE-UP SPRING GUIDE STUD				*		1	
15		B3127051000		TENSION RELEASE PIN, SHORT				*		1	
16		B3127527000		PIN B				*		1	
17		B3126051000		TENSION DISC				*		4	
18		B3132051000		TENSION DISC HOLDER				*		2	
19		B3129012A00		TENSION SPRING				*		2	
20		B3120125000		ROTATING STOPPER				*		2	
21		B3116125000		TENSION NUT				*		2	
22		10124204		THREAD TENSION POST, A				*		1	
23		10124303		THREAD TENSION POST, B				*		1	
24	R	B3214047000	22945802	BOBBIN WINDER TENSION DISC				*		4	1.00
25		D3168555H0B		TENSION SPRING NO.1				*		2	
26		B3216047000		BOBBIN WINDER TENSION NUT				*		2	
27		B3134521000		TENSION RELEASE LEVER				*		1	
28	R	SS7090520SP	SS7090520TP	SCREW 9/64-40 L= 4.5				*		1	1.00
29	R	22618904	SM8030500SP	SET SCREW				*		1	1.00
30	R	22618904	SM8030500SP	SET SCREW				*		1	1.00
31		SD0470281SP		HINGE SCREW D=4.7 H=2.8				*		2	
32		NS6110310SP		NUT 11/64-40				*		2	
33		B3138512000		TAKE-UP SPRING A- DJUSTING PLATE						1	
34		21027305		PRESSER BAR						1	
35	R	SS7090520SP	SS7090520TP	SCREW 9/64-40 L= 4.5						1	1.00
36		SS7110720SP		SCREW 11/64-40 L=7						1	
37		SS8111251SP		SCREW 11/64-40 L=12.0						1	

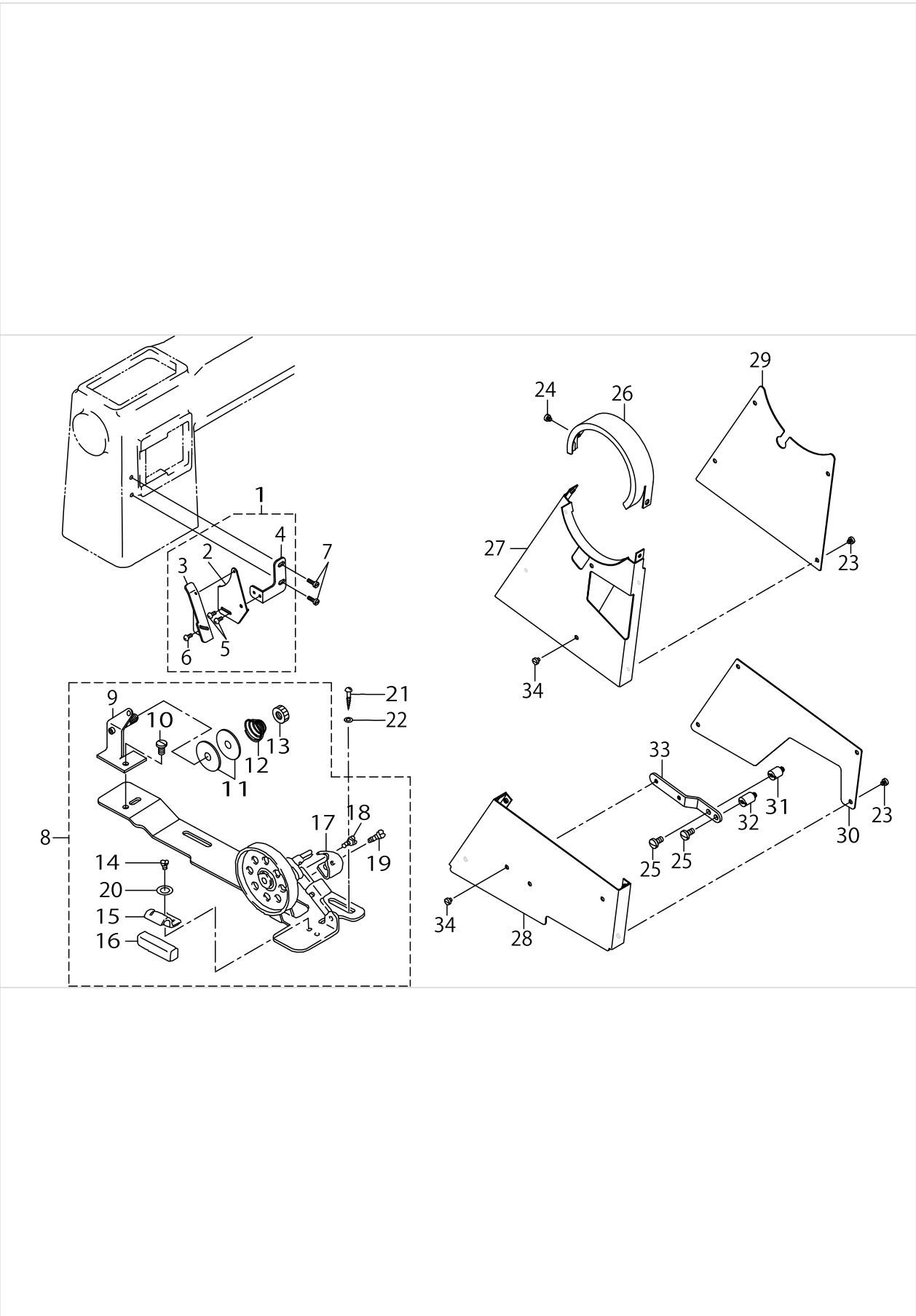
KNEE LIFTER & OIL PAN COMPONENTS



KNEE LIFTER & OIL PAN COMPONENTS

No.	Supply Code	Parts No.	Replacement	Parts name	Remarks	Choice	Step	Level	Cons	Qty	Rep. QTY
1		B3410241H00A		PRESSER BAR LIFTING LEVER						1	
2		21027404		LIFTING BAR						1	
3		NS6620310SP		NUT 3/16-32						1	
4		SD1127321SP		HINGE SCREW D=12.70 H= 3.2						1	
5		21027503		BAR CONNECTION						1	
6		SD0790601SP		HINGE SCREW D=7.94 H=6						1	
7	R	B3402141HA0	B3402141HA0A	BELL CRANK BRACKET ASM.						1	1.00
8	R	B3401141H00	B3402141HA0A	BELL CRANK BRACKET				*		1	1.00
9	R	B3402141H00	B3402141HA0A	BELL CRANK				*		1	1.00
10	R	B3403141H00	B3402141HA0A	PIN				*		1	1.00
11		B3404141H00		ROLLER				*		1	
12	D	B3405141H00		PIN				*		1	
13		B3406141H00		SPRING						1	
14	R	SS7120910SP	SS7120910TP	SCREW 3/16-28 L=9						2	1.00
15		21027602		OIL PAN						1	
16		10539906		SET NAIL						4	
17		B3420141HAA		KNEE LIFTER ASM.						1	
18		B3426141H00A		KNEE LIFTING BENT ARM				*		1	
19		B3420141H0A		MAIN SHAFT				*		1	
20	R	B3433141H0A	22932453	BRACKET				*		1	1.00
21		40032132		SUPPORT				*		2	
22		40130335		KNEE TOP ROTARY SPRING				*		1	
23		B3424141H00		MOUNTING BRACKET				*		1	
24		B3434141H00		BRACKET				*		1	
25	R	B3425141H00	SS9201813CP	MOUNTING BRACKET SET SCREW				*		3	1.00
26		SS9182010SN		SCREW 9/32-20 L=20				*		2	
27		22934251		KNEE PAD PLATE ASM.						1	
28		22934509		KNEE PAD PLATE COVER				*		1	
29		22934608		KNEE PAD UPRIGHT SHAFT				*		1	
30		22934400		KNEE PAD PLATE RUBBER				*		1	
31		22934202		KNEE PAD PLATE				*		1	
32		22934301		KNEE PAD PLATE SUPPORT				*		1	
33		SM9061203SE		SCREW M6 L=12				*		1	
34		SK3483201SE		WOOD SCREW D=4.8 L=32						4	

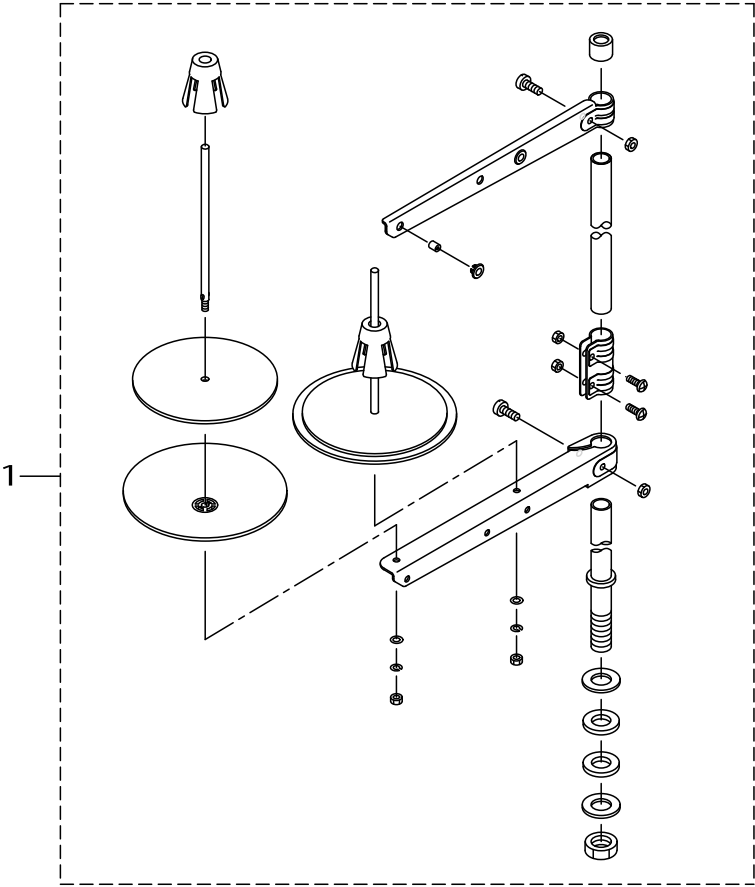
BELT COVER & BOBBIN WINDER COMPONENTS



BELT COVER & BOBBIN WINDER COMPONENTS

No.	Supply Code	Parts No.	Replacement	Parts name	Remarks	Choice	Step	Level	Cons	Qty	Rep. QTY
1		B8230241HA0A		BELT COVER ASM.						1	
2		B8230241H0A		BELT COVER A				*		1	
3		B8230241H0B		BELT COVER B				*		1	
4		B8230241H0C		BELT COVER BRACKET				*		1	
5		SS7090610SP		SCREW 9/64-40 L=6				*		2	
6		SS7090510SP		SCREW 9/64-40 L=4.6				*		1	
7		SS6121220TP		SCREW 3/16-28 L=11.5						2	
8	R	11077567	22927354	BOBBIN WINDER COMPL.						1	1.00
9		11078250		THREAD TENSION BRACKET ASM.				*		1	
10		SS7110840SP		SCREW 11/64-40 L=7.8				*		2	
11	R	B3126012000	22921506	THREAD TENSION DISK				*		1	1.00
12	R	B3129012B00	22929004	THREAD TENSION SPRING				*		1	1.00
13	R	B3125012000	22928808	THREAD TENSION NUT				*		1	1.00
14		SS4110515SP		SCREW 11/64-40 L=5				*		1	
15		11078102		PRESSER PLATE				*		1	
16		B3211555000		RUBBER BRAKE				*		1	
17		11078003		POSITIONING FINGER				*		1	
18		SD0490261SP		HINGE SCREW D=4.9 H=2.6				*		1	
19		SS7081310SP		SCREW 1/8-44 L=12.5				*		1	
20		WP0480856SP		WASHER 4.8X8.4X0.8				*		1	
21	R	SK3482500SC	SK3482501SE	WOOD SCREW D=4.8 L=25						2	1.00
22		WP0501016SC		WASHER 5X10.5X1						2	
23		SS6110480SP		SCREW 11/64-40 L=4.3	FOR PLN-985					8	
24		SS6110480SP		SCREW 11/64-40 L=4.3	FOR PLN-985					2	
25		SS7151210SP		SCREW 15/64-28 L=12	FOR PLN-985					2	
26		21027966		TOP COVER ASM.	FOR PLN-985					1	
27		21003561		BELT COVER UNIT (UPPER) ASM.	FOR PLN-985					1	
28		21003660		BELT COVER UNIT (LOWER) ASM.	FOR PLN-985					1	
29		21004809		BELT COVER LID (UPPER)	FOR PLN-985					1	
30		21004908		BELT COVER LID (LOWER)	FOR PLN-985					1	
31		21028006		BELT COVER STUD C	FOR PLN-985					1	
32		21028105		BELT COVER STUD D	FOR PLN-985					1	
33		21028204		BELT COVER SUPPORT PLATE	FOR PLN-985					1	
34		SS6110480SP		SCREW 11/64-40 L=4.3	FOR PLN-985					5	

THREAD STAND COMPONENTS (PLN-985)

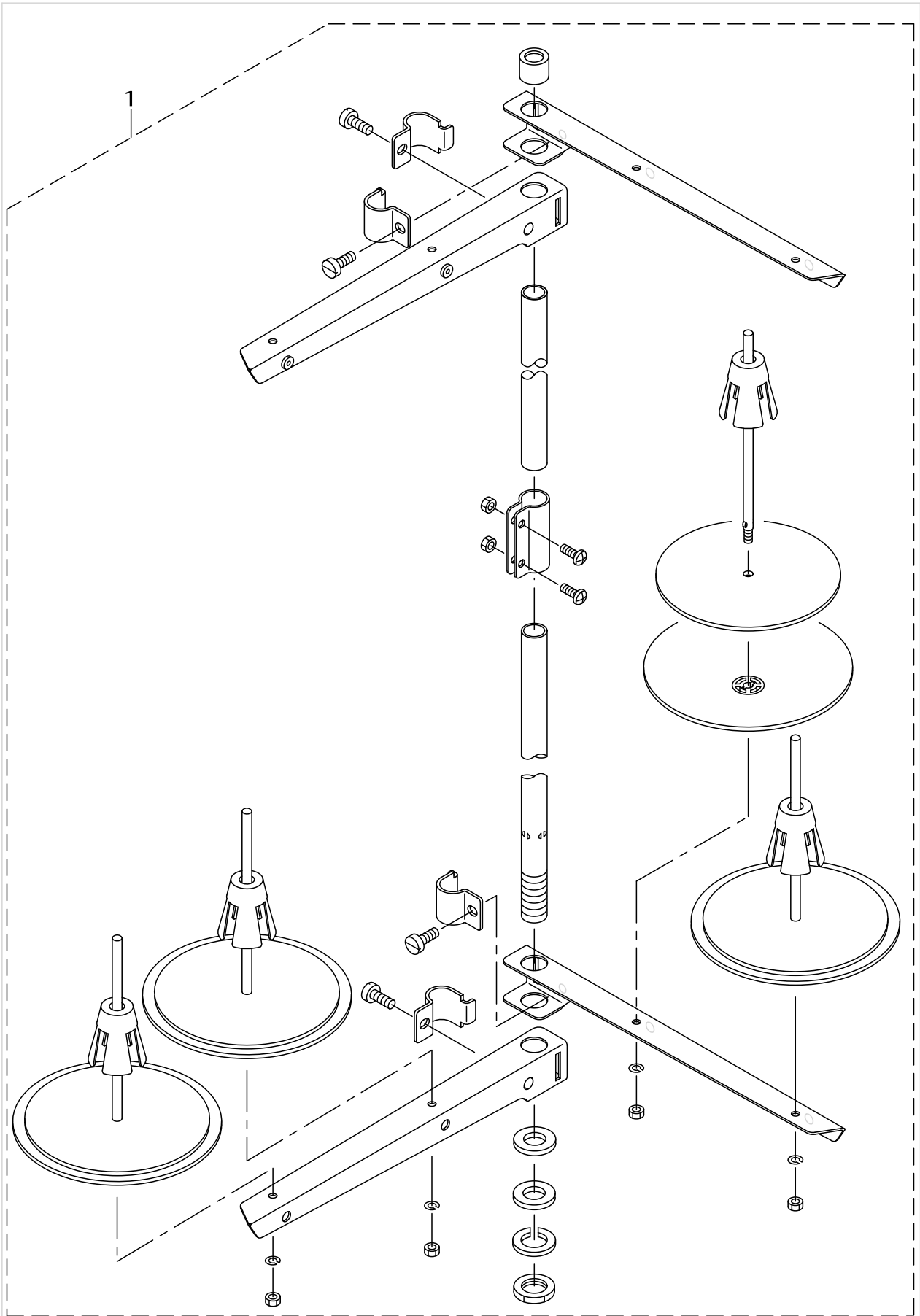


THREAD STAND COMPONENTS (PLN-985)

No.	Supply Code	Parts No.	Replacement	Parts name	Remarks	Choice	Step	Level	Cons	Qty	Rep. QTY
1		40096354		THREAD STAND ASM.						1	



THREAD STAND COMPONENTS (PLN-986)



THREAD STAND COMPONENTS (PLN-986)

No.	Supply Code	Parts No.	Replacement	Parts name	Remarks	Choice	Step	Level	Cons	Qty	Rep. QTY
1		26910158		THREAD STANDING DEVICE ASM.						1	

TABLE COMPONENTS

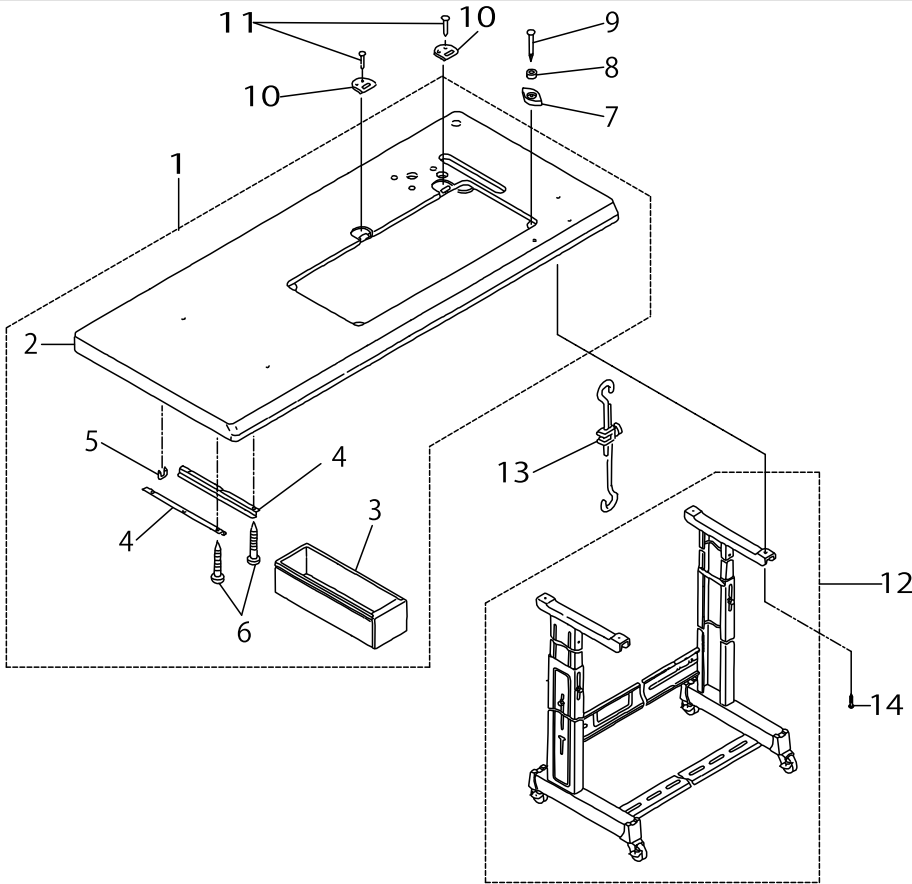
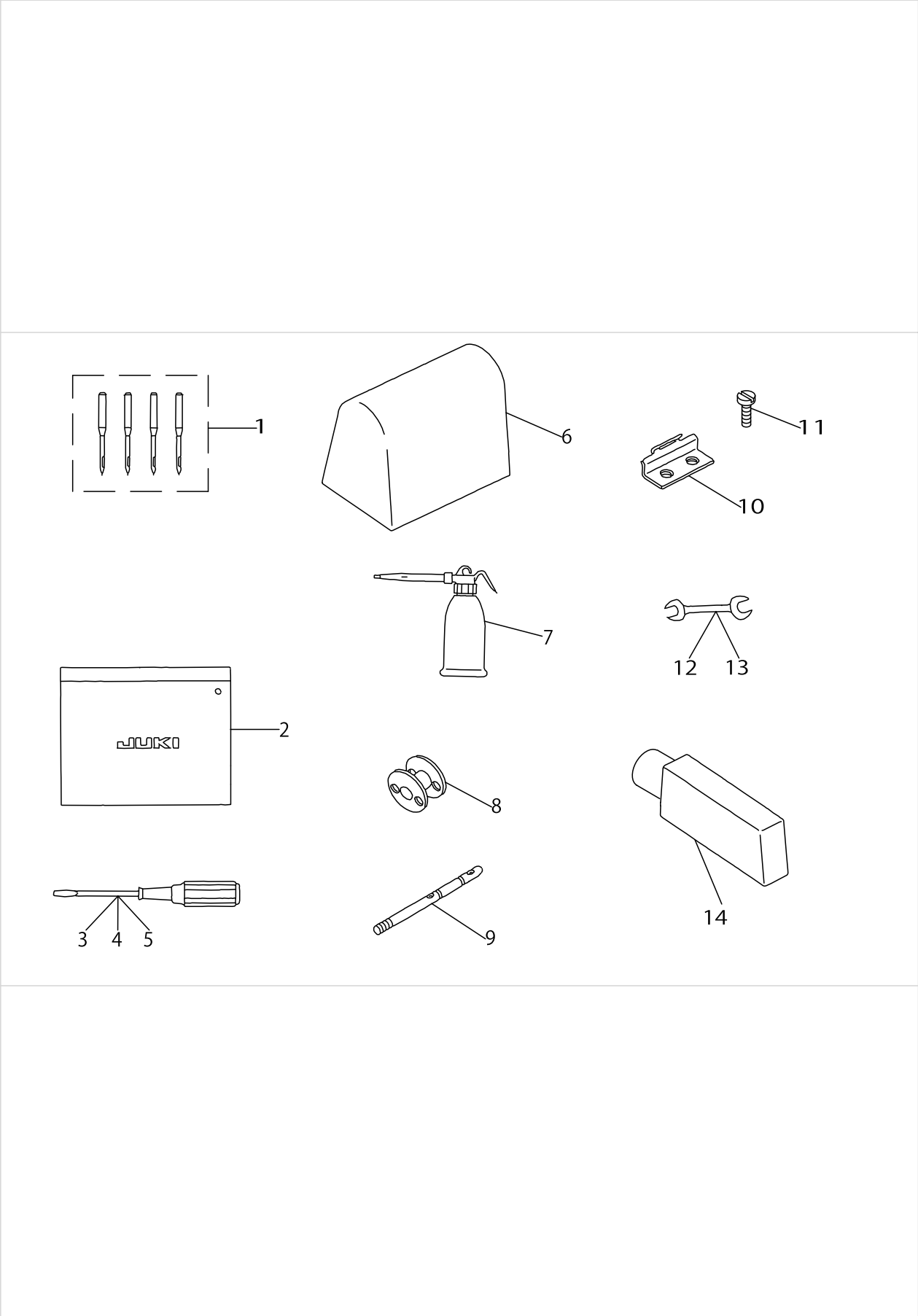


TABLE COMPONENTS

No.	Supply Code	Parts No.	Replacement	Parts name	Remarks	Choice	Step	Level	Cons	Qty	Rep. QTY
1		21025358		TABLE ASM.						1	
2		21025309		TABLE				*		1	
3	R	11849502	11849551	DRAWER				*		1	1.00
4		B8204012000		DRAWER SUPPORT				*		2	
5		D8204555D00		DRAWER STOPPER				*		1	
6		SK3311600SE		WOOD SCREW D=3.1 L=16				*		6	
7		B8209012000		RUBBER CUSHION						4	
8		B8206012000		FELT CUSHION						4	
9		10539906		SET NAIL						4	
10		B8212051000		BED HINGE						2	
11		SK1552500SC		WOOD SCREW D=5.5 L=25						4	
12		17011263		T LEG JUNCTION						1	
13		B71140120A0		MOTOR CONNECTING ROD ASM.						1	
14	R	SK3513200SC	SK3513201SE	WOOD SCREW D=5.1 L=32						4	1.00

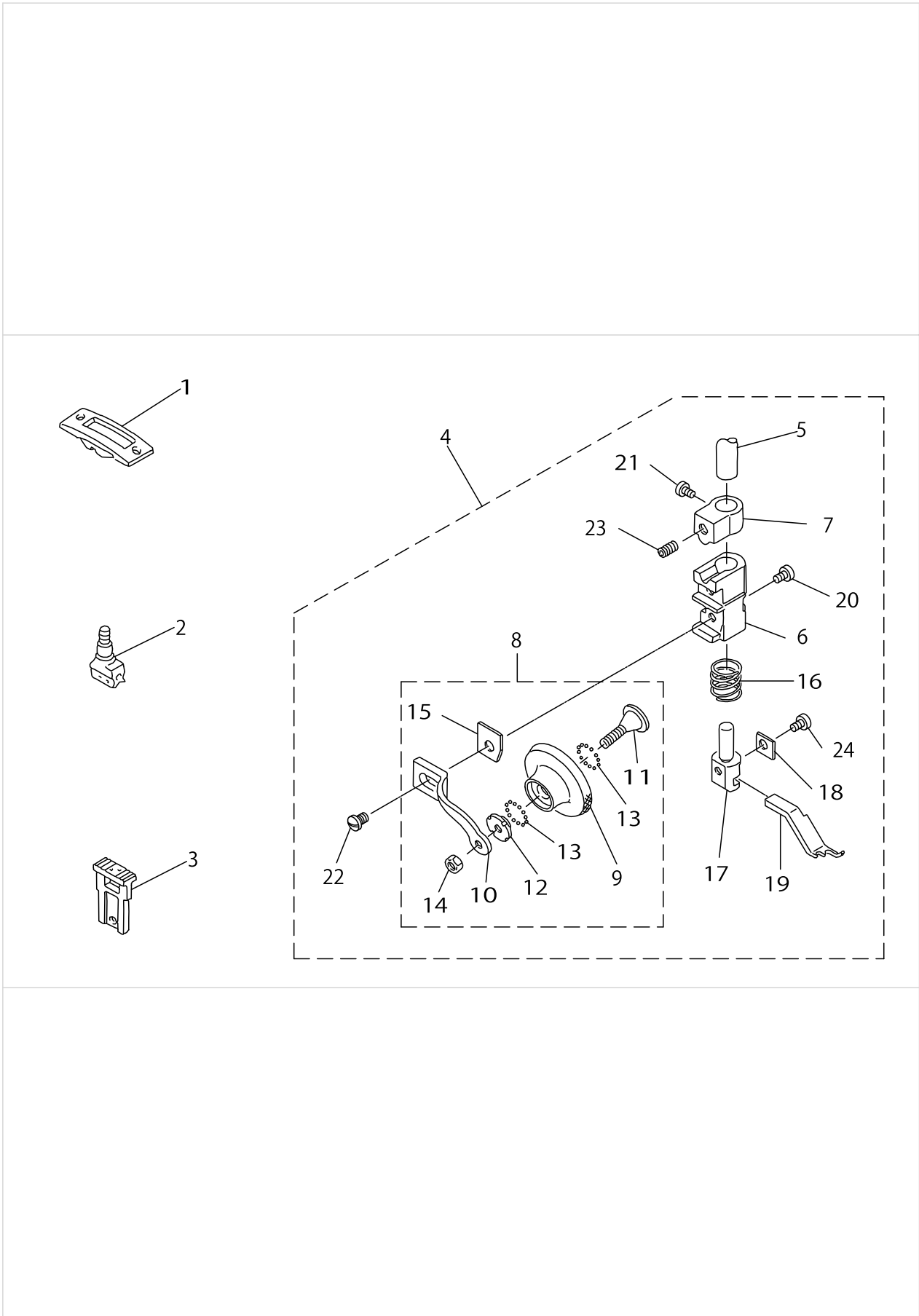
ACCESSORIES PARTS COMPONENTS



ACCESSORIES PARTS COMPONENTS

No.	Supply Code	Parts No.	Replacement	Parts name	Remarks	Choice	Step	Level	Cons	Qty	Rep. QTY
1	D	MDP500B1602		NEEDLE DPX5#16-2	2 PIECES USE FOR CN,UR/MG,DK					1	
2		22932800		ACCESSORIE BAG						1	
3		22933006		SCREW DRIVER,LARGE						1	
4		22933105		SCREW DRIVER,MIDDLE						1	
5		22933204		SCREW DRIVER,SMALL						1	
6		40048536		HEAD_COVER						1	
7		B9121141HA0		OILER ASM.						1	
8		B9117051000		BOBBIN	3 PIECES USE FOR PLN-985					4	
9		B1114051000		NEEDLE THREAD GUIDE PIN						1	
10		B8213051000		BED HINGE CONNECTION						2	
11	D	SS1680910SP		SCREW						4	
12	R	B9112012000	26034702	WRENCH (11X14)						1	1.00
13		B9113012000		WRENCH (9X10)						1	
14		10528800		FRAME SUPPORT BAR						1	

GAUGE PARTS COMPONENTS



GAUGE PARTS COMPONENTS

No.	Supply Code	Parts No.	Replacement	Parts name	Remarks	Choice	Step	Level	Cons	Qty	Rep. QTY
1		21032206		NEEDLE PLATE 3/32	OPTION F-OR PLN-986					1	
2		21017504		NEEDLE CLAMP 2.4 3/32	OPTION F-OR PLN-986					1	
3	D	21031208		FEEDER 3/32	OPTION F-OR PLN-986					1	
4		21030069		PRESSER BAR ASM. 3/32	OPTION F-OR PLN-986					1	
5	R	21003207	21003256	PRESSER BAR				*		1	1.00
6	D	21004205		PRESSER BASE				*		1	
7	D	21004304		STOPPER				*		1	
8		21005459		ROLLER PRESSER ASM.				*		1	
9		21005400		ROLLER				*		1	
10		21005509		ROLLER HOLDER				*		1	
11		21005608		ROLLER STOPPER				*		1	
12		21005707		BALL SEAT NUT				*		1	
13		21005806		BEARING BALL				*		24	
14	R	21005905	NS6120310SP	ROLLER STOPPER NUT				*		1	1.00
15		21020003		WASHER				*		1	
16		21004403		BASE SPRING				*		1	
17		21020102		LOWER NEEDLE GUIDE SUPPORT				*		1	
18		21020201		GUIDE SUPPORT PLATE				*		1	
19	D	21033105		NEEDLE GUIDE 3/32				*		1	
20		SS6080360SP		SCREW				*		2	
21		21004601		SCREW				*		1	
22		21020706		SCREW				*		1	
23	R	SS8150710SP	SS8150710TP	SCREW 15/64-28 L=7				*		1	1.00
24		21020607		SCREW				*		1	



TABLE OF GAUGE FOR PLN-986



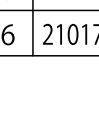

品名		1		2		3		4		5	
		Gauge set		Throat plate		Needle clamp		Feed dog		Needle guide	
		ゲージセット		針板		針留		送り歯		針案内	
Needle gauge size 針幅											
ゲージ記号											
inch	mm	Ref. No.	Part.No.	Ref. No.	Part.No.	Ref. No.	Part.No.	Ref. No.	Part.No.	Ref. No.	Part.No.
1/16	1.6	1	21032156	3	21032107	5	21017405	7	21031109	9	21033006
3/32	2.4	2	21032255	4	21032206	6	21017504	8	21031208	10	21033105

TABLE OF GAUGE FOR PLN-986

No.	Supply Code	Parts No.	Replacement	Parts name	Remarks	Choice	Step	Level	Cons	Qty	Rep. QTY
1		21032156		GAUGE SET 1.6MM						1	
2		21032255		GAUGE SET 2.4MM						1	
3		21032107		THROAT PLATE 1/16						1	
4		21032206		NEEDLE PLATE 3/32						1	
5		21017405		NEEDLE STOPPER 1.6 1/16						1	
6		21017504		NEEDLE CLAMP 2.4 3/32						1	
7	D	21031109		FEED DOG 1/16						1	
8	D	21031208		FEEDER 3/32						1	
9		21033006		NEEDLE GUIDE 1/16						1	
10	D	21033105		NEEDLE GUIDE 3/32						1	

LIST FOR INFORMATION OF CHANGE

As to the place changed, refer to the corresponding Rev.No.  
 When previous parts(Obsoleted part)and new parts(Added parts)are  
 not interchangeable with each other:  
 In this case,even obsoleted parts(D.)can be ordered with the  
 obsoleted part number,so select the parts with changed dates and  
 place your orders.

変更箇所は、該当Rev.No.版をご参照ください。  
 部品の互換性がない変更の場合は、削除された品番でも、ご注文できます。

19592302  
 No.0529-06 Rev.No.

\*A:Added parts追加部品/D:Obsoleted parts削除部品/E:Erratum訂正

* Rev. No.	Page 頁	Ref. No.	Parts No. 品番	* Rev. No.	Page 頁	Ref. No.	Parts No. 品番
D 05	2	28	SS-2090710-SP	A 06	2	28	SS-2090710-TP
D 05	2	29	SS-2090710-SP	A 06	2	29	SS-2090710-TP
				A 06	2	45	CM-3012000-01
D 05	4	6	B1209-241-H00	A 06	4	6	B1208-141-H00
D 05	4	13	TA-0500000-R0				
D 05	8	53	B1511-555-000	A 06	8	53	229-07604
D 05	10	12	118-47308	A 06	10	12	B1602-141-H00
D 05	10	17	SS-7121410-SP	A 06	10	17	SS-7121410-TP
D 05	12	22	B1634-141-H00	A 06	12	22	401-38764
D 05	14	3	210-10103				
D 05	14	4	SS-8111010-TP				
D 05	14	5	210-10400				
D 05	14	6	CQ-2020000-00				
D 05	15	15	SS-4080610-SP	A 06	15	15	SS-4080620-TP
D 05	18	22	B3435-141-H00	A 06	18	22	401-30335
				A 06	19	23	SS-6110480-SP
				A 06	19	24	SS-6110480-SP
				A 06	19	25	SS-7151210-SP
				A 06	19	26	401-27966
				A 06	19	27	210-03561
				A 06	19	28	210-03660
				A 06	19	29	210-04809
				A 06	19	30	210-04908
				A 06	19	31	401-28006
				A 06	19	32	401-28105
				A 06	19	33	401-28204
				A 06	19	34	SS-6110480-SP
D 05	20	1	229-30358	D 06	20	1	400-96354
D 05	20	-	No.2~No.20				
D 05	22	-	No.2~No.20				
D 05	24	1	MDP-500B1604	D 06	24	1	MDP-500B1602
D 05	24	2	B9101-552-000	D 06	24	2	229-32800
D 05	24	4	B9110-012-000	D 06	24	4	229-33105
D 05	24	5	B9111-012-000	D 06	24	5	229-33204
D 05	24	6	105-29808	D 06	24	6	400-48536
D 05	25	16	105-06509	D 06	25	16	210-04403

## HOW TO MAKE USE OF THIS PARTS LIST

### 1.Explanation of codes

1)"\*"mark.....means this part is changed from the previous parts book.

As to the details of the change, refer to the "List for information of change".

2)"#01".....refer to "Note" explanation at bottom of page.

### 2.Codes on the "Qty" column

- Each numeral indicates the number of parts required.
- "0.1" and "2.5" indicate the length (in meters) of the respective parts.

3.Parentheses mean that the corresponding part is a subpart that constructs an assembly part.

4.Dotted lines on the Figures indicate assembly parts.

### 1."注記"欄の記号説明

1) "\*"印.....前回のパーツブックに比較して今回変更された部品を意味します。

変更内容は、"変更情報リスト"を参照してください。

2) "#01".....ページ下の"注記"の説明を参照してください。

2.数量欄の数字は、個数を表し、0.1、2.5等の数値は、長さ（単位メートル）を表します。

3.数量欄の（ ）は、組部品を構成している子部品であることを意味します。

4.イラストページの-----枠は、組構成であることを意味します。

NUMERICAL INDEX OF PARTS

PART NO	PAGE	REF NO.	PART NO	PAGE	REF NO.	PART NO	PAGE	REF NO.
10124055	24	2	21005905	10	30	21020201	10	34
10124204	24	22	21005905	38	14	21020201	38	18
10124303	24	23	21006002	10	45	21020409	14	29
10528800	36	14	21006101	10	44	21020557	24	1
10539906	26	16	21006408	10	41	21020607	10	40
10539906	34	9	21006507	10	42	21020607	38	24
11077567	28	8	21006606	14	6	21020706	10	38
11078003	28	17	21006705	14	7	21020706	38	22
11078102	28	15	21006804	14	8	21023007	2	8
11078250	28	9	21006903	14	24	21024302	2	11
11849502	34	3	21007109	14	26	21024500	14	33
17011263	34	12	21008305	14	9	21025309	34	2
21001508	2	3	21009006	14	28	21025358	34	1
21001607	2	4	21009105	14	30	21025655	2	12
21001706	2	5	21009204	14	31	21025804	8	9
21002704	6	4	21009303	14	32	21025952	10	1
21002803	6	5	21009600	14	2	21026000	10	43
21003108	8	10	21009659	14	1	21026109	14	10
21003207	10	21	21009709	16	54	21026208	18	13
21003207	38	5	21009907	20	1	21026307	18	14
21003561	28	27	21010004	20	6	21026406	18	15
21003660	28	28	21010251	20	26	21026505	18	16
21004205	10	22	21010301	20	29	21026604	18	17
21004205	38	6	21010509	20	20	21026703	18	18
21004304	10	23	21010608	20	7	21026802	18	19
21004304	38	7	21010707	20	8	21026901	18	20
21004403	10	32	21010806	20	9	21027008	18	2
21004403	38	16	21010905	20	10	21027057	18	1
21004502	10	17	21011002	20	11	21027107	18	3
21004601	10	37	21011101	20	12	21027206	20	14
21004601	38	21	21011200	20	13	21027305	22	16
21004809	28	29	21011309	20	16	21027305	24	34
21004908	28	30	21011655	22	2	21027404	26	2
21005400	10	25	21011663	22	1	21027503	26	5
21005400	38	9	21017009	2	6	21027602	26	15
21005459	10	24	21017108	2	7	21027966	28	26
21005459	38	8	21017207	2	10	21028006	28	31
21005509	10	26	21017405	8	31	21028105	28	32
21005509	38	10	21017405	40	5	21028204	28	33
21005608	10	27	21017504	38	2	21030051	10	20
21005608	38	11	21017504	40	6	21030069	38	4
21005707	10	28	21020003	10	31	21030903	8	6
21005707	38	12	21020003	38	15	21031000	4	21
21005806	10	29	21020102	10	33	21031109	14	34
21005806	38	13	21020102	38	17	21031109	40	7

## NUMERICAL INDEX OF PARTS

PART NO	PAGE	REF NO.	PART NO	PAGE	REF NO.	PART NO	PAGE	REF NO.
21031208	38	3	B1140051000	2	17	B1513141H00	12	47
21031208	40	8	B1147555000	2	19	B1601201000A	16	53
21032107	2	9	B1150241H00	2	1	B1602141H00	14	12
21032107	40	3	B1156115000	2	18	B1604141H00	14	47
21032156	40	1	B1158528000	2	24	B1604141H00	16	47
21032206	38	1	B1201241HA0	4	1	B1605201000	16	52
21032206	40	4	B1202241H00	4	7	B1611155000A	14	13
21032255	40	2	B1203051000	4	10	B1614241H00	18	11
21033006	10	35	B1203241H00	4	2	B1617241H00	18	9
21033006	40	9	B1204241H00	4	3	B1618241H00	18	10
21033105	38	19	B1206051000	4	11	B1619241H00	18	6
21033105	40	10	B1208019000	8	29	B1621241H00	18	5
22617609	24	10	B1208141H00	4	6	B1622241H00A	18	7
22618904	24	30	B1210051000	4	12	B1623555000A	18	24
22901805	2	44	B1211141H00	4	4	B1624586000	18	25
22904106	16	50	B1211226000	4	14	B1627241H00	18	8
22904155	16	49	B1212012000	4	8	B1646241H00	18	21
22907604	12	53	B1213012000	4	9	B1650241H00	18	12
22912109	2	20	B1227141H0AA	4	5	B1651141H00	16	48
22932800	36	2	B1302241H00	6	1	B1702012000	18	42
22933006	36	3	B1303271000	6	2	B1705155000	14	3
22933105	36	4	B1305012000	6	6	B1706155000	14	4
22933204	36	5	B13052710B0	6	3	B1707155000	14	5
22934202	26	31	B1306155000	6	8	B1804201000	20	18
22934251	26	27	B1307155000	6	9	B1806038000	20	17
22934301	26	32	B13072710A0	6	7	B1905245000	4	20
22934400	26	30	B1308155000	6	10	B1906051000	4	22
22934509	26	28	B1401246000	8	5	B1906051000	8	30
22934608	26	29	B1408051000	8	12	B1907051000	4	23
26910158	32	1	B1411051000	8	13	B2115271000	18	23
40021374	8	8	B1414232000	8	15	B3116125000	22	13
40022417	20	2	B1417771000	8	16	B3116125000	24	21
40032132	26	21	B1418141H00	8	7	B3120125000	22	14
40048536	36	6	B1423051000	8	14	B3120125000	24	20
40096354	30	1	B1424158000	8	17	B3123051000	22	5
40130335	26	22	B1428563000	8	2	B3123527000	24	3
40138764	18	22	B1429241H00	8	4	B3125012000	22	3
B1103051000	2	15	B1429241HB0	8	1	B3125012000	24	13
B1114051000	36	9	B1431241H00	8	21	B3125012000	28	13
B1118241H00	2	2	B146105300A	12	49	B3125155000	22	18
B1129521000	2	16	B146105300B	12	50	B3125527000	24	11
B1130051000	2	21	B1462053000	12	51	B3126012000	28	11
B1130528000	2	22	B1510141H00	10	46	B3126051000	22	6
B1131512000	2	25	B1510155000	12	52	B3126051000	24	17
B1131528000	2	23	B1512141H00	12	48	B3127051000	22	7

NUMERICAL INDEX OF PARTS

PART NO	PAGE	REF NO.	PART NO	PAGE	REF NO.	PART NO	PAGE	REF NO.
B3127051000	24	15	B8212051000	34	10	SD0470281SP	24	31
B3127527000	24	16	B8213051000	36	10	SD0490261SP	28	18
B3128051000	22	8	B8217241H00	2	36	SD0600271SP	22	21
B3128051000	24	4	B8218241H00	2	37	SD0640231SP	18	30
B3128527000	24	8	B8230241H0A	28	2	SD0640372SH	14	27
B3129012A00	22	4	B8230241H0B	28	3	SD0640851SP	14	25
B3129012A00	24	19	B8230241H0C	28	4	SD0790601SP	26	6
B3129012B00	28	12	B8230241HA0A	28	1	SD0800481SP	12	55
B3132051000	22	9	B9112012000	36	12	SD1020962SP	18	44
B3132051000	24	18	B9113012000	36	13	SD1127321SP	26	4
B3134051000	22	10	B9117051000	20	15	SK1552500SC	34	11
B3134521000	24	27	B9117051000	36	8	SK3311600SE	34	6
B31370510A0	22	11	B9121141HA0	36	7	SK3482500SC	28	21
B31375270A0	24	5	CM301200001	2	45	SK3483201SE	26	34
B3138512000	22	17	CQ202000000	2	39	SK3513200SC	34	14
B3138512000	24	33	CQ202000000	14	16	SM6031202TP	6	15
B3138527000	24	9	CQ202000000	20	19	SM6051410SC	6	12
B3139527000	24	7	CQ252000000	4	25	SM9061203SE	26	33
B3141527000	24	12	CQ252000000	6	13	SS1092810SP	20	24
B3142527000	24	6	CQ252000000	8	18	SS1680910SP	36	11
B3143527000	24	14	CQ252000000	18	31	SS2090520SL	2	27
B3211555000	28	16	CQ505000000	4	17	SS2090710TP	2	29
B3214047000	24	24	CS0790721TH	20	23	SS2090840SP	2	26
B3216047000	24	26	CS0791016SH	6	14	SS2110920TP	14	42
B3401141H00	26	8	CS0791016SH	20	21	SS3090520SP	2	30
B3402141H00	26	9	CS1111019SH	14	15	SS4080620TP	22	15
B3402141HA0	26	7	CS1271012SH	4	15	SS4090610SP	2	43
B3403141H00	26	10	D3168555H0B	24	25	SS4110515SP	28	14
B3404141H00	26	11	D8204555D00	34	5	SS6080360SP	8	23
B3405141H00	26	12	MDP500B1600	8	11	SS6080360SP	10	36
B3406141H00	26	13	MDP500B1602	36	1	SS6080360SP	38	20
B3410241H00A	26	1	NS6110310SP	24	32	SS6110480SP	28	34
B3420141H0A	26	19	NS6110350SP	14	37	SS6111210SP	14	18
B3420141HAA	26	17	NS6110530SP	12	54	SS6121050SP	18	32
B3424141H00	26	23	NS6620310SN	14	35	SS6121210SP	14	19
B3425141H00	26	25	NS6620310SP	26	3	SS6121210SP	18	33
B3426141H00A	26	18	NS6660430SP	14	36	SS6121220TP	28	7
B3433141H0A	26	20	NS6680320SP	18	28	SS6121610SP	18	4
B3434141H00	26	24	NS6680410SP	18	43	SS6151220SP	18	34
B3502115000	2	38	PT0301600S0	8	3	SS6151920SP	16	57
B3517009000	2	13	RC0150001KP	16	55	SS7080510SP	2	40
B71140120A0	34	13	RE0500000K0	14	14	SS7080510SP	8	22
B8204012000	34	4	RE0700000K0	8	20	SS7081310SP	28	19
B8206012000	34	8	RE0800000K0	18	27	SS7090510SP	28	6
B8209012000	34	7	SD0470281SP	22	12	SS7090520SP	22	19

NUMERICAL INDEX OF PARTS

PART NO	PAGE	REF NO.	PART NO	PAGE	REF NO.
SS7090520SP	24	35	SS8151550SP	4	31
SS7090610SP	2	34	SS8151550SP	6	17
SS7090610SP	28	5	SS8151780SP	4	32
SS7090910SP	8	24	SS8620610TP	14	22
SS7110510SP	14	43	SS8660530TP	14	23
SS7110710SP	2	42	SS8660530TP	20	4
SS7110710SP	14	44	SS8660610TP	4	33
SS7110720SP	14	20	SS8660610TP	6	18
SS7110720SP	24	36	SS8660610TP	16	51
SS7110840SP	28	10	SS8660610TP	20	5
SS7111120SP	14	45	SS8660810TP	6	19
SS7111310SP	12	56	SS8660810TP	16	46
SS7111810SP	2	41	SS8660810TP	18	39
SS7112420SP	20	27	SS8661040TP	18	40
SS7120910SP	2	33	SS8680540SP	4	34
SS7120910SP	26	14	SS8680730SP	4	35
SS7121410TP	14	17	SS8681650TP	4	13
SS7150740SP	2	35	SS9111010SP	8	27
SS7151210SP	8	25	SS9182010SN	26	26
SS7151210SP	18	35	TA0290301M0	18	26
SS7151210SP	28	25	WP0480856SP	8	19
SS7151330SP	18	36	WP0480856SP	28	20
SS7161640SP	14	39	WP0501016SC	28	22
SS7620750SP	18	37	WS0822010KP	14	38
SS7681750TP	4	27	WS0822010KP	20	22
SS7701010SP	4	28			
SS7702610SP	14	41			
SS7702610SP	20	25			
SS8090410SP	20	3			
SS8110510SP	8	28			
SS8110520TP	6	16			
SS8110520TP	20	28			
SS8110750SP	12	57			
SS8111251SP	22	20			
SS8111251SP	24	37			
SS8150710SP	4	29			
SS8150710SP	10	39			
SS8150710SP	16	56			
SS8150710SP	38	23			
SS8150750SP	4	26			
SS8151150SP	8	26			
SS8151150SP	14	21			
SS8151150SP	18	41			
SS8151150SP	20	30			
SS8151230SP	18	38			