

MODEL : T042

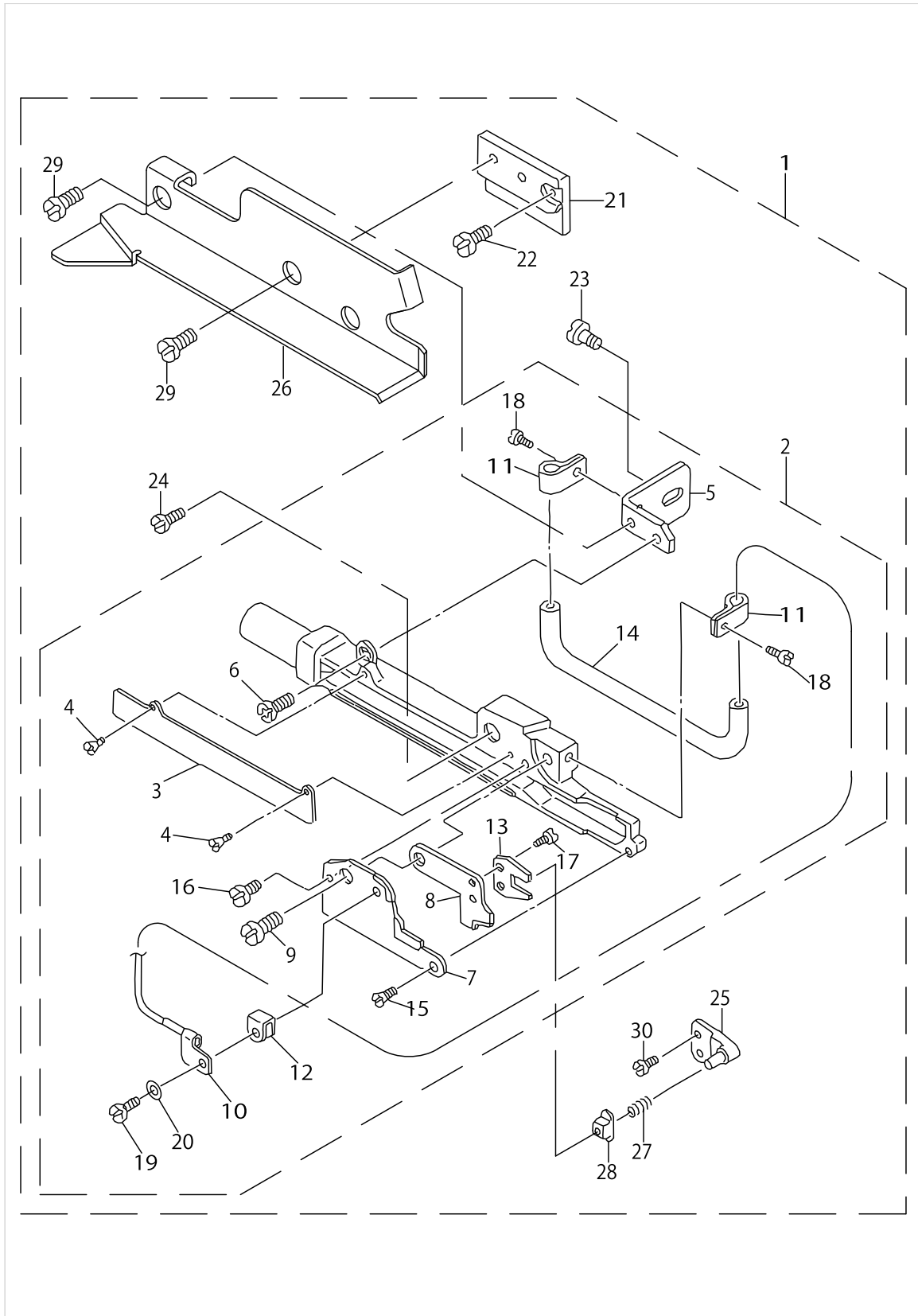
List No : 0861-00

PARTS LIST

Published:05/12/2017

CONTENTS

T042.....	1
HOW TO MAKE USE OF THIS PARTS LIST	3



T042

No.	Supply Code	Parts No.	Replacement	Parts name	Remarks	Choice	Step	Level	Cons	Qty	Rep. QTY
1	R	MAT042000A0	40045967	PNEUMATIC SIDE CUTTER ASM.						1	1.00
2		MAT036010BA		KNIFF REST ASM.				*		1	
3	D	MAT03602000		KNIFE REST LID				*		1	
4		SS2060320SP		SCREW 3/32-56 L=3.2				*		2	
5		MAT03604000		KNIFE REST PLATE				*		1	
6		SS4110715SP		SCREW 11/64-40 L=7				*		1	
7		MAT0360500A		FIXING KNIFE				*		1	
8		MAT03606000		WORK KNIFE				*		1	
9		MAT03607000		KNIFE SHAFT				*		1	
10		MAT036090A0		OIL SUPPLY HOLDER ASM.				*		1	
11		MAT03610000		OIL SUPPLY PIPE BRACKET				*		2	
12		MAT02111000		SPRING				*		1	
13		MAT02502000		DRIVING LEVER				*		1	
14		BP400000000		VINYL TUBE, WHITE D=4				*		0.2	
15		SS2060510SP		SCREW 3/32-56 L=4.5				*		1	
16		SS6090520SP		SCREW 9/64-40 L=5.0				*		1	
17		SS6080410SP		SCREW 1/8-44 L=4				*		2	
18		SS6060410TP		SCREW 3/32-56 L=3.5				*		2	
19		SS7060310SP		SCREW 3/32-56 L=3				*		1	
20		WP0250516SD		WASHER 2.5X6X0.5				*		1	
21		MAT03603000A		KNIFE REST BRACKET				*		1	
22		SS4120915SP		SCREW 3/16-28 L=9				*		1	
23		SS4150715SP		SCREW 15/64-28 L=7				*		1	
24		SS6111210SP		SCREW 11/64-40 L=12				*		1	
25		MAT03608000		DRIVE PIN				*		1	
26		MAT042010A0		SIDE COVER COMPL.				*		1	
27		MAT02106000		SPRING				*		1	
28	R	MAT02503000	40045962	SLIDE BLOCK				*		1	1.00
29		SS7110840SP		SCREW 11/64-40 L=7.8				*		2	
30		SS7080520SP		SCREW 1/8-44 L=4.9				*		2	

HOW TO MAKE USE OF THIS PARTS LIST

1.As to "#01" and "#02" refer to the "Note" given at the bottom of the respective pages.

2.Codes on the "Qty" column

- Each numeral indicates the number of parts required.
- "0.1" and "2.5" indicate the length (in meters) of the respective parts.

3.Parentheses mean that the corresponding part is a subpart that constructs an assembly part.

4.Dotted lines on the Figures indicate assembly parts.

1. リストページの# 0 1、# 0 2の印は、ページ下の"注記"の説明を参照下さい。
2. 数量欄の数字は、個数を表し、0. 1、2. 5等の数値は、長さ（単位メートル）を表します。
3. 数量欄の（ ）は、組部品を構成している子部品であることを意味します。
4. イラストページの-----枠は、組構成であることを意味します。

NUMERICAL INDEX OF PARTS

PART NO	PAGE	REF NO.
BP400000000	2	14
MAT02106000	2	27
MAT02111000	2	12
MAT02502000	2	13
MAT02503000	2	28
MAT036010BA	2	2
MAT03602000	2	3
MAT03603000A	2	21
MAT03604000	2	5
MAT0360500A	2	7
MAT03606000	2	8
MAT03607000	2	9
MAT03608000	2	25
MAT036090A0	2	10
MAT03610000	2	11
MAT042000A0	2	1
MAT042010A0	2	26
SS2060320SP	2	4
SS2060510SP	2	15
SS4110715SP	2	6
SS4120915SP	2	22
SS4150715SP	2	23
SS6060410TP	2	18
SS6080410SP	2	17
SS6090520SP	2	16
SS6111210SP	2	24
SS7060310SP	2	19
SS7080520SP	2	30
SS7110840SP	2	29
WP0250516SD	2	20