

MODEL : S159/S160/S161/S162

List No : 0858-01

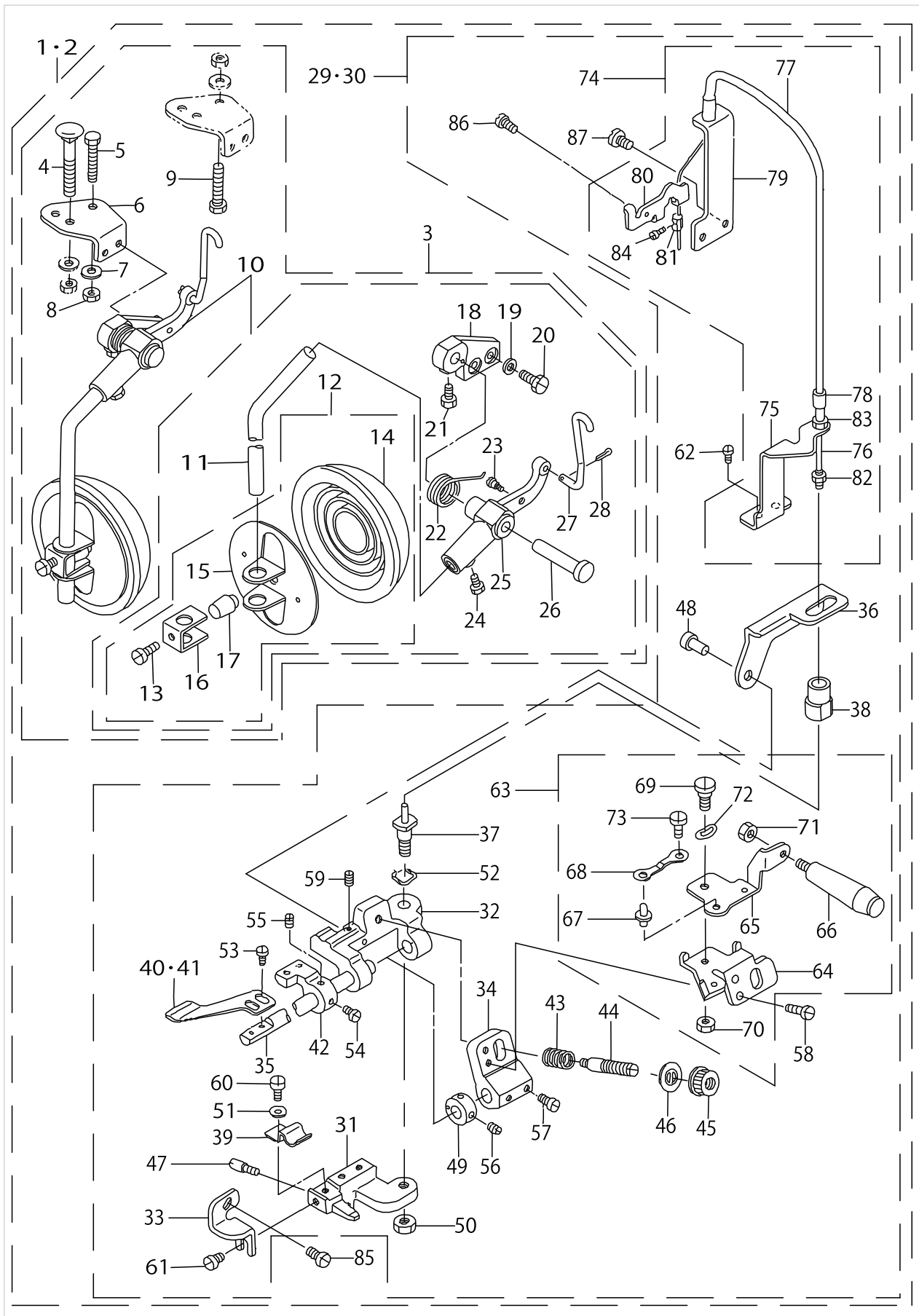
PARTS LIST

Published:05/12/2017

CONTENTS

S158 : SAFETY STITCH MACHINE WITH PEDAL, S160 : OVERLOCK STITCH MACHINE WITH..... PEDAL	1
S161 : SAFETY STITCH MACHINE WITH MANUAL TYPE, S162 : OVERLOCK STITCH MACHINE.. WITH MANUAL TYPE	7
HOW TO MAKE USE OF THIS PARTS LIST	11

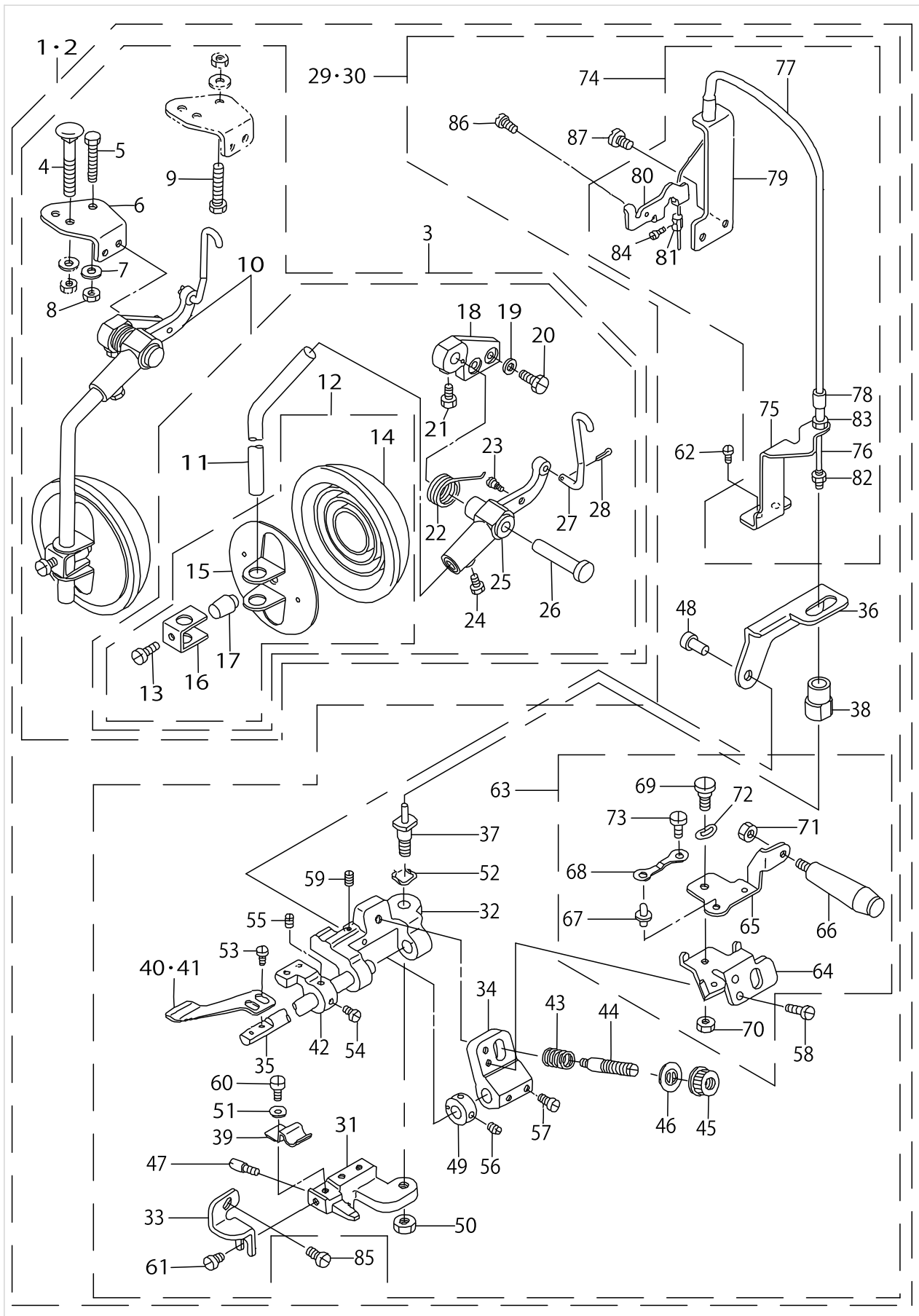
S158 : SAFETY STITCH MACHINE WITH PEDAL, S160 : OVERLOCK STITCH MACHINE WITH PEDAL



S158 : SAFETY STITCH MACHINE WITH PEDAL, S160 : OVERLOCK STITCH MACHINE WITH PEDAL

No.	Supply Code	Parts No.	Replacement	Parts name	Remarks	Choice	Step	Level	Cons	Qty	Rep. QTY
1		MAS159000A0		GATHERING DEVICE ASM.	FOR S159					1	
2		MAS160000A0		GATHERING DEVICE ASM.	FOR S160					1	
3	R	MAS107010A0	MAS107010B0	KNEE OPERATING DEVICE ASM.				*		1	1.00
4		MAS10704000		BOLT	FOR SEMI-SUNKEN TYPE TABLE (FOR EXPORT)			*		1	
5		SM9083013SC		SCREW M8 L=30	FOR SEMI-SUNKEN TYPE TABLE			*		1	
6		MAS10701000		INSTALLING PLATE				*		1	
7		WP0850002SC		WASHER 8.5X18X1.6	FOR SEMI-SUNKEN TYPE TABLE			*		1	
8		NM6080600SM		NUT M8	FOR SEMI-SUNKEN TYPE TABLE			*		1	
9		SM9084533SC		SCREW M8 L=45	FOR FULL-Y-SUNKEN TYPE TABLE			*		2	
10		MAS107010C0		KNEE PRESS PLATE ASM.				*		1	
11		MAS10702000		ROD				*		1	
12	R	11023751	22934251	KNEE PRESS PLATE ASM.				*		1	1.00
13		SM9061203SE		SCREW M6 L=12				*		1	
14		22934509		KNEE PAD PLATE COVER				*		1	
15		22934202		KNEE PAD PLATE				*		1	
16		22934301		KNEE PAD PLATE SUPPORT				*		1	
17		22934400		KNEE PAD PLATE RUBBER				*		1	
18		MAS10501000		LEVER INSTALLING BASE				*		1	
19		WP0740516SP		WASHER 7.4X11.8X0.5				*		2	
20		SS9681610TP		SCREW 9/32-28 L=16				*		2	
21		SS9151210TP		SCREW 15/64-28 L=11.8				*		1	
22		MAS10503000		SPRING				*		1	
23		SD0550501SP		HINGE SCREW D=5.5 H=5				*		1	
24		SS9151210TP		SCREW 15/64-28 L=11.8				*		1	
25		MAS10502000		LEVER				*		1	
26		MAS10504000		PIN				*		1	
27		MAS10703000		CONNECTING ROD				*		1	
28		PD02010000D		SPLIT PIN 1.8X10				*		1	
29		MAS159010A0		PEDAL SHIRRING ATTACHMENT ASM.	FOR S159			*		1	
30		MAS160010A0		PEDAL SHIRRING ATTACHMENT ASM.	FOR S160			*		1	
31	R	MAS15901000	MAS159010B0	PRESSER PLATE BASE				*		1	1.00
32		MAS15902000		SWING BASE				*		1	
33		MAS15903000		BRACKET				*		1	
34		MAS15904000		ARM				*		1	
35		MAS15905000		SHAFT				*		1	
36		MAS15908000		LIFTING LEVER				*		1	
37		MAS15909000		LIFTING SHAFT				*		1	
38		MAS15910000		LIFTING COLLAR				*		1	
39		MAS15911000		SPRING				*		1	
40		MAS05108000		INTERMITTENT SHIRRING PRESSER	FOR S159			*		1	

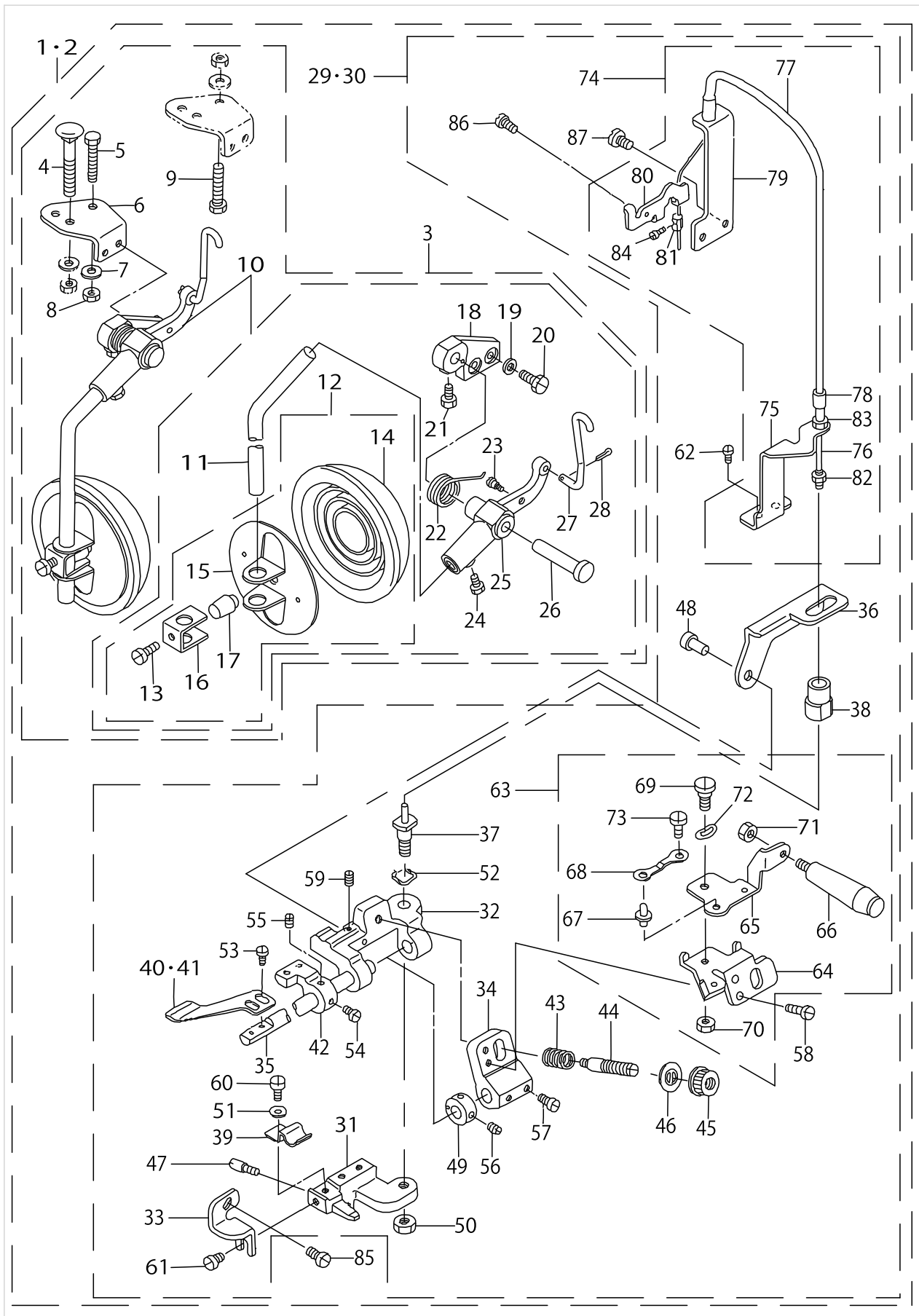
S158 : SAFETY STITCH MACHINE WITH PEDAL, S160 : OVERLOCK STITCH MACHINE WITH PEDAL



S158 : SAFETY STITCH MACHINE WITH PEDAL, S160 : OVERLOCK STITCH MACHINE WITH PEDAL

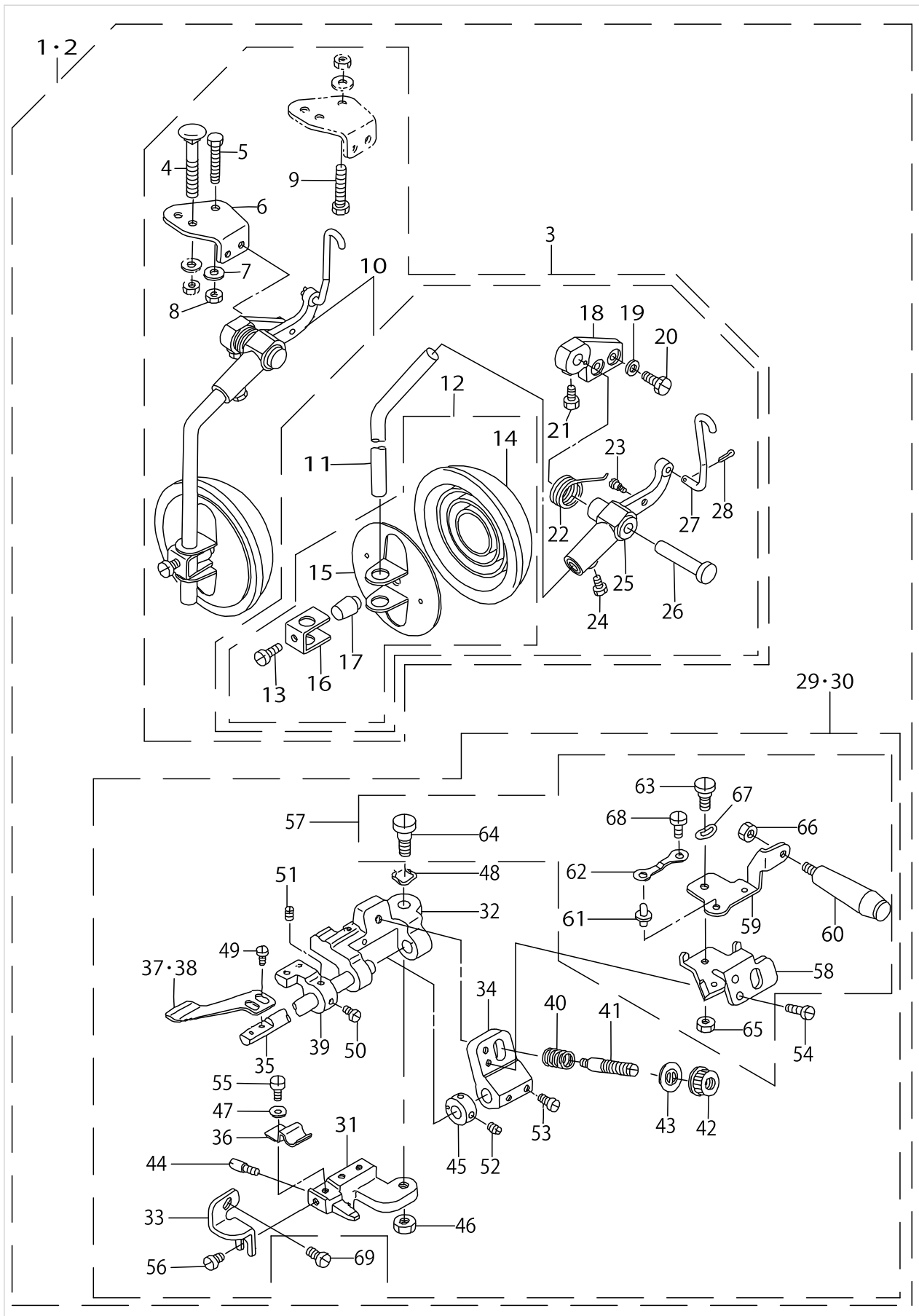
No.	Supply Code	Parts No.	Replacement	Parts name	Remarks	Choice	Step	Level	Cons	Qty	Rep. QTY
41		MAS05208000		INTERMITTENT SHIRring PLATE	FOR S160			*		1	
42		MAS05212000		PIPING MOUNTING BLOCK				*		1	
43		MAS05205000		SPRING				*		1	
44		B3105804000		TENSION POST				*		1	
45		B3116125000		TENSION NUT				*		1	
46		B3120125000		ROTATING STOPPER				*		1	
47		MAS05202000		SCREW				*		1	
48		MAS05714000		PIN				*		1	
49		CS0790811SP		THRUST COLLAR D=7.94 W=8				*		1	
50		NS6160520SP		NUT 1/4-24				*		1	
51		WP0480856SP		WASHER 4.8X8.4X0.8				*		1	
52		WZ0850302K0		WAVED WASHER 8.5X12.5X0.3				*		1	
53	R	SS6090650SP	SS6090670TP	SCREW 9/64-40 L=6				*		2	1.00
54		SS6110650TP		SCREW 11/64-40 L=5.5				*		1	
55		SS8110520TP		SCREW 11/64-40 L= 4.5				*		1	
56		SS8110520TP		SCREW 11/64-40 L= 4.5				*		2	
57		SS6110710TP		SCREW 11/64-40 L= 6.5				*		2	
58		SS4090715SP		SCREW 9/64-40 L=7				*		2	
59		SS8090410SP		SCREW 9/64-40L=3.5				*		1	
60		SS7110710SP		SCREW 11/64-40 L=7				*		1	
61		SS7110720SP		SCREW 11/64-40 L=7				*		1	
62	R	SS7110910SP	SS7110910TP	SCREW 11/64-40 L=8.5				*		2	1.00
63		MAS159060A0		LIFTING ARM ASM.				*		1	
64		MAS15906000		LIFTING ARM				*		1	
65		MAS15907000		MANUAL LEVER ARM				*		1	
66		MAS15915000		MANUAL LEVER				*		1	
67		MAL12115000		ARM FIXING PLATE STOPPER				*		1	
68		MAL12116000		FIXING PLATE STOPPER SPRING				*		1	
69		SD0600352SP		HINGE SCREW				*		1	
70		NS6110350SP		NUT 11/64-40				*		1	
71		NM6050001SP		NUT M5				*		1	
72		WZ0640312K0		WAVED WASHER				*		1	
73		SS7110340SP		SCREW 11/64-40 L= 3.2				*		1	
74		MAS159120A0		WIRE STOPPER ARM.				*		1	
75		MAS15912000		WIRE STOPPER				*		1	
76	R	MAS159130A0	MAS159120A0	WIRE ASM				*		1	1.00
77	R	MAS15914000	MAS159120A0	WIRE TUBE				*		1	1.00
78		MAS12512000		WIRE ADJUSTING STUD				*		1	
79		MAS057180A0		WIRE SUPPORT ASM.				*		1	
80	D	MAS05719000		LIFTING LEVER CONNECTOR				*		1	
81		MAS05720000		WIRE STOPPER				*		1	
82		NS6090310SP		NUT 9/64-40				*		1	
83		NS6110310SP		NUT 11/64-40				*		1	
84		SS9090640SP		SCREW 9/64-40 L=6				*		1	
85		SS7110840SP		SCREW 11/64-40 L=7.8				*		1	
86		SS7110710SP		SCREW 11/64-40 L=7				*		1	

S158 : SAFETY STITCH MACHINE WITH PEDAL, S160 : OVERLOCK STITCH MACHINE WITH PEDAL



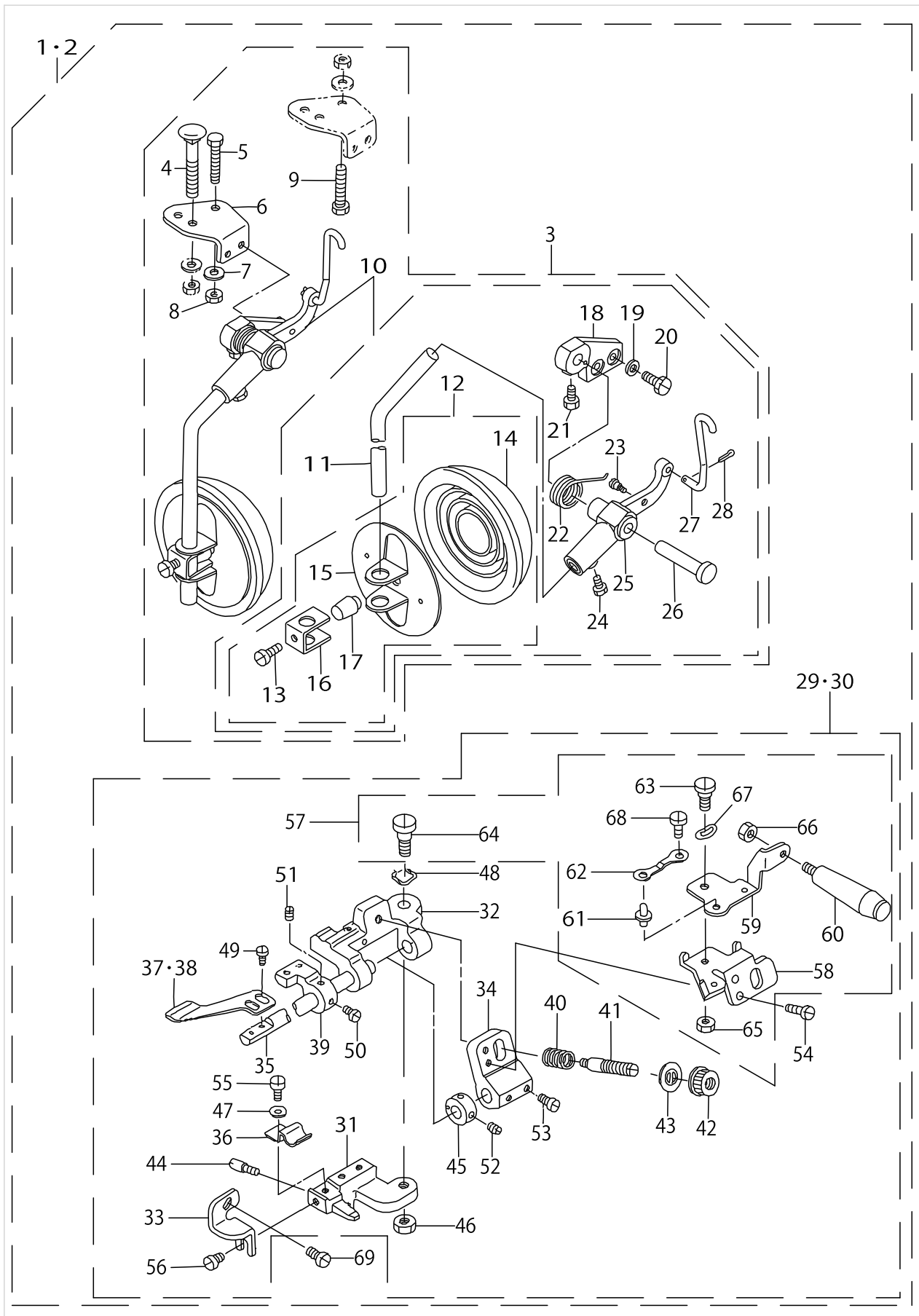
S158 : SAFETY STITCH MACHINE WITH PEDAL, S160 : OVERLOCK STITCH MACHINE WITH PEDAL

No.	Supply Code	Parts No.	Replacement	Parts name	Remarks	Choice	Step	Level	Cons	Qty	Rep. QTY
87		SS6151040SP		SCREW15/64-28L=10				*		2	



S161 : SAFETY STITCH MACHINE WITH MANUAL TYPE, S162 : OVERLOCK STITCH MACHINE WITH MANUAL TYPE

No.	Supply Code	Parts No.	Replacement	Parts name	Remarks	Choice	Step	Level	Cons	Qty	Rep. QTY
1		MAS161000A0		GATHERING DEVICE ASM.	FOR S161					1	
2		MAS162000A0		GATHERING DEVICE ASM.	FOR S162					1	
3	R	MAS107010A0	MAS107010B0	KNEE OPERATING DEVICE ASM.				*		1	1.00
4		MAS10704000		BOLT	FOR SEMI-SUNKEN TYPE TABLE (FOR EXPORT)			*		1	
5		SM9083013SC		SCREW M8 L=30	FOR SEMI-SUNKEN TYPE TABLE			*		1	
6		MAS10701000		INSTALLING PLATE				*		1	
7		WP0850002SC		WASHER 8.5X18X1.6	FOR SEMI-SUNKEN TYPE TABLE			*		1	
8		NM6080600SM		NUT M8	FOR SEMI-SUNKEN TYPE TABLE			*		1	
9		SM9084533SC		SCREW M8 L=45	FOR FULL-Y-SUNKEN TYPE TABLE			*		2	
10		MAS107010C0		KNEE PRESS PLATE ASM.				*		1	
11		MAS10702000		ROD				*		1	
12	R	11023751	22934251	KNEE PRESS PLATE ASM.				*		1	1.00
13		SM9061203SE		SCREW M6 L=12				*		1	
14		22934400		KNEE PAD PLATE RUBBER				*		1	
15		22934202		KNEE PAD PLATE				*		1	
16		22934301		KNEE PAD PLATE SUPPORT				*		1	
17		22934400		KNEE PAD PLATE RUBBER				*		1	
18		MAS10501000		LEVER INSTALLING BASE				*		1	
19		WP0740516SP		WASHER 7.4X11.8X0.5				*		2	
20		SS9681610TP		SCREW 9/32-28 L=16				*		2	
21		SS9151210TP		SCREW 15/64-28 L=11.8				*		1	
22		MAS10503000		SPRING				*		1	
23		SD0550501SP		HINGE SCREW D=5.5 H=5				*		1	
24		SS9151210TP		SCREW 15/64-28 L=11.8				*		1	
25		MAS10502000		LEVER				*		1	
26		MAS10504000		PIN				*		1	
27		MAS10703000		CONNECTING ROD				*		1	
28		PD02010000D		SPLIT PIN 1.8X10				*		1	
29	R	MAS161010A0	MAS161010B0	PEDAL SHIRRING ATTACHMENT ASM.	FOR S161			*		1	1.00
30		MAS162010A0		PEDAL SHIRRING ATTACHMENT ASM.	FOR S162			*		1	
31	R	MAS15901000	MAS159010B0	PRESSER PLATE BASE				*		1	1.00
32		MAS15902000		SWING BASE				*		1	
33		MAS15903000		BRACKET				*		1	
34		MAS15904000		ARM				*		1	
35		MAS15905000		SHAFT				*		1	
36		MAS15911000		SPRING				*		1	
37		MAS05108000		INTERMITTENT SHIRRING PRESSER	FOR S161			*		1	
38		MAS05208000		INTERMITTENT SHIRRING PLATE	FOR S162			*		1	
39		MAS05212000		PIPING MOUNTING BLOCK				*		1	
40		MAS05205000		SPRING				*		1	



S161 : SAFETY STITCH MACHINE WITH MANUAL TYPE, S162 : OVERLOCK STITCH MACHINE WITH MANUAL TYPE

No.	Supply Code	Parts No.	Replacement	Parts name	Remarks	Choice	Step	Level	Cons	Qty	Rep. QTY
41		B3105804000		TENSION POST				*		1	
42		B3116125000		TENSION NUT				*		1	
43		B3120125000		ROTATING STOPPER				*		1	
44		MAS05202000		SCREW				*		1	
45		CS0790811SP		THRUST COLLAR D=7.94 W=8				*		1	
46		NS6160520SP		NUT 1/4-24				*		1	
47		WP0480856SP		WASHER 4.8X8.4X0.8				*		1	
48		WZ0850302K0		WAVED WASHER 8.5X12.5X0.3				*		1	
49	R	SS6090650SP	SS6090670TP	SCREW 9/64-40 L=6				*		2	1.00
50		SS6110650TP		SCREW 11/64-40 L=5.5				*		1	
51		SS8110520TP		SCREW 11/64-40 L= 4.5				*		1	
52		SS8110520TP		SCREW 11/64-40 L= 4.5				*		2	
53		SS6110710TP		SCREW 11/64-40 L= 6.5				*		2	
54		SS4090715SP		SCREW 9/64-40 L=7				*		2	
55		SS7110710SP		SCREW 11/64-40 L=7				*		1	
56		SS7110720SP		SCREW 11/64-40 L=7				*		1	
57		MAS159060A0		LIFTING ARM ASM.				*		1	
58		MAS15906000		LIFTING ARM				*		1	
59		MAS15907000		MANUAL LEVER ARM				*		1	
60		MAS15915000		MANUAL LEVER				*		1	
61		MAL12115000		ARM FIXING PLATE STOPPER				*		1	
62		MAL12116000		FIXING PLATE STOPPER SPRING				*		1	
63		SD0600352SP		HINGE SCREW				*		1	
64		SD0790801SP		HINGE SCREW D=7.94 H=8				*		1	
65		NS6110350SP		NUT 11/64-40				*		1	
66		NM6050001SP		NUT M5				*		1	
67		WZ0640312K0		WAVED WASHER				*		1	
68		SS7110340SP		SCREW 11/64-40 L= 3.2				*		1	
69		SS7110840SP		SCREW 11/64-40 L=7.8				*		1	

HOW TO MAKE USE OF THIS PARTS LIST

1.As to "#01" and "#02" refer to the "Note" given at the bottom of the respective pages.

2.Codes on the "Qty" column

- Each numeral indicates the number of parts required.
- "0.1" and "2.5" indicate the length (in meters) of the respective parts.

3.Parentheses mean that the corresponding part is a subpart that constructs an assembly part.

4.Dotted lines on the Figures indicate assembly parts.

1. リストページの# 0 1、# 0 2の印は、ページ下の"注記"の説明を参照下さい。
2. 数量欄の数字は、個数を表し、0. 1、2. 5等の数値は、長さ（単位メートル）を表します。
3. 数量欄の（ ）は、組部品を構成している子部品であることを意味します。
4. イラストページの-----枠は、組構成であることを意味します。

NUMERICAL INDEX OF PARTS

PART NO	PAGE	REF NO.	PART NO	PAGE	REF NO.	PART NO	PAGE	REF NO.
11023751	2	12	MAS107010A0	2	3	MAS162010A0	8	29-30
11023751	8	12	MAS107010A0	8	3	NM6050001SP	4	71
22934202	2	15	MAS107010C0	2	10	NM6050001SP	10	66
22934202	8	15	MAS107010C0	8	10	NM6080600SM	2	8
22934301	2	16	MAS10702000	2	11	NM6080600SM	8	8
22934301	8	16	MAS10702000	8	11	NS6090310SP	4	82
22934400	2	17	MAS10703000	2	27	NS6110310SP	4	83
22934400	8	17	MAS10703000	8	27	NS6110350SP	4	70
22934509	2	14	MAS10704000	2	4	NS6110350SP	10	65
B3105804000	4	44	MAS10704000	8	4	NS6160520SP	4	50
B3105804000	10	41	MAS12512000	4	78	NS6160520SP	10	46
B3116125000	4	45	MAS159000A0	2	1-2	PD02010000D	2	28
B3116125000	10	42	MAS15901000	2	31	PD02010000D	8	28
B3120125000	4	46	MAS15901000	8	31	SD0550501SP	2	23
B3120125000	10	43	MAS159010A0	2	29-30	SD0550501SP	8	23
CS0790811SP	4	49	MAS15902000	2	32	SD0600352SP	4	69
CS0790811SP	10	45	MAS15902000	8	32	SD0600352SP	10	63
MAL12115000	4	67	MAS15903000	2	33	SD0790801SP	10	64
MAL12115000	10	61	MAS15903000	8	33	SM9061203SE	2	13
MAL12116000	4	68	MAS15904000	2	34	SM9061203SE	8	13
MAL12116000	10	62	MAS15904000	8	34	SM9083013SC	2	5
MAS05108000	2	40-41	MAS15905000	2	35	SM9083013SC	8	5
MAS05108000	8	37-38	MAS15905000	8	35	SM9084533SC	2	9
MAS05202000	4	47	MAS15906000	4	64	SM9084533SC	8	9
MAS05202000	10	44	MAS15906000	10	58	SS4090715SP	4	58
MAS05205000	4	43	MAS159060A0	4	63	SS4090715SP	10	54
MAS05205000	8	40	MAS159060A0	10	57	SS6090650SP	4	53
MAS05208000	4	40-41	MAS15907000	4	65	SS6090650SP	10	49
MAS05208000	8	37-38	MAS15907000	10	59	SS6110650TP	4	54
MAS05212000	4	42	MAS15908000	2	36	SS6110650TP	10	50
MAS05212000	8	39	MAS15909000	2	37	SS6110710TP	4	57
MAS05714000	4	48	MAS15910000	2	38	SS6110710TP	10	53
MAS057180A0	4	79	MAS15911000	2	39	SS6151040SP	6	87
MAS05719000	4	80	MAS15911000	8	36	SS7110340SP	4	73
MAS05720000	4	81	MAS15912000	4	75	SS7110340SP	10	68
MAS10501000	2	18	MAS159120A0	4	74	SS7110710SP	4	86
MAS10501000	8	18	MAS159130A0	4	76	SS7110710SP	10	55
MAS10502000	2	25	MAS15914000	4	77	SS7110720SP	4	61
MAS10502000	8	25	MAS15915000	4	66	SS7110720SP	10	56
MAS10503000	2	22	MAS15915000	10	60	SS7110840SP	4	85
MAS10503000	8	22	MAS160000A0	2	1-2	SS7110840SP	10	69
MAS10504000	2	26	MAS160010A0	2	29-30	SS7110910SP	4	62
MAS10504000	8	26	MAS161000A0	8	1-2	SS8090410SP	4	59
MAS10701000	2	6	MAS161010A0	8	29-30	SS8110520TP	4	56
MAS10701000	8	6	MAS162000A0	8	1-2	SS8110520TP	10	52

NUMERICAL INDEX OF PARTS

PART NO	PAGE	REF NO.
SS9090640SP	4	84
SS9151210TP	2	24
SS9151210TP	8	24
SS9681610TP	2	20
SS9681610TP	8	20
WP0480856SP	4	51
WP0480856SP	10	47
WP0740516SP	2	19
WP0740516SP	8	19
WP0850002SC	2	7
WP0850002SC	8	7
WZ0640312K0	4	72
WZ0640312K0	10	67
WZ0850302K0	4	52
WZ0850302K0	10	48