

MODEL : DMN-5420N-7

List No : 0888-10

# PARTS LIST

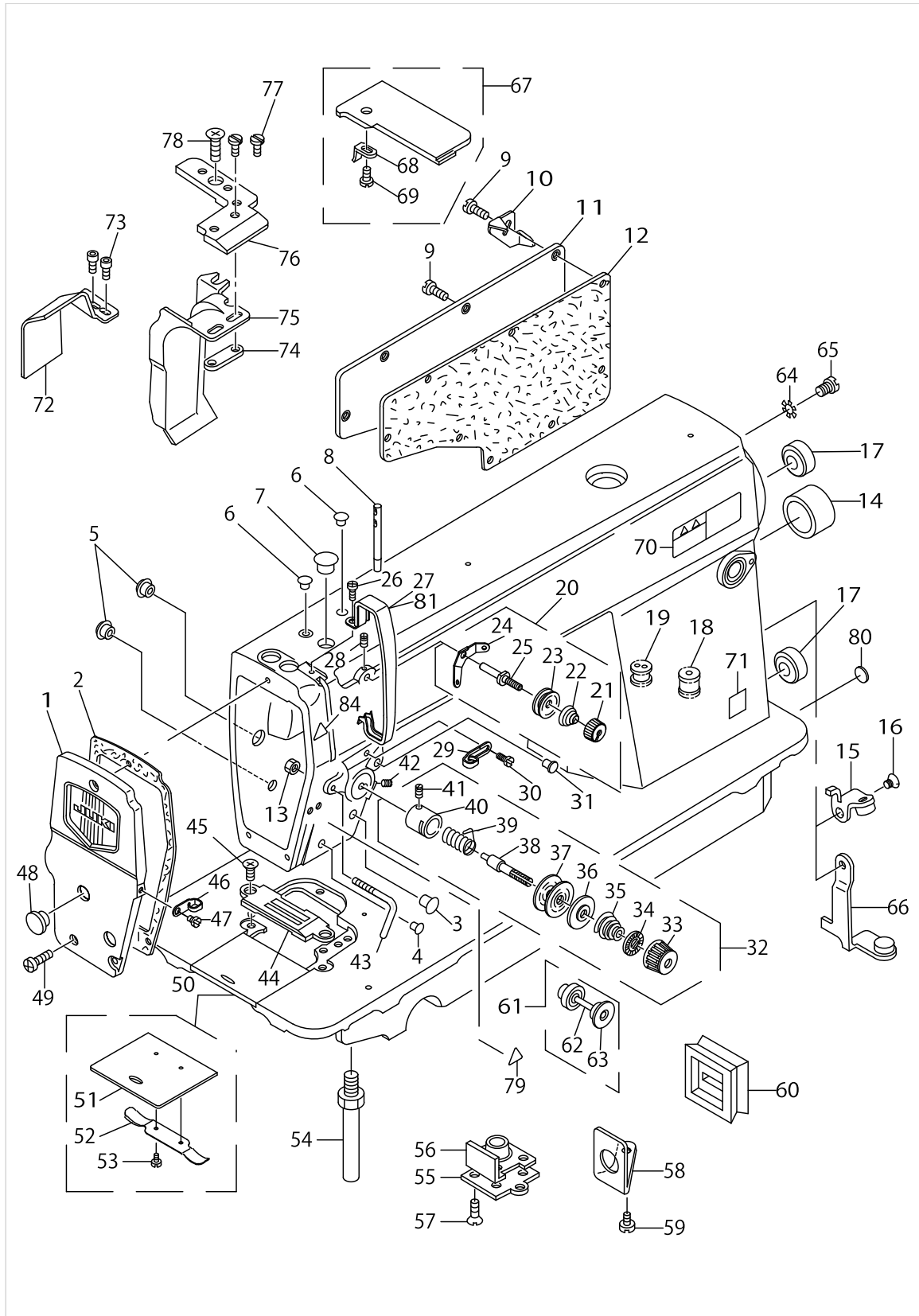
Published:05/12/2017

## CONTENTS

---

MACHINE FRAME & MISCELLANEOUS COVER COMPONENTS .....	1
MAIN SHAFT & THREAD TAKE-UP LEVER COMPONENTS .....	5
NEEDLE BAR, UPRIGHT SHAFT & HOOK DRIVING SHAFT COMPONENTS .....	9
HAND LIFTER COMPONENTS .....	11
FEED MECHANISM COMPONENTS.....	15
THREAD TRIMMER MECHANISM COMPONENTS.....	19
KNIFE COMPONENTS.....	23
NEEDLE BAR FRAME COMPONENTS.....	27
AUTOMATIC REVERSE FEED COMPONENTS.....	29
WIPER COMPONENTS.....	31
OIL LUBRICATION COMPONENTS .....	33
OIL RESERVOIR COMPONENTS .....	35
BELT COVER & BOBBIN WINDER COMPONENTS .....	37
THREAD STAND COMPONENTS.....	39
TABLE OF EXCHANGING GAUGE PARTS (1).....	41
TABLE OF EXCHANGING GAUGE PARTS (2).....	45
LIST FOR INFORMATION OF CHANGE.....	49
HOW TO MAKE USE OF THIS PARTS LIST .....	50

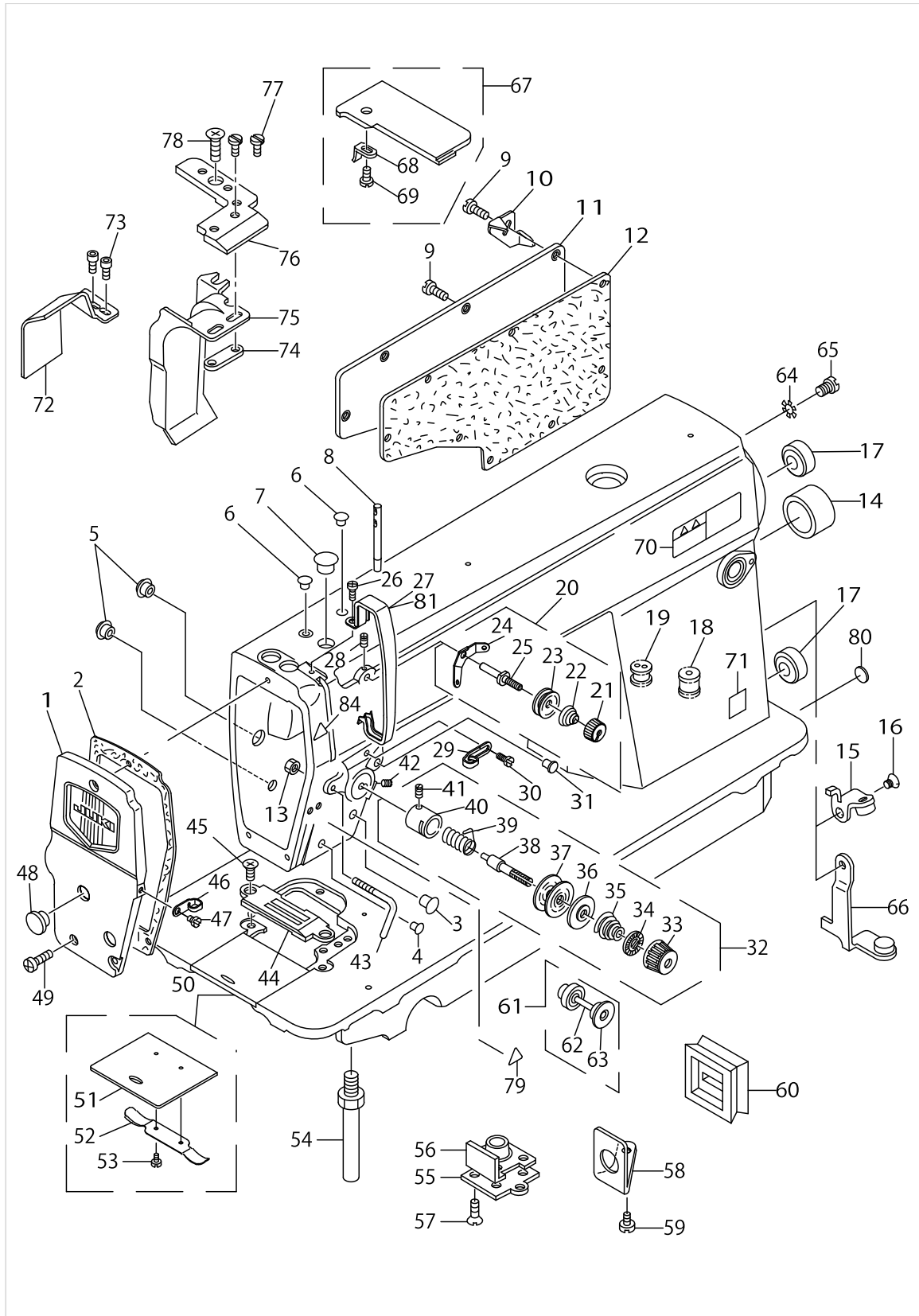
# MACHINE FRAME & MISCELLANEOUS COVER COMPONENTS



MACHINE FRAME & MISCELLANEOUS COVER COMPONENTS

No.	Supply Code	Parts No.	Replacement	Parts name	Remarks	Choice	Step	Level	Cons	Qty	Rep. QTY
1		11325750		FACE PLATE ASM.						1	
2		11300506		FACE PLATE GASKET						1	
3		TA1250504R0		RUBBER PLUG						1	
4		TA0850604R0		RUBBER PLUG						1	
5		TA1250504R0		RUBBER PLUG						2	
6		TA0850604R0		RUBBER PLUG						2	
7		TA1250705R0		RUBBER PLUG						1	
8		22958300		NEEDLE THREAD GUIDE PIN						1	
9		SS4120915SP		SCREW 3/16-28 L=9						8	
10	R	11102605	22954705	CORD HOLDER	FOR DMN-- 5420N-7-0B,-WB					1	1.00
11		22900401		WINDOW PLATE						1	
12		11003308		GASKET						1	
13		NS6090310SP		NUT 9/64-40						1	
14		TA2000502R0		RUBBER PLUG						1	
15		11095254		LEVER STOPPER ASM.	FOR DMN-- 5420N-7-0B,-WB					1	
16		SS1120710SP		SCREW 3/16-28 L=6.5	FOR DMN-- 5420N-7-0B,-WB					1	
17		TA2101002R0		RUBBER PLUG						2	
18		11030202		RUBBER BUSHING	FOR DMN-- 5420N-7-00					1	
19		40111022		MAGNET CORD RUBBER	FOR DMN-- 5420N-7-0B,-WB					1	
20		22945463		THREAD TENSION ASM. NO.1						1	
21		22945703		THREAD TENSION NUT				*		1	
22		22945505		THREAD TENSION SPRING				*		1	
23		22945802		THREAD TENSION DISK				*		2	
24	R	22945604	22963458	THREAD TENSION GUIDE		A	DDL8700H- -7/8700J-- 7/9000B, DLN6390-7	*		1	1.00
24	R	22945604	22945463	THREAD TENSION GUIDE		B	DDL8700-7 and so on	*		1	1.00
25	D	22945406		THREAD TENSION POST				*		1	
26		SS4120615SP		SCREW 3/16-28 L=6						1	
27		22900609		THREAD TAKE-UP LEVER COVER						1	
28		SS4120615SP		SCREW 3/16-28 L=6						1	
29		22920508		ARM THREAD GUIDE A						1	
30		22921001		SCREW						1	
31		TA0850604R0		RUBBER PLUG						1	
32		22945356		THREAD TENSION ASM.						1	
33		22921308		THREAD TENSION NUT				*		1	
34		22921407		ROTATION STOPPER				*		1	
35		22921704		THREAD TENSION SPRING A				*		1	
36		22921803		DISK STOPPER				*		1	
37		22921506		THREAD TENSION DISK				*		2	
38		22921209		THREAD TENSION POST				*		1	
39		22921605		THREAD TAKE-UP SPRING				*		1	
40		22945307		THREAD TENSION POST BASE				*		1	
41		SS8090670SP		SCREW 9/64-40 L=5.5				*		1	

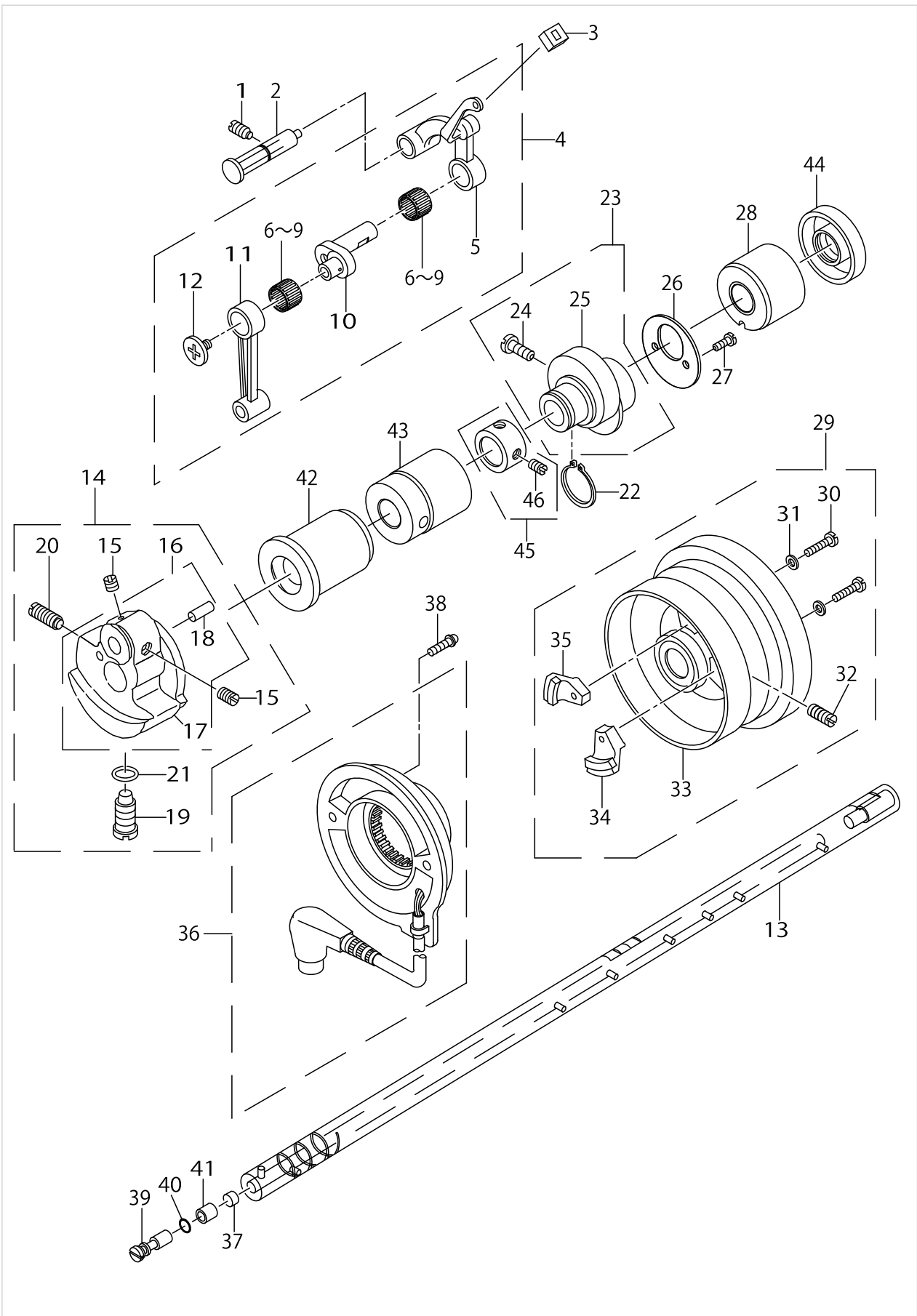
MACHINE FRAME & MISCELLANEOUS COVER COMPONENTS



MACHINE FRAME & MISCELLANEOUS COVER COMPONENTS

No.	Supply Code	Parts No.	Replacement	Parts name	Remarks	Choice	Step	Level	Cons	Qty	Rep. QTY
42		SS8150710TP		SCREW 15/64-28 L=7						1	
43		22972608		ARMTHREADGUIDE C						1	
44		B1190530D00		GAUGE DD						1	
45		SS2110915SP		SCREW 11/64-40 L=8.5						2	
46		22920607		ARMTHREADGUIDE B						1	
47		SS6110610TP		SCREW 11/64-40 L=6						1	
48		TA1250406R0		RUBBER PLUG D=12.5 L=4						2	
49		SS4121015SP		SCREW 3/16-28 L=10						3	
50		22901250		SLIDE PLATE ASM.						1	
51		B1110012000		SLIDE PLATE				*		1	
52		11001609		BED SLIDE SPRING				*		1	
53		SS6060210SP		SCREW 3/32-56 L=1.9				*		1	
54		22901003		BED SCREW STUD						4	
55		11300407		PRESSER BAR SUPPORT						1	
56		11300605		GASKET						1	
57		SS1120710SP		SCREW 3/16-28 L=6.5						4	
58		11345709		OIL SHIELD						1	
59		SS6110610TP		SCREW 11/64-40 L=6						1	
60		11345600		OIL RUBBER						1	
61		B31334150A0		TENSION RELEASE PIN CAP ASM.						1	
62		B3118415000		TENSION RELEASE PIN				*		1	
63		B3136415000		CAP RING				*		1	
64		WT0530002KS		TOOTHED WASHER D=5.3						1	
65		SS4120615SP		SCREW 3/16-28 L=6						1	
66		11372554		LEVER STOPPER ASM.	FOR DMN-- 5420N-7-00					1	
67		B11155300AD		THROAT PLATE COVER						1	
68		B1115522000A		OPENCOVERSPRING				*		1	
69		SS4080310SP		SCREW 1/8-44 L=3.4				*		1	
70		CM301300001		SAFETY LABEL						1	
71		40116677		GOST_SAFTY_LABEL_S	FOR JE					1	
72		11346400		WASTE MATERIAL GUIDE						1	
73		11345808		SCREW						2	
74		B1193530000		WASTE MATERIAL GUARD PLATE						1	
75		11346905		WASTE MATERIAL GUARD E						1	
76		11346004		NEEDLE PLATE A						1	
77		SS6080410SP		SCREW 1/8-44 L=4						2	
78		SS2110915SP		SCREW 11/64-40 L=8.5						2	
79		CM300200001		ATTENTION SEAL						2	
80		22901805		GROUND MARK						1	
81		11415205		THREAD TAKE-UP LEVER COVER(JE)	FOR JE					1	

MAIN SHAFT & THREAD TAKE-UP LEVER COMPONENTS

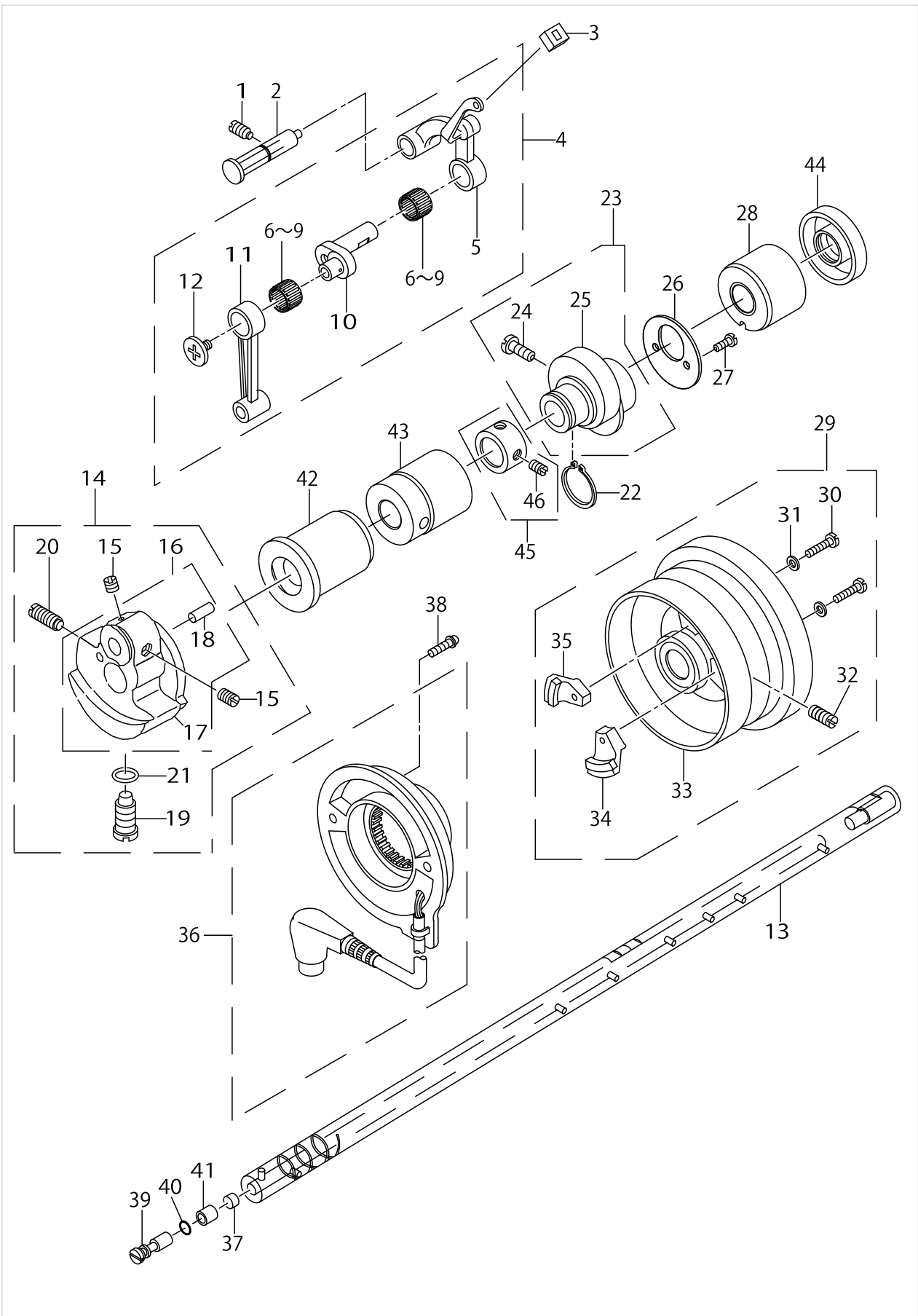


MAIN SHAFT & THREAD TAKE-UP LEVER COMPONENTS

No.	Supply Code	Parts No.	Replacement	Parts name	Remarks	Choice	Step	Level	Cons	Qty	Rep. QTY
1		SS8151150TP		SCREW 15/64-28 L=10.5						1	
2		11017357		THREAD TAKE-UP CRANK SHAFT ASM.						1	
3		22919203		OIL PROTECTING RUBBER						1	
4		22918072		THREAD TAKE-UP LEVER COMPL.						1	
5	R	22918064	22918072	THREAD TAKE-UP LEVER ASM.				*		1	1.00
6		22918403		NEEDLE BEARING A	SELECTIVE PARTS(A~D)			*		2	
7		22918502		NEEDLE BEARING B	SELECTIVE PARTS(A~D)			*		2	
8		22918601		NEEDLE BEARING C	SELECTIVE PARTS(A~D)			*		2	
9		22918700		NEEDLE BEARING D	SELECTIVE PARTS(A~D)			*		2	
10		22918106		NEEDLE BAR CRANK				*		1	
11		22906606		NEEDLE BAR CRANK ROD				*		1	
12	R	22918304	B1903552000	LEFT SCREW				*		1	1.00
13		11349008		MAIN SHAFT						1	
14		40097024		COUNTER WEIGHT MN COMP.						1	
15		SS8660610TP		SCREW 1/4-40 L=6				*		2	
16		40095787		COUNTER WEIGHT_MN ASM.				*		1	
17		40095788		COUNTER WEIGHT_MN				*		1	
18		PS0400082KP		SPRING PIN				*		1	
19		SS7681650TP		SCREW 9/32-28 L=16				*		1	
20		SS8681650TP		SCREW 9/32-28 L=16				*		1	
21		RO044240100		RUBBER RING				*		1	
22		RC1850001KP		SNAP RING 18.5						1	
23		11302353		FEED DRIVE ECCENTRIC CAM ASM.						1	
24		SS6661110SP		SCREW 1/4-40 L=11				*		2	
25	R	11302304	11302353	FEED DRIVE ECCENTRIC CAM				*		1	1.00
26		22910103		THRUST COLLAR						1	
27		SS4090615SP		SCREW 9/64-40 L=6						2	
28		11002409		MAIN SHAFT BUSHING REAR						1	
29		11071495		HAND WHEEL ASM.						1	
30		SS6111210SP		SCREW 11/64-40L=12				*		2	
31		WP0450801SD		WASHER 4.5X10X0.8				*		2	
32		SS8151550SP		SCREW 15/64-28L=15				*		2	
33	D	11032158		HAND WHEEL ASM.				*		1	
34		M40071100AA		MAGNET FITTING BASE A ASM.				*		1	
35		M40071100AB		MAGNET FITTING BASE B ASM.				*		1	
36		22937965		DYNAMO STATOR						1	
37		11002904		ROLLER FELT						1	
38		SL4051001MZ		SCREW M5 L=9.6						2	
39		B1213552000A		OIL ADJUSTING PIN						1	
40		RO029180100		RUBBER RING						1	
41		B1215552000		OIL ADJUSTING COLLAR						1	
42		11349107		BUSHING FRONT						1	
43		22903306		BUSHING INTERMEDIATE						1	
44		40105231		OIL SEAL						1	



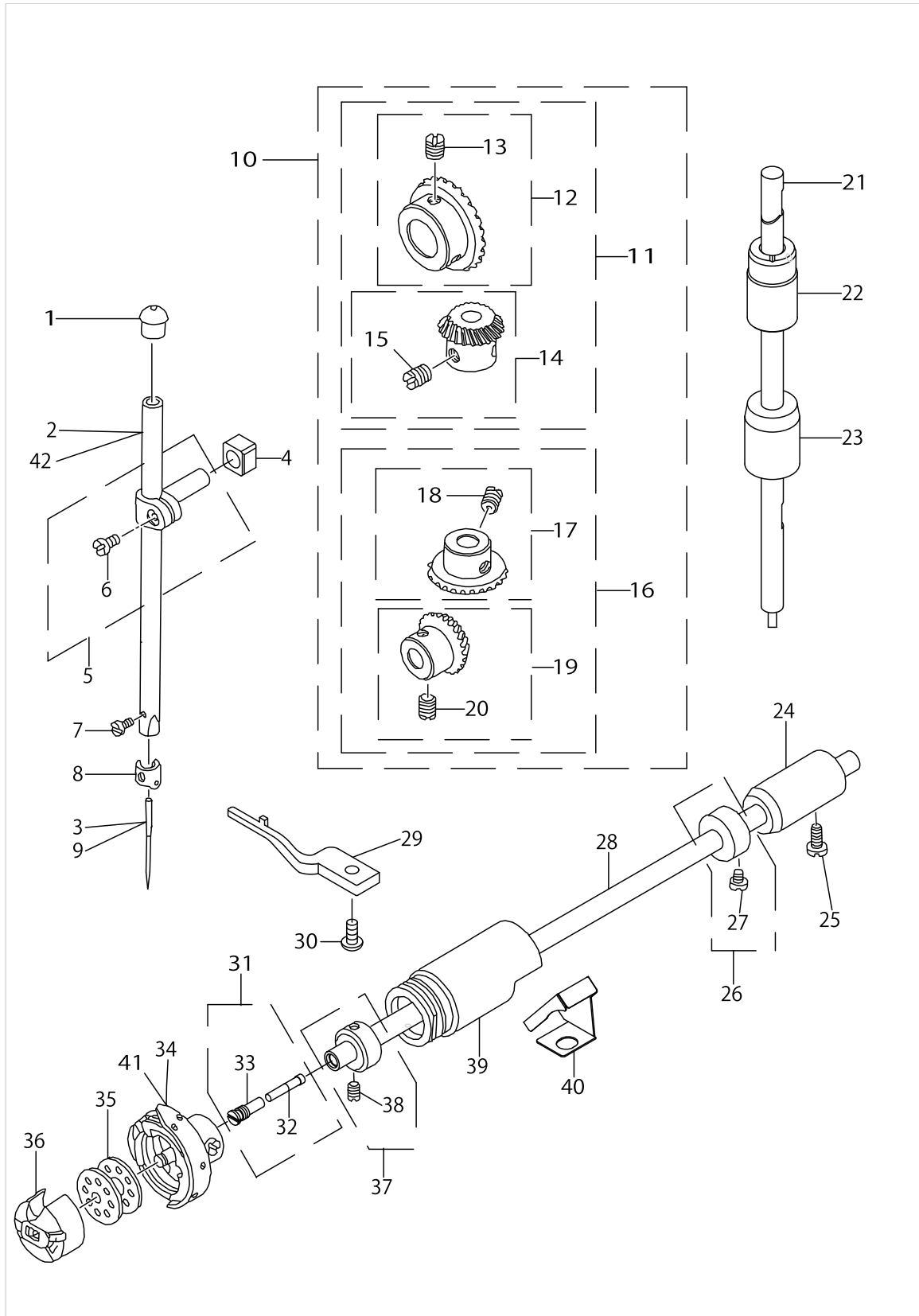
MAIN SHAFT & THREAD TAKE-UP LEVER COMPONENTS



MAIN SHAFT & THREAD TAKE-UP LEVER COMPONENTS

No.	Supply Code	Parts No.	Replacement	Parts name	Remarks	Choice	Step	Level	Cons	Qty	Rep. QTY
45		22904155		MAIN SHAFT THRU-ST COLLAR ASM.						1	
46		SS8660610TP		SCREW 1/4-40 L=6				*		2	

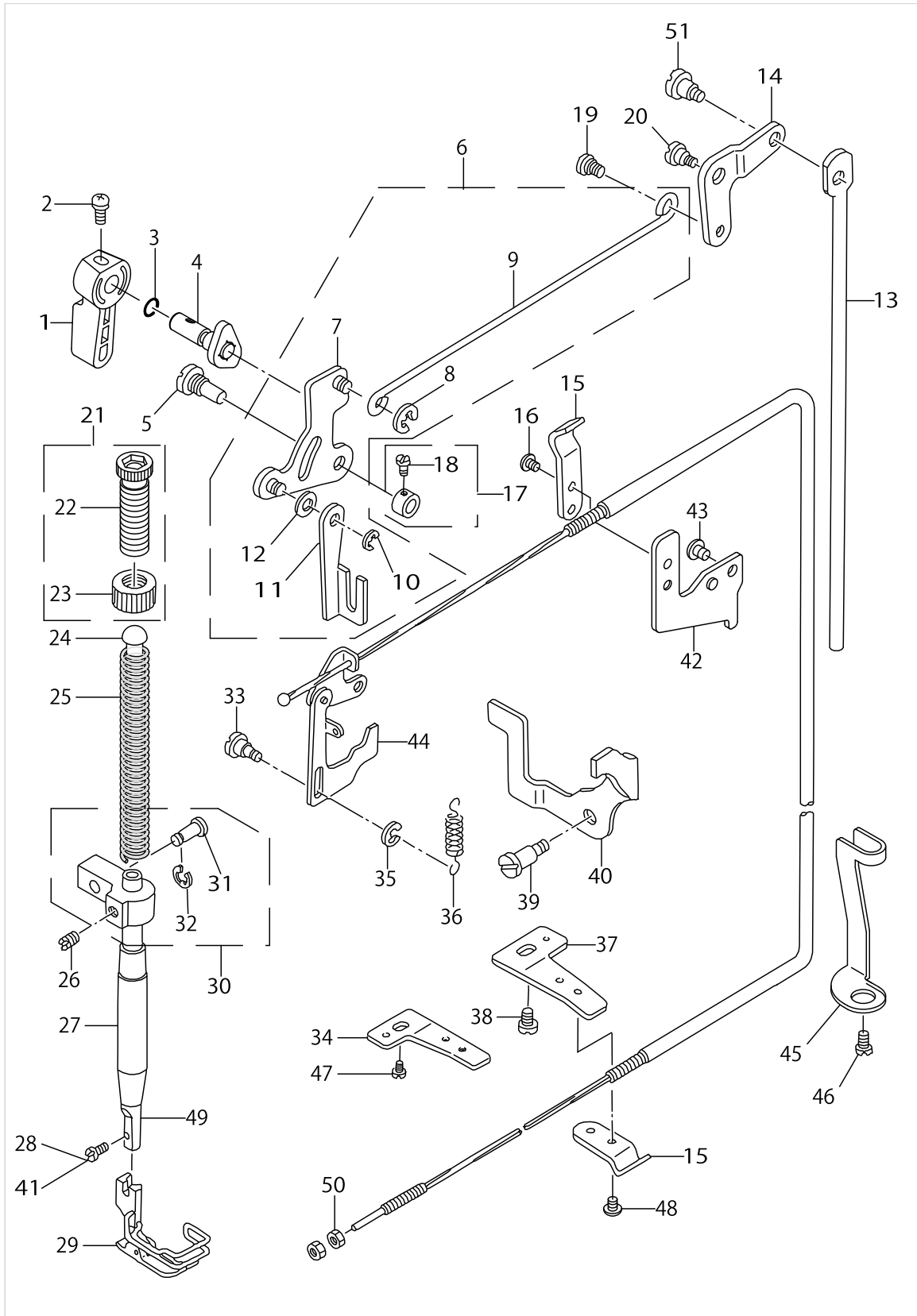
NEEDLE BAR, UPRIGHT SHAFT & HOOK DRIVING SHAFT COMPONENTS



NEEDLE BAR, UPRIGHT SHAFT & HOOK DRIVING SHAFT COMPONENTS

No.	Supply Code	Parts No.	Replacement	Parts name	Remarks	Choice	Step	Level	Cons	Qty	Rep. QTY
1		TA1250804R0		RUBBER PLUG						1	
2		B1401530A00		NEEDLE BAR A						1	
3		MC200500900		NEEDLE 134 NM90	FOR JE					1	
4		40090058		SLIDE BLOCK						1	
5		22906457		NEEDLE BAR HOLDER ASM.						1	
6		SS6090670TP		SCREW 9/64-40 L=6				*		1	
7		SS7080510TP		SCREW 1/8-44 L=4.5						1	
8		B1418530000		NEEDLE BAR THREAD GUIDE						1	
9		MDB100B1400		NEEDLE DBX1 #14						1	
10	R	B13061550C0	B13071550C0	GEAR & PINION ASM.						1	1.00
11		B13061550B0		GEAR & PINION ASM. UPPER				*		1	
12		B13050120A0		GEAR ASM.				*		1	
13		SS8660810TP		SCREW 1/4-40 L=8				*		2	
14		B13061550A0		PINION ASM.				*		1	
15		SS8660810TP		SCREW 1/4-40 L=8				*		2	
16		B13071550B0		GEAR & PINION ASM. LOWER				*		1	
17		B13071550A0		GEAR ASM. LARGE				*		1	
18		SS8660810TP		SCREW 1/4-40 L=8				*		2	
19		B13081550A0		PINION ASM.				*		1	
20		SS8660810TP		SCREW 1/4-40 L=8				*		2	
21		22905004		UPRIGHT SHAFT						1	
22		22905103		UPRIGHT SHAFT BUSHING UPPER						1	
23		11004207		UPRIGHT SHAFT BUSHING LOWER						1	
24		22916308		HOOK DRIVING SH- AFT BUSH REAR						1	
25		SS4120915SP		SCREW 3/16-28 L=9						1	
26		22917157		THRUST COLLAR ASM. REAR						1	
27		SS6110420TP		SCREW 11/64-40 L=4.8				*		2	
28		22916001		HOOK DRIVING SHAFT						1	
29	R	11038809	22942502	BOBBIN CASE HOLDER						1	1.00
30		SS4110915TP		SCREW 11/64-40 L=9						1	
31		22916555		OILSEALSCREWASM.						1	
32		11015906		OIL WICK				*		1	
33		22916506		SET SCREW				*		1	
34		11141355		HOOK ASM.						1	
35		22932909		BOBBIN						1	
36		11038759		BOBBIN CASE ASM.						1	
37		22917058		THRUST COLLAR ASM. FRONT						1	
38		SS8110410TP		SCREW 11/64-40 L=3.5				*		2	
39	R	11351004	11351053	BUSHING FRONT						1	1.00
40		22942601		OIL SHIELD						1	
41		11038650		HOOK ASM.	FOR USE IN JAPAN,JH					1	
42		B1401530B00		NEEDLE BAR B	FOR JE					1	

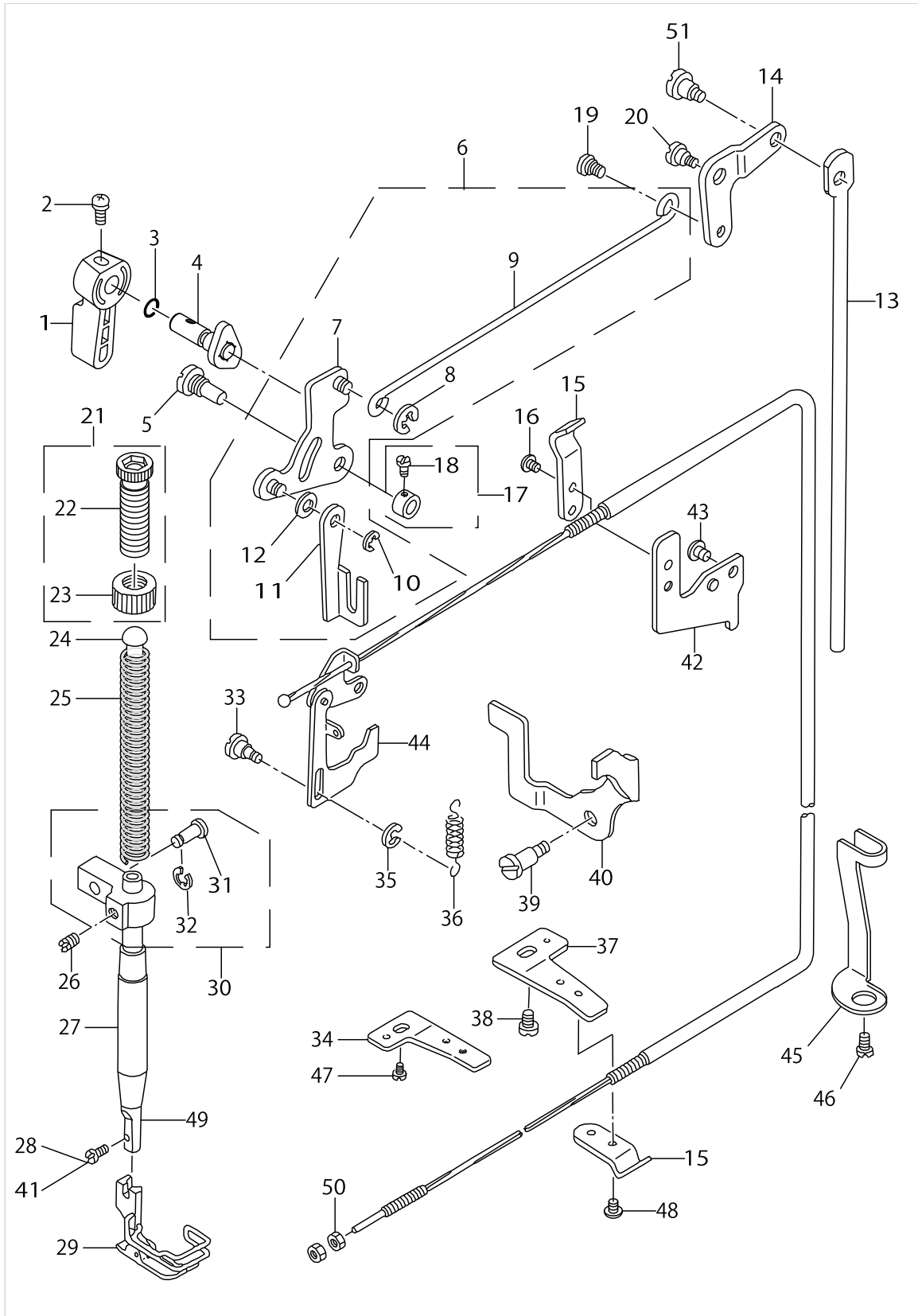
HAND LIFTER COMPONENTS



HAND LIFTER COMPONENTS

No.	Supply Code	Parts No.	Replacement	Parts name	Remarks	Choice	Step	Level	Cons	Qty	Rep. QTY
1		22907802		HAND LIFTER						1	
2		B1521555000		SCREW						1	
3		RO037180100		RUBBER RING						1	
4		22908552		HAND LIFTER CAM ASM.						1	
5		11301702		LINK SHAFT						1	
6		11301652		LIFTING LEVER ASM.						1	
7	R	22908156	22908354	LIFTING LINK ASM.				*		1	1.00
8		RE0500000K0		E-RING				*		2	
9		22908305		KNEE LIFTER SIDE ROD				*		1	
10		RE0500000K0		E-RING				*		1	
11		11301603		LIFTING LEVER				*		1	
12		WP0650876SD		WASHER 6.5X13X0.8				*		1	
13		11205408		CONNECTING ROD						1	
14		11205309		LIFTING LEVER LINK						1	
15		22944508		WIRE PRESSER A						2	
16		SS4110515SP		SCREW 11/64-40 L=5						2	
17		CS064061ASP		THRUST COLLAR ASM.						1	
18		SS7090620TP		SCREW 9/64-40 L=6.1				*		2	
19		22908909		HINGE SCREW						1	
20		SD0720331SP		HINGE SCREW D=7.24 H=3.3						1	
21		22907554		PRESSER SPRING REGULATOR ASM.						1	
22	R	22907505	22907554	PRESSER SPRING REGULATOR				*		1	1.00
23	R	22907604	22907554	PRESSER SPRING REGULATOR NUT				*		1	1.00
24		22907703		PRESSER GUIDE BAR						1	
25		22907406		PRESSER SPRING						1	
26		SS8660610TP		SCREW 1/4-40 L=6						1	
27		40060989		PRESSER BAR BUSHING LOWER						1	
28		SS7090710SP		SCREW 9/64-40 L=6.8	FOR DMN-- 5420N-7-00,-0B					1	
29		B1524530DB0		PRESSER FOOT ASM.						1	
30		11301355		NEEDLE BAR GUIDE BRACKET ASM.						1	
31		11301405		PIN				*		1	
32		RE0300000K0		E-RING 3				*		2	
33		11306107		TENSION RELEASE PLATE SHAFT						1	
34		22944706		WIRE PRESSER BASE LOWER	FOR DMN-- 5420N-7-00					1	
35		RE0300000K0		E-RING 3						1	
36		11305901		SPRING						1	
37		22962807		WIRE PRESSER PLATE B	FOR DMN-- 5420N-7-0B,-WB					1	
38		SS7110740TP		SCREW 11/64-40 L=7	FOR DMN-- 5420N-7-0B,-WB					1	
39		SD0640261SP		HINGE SCREW D=3.65 H=2.6						1	
40		11355609		TENSION RELEASE HOLDER						1	
41		SS6090910SP		SCREW 9/64-40 L=9	FOR DMN-- 5420N-7-WB					1	
42		22944607		WIRE PRESSER BASE UPPER						1	
43		SS4120615SP		SCREW 3/16-28 L=6						1	

HAND LIFTER COMPONENTS

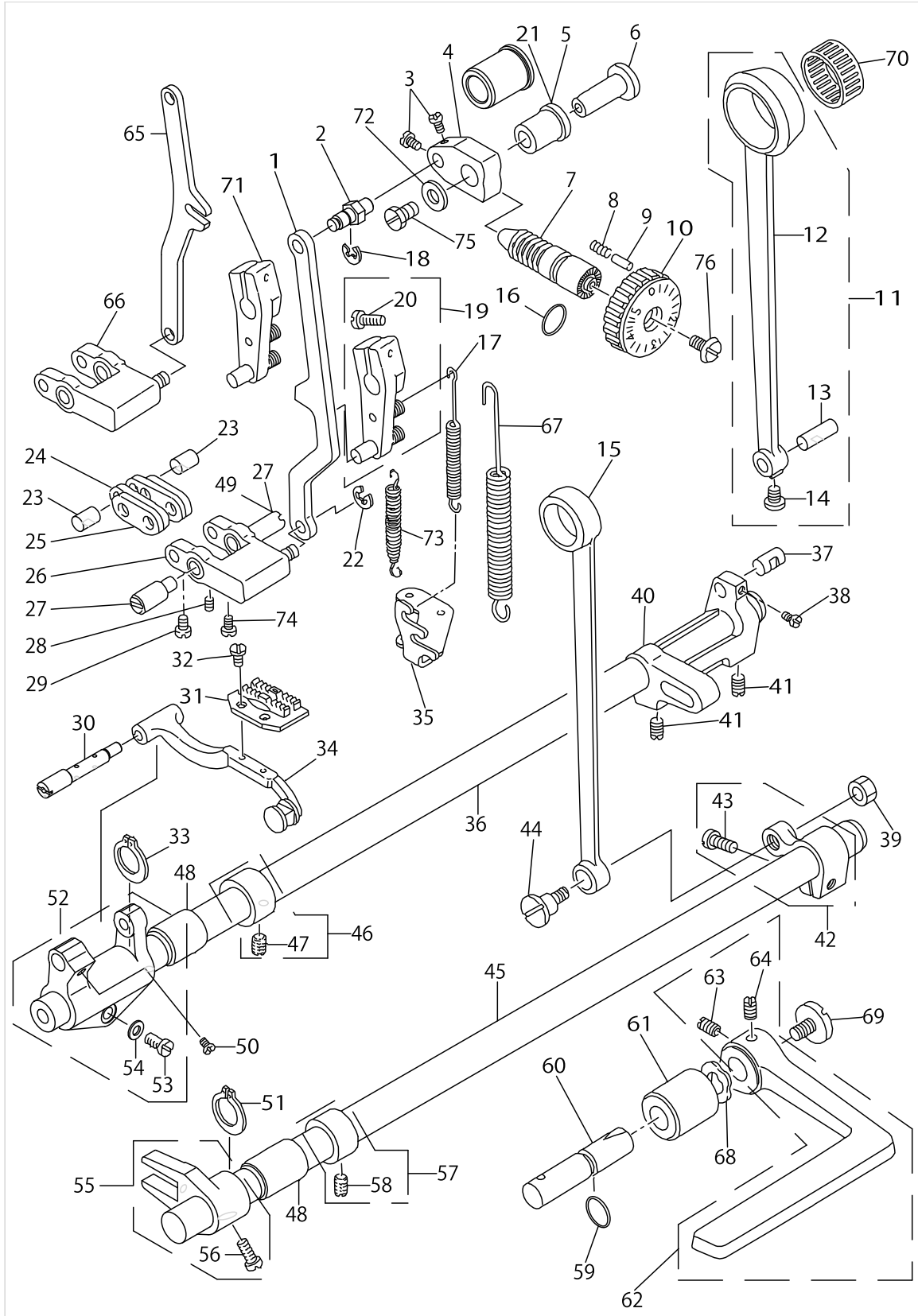


HAND LIFTER COMPONENTS

No.	Supply Code	Parts No.	Replacement	Parts name	Remarks	Choice	Step	Level	Cons	Qty	Rep. QTY
44		11355351		TENSION RELEASE WIRE ASM.						1	
45		11306206		WIRE CABLE HOLDER						1	
46		SS4120615SP		SCREW 3/16-28 L=6						1	
47		SS4150915SP		SCREW 15/64-28 L=9	FOR DMN-- 5420N-7-00					1	
48		SS4110515SP		SCREW 11/64-40 L=5						1	
49		B1501530000		PRESSER BAR						1	
50		NS6620310SP		NUT 3/16-32						2	
51		SD0600322SD		HINGE SCREW D=6 H=3.2						1	



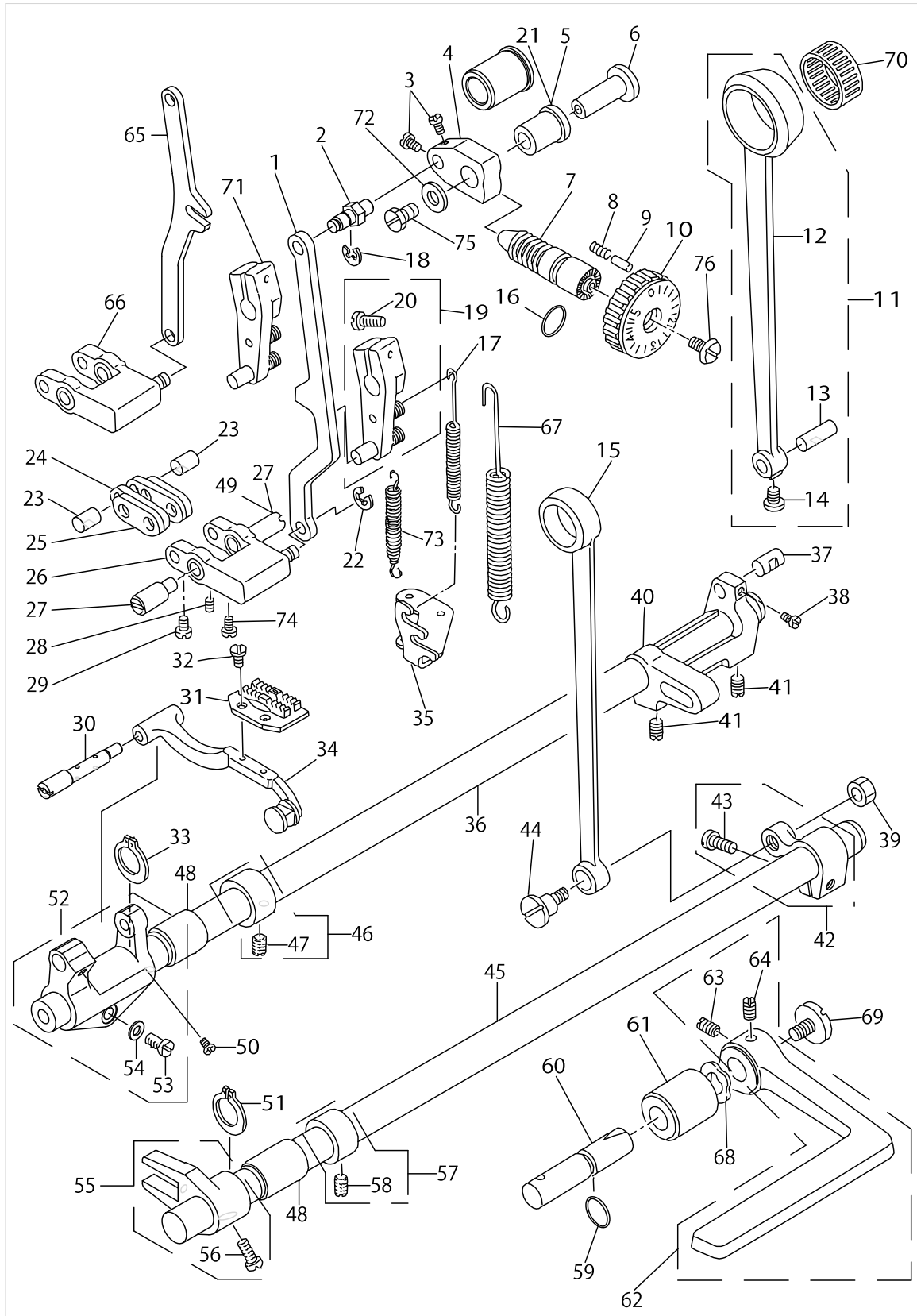
FEED MECHANISM COMPONENTS



FEED MECHANISM COMPONENTS

No.	Supply Code	Parts No.	Replacement	Parts name	Remarks	Choice	Step	Level	Cons	Qty	Rep. QTY
1		11314507		FEED ADJUST ROD	FOR DMN-- 5420N-7-0B,-WB					1	
2		22971204		FEED REGULATOR BASE PIN						1	
3		SS6090560TP		SCREW 9/64-40 L=4.5						2	
4		11303328		FEED REGULATOR BUSHING						1	
5		11009800		FEED REGULATOR BUSHING	FOR DMN-- 5420N-7-0B,-WB					1	
6		11385127		FEED REGULATOR SHAFT						1	
7		22911804		FEED REGULATOR SCREW						1	
8	R	B1148555000	22912109	SPRING						1	1.00
9		22912000		FEED REGULATOR PIN						1	
10		11397007		FEED DIAL						1	
11		40081220		ROCKER SHAFT CO- NNECTING ROD ASM.						1	
12	R	11302411	40081220	ROCKER SHAFT CO- NNECTING ROD				*		1	1.00
13		22911101		WALKING FOOT PIN C				*		1	
14		SS6090620TP		SCREW				*		1	
15		22915003		CONNECTING ROD						1	
16		RO092270200		RUBBER RING						1	
17		11302700		SPRING	FOR DMN-- 5420N-7-0B,-WB					1	
18		RE0500000K0		E-RING						1	
19		22971550		FEED LEVER ARM ASM.	FOR DMN-- 5420N-7-00					1	
20		SS7121410TP		SCREW 3/16-28 L=14				*		1	
21		22911705		FEED REGULATOR BUSHING						1	
22		RE0500000K0		E-RING						1	
23		22910905		WALKING FOOT PIN A						2	
24		22910707		CONNECTING LINK B						2	
25		22910608		CONNECTING LINK A						2	
26		11303161		FEED ADJUST LINK ASM.	FOR DMN-- 5420N-7-00					1	
27		22910806		ADJUST LINK FULCRUM SHAFT A						2	
28		SS8150710TP		SCREW 15/64-28 L=7						1	
29		SS6090620TP		SCREW						2	
30		22940803		FEED BAR SHAFT						1	
31		B1609530D00		FEED DOG D						1	
32		SS4080620TP		SCREW 1/8-44 L=6						2	
33		RC0150001KP		RETAINING RING 13.8						1	
34		22940753		FEED BAR ASM.						1	
35		22970602		FEED SPRING HOOK						1	
36		22912901		FEED ROCKERSHAFT						1	
37		22911002		WALKING FOOT PIN B						1	
38		SS6090620TP		SCREW						1	
39		NS6680410SP		NUT 9/32-28						1	
40	R	11302502	11302551	FEED ROCKER SHAFT CRANK						1	1.00
41		SS8681130SP		SCREW 9/32-28 L=11						2	
42		22915151		FEED ARM COMPL.						1	
43		SS7121610SP		SCREW 3/16-28 L=15.5				*		1	
44		SD1000801SH		HINGE SCREW D=10 H=8						1	

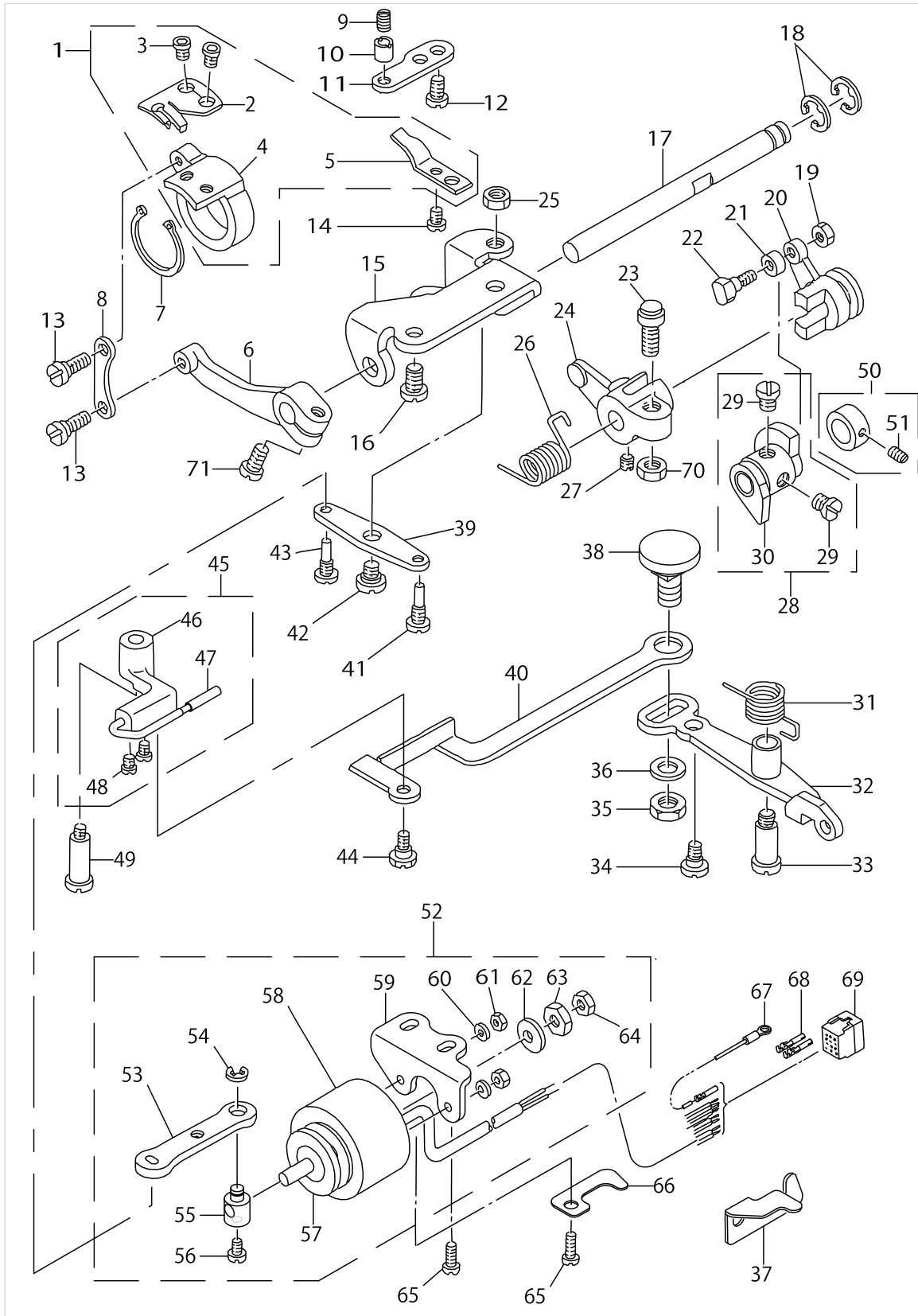
FEED MECHANISM COMPONENTS



FEED MECHANISM COMPONENTS

No.	Supply Code	Parts No.	Replacement	Parts name	Remarks	Choice	Step	Level	Cons	Qty	Rep. QTY
45		22915201		FEED DRIVING SHAFT						1	
46		22904155		MAIN SHAFT THRU-ST COLLAR ASM.						1	
47		SS8660610TP		SCREW 1/4-40 L=6				*		2	
48		22913008		FEED ROCKER SHAFT BUSHING						2	
49		40010395		ADJUSTING LINK F-ULCRUM SHAFT B	FOR DMN--5420N-7-0B,-WB					1	
50		SS7110740TP		SCREW 11/64-40 L=7						1	
51		RC0150001KP		RETAINING RING 13.8						1	
52		22940654		FEED ROCKER ASM.						1	
53		SS7121410TP		SCREW 3/16-28 L=14				*		1	
54		WP0480856SP		WASHER 4.8X8.4X0.8				*		1	
55		22915359		DRIVING SHAFT CRANK ASM.						1	
56	R	SS7111120SP	SS7111120TP	SCREW 11/64-40 L=10.5				*		1	1.00
57		22904155		MAIN SHAFT THRU-ST COLLAR ASM.						1	
58		SS8660610TP		SCREW 1/4-40 L=6				*		2	
59		RO078190100		RUBBER RING						1	
60		22967202		FEED REVERSE SHAFT						1	
61		22912802		FEED LEVER SHAFT BUSHING						1	
62		22912752		FEED LEVER ASM.						1	
63		SM8061010TP		SCREW				*		1	
64		SM8061050TP		SCREW				*		1	
65		22971105		FEED REGULATOR ROD	FOR DMN--5420N-7-00					1	
66		11314267		FEED ADJUST LINK ASM.	FOR DMN--5420N-7-0B,-WB					1	
67		11302619		SPRING						1	
68		WZ1250300K0		WAVED WASHER 12.5X17X0.3	FOR DMN--5420N-7-00					1	
69		SS7620750SP		SCREW 3/16-32 L=6.5	FOR DMN--5420N-7-00					1	
70		B1636581C00		NEEDLE BEARING	SELECTIVE PARTS					1	
71		11311057		FEED REVERSE ARM ASM.	FOR DMN--5420N-7-0B,-WB					1	
72		WP0702026SP		WASHER 7X15X2						1	
73		11305000		SPRING	FOR DMN--5420N-7-00					1	
74		SS6151220SP		SCREW 15/64-28 L=11.5						1	
75		SS9661120CP		SCREW 1/4-40 L=10.5						1	
76		SS6121860SP		SCREW 3/16-28 L=18						1	

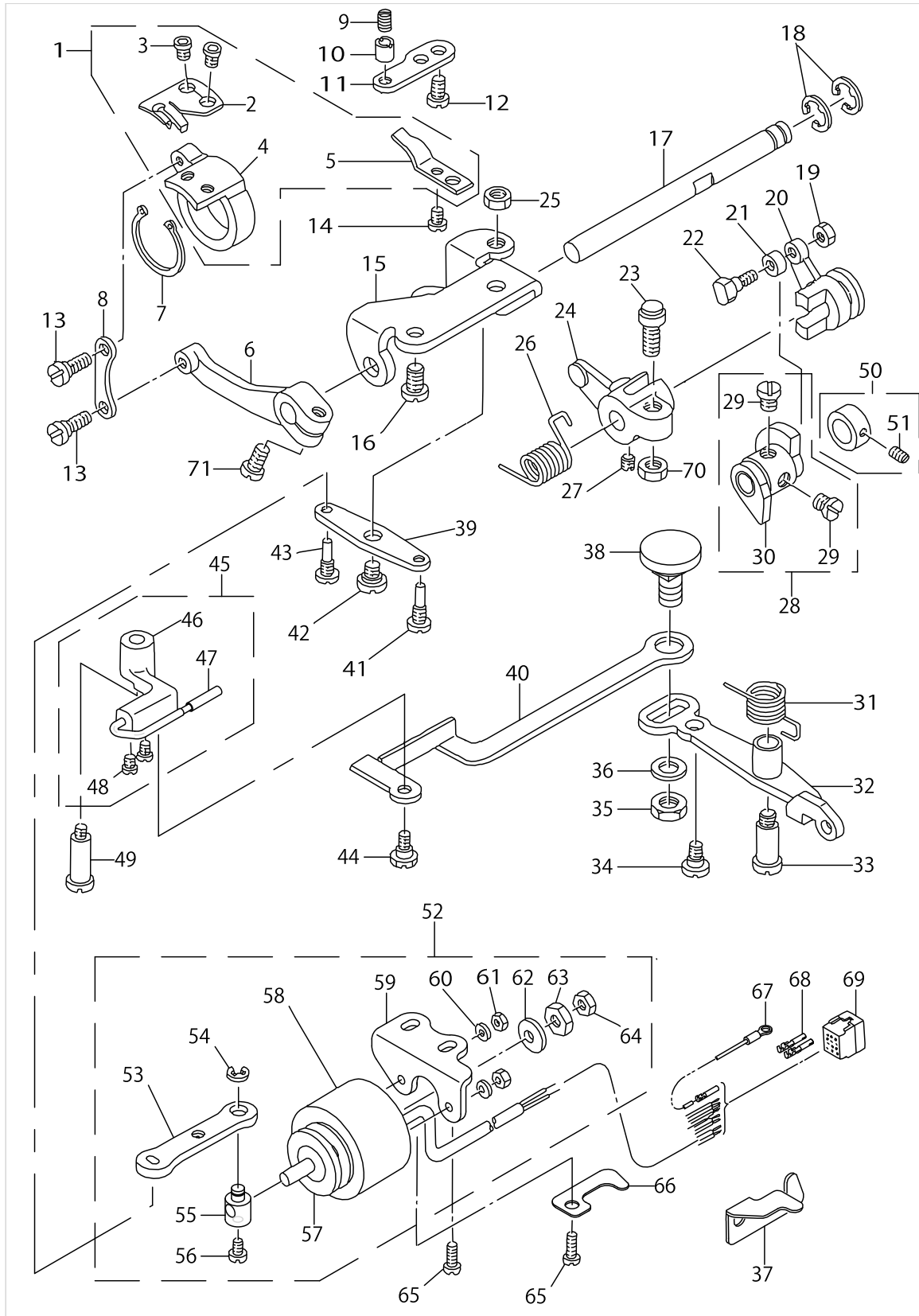
# THREAD TRIMMER MECHANISM COMPONENTS



THREAD TRIMMER MECHANISM COMPONENTS

No.	Supply Code	Parts No.	Replacement	Parts name	Remarks	Choice	Step	Level	Cons	Qty	Rep. QTY
1		40120641		MOVING KNIFE ASM.						1	
2		11351400		MOVING KNIFE				*		1	
3		11351806		SCREW				*		2	
4		11351905		MOVING KNIFE BASE				*		1	
5		11351509		COUNTER KNIFE				*		1	
6	R	11352200	11352259	KNIFE DRIVING						1	1.00
7		RC2651218KP		RETAINING RING						1	
8		11352101		MOVING KNIFE LINK						1	
9		SS8110710SP		SCREW 11/64-40 L=6.5						1	
10		11354602		COLLAR						1	
11		11351608		KNIFE MOUNTING BASE						1	
12		SS4110715SP		SCREW 11/64-40 L=7						2	
13		SD0500251SP		HINGE SCREW D=5 H=2.5						2	
14		SS1090510SP		SCREW 9/64-40 L=5						1	
15		11352408		BASE PLATE						1	
16		SS4150915SP		SCREW 15/64-28 L=9						2	
17		11352309		KNIFE DRIVING SHAFT						1	
18		RE0600000K0		E-RING 6						2	
19		NS6110310SP		NUT 11/64-40						1	
20		11352606		SLIDE ARM						1	
21		11354404		DRIVING ROLLER						1	
22		D2588L8WB00		ROLLER SHAFT						1	
23	R	B14537710A0	40009235	STOP SCREW ASM.						1	1.00
24		11352507		KNIFE DRIVING ARM						1	
25		NS6150310SP		NUT 15/64-28						1	
26		11353406		SPRING						1	
27		SS8660610TP		SCREW 1/4-40 L=6						2	
28		11353653		THREAD TRIMMER CAM ASM.						1	
29		SS6660610TP		SCREW 1/4-40 L=6				*		2	
30	R	11353604	11353653	THREAD TRIMMER CAM				*		1	1.00
31		11353505		SPRING						1	
32		11353059		CLUTCH LEVER ASM.						1	
33		SD0701511TP		HING SCREW D=7 H=15.1						1	
34		SD0600361SP		HINGE SCREW D=6 H=3.6						1	
35		NS6150430SP		NUT 15/64-28						1	
36		WP0621016SH		WASHER						1	
37		22962708		REVERSE FEED CORD PRESSER	FOR DMN-- 5420N-7-0B,-WB					1	
38		22950000		PICKER LINK PIN						1	
39		11352903		CLUTCH PLATE						1	
40		11354107		PICKER LINK						1	
41		11352705		SCREW PIN A						1	
42		SD0640261SP		HINGE SCREW D=3.65 H=2.6						1	
43		11352804		SCREW PIN B						1	
44		SD0630275SP		HINGE SCREW D=6.35 H=2.7						1	
45		11354057		PICKER ARM ASM.						1	
46		11354008		PICKER ARM				*		1	

# THREAD TRIMMER MECHANISM COMPONENTS



THREAD TRIMMER MECHANISM COMPONENTS

No.	Supply Code	Parts No.	Replacement	Parts name	Remarks	Choice	Step	Level	Cons	Qty	Rep. QTY
47		22950356		HOOK THREAD PRESSER ASM.				*		1	
48	R	SS6090510SP	SS6090510TP	SCREW 9/64-40 L=5				*		2	1.00
49		SD0641452TP		HINGE SCREW D=6.35 H=14.5						1	
50		22950950		CAM COLLAR ASM.						1	
51		SS8110520TP		SCREW 11/64-40 L=4.5				*		1	
52		11355054		SOLENOID UNIT						1	
53		11353307		CLUTCH LINK				*		1	
54		RE0500000K0		E-RING				*		1	
55		22951008		SOLENOID PIN				*		1	
56		SS6110710TP		SCREW 11/64-40 L=6.5				*		1	
57		11043205		SOLENOID RUBBER A				*		1	
58	R	11043106	11043163	THREAD TRIMMER SOLENOID				*		1	1.00
59		22951404		SOLENOID BASE				*		1	
60		WP0450000SD		WASHER 4.5X8X0.5				*		2	
61		NM6040000SN		NUT M4				*		2	
62		11043304		SOLENOID RUBBER				*		1	
63		NS6660410SH		NUT				*		1	
64		NS6660430SP		NUT 1/4-40				*		1	
65		SS4151215SP		SCREW 15/64-28 L=12						2	
66		22924807		PIPE HOLDER LOWER						1	
67		22951552		GROUND WIRE ASM.						1	
68		HK03464000B		PIN CONTACT	FOR DMN-- 5420N-7-00					2	
69		HK034610140		HOUSING 14P						1	
70		NS6150430SP		NUT 15/64-28						1	
71		SS6121220TP		SCREW 3/16-28 L=11.5						1	

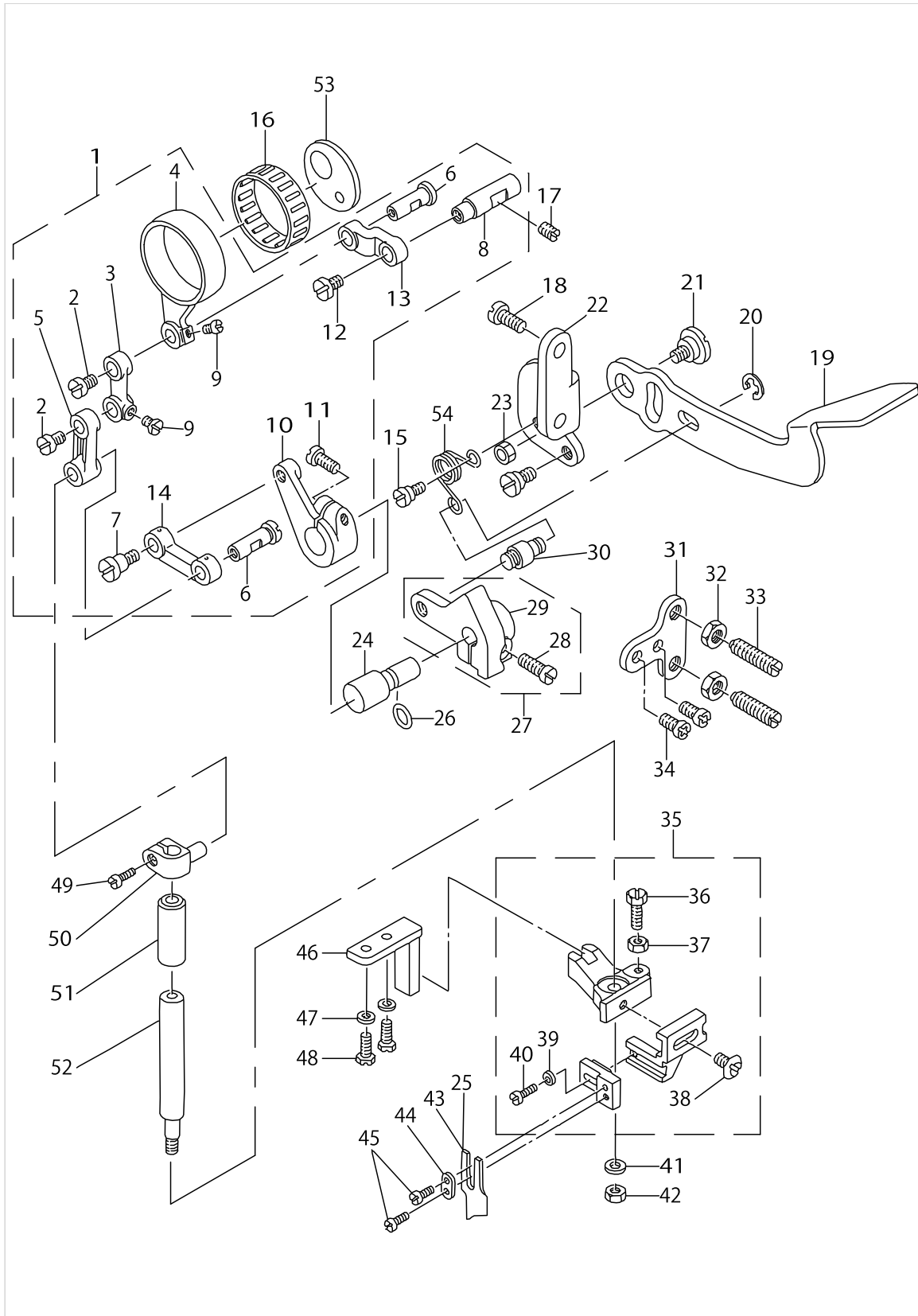




KNIFE COMPONENTS

No.	Supply Code	Parts No.	Replacement	Parts name	Remarks	Choice	Step	Level	Cons	Qty	Rep. QTY
1		11356953		KNIFE ROD ASM.						1	
2		SS7110830SP		SCREW 11/64-40 L=7.5				*		2	
3		11357308		KNIFE DRIVING ROD A				*		1	
4		11356904		KNIFE DRIVING ROD				*		1	
5		11357407		KNIFE DRIVING ROD B				*		1	
6		11357209		PIN				*		2	
7		SD0640604TP		HING SCREW D=6.35 H=6				*		1	
8		11357001		ROD LINK SHAFT				*		1	
9		SS7090520TP		SCREW 9/64-40 L=4.5				*		2	
10		11357704		LINK SUPPORT ARM				*		1	
11		SS6121220TP		SCREW 3/16-28 L=11.5				*		1	
12		SS7110830SP		SCREW 11/64-40 L=7.5				*		1	
13		11357100		KNIFE DRIVING ROD LINK				*		1	
14		11357506		KNIFE DRIVING LINK				*		1	
15		SD0790431SP		HINGE SCREW D=7.94 H=4.3						1	
16		B412352200A		NEEDLE BEARING	SELECTIVE PARTS(A~C)					1	
17		SS8151150TP		SCREW 15/64-28 L=10.5						1	
18		SS4150915SP		SCREW 15/64-28 L=9						2	
19		11358207		KNIFE LEVER						1	
20		RE0500000K0		E-RING						1	
21		SD0920321SP		HINGE SCREW D=9.20 H=3.2						1	
22		11358108		KNIFE LEVER BASE						1	
23		NS6160520SP		NUT 1/4-24						1	
24		11357803		KNIFE SET LEVER SHAFT						1	
25		B4121522000		KNIFE	FOR USE IN JAPAN					1	
26		RO048190100		RUBBER RING						1	
27		11357951		KNIFE SHIFTING BASE ASM.						1	
28		SS6121220TP		SCREW 3/16-28 L=11.5				*		1	
29	R	11357902	11357951	KNIFE SET LEVER BASE				*		1	1.00
30		B4124530000		SET LEVER PIN						1	
31		11358306		KNIFE LEVER STOPPER						1	
32		NS6150310SP		NUT 15/64-28						2	
33		SS8152080SP		SCREW 15/64-28 L=19.5						2	
34		SS4120915SP		SCREW 3/16-28 L=9						2	
35		B41175300A0		KNIFE MOUNTING BASE ASM.						1	
36		SS9121410TP		SCREW 3/16-28 L=14				*		1	
37		NS6120310SP		NUT 3/16-28				*		1	
38		SS6110810TP		SCREW 11/64-40 L=8				*		1	
39		WP0371026SD		WASHER 3.7X7X1				*		1	
40		SS6090910SP		SCREW 9/64-40 L=9				*		1	
41		WP0501016SD		WASHER 5X10.5X1						1	
42		NS6120480SP		NUT 3/16-28						1	
43		B4145530B0A		KNIFE						1	
44		B4122522000		WASHER						1	
45		SS4080515SP		SCREW 1/8-44 L=5						2	
46		B4120530000		KNIFE MOUNTING BASE GUIDE						1	

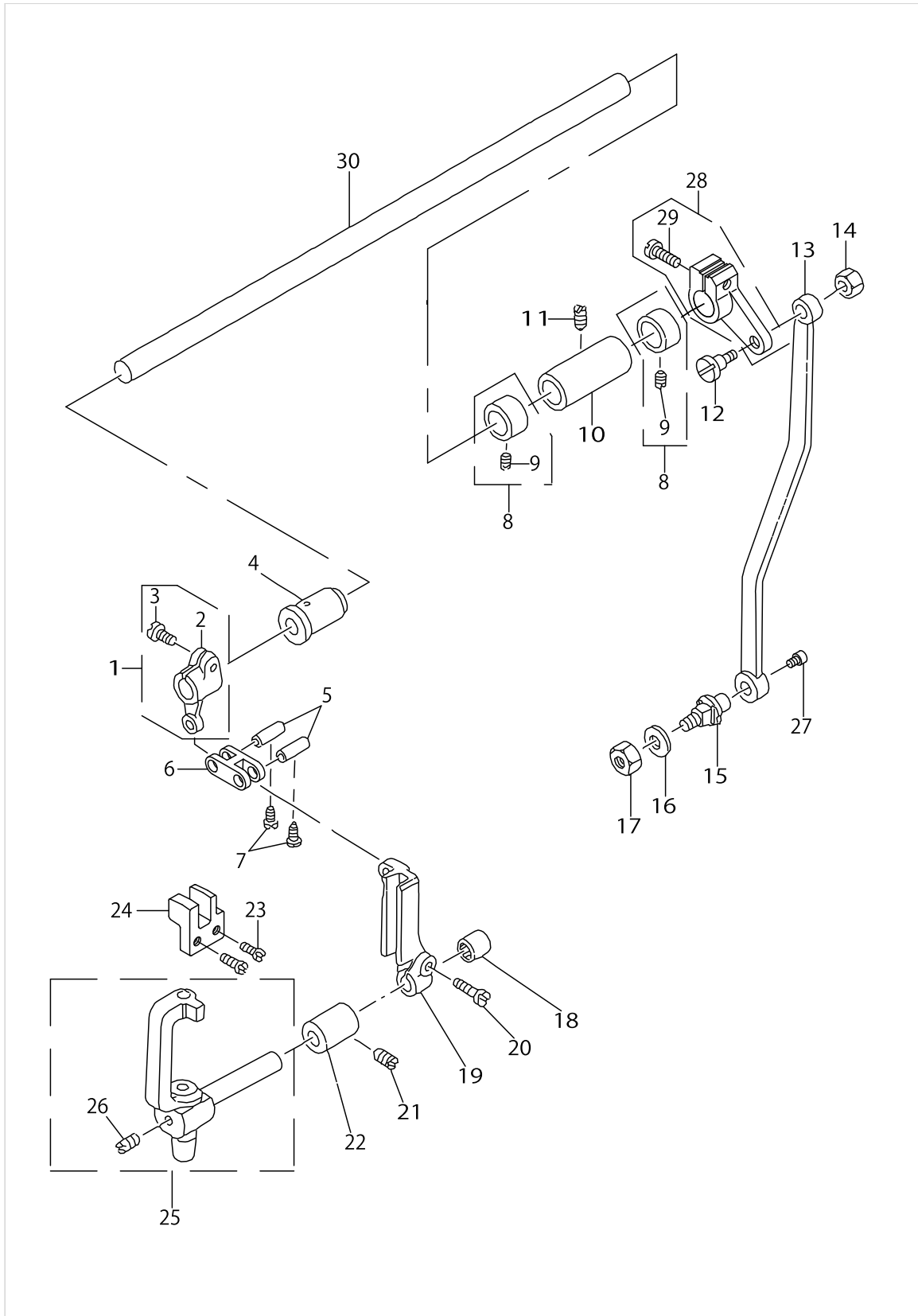
# KNIFE COMPONENTS



KNIFE COMPONENTS

No.	Supply Code	Parts No.	Replacement	Parts name	Remarks	Choice	Step	Level	Cons	Qty	Rep. QTY
47		WP0480856SP		WASHER 4.8X8.4X0.8						2	
48		SS9121010TP		SCREW						2	
49		SS6090810TP		SCREW 9/64-40 L=7.5						1	
50	R	B4115530000	B41155300AA	KNIFE DRIVING STUD CONNECTION						1	1.00
51		B4116530000		BUSHING						1	
52		B4114530000		KNIFE DRIVING STUD						1	
53		11371705		THRUST PLATE						1	
54		B4126530000		SPRING						1	

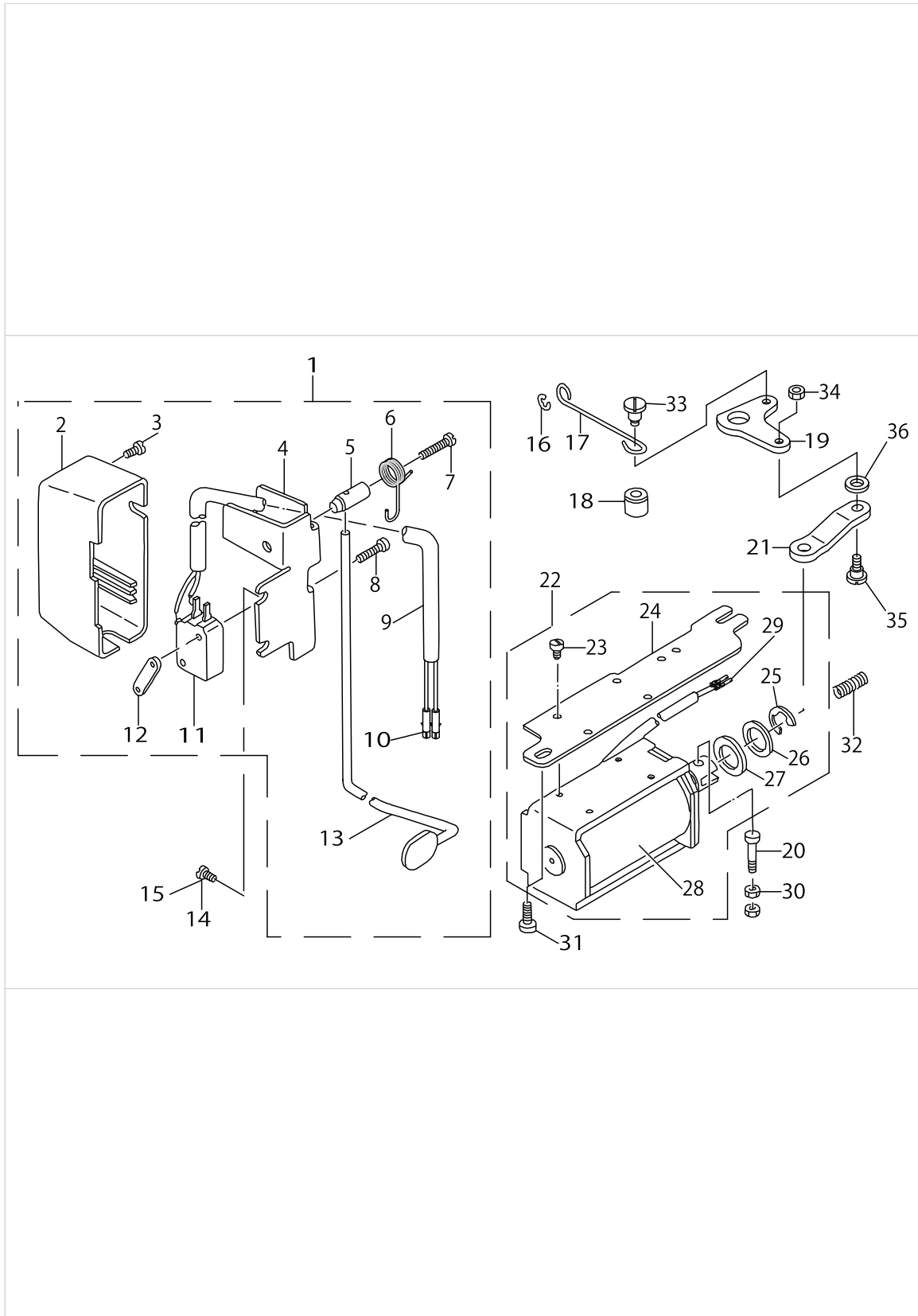
# NEEDLE BAR FRAME COMPONENTS



NEEDLE BAR FRAME COMPONENTS

No.	Supply Code	Parts No.	Replacement	Parts name	Remarks	Choice	Step	Level	Cons	Qty	Rep. QTY
1		11304052		SHAFT ARM ASM. (FRONT)						1	
2	R	11304003	11304052	DRIVING CRANK FRONT				*		1	1.00
3		SS6121220TP		SCREW 3/16-28 L=11.5				*		1	
4		11211000		ROCK SHAFT BUSHING FRONT						1	
5		B1412352B00		NEEDLE BAR LINK PIN	SELECTIVE PARTS					2	
6		B2906415000		DRIVING LINK						1	
7		SS6090660TP		SCREW 9/64-40 L=6						2	
8		CS120101BSH		THRUST COLLAR ASM.						2	
9		SS8660410SP		SCREW 1/4-40 L=4.2				*		4	
10		11210903		ROCK SHAFT BUSHING REAR						1	
11		SS8120740SP		SCREW 3/16-28 L=7						1	
12		SD0790501SP		HINGE SCREW D=7.94 H=5						1	
13		11304201		CONNECTING ROD						1	
14		NS6150310SP		NUT 15/64-28						1	
15		11304300		CONNECTING ROD SHAFT						1	
16		WP0621016SD		WASHER 6.2X13X1						1	
17		NS6150430SP		NUT 15/64-28						1	
18		SB309000400		BEARING						1	
19		11303807		SLIDE BLOCK GUIDE						1	
20		SS6121610SP		SCREW 3/16-28 L=15.5						1	
21		SS8120740SP		SCREW 3/16-28 L=7						1	
22		11214509		BUSHING						1	
23		SS6090810SP		SCREW 9/64-40 L=7.5						2	
24		11303906		NEEDLE BAR FRAME GUIDE						1	
25		11303567		NEEDLE ROD ROCK- ING BASE ASM.						1	
26		SS8110310SP		SCREW 11/64-40 L=2.8				*		1	
27		SS6110640SP		SCREW 11/64-40 L=6						1	
28		11304151		SHAFT ARM ASM. (REAR)						1	
29	R	SS7121410SP	SS7121410TP	SCREW 3/16-28 L=14				*		1	1.00
30		11304409		CONNECTING SHAFT						1	

# AUTOMATIC REVERSE FEED COMPONENTS

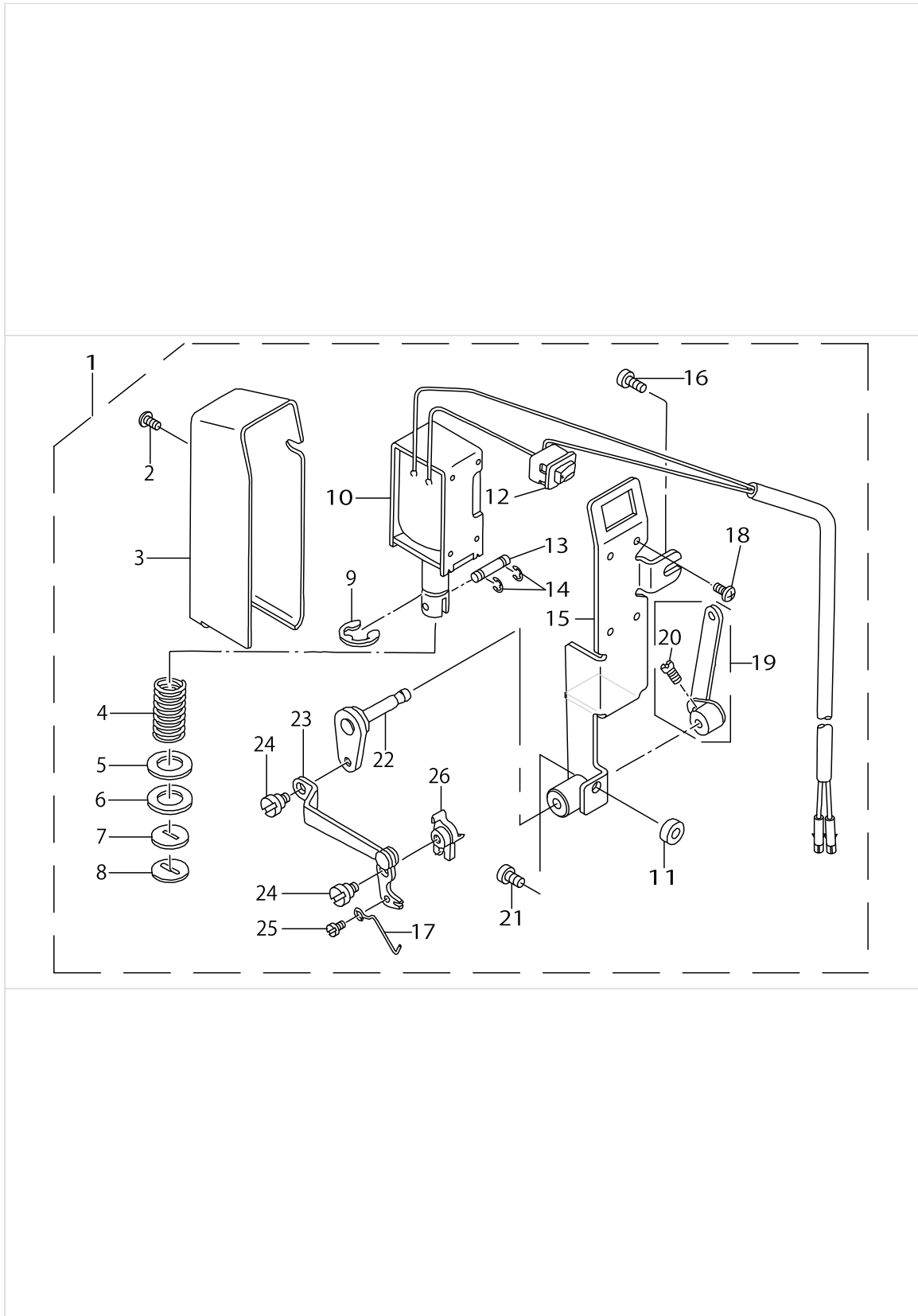


AUTOMATIC REVERSE FEED COMPONENTS

No.	Supply Code	Parts No.	Replacement	Parts name	Remarks	Choice	Step	Level	Cons	Qty	Rep. QTY
1		11362357		REVERSE FEED SWITCH ASM.						1	
2		22954606		REVERSE FEED SWITCH COVER				*		1	
3		SM4040655SP		SCREW M4 L=6				*		1	
4		22954101		REVERSE FEED SWITCH BASE				*		1	
5		22954200		REVERSE FEED SWITCH SHAFT				*		1	
6		22954309		REVERSE FEED SWITCH SPRING				*		1	
7		SM4041655SP		SCREW M4 L=16				*		1	
8		SM4031501SC		SCREW M3 L=15				*		2	
9		HW500070000		2-CORE CABTYRE CORD				*		1.31	
10		HK03464000B		PIN CONTACT				*		2	
11		HA001900000		MICROSWITCH				*		1	
12	R	11102308	22954408	MICRO SWITCH PLATE				*		1	1.00
13		11364700		REVERSE FEED SWITCH LEVER				*		1	
14		SS4120615SP		SCREW 3/16-28 L=6	FOR DMN-- 5420N-7-0B					1	
15		SS4120915SP		SCREW 3/16-28 L=9						1	
16		RE0500000KP		E-RING 5						1	
17		11101300		REVERSE FEED CO- NECTING SHAFT						1	
18		22962609		REVERSE FEED BASE COLLAR						1	
19		11101508		REVERSE FEED LINK						1	
20		22962906		PLUNGER ARM PIN						2	
21	R	11101607	22962500	SOLENOID CONNECTING LINK						1	1.00
22	R	11372356	40108026	SOLENOID INSTALLING PLATE						1	1.00
23		SS7110740TP		SCREW 11/64-40 L=7				*		4	
24		11372109		SOLENOID INSTALLING PLATE				*		1	
25		RE1200000K0		E-RING 12				*		1	
26		WP1703001SC		WASHER 17X30X3				*		1	
27		D2468555B00		RUBBER PLUNGER				*		1	
28	R	11228400	40108027	REVERSE FEED SOLENOID				*		1	1.00
29		HK03464000B		PIN CONTACT				*		2	
30		NS6110420SP		NUT 11/64-40						2	
31		SS4151215SP		SCREW15/64-28L=12						1	
32		11217601		WALKING FOOT SPRING						1	
33		SD0700451TP		HINGE SCREW D=7 H=4.5						1	
34		NS6110420SP		NUT 11/64-40						1	
35		SD0700711TP		HINGE SCREW D=7 H=7.1						1	
36		WP0722316SH		WASHER						1	



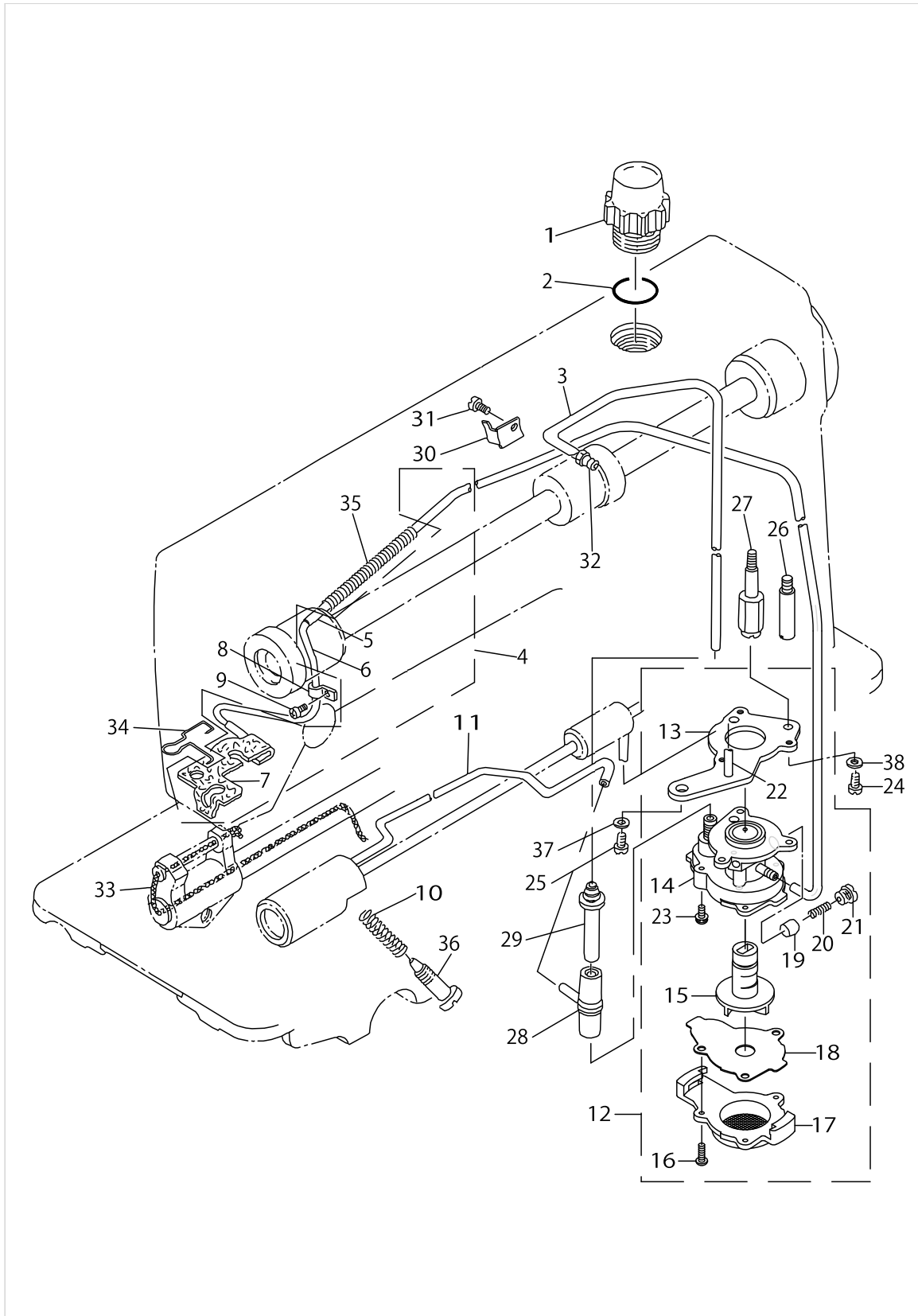
# WIPER COMPONENTS



WIPER COMPONENTS

No.	Supply Code	Parts No.	Replacement	Parts name	Remarks	Choice	Step	Level	Cons	Qty	Rep. QTY
1		11362456		WIPER ASM.						1	
2		SL4030631SC		SCREW M3X6				*		1	
3		11258001		WIPER COVER				*		1	
4		11233400		SPRING				*		1	
5		WP1221016SP		WASHER				*		1	
6		11234408		SOLENOID RUBBER				*		1	
7		11233301		STOPPER RUBBER				*		1	
8		11234606		STOPPER RUBBER WASHER				*		1	
9		RE0900000K0		E-RING 9				*		1	
10		40112705		WIPER SOLENOID ASM.				*		1	
11	R	13522206	26228601	COLLAR				*		1	1.00
12		HA00600000A		SWITCH				*		1	
13		11234507		PLUNGER CONNECTING PIN				*		1	
14		RE0300000K0		E-RING 3				*		2	
15		11233053		WIPER INSTALLING BASE ASM.				*		1	
16		SS4120915SP		SCREW 3/16-28 L=9				*		1	
17		11359700		WIPER				*		1	
18		SL4030641SE		SCREW				*		4	
19		11233251		WIPER LEVER B ASM.				*		1	
20		SS6110710TP		SCREW 11/64-40 L=6.5				*		2	
21		SS4121415SP		SCREW 3/16-28 L=14				*		1	
22		11360153		WIPER LEVER ASM. A				*		1	
23		11359957		WIPER ARM ASM.				*		1	
24		SD0550212TP		HINGE SCREW D=5.5 H=2.1				*		2	
25		SS7090410SP		SCREW 9/64-40 L=3.5				*		1	
26		11359809		WIPER BASE				*		1	

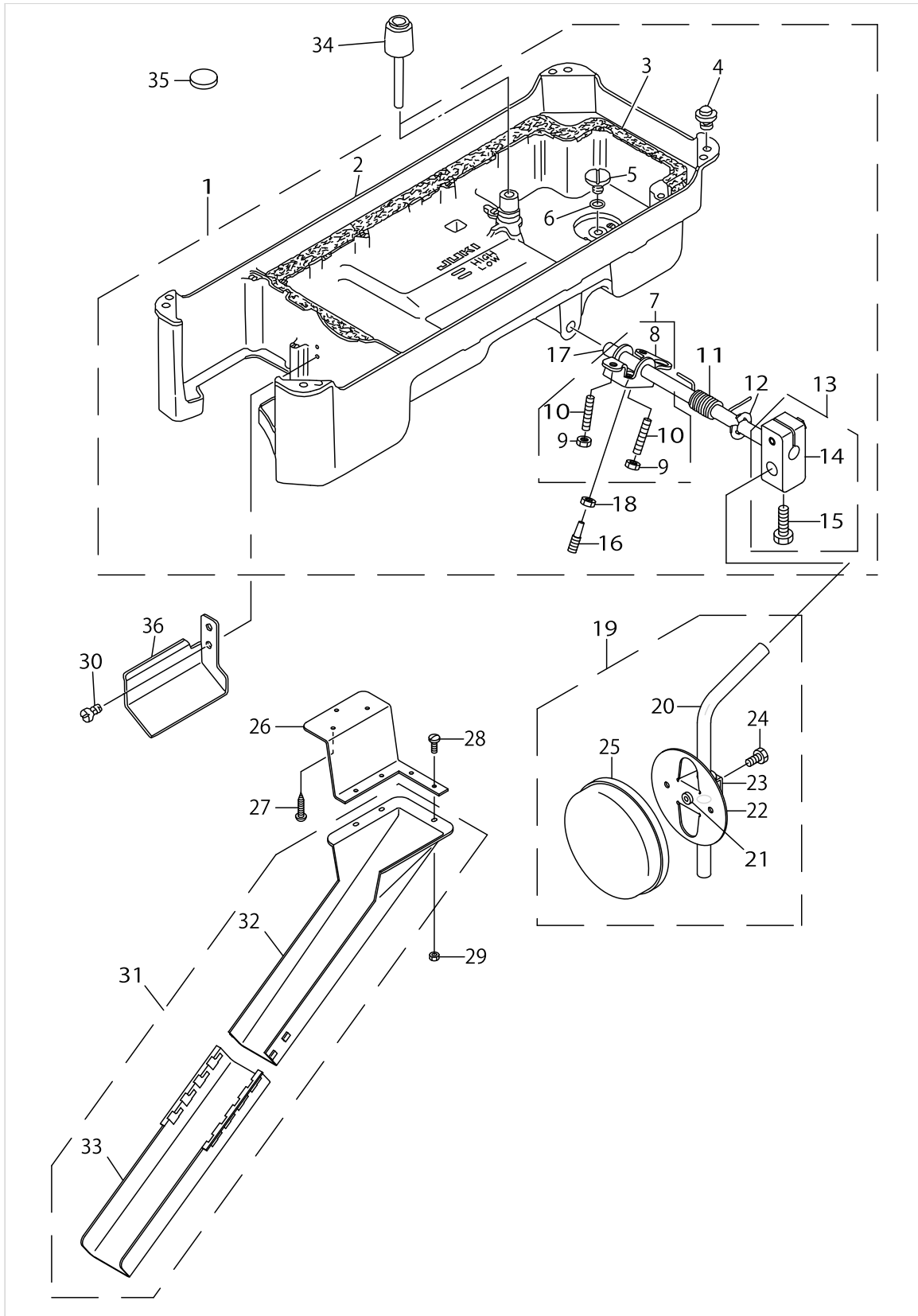
OIL LUBRICATION COMPONENTS



OIL LUBRICATION COMPONENTS

No.	Supply Code	Parts No.	Replacement	Parts name	Remarks	Choice	Step	Level	Cons	Qty	Rep. QTY
1	R	22947006	22924708	OIL SIGHT WINDOW						1	1.00
2		RO195240100		RUBBER RING						1	
3		BT0600402EA		OIL TUBE						.27	
4		11371259		OIL RETURN TUBE ASM.						1	
5		BT0500300EA		OIL TUBE				*		0.54	
6		11371200		OIL RETURN TUBE				*		1	
7		11371358		OIL FELT ASM.				*		1	
8		B3538112000		OIL RETURN TUBE HOLDER						1	
9		SS4120615SP		SCREW 3/16-28 L=6						1	
10		22924906		OIL REGULATOR SCREW SPRING						1	
11		11307352		OIL WICK ASM.						1	
12		22923056		OIL PUMP ASM.						1	
13	R	22923312	11392057	OIL PUMP INSTALLING BASE		A	DLD5430	*		1	1.00
13	R	22923312	11404555	OIL PUMP INSTALLING BASE		B	DDL5600/- 8100e, DU1181	*		1	1.00
13	R	22923312	22923056	OIL PUMP INSTALLING BASE		C	DDL8700/- 8300/8500- /900A, DM- N5420/5400	*		1	1.00
14	R	22923015	22923056	OIL PUMP				*		1	1.00
15		22923700		IMPELLER				*		1	
16		SE4301041SR		SCREW D=3 L=10				*		3	
17		22923205		PUMP BODY COVER				*		1	
18		22923809		PUMP BODY SUPPORT PLATE				*		1	
19		22923403		PLUNGER				*		1	
20		22923601		PLUNGER SPRING				*		1	
21		22923502		PLUNGER SCREW				*		1	
22		22923908		HOOK DRIVING SH- AFT OILING PIPE				*		1	
23		SL4030851SF		SCREW M3 L=8				*		3	
24		SS6111010TP		SCREW 11/64-40 L=9.5						1	
25		SS4150915SP		SCREW 15/64-28 L=9						1	
26		22924005		PUMP BODY STRUT	FOR DMN-- 5420N-7-00					1	
27		11231503		OIL PUMP SUPPORT	FOR DMN-- 5420N-7-0B,-WB					1	
28		22924609		RUBBER JOINT						1	
29		11221504		OIL TUBE JOINT						1	
30		11222007		HOLDER						1	
31		SS6080340SP		SCREW 1/8-44 L=2.9						1	
32		SQ1150501SD		CONNECTING SCREW						1	
33		CQ252000000		OIL WICK						.3	
34		11356201		OIL FELT PRESSER						1	
35		B3404122000		SPRING						1	
36		22925002		OIL REGULATOR SCREW						1	
37		WS0651310KP		SPRING WASHER 6.5X11X1.3	FOR DMN-- 5420N-7-0B,-WB					1	
38		WS0451040KP		SPRING WASHER 4.5X8.5X1	FOR DMN-- 5420N-7-0B,-WB					1	

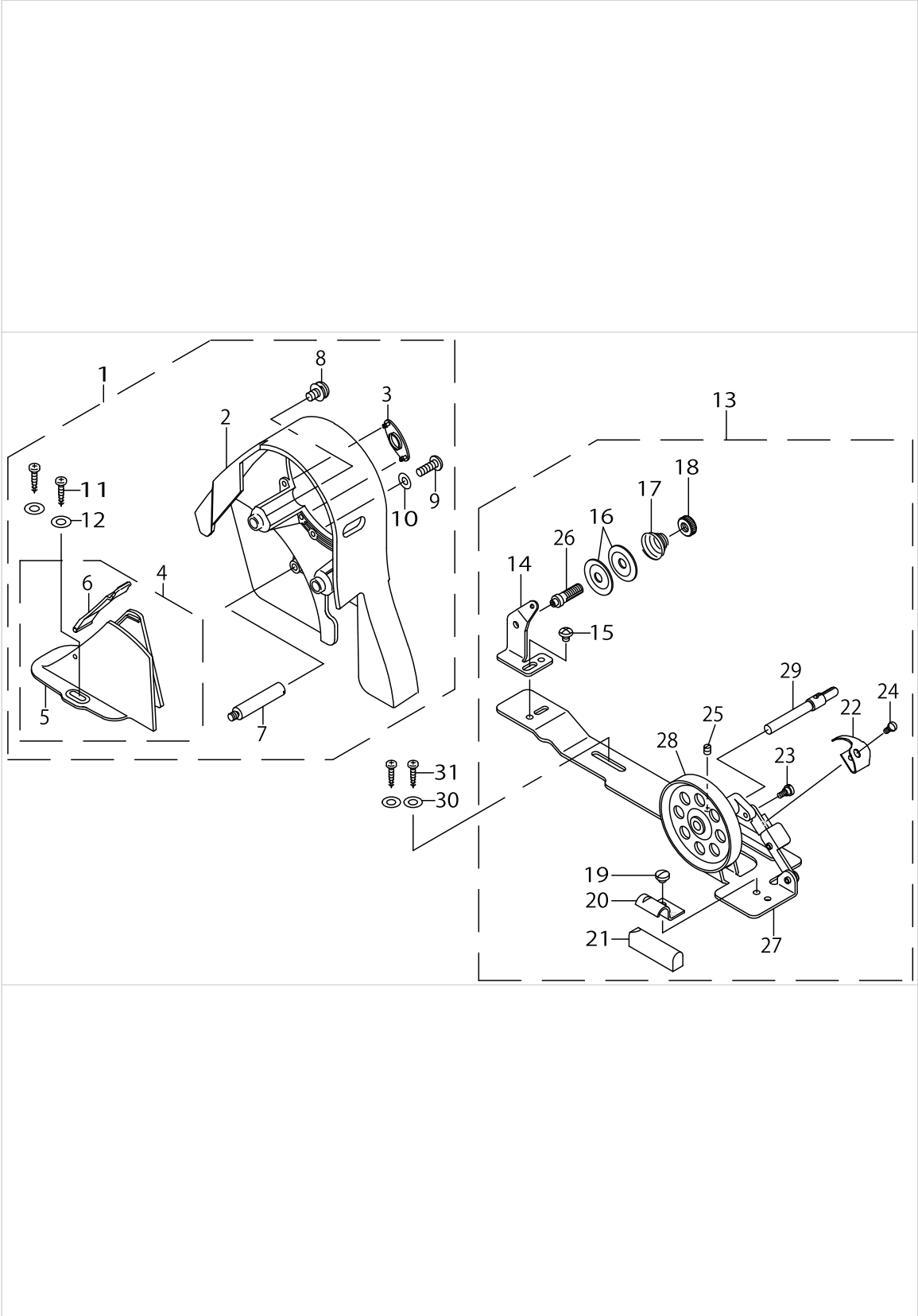
OIL RESERVOIR COMPONENTS



OIL RESERVOIR COMPONENTS

No.	Supply Code	Parts No.	Replacement	Parts name	Remarks	Choice	Step	Level	Cons	Qty	Rep. QTY
1		11360757		OIL RESERVOIR ASM.						1	
2	R	11360708	11360757	OIL RESERVOIR				*		1	1.00
3		11023108		GASKET				*		1	
4		11047107		RUBBER CUSHION				*		4	
5		SS6700710SH		SCREW 5/16-24 L=7				*		1	
6		RO098240100		RUBBER RING				*		1	
7		22932156		KNEE LIFTER ROTATION ARM ASM.				*		1	
8	R	22932107	22932156	KNEE LIFTER ROTATION ARM				*		1	1.00
9		NM6060001SE		NUT M6				*		2	
10		SM8063012TR		SCREW M6 L=30				*		2	
11		22932206		SPRING				*		1	
12		RE1000000K0		E-RING 10				*		1	
13		22932453		BRACKET ASM.				*		1	
14	R	22932404	22932453	BRACKET				*		1	1.00
15		22934707		BRACKET SCREW				*		2	
16		40101720		SCREW_M6				*		1	
17		22932305		KNEE PRESS CROSS SHAFT				*		1	
18		NM6060001SE		NUT M6				*		1	
19		22934251		KNEE PAD PLATE ASM.				*		1	
20		22934608		KNEE PAD UPRIGHT SHAFT				*		1	
21		22934400		KNEE PAD PLATE RUBBER				*		1	
22		22934202		KNEE PAD PLATE				*		1	
23		22934301		KNEE PAD PLATE SUPPORT				*		1	
24		SM9061203SE		SCREW M6 L=12				*		1	
25		22934509		KNEE PAD PLATE COVER				*		1	
26		40064815		WASTE MATERIAL CHUTE HOLDER				*		1	
27	R	SK3412000SC	SK3412000SE	WOOD SCREW D=4.1 L=20				*		3	1.00
28		SS7091110TP		SCREW 9/64-40 L=10.5				*		3	
29		NS6090310SP		NUT 9/64-40				*		3	
30		SS4110715SP		SCREW 11/64-40 L=7				*		2	
31		40056521		WASTE MATERIAL CHUTE HOLDER ASM.				*		1	
32		40053719		CLOTH WASTE CHUTE UPPER				*		1	
33		12341806		CLOTH WASTE CHUTE				*		1	
34		22931703		KNEE LIFTER PUSH ROD				*		1	
35		B8228125000		OIL RESERVOIR MAGNET				*		1	
36		11361003		OIL PUSH GUIDE				*		1	

BELT COVER & BOBBIN WINDER COMPONENTS

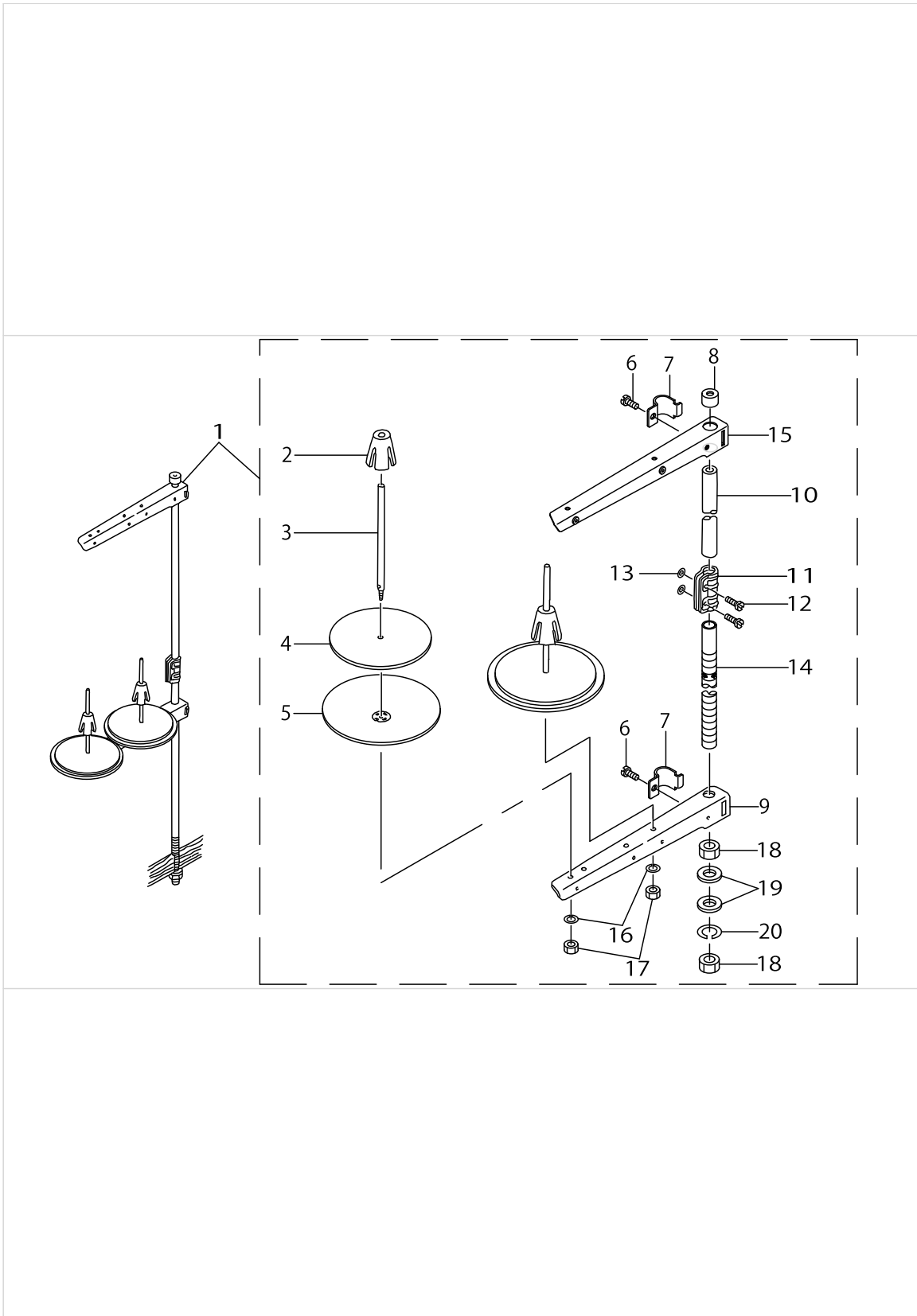


BELT COVER & BOBBIN WINDER COMPONENTS

No.	Supply Code	Parts No.	Replacement	Parts name	Remarks	Choice	Step	Level	Cons	Qty	Rep. QTY
1		22933451		BELT COVER ASM.						1	
2	R	22933402	22933451	BELT COVER A				*		1	1.00
3		22933501		BELT COVER A CAP				*		1	
4		22933659		BELT COVER B COMPL.				*		1	
5		22933600		BELT COVER B				*		1	
6	R	22933758	22933659	BELT COVER B LID ASM.				*		1	1.00
7		22933907		BELT COVER STRUT				*		1	
8	R	22934004	11025202	SET SCREW				*		2	1.00
9		SS4121415SP		SCREW 3/16-28 L=14				*		1	
10		WP0501016SD		WASHER 5X10.5X1				*		1	
11	R	SK3412000SC	SK3412000SE	WOOD SCREW D=4.1 L=20				*		2	1.00
12		WP0450826SC		WASHER 4.5X10X0.8				*		2	
13		22927354		BOBBIN WINDER COMPL.						1	
14	R	22928501	11078250	THREAD TENSION POST BASE				*		1	1.00
15		SS4110515SP		SCREW 11/64-40 L=5				*		1	
16	R	22928907	22921506	THREAD TENSION DISK				*		2	1.00
17		22929004		THREAD TENSION SPRING				*		1	
18		22928808		NUT				*		1	
19		SS7110350SP		SCREW 11/64-40 L=3.5				*		1	
20	D	22928402		CONTROL RUBBER HOLDING PLATE				*		1	
21		22928303		CONTROL RUBBER				*		1	
22		22928105		BOBBIN PRESSER				*		1	
23		SD0490261SP		HINGE SCREW D=4.9 H=2.6				*		1	
24		SS7081310SP		SCREW 1/8-44 L=12.5				*		1	
25	R	SS8110510SP	SS8110520TP	SCREW 11/64-40 L=5				*		1	1.00
26	R	22928709	11078250	THREAD TENSION POST				*		1	1.00
27	R	22927305	22927354	BOBBIN WINDER BASE				*		1	1.00
28		22927404		BOBBIN WINDER				*		1	
29		22927602		BOBBIN WINDER SPINDLE				*		1	
30		WP0450826SC		WASHER 4.5X10X0.8						2	
31	R	SK3412000SC	SK3412000SE	WOOD SCREW D=4.1 L=20						2	1.00



# THREAD STAND COMPONENTS



THREAD STAND COMPONENTS

No.	Supply Code	Parts No.	Replacement	Parts name	Remarks	Choice	Step	Level	Cons	Qty	Rep. QTY
1	R	22930358	40096354	THREAD STAND ASM.						1	1.00
2	R	22931109	40085791	SPOOL RETAINER				*		2	1.00
3	R	22931000	40085790	SPOOL PIN				*		2	1.00
4		22930903		SPOOL REST CUSHION				*		2	
5		22930804		SPOOL REST				*		2	
6		SM6061610SC		SCREW M6 L=16				*		2	
7	R	22930705	40096354	THREAD GUIDE ARM JOINT				*		2	1.00
8		22931406		SPOOL REST ROD RUBBER CAP				*		1	
9	R	22930507	40096354	SPOOL REST ARM				*		1	1.00
10	R	22930408	40096354	SPOOL REST ROD UPPER				*		1	1.00
11	R	22931307	40096354	SPOOL REST ROD JOINT				*		1	1.00
12		SM4051405SE		SCREW M5 L=14				*		2	
13		NM6050001SE		NUT M5				*		2	
14	R	22930309	40096354	SPOOL REST ROD LOWER				*		1	1.00
15	R	22930556	40096354	THREAD STANDING ARM ASM.				*		1	1.00
16		WS0510002KN		SPRING WASHER				*		2	
17		NM6050001SE		NUT M5				*		2	
18		NM6160511SE		NUT M16X1.5				*		2	
19		WP1612616SE		WASHER 16.1X30X2.6				*		2	
20	R	WS1643202KR	WP1612616SE	SPRING WASHER		A		*		1	2.00
20	R	WS1643202KR	40085796	SPRING WASHER		A		*		1	2.00

TABLE OF EXCHANGING GAUGE PARTS (1)

Specifications of the sub-gauge	Gauge width	1		2		3		4		5		Type	Note
		Throat plate 針板		Throat plate cover (asm) accessory 針板蓋(組) *付属品		Gauge ゲージ		Throat plate chip guard 針板布屑カバー		Throat plate chip guard accessory 針板布屑ガイド *付属品			
サブゲージ仕様	サブゲージ巾	Ref.no Part no		Ref.no Part no		Ref.no Part no		Ref.no Part no		Ref.no Part no		仕様	備考
		CA□	5/64" (2.0mm)	1	11346004	14	B11155310AD	27	B1190530C0A	40	11346905		
D□	1/8" (3.2mm)	2	11346004	15	B11155300AD	28	B1190530D00	41	11346905	54	11347002	Standard type 標準仕様	
DA□	7/64" (2.8mm)	3	11346004	16	B11155300AD	29	B1190530D0A	42	11346905	55	11347002	Spare parts type 補用パーツ仕様	
DC□	1/8" (3.2mm)	4	11346004	17	B11155300AD	30	B1190530D0C	43	11346905	56	11347002	Spare parts type 補用パーツ仕様	Gauge of chain-off thread 空環用ゲージ
DD□	1/8" (3.2mm)	5	11346004	18	B11155300AD	31	B1190530D0B	44	11346905	57	11347002	Spare parts type 補用パーツ仕様	B11100120AA(B111001200A) Exclusive slide plate 送り板
E□	5/32" (4.0mm)	6	11346004	19	B11155300AF	32	B1190530E00	45	11346905	58	11347002	Special type 特別仕様	
F□	3/16" (4.8mm)	7	11346004	20	B11155300AF	33	B1190530F00	46	11346905	59	11347002	Special type 特別仕様	
G□	7/32" (5.6mm)	8	11346004	21	B11155300AF	34	B1190530G00	47	11347101	60	11347200	Special type 特別仕様	
H□	1/4" (6.4mm)	9	11346103	22	B11155300AF	35	B1190530H00	48	11347101	61	11347200	Special type 特別仕様	
J□	9/32" (7.1mm)	10	11346103	23	B11155300AF	36	B1190530J00	49	11347101	62	11347200	Spare parts type 補用パーツ仕様	
JA□	19/64" (7.5mm)	11	11346103	24	B11155300AF	37	B1190530J0A	50	11347101	63	11347200	Spare parts type 補用パーツ仕様	
K□	5/16" (8.0mm)	12	11346103	25	B11155300AF	38	B1190530K00	51	11347309	64	11347408	Spare parts type 補用パーツ仕様	
M□	3/8" (9.5mm)	13	11346103	26	B11155300AM	39	B1190530M00	52	11347309	65	11347408	Special type 特別仕様	

[Note] 1.Enter A(standard feed type) or B(coarse feed type) in the box(□) shown in the column for sub-gauge type. [注記] 1.サブゲージ仕様名の欄の□内は A→標準送りタイプ B→粗目送りタイプ

TABLE OF EXCHANGING GAUGE PARTS (1)

No.	Supply Code	Parts No.	Replacement	Parts name	Remarks	Choice	Step	Level	Cons	Qty	Rep. QTY
1		11346004		NEEDLE PLATE A						1	
2		11346004		NEEDLE PLATE A						1	
3		11346004		NEEDLE PLATE A						1	
4		11346004		NEEDLE PLATE A						1	
5		11346004		NEEDLE PLATE A						1	
6		11346004		NEEDLE PLATE A						1	
7		11346004		NEEDLE PLATE A						1	
8		11346004		NEEDLE PLATE A						1	
9		11346103		THROAT PLATE						1	
10		11346103		THROAT PLATE						1	
11		11346103		THROAT PLATE						1	
12		11346103		THROAT PLATE						1	
13		11346103		THROAT PLATE						1	
14		B11155300AD		THROAT PLATE COVER						1	
15		B11155300AD		THROAT PLATE COVER						1	
16		B11155300AD		THROAT PLATE COVER						1	
17		B11155300AD		THROAT PLATE COVER						1	
18		B11155300AD		THROAT PLATE COVER						1	
19		B11155300AF		THROAT PLATE OPEN COVER						1	
20		B11155300AF		THROAT PLATE OPEN COVER						1	
21		B11155300AF		THROAT PLATE OPEN COVER						1	
22		B11155300AF		THROAT PLATE OPEN COVER						1	
23		B11155300AF		THROAT PLATE OPEN COVER						1	
24		B11155300AF		THROAT PLATE OPEN COVER						1	
25		B11155300AF		THROAT PLATE OPEN COVER						1	
26		B11155300AM		THROAT PLATE PLUG ASM. M						1	
27		B1190530C0A		GAUGE PLATE CA						1	
28		B1190530D00		GAUGE DD						1	
29		B1190530D0A		GAUGE 7/64						1	
30		B1190530D0C		GAUGE 1/8 DC						1	
31		B1190530D0B		GAUGE 1/8 DB						1	
32		B1190530E00		GAUGE PLATE 5/32 E						1	
33		B1190530F00		GAUGE PLATE 3/16 F						1	
34		B1190530G00		GAUGE PLATE 7/32 G						1	
35		B1190530H00		GAUGE PLATE 1/4 H						1	
36		B1190530J00		GAUGE PLATE 9/32						1	
37		B1190530J0A		GAUGE PLATE 19/64						1	
38		B1190530K00		THROAT PLATE 5/16						1	
39		B1190530M00		THROAT PLATE 3/8						1	
40		11346905		WASTE MATERIAL GUARD E						1	
41		11346905		WASTE MATERIAL GUARD E						1	
42		11346905		WASTE MATERIAL GUARD E						1	
43		11346905		WASTE MATERIAL GUARD E						1	
44		11346905		WASTE MATERIAL GUARD E						1	
45		11346905		WASTE MATERIAL GUARD E						1	
46		11346905		WASTE MATERIAL GUARD E						1	

TABLE OF EXCHANGING GAUGE PARTS (1)

Specifications of the sub-gauge	Gauge width	1		2		3		4		5		Type	Note
		Throat plate 針板		Throat plate cover (asm) accessory 針板蓋(組) *付属品		Gauge ゲージ		Throat plate chip guard 針板布屑カバー		Throat plate chip guard accessory 針板布屑ガイド *付属品			
サブゲージ仕様	サブゲージ巾											仕様	備考
		Ref.no	Part no	Ref.no	Part no	Ref.no	Part no	Ref.no	Part no	Ref.no	Part no		
CA□	5/64" (2.0mm)	1	11346004	14	B11155310AD	27	B1190530C0A	40	11346905	53	11347002	Spare parts type 補用パーツ仕様	Operate your sewing machine with the stitch length set to 2mm or less.(Cut-after type) 送りピッチ2mm以下(後メスタイプ)
D□	1/8" (3.2mm)	2	11346004	15	B11155300AD	28	B1190530D00	41	11346905	54	11347002	Standard type 標準仕様	
DA□	7/64" (2.8mm)	3	11346004	16	B11155300AD	29	B1190530D0A	42	11346905	55	11347002	Spare parts type 補用パーツ仕様	
DC□	1/8" (3.2mm)	4	11346004	17	B11155300AD	30	B1190530D0C	43	11346905	56	11347002	Spare parts type 補用パーツ仕様	Gauge of chain-off thread 空環用ゲージ
DD□	1/8" (3.2mm)	5	11346004	18	B11155300AD	31	B1190530D0B	44	11346905	57	11347002	Spare parts type 補用パーツ仕様	B11100120AA(B111001200A) Exclusive slide plate 送り板
E□	5/32" (4.0mm)	6	11346004	19	B11155300AF	32	B1190530E00	45	11346905	58	11347002	Special type 特別仕様	
F□	3/16" (4.8mm)	7	11346004	20	B11155300AF	33	B1190530F00	46	11346905	59	11347002	Special type 特別仕様	
G□	7/32" (5.6mm)	8	11346004	21	B11155300AF	34	B1190530G00	47	11347101	60	11347200	Special type 特別仕様	
H□	1/4" (6.4mm)	9	11346103	22	B11155300AF	35	B1190530H00	48	11347101	61	11347200	Special type 特別仕様	
J□	9/32" (7.1mm)	10	11346103	23	B11155300AF	36	B1190530J00	49	11347101	62	11347200	Spare parts type 補用パーツ仕様	
JA□	19/64" (7.5mm)	11	11346103	24	B11155300AF	37	B1190530J0A	50	11347101	63	11347200	Spare parts type 補用パーツ仕様	
K□	5/16" (8.0mm)	12	11346103	25	B11155300AF	38	B1190530K00	51	11347309	64	11347408	Spare parts type 補用パーツ仕様	
M□	3/8" (9.5mm)	13	11346103	26	B11155300AM	39	B1190530M00	52	11347309	65	11347408	Special type 特別仕様	

[Note] 1.Enter A(standard feed type) or B(coarse feed type) in the box(□) shown in the column for sub-gauge type. [注記] 1.サブゲージ仕様名の欄の□内は A→標準送りタイプ B→粗目送りタイプ

TABLE OF EXCHANGING GAUGE PARTS (1)

No.	Supply Code	Parts No.	Replacement	Parts name	Remarks	Choice	Step	Level	Cons	Qty	Rep. QTY
47		11347101		WASTE MATERIAL GUARD G						1	
48		11347101		WASTE MATERIAL GUARD G						1	
49		11347101		WASTE MATERIAL GUARD G						1	
50		11347101		WASTE MATERIAL GUARD G						1	
51		11347309		WASTE MATERIAL GUARD K						1	
52		11347309		WASTE MATERIAL GUARD K						1	
53		11347002		WASTE MATERIAL GUARD E						1	
54		11347002		WASTE MATERIAL GUARD E						1	
55		11347002		WASTE MATERIAL GUARD E						1	
56		11347002		WASTE MATERIAL GUARD E						1	
57		11347002		WASTE MATERIAL GUARD E						1	
58		11347002		WASTE MATERIAL GUARD E						1	
59		11347002		WASTE MATERIAL GUARD E						1	
60		11347200		WASTE MATERIAL GUARD G						1	
61		11347200		WASTE MATERIAL GUARD G						1	
62		11347200		WASTE MATERIAL GUARD G						1	
63		11347200		WASTE MATERIAL GUARD G						1	
64		11347408		WASTE MATERIAL GUARD K						1	
65		11347408		WASTE MATERIAL GUARD K						1	

TABLE OF EXCHANGING GAUGE PARTS (2)

Specifications of the sub-gauge サブゲージ仕様	Gauge width サブゲージ巾	1 Chip guard 布屑ガイド		2 Hinging presser (asm) 自由押え(組)		3 Feed dog 送り歯				4 Knife メス		Type 仕様	Note 備考
		Ref.no	Part no	Ref.no	Part no	A		B		Ref.no	Part no		
						Ref.no	Part no	Ref.no	Part no				
CA□	5/64" (2.0mm)	1	11346400	14	B1524530CB0	27	B1609530C0A		—	50	B4145530C00	Spare parts type 補用パーツ仕様	Operate your sewing machine with the stitch length set to 2mm or less.(Cut-after type) 送りピッチ2mm以下(後メスタイプ)
D□	1/8" (3.2mm)	2	11346400	15	B1524530DB0	28	B1609530D00	40	B1609530E00	51 52 53	B4121522000 B4145530B0A E4145530B00	Standard type 標準仕様	
DA□	7/64" (2.8mm)	3	11346400	16	B1524530DB0	29	B1609530D00	41	B1609530E00	54 55 56	B4121522000 B4145530B0A E4145530B00	Spare parts type 補用パーツ仕様	
DC□	1/8" (3.2mm)	4	11346400	17	B1524530DB0	30	B1609530D0E		—	57 58 59	B4121522000 B4145530B0A E4145530B00	Spare parts type 補用パーツ仕様	Gauge of chain-off thread 空環用ゲージ
DD□	1/8" (3.2mm)	5	11346400	18	B1524530DBA	31	B1609530J00		—	60 61 62	B4121522000 B4145530B0A E4145530B00	Spare parts type 補用パーツ仕様	B11100120AA(B111001200A) Exclusive slide plate 滑り板
E□	5/32" (4.0mm)	6	11346400	19	B1524530EB0	32	B1609530D00	42	B1609530E00	63 64 65	B4121522000 B4145530B0A E4145530B00	Special type 特別仕様	
F□	3/16" (4.8mm)	7	11346400	20	B1524530EB0	33	B1609530D00	43	B1609530E00	66 67 68	B4121522000 B4145530B0A E4145530B00	Special type 特別仕様	
G□	7/32" (5.6mm)	8	11346400	21	B1524530GB0	34	B1609530G00	44	B1609530H00	69 70 71	B4121522000 B4145530B0A E4145530B00	Special type 特別仕様	
H□	1/4" (6.4mm)	9	11346509	22	B1524530GB0	35	B1609530G00	45	B1609530H00	72 73 74	B4121522000 B4145530B0A E4145530B00	Spare parts type 補用パーツ仕様	
J□	9/32" (7.1mm)	10	11346509	23	B1524530GB0	36	B1609530G00	46	B1609530H00	75 76 77	B4121522000 B4145530B0A E4145530B00	Spare parts type 補用パーツ仕様	
JA□	19/64" (7.5mm)	11	11346509	24	B1524530GB0	37	B1609530G00	47	B1609530H00	78 79 80	B4121522000 B4145530B0A E4145530B00	Spare parts type 補用パーツ仕様	
K□	5/16" (8.0mm)	12	11346509	25	B1524530GB0	38	B1609530G00	48	B1609530H00	81 82 83	B4121522000 B4145530B0A E4145530B00	Spare parts type 補用パーツ仕様	
M□	3/8" (9.5mm)	13	11346509	26	B1524530GB0	39	B1609530G00	49	B1609530H00	84 85 86	B4121522000 B4145530B0A E4145530B00	Special type 特別仕様	

[Note] 1. Enter A(standard feed type) or B(coarse feed type) in the box(□) shown in the column for sub-gauge type.  
2. For the classification of knives in terms of specification  
B4121522000 . . . . . For Japan  
B4145530B0A . . . . . For export  
B4145530B00 . . . . . Accessory for the machine for Japan  
(cutting width is 2.4mm or more)  
B4145530C00 . . . . . For the cutting width of 2.3mm or less (including accessories)

[注] 1. サブゲージ仕様名の欄の□内は、A-標準送りタイプ、B-粗目送りタイプ  
2. メスの仕様区分はB4121522000 . . . . . 日本用  
B4145530B0A . . . . . 輸出用  
B4145530B00 . . . . . 日本用専用(切り巾2.4mm以上)  
B4145530C00 . . . . . 切り巾2.3mm以下用(付属品)

TABLE OF EXCHANGING GAUGE PARTS (2)

No.	Supply Code	Parts No.	Replacement	Parts name	Remarks	Choice	Step	Level	Cons	Qty	Rep. QTY
1		11346400		WASTE MATERIAL GUIDE						1	
2		11346400		WASTE MATERIAL GUIDE						1	
3		11346400		WASTE MATERIAL GUIDE						1	
4		11346400		WASTE MATERIAL GUIDE						1	
5		11346400		WASTE MATERIAL GUIDE						1	
6		11346400		WASTE MATERIAL GUIDE						1	
7		11346400		WASTE MATERIAL GUIDE						1	
8		11346400		WASTE MATERIAL GUIDE						1	
9		11346509		WASTE MATERIAL GUIDE C						1	
10		11346509		WASTE MATERIAL GUIDE C						1	
11		11346509		WASTE MATERIAL GUIDE C						1	
12		11346509		WASTE MATERIAL GUIDE C						1	
13		11346509		WASTE MATERIAL GUIDE C						1	
14		B1524530CB0		PRESSER FOOT ASM.						1	
15		B1524530DB0		PRESSER FOOT ASM.						1	
16		B1524530DB0		PRESSER FOOT ASM.						1	
17		B1524530DB0		PRESSER FOOT ASM.						1	
18	D	B1524530DBA		PRESSER DA WITH FINGER GUARD						1	
19		B1524530EB0		PRESSER FOOT ASM. E						1	
20		B1524530EB0		PRESSER FOOT ASM. E						1	
21		B1524530GB0		PRESSER FOOT AS- M G WITH GUARD						1	
22		B1524530GB0		PRESSER FOOT AS- M G WITH GUARD						1	
23		B1524530GB0		PRESSER FOOT AS- M G WITH GUARD						1	
24		B1524530GB0		PRESSER FOOT AS- M G WITH GUARD						1	
25		B1524530GB0		PRESSER FOOT AS- M G WITH GUARD						1	
26		B1524530GB0		PRESSER FOOT AS- M G WITH GUARD						1	
27		B1609530C0A		FEED DOG CA						1	
28		B1609530D00		FEED DOG D						1	
29		B1609530D00		FEED DOG D						1	
30		B1609530D0E		FEED DOG DE						1	
31		B1609530J00		FEED DOG J						1	
32		B1609530D00		FEED DOG D						1	
33		B1609530D00		FEED DOG D						1	
34		B1609530G00		FEED DOG G						1	
35		B1609530G00		FEED DOG G						1	
36		B1609530G00		FEED DOG G						1	
37		B1609530G00		FEED DOG G						1	
38		B1609530G00		FEED DOG G						1	
39		B1609530G00		FEED DOG G						1	
40		B1609530E00		FEED DOG E						1	
41		B1609530E00		FEED DOG E						1	
42		B1609530E00		FEED DOG E						1	
43		B1609530E00		FEED DOG E						1	
44		B1609530H00		FEED DOG H						1	



TABLE OF EXCHANGING GAUGE PARTS (2)

Specifications of the sub-gauge サブゲージ仕様	Gauge width サブゲージ巾	1 Chip guard 布屑ガイド		2 Hinging presser (asm) 自由押え(組)		3 Feed dog 送り歯				4 Knife メス		Type 仕様	Note 備考
		Ref.no	Part no	Ref.no	Part no	A		B		Ref.no	Part no		
						Ref.no	Part no	Ref.no	Part no				
CA□	5/64" (2.0mm)	1	11346400	14	B1524530CB0	27	B1609530C0A		—	50	B4145530C00	Spare parts type 補用パーツ仕様	Operate your sewing machine with the stitch length set to 2mm or less.(Cut-after type) 送りピッチ2mm以下(後メスタイプ)
D□	1/8" (3.2mm)	2	11346400	15	B1524530DB0	28	B1609530D00	40	B1609530E00	51 52 53	B4121522000 B4145530B0A E4145530B00	Standard type 標準仕様	
DA□	7/64" (2.8mm)	3	11346400	16	B1524530DB0	29	B1609530D00	41	B1609530E00	54 55 56	B4121522000 B4145530B0A E4145530B00	Spare parts type 補用パーツ仕様	
DC□	1/8" (3.2mm)	4	11346400	17	B1524530DB0	30	B1609530D0E		—	57 58 59	B4121522000 B4145530B0A E4145530B00	Spare parts type 補用パーツ仕様	Gauge of chain-off thread 空環用ゲージ
DD□	1/8" (3.2mm)	5	11346400	18	B1524530DBA	31	B1609530J00		—	60 61 62	B4121522000 B4145530B0A E4145530B00	Spare parts type 補用パーツ仕様	B11100120AA(B111001200A) Exclusive slide plate 滑り板
E□	5/32" (4.0mm)	6	11346400	19	B1524530EB0	32	B1609530D00	42	B1609530E00	63 64 65	B4121522000 B4145530B0A E4145530B00	Special type 特別仕様	
F□	3/16" (4.8mm)	7	11346400	20	B1524530EB0	33	B1609530D00	43	B1609530E00	66 67 68	B4121522000 B4145530B0A E4145530B00	Special type 特別仕様	
G□	7/32" (5.6mm)	8	11346400	21	B1524530GB0	34	B1609530G00	44	B1609530H00	69 70 71	B4121522000 B4145530B0A E4145530B00	Special type 特別仕様	
H□	1/4" (6.4mm)	9	11346509	22	B1524530GB0	35	B1609530G00	45	B1609530H00	72 73 74	B4121522000 B4145530B0A E4145530B00	Spare parts type 補用パーツ仕様	
J□	9/32" (7.1mm)	10	11346509	23	B1524530GB0	36	B1609530G00	46	B1609530H00	75 76 77	B4121522000 B4145530B0A E4145530B00	Spare parts type 補用パーツ仕様	
JA□	19/64" (7.5mm)	11	11346509	24	B1524530GB0	37	B1609530G00	47	B1609530H00	78 79 80	B4121522000 B4145530B0A E4145530B00	Spare parts type 補用パーツ仕様	
K□	5/16" (8.0mm)	12	11346509	25	B1524530GB0	38	B1609530G00	48	B1609530H00	81 82 83	B4121522000 B4145530B0A E4145530B00	Spare parts type 補用パーツ仕様	
M□	3/8" (9.5mm)	13	11346509	26	B1524530GB0	39	B1609530G00	49	B1609530H00	84 85 86	B4121522000 B4145530B0A E4145530B00	Special type 特別仕様	

[Note] 1. Enter A(standard feed type) or B(coarse feed type) in the box(□) shown in the column for sub-gauge type.  
2. For the classification of knives in terms of specification  
B4121522000 . . . . . For Japan  
B4145530B0A . . . . . For export  
B4145530B00 . . . . . Accessory for the machine for Japan  
(cutting width is 2.4mm or more)  
B4145530C00 . . . . . For the cutting width of 2.3mm or less (including accessories)

[注] 1. サブゲージ仕様名の欄の□内は、A-標準送りタイプ、B-粗目送りタイプ  
2. メスの仕様区分はB4121522000 . . . . . 日本用  
B4145530B0A . . . . . 輸出用  
B4145530B00 . . . . . 日本用専用(切り巾2.4mm以上)  
B4145530C00 . . . . . 切り巾2.3mm以下用(付属品)

TABLE OF EXCHANGING GAUGE PARTS (2)

No.	Supply Code	Parts No.	Replacement	Parts name	Remarks	Choice	Step	Level	Cons	Qty	Rep. QTY
45		B1609530H00		FEED DOG H						1	
46		B1609530H00		FEED DOG H						1	
47		B1609530H00		FEED DOG H						1	
48		B1609530H00		FEED DOG H						1	
49		B1609530H00		FEED DOG H						1	
50		B4145530C00		KNIFE (C)						1	
51		B4121522000		KNIFE						1	
52		B4145530B0A		KNIFE						1	
53		B4145530B00		CLOTH CUTTING KNIFE B						1	
54		B4121522000		KNIFE						1	
55		B4145530B0A		KNIFE						1	
56		B4145530B00		CLOTH CUTTING KNIFE B						1	
57		B4121522000		KNIFE						1	
58		B4145530B0A		KNIFE						1	
59		B4145530B00		CLOTH CUTTING KNIFE B						1	
60		B4121522000		KNIFE						1	
61		B4145530B0A		KNIFE						1	
62		B4145530B00		CLOTH CUTTING KNIFE B						1	
63		B4121522000		KNIFE						1	
64		B4145530B0A		KNIFE						1	
65		B4145530B00		CLOTH CUTTING KNIFE B						1	
66		B4121522000		KNIFE						1	
67		B4145530B0A		KNIFE						1	
68		B4145530B00		CLOTH CUTTING KNIFE B						1	
69		B4121522000		KNIFE						1	
70		B4145530B0A		KNIFE						1	
71		B4145530B00		CLOTH CUTTING KNIFE B						1	
72		B4121522000		KNIFE						1	
73		B4145530B0A		KNIFE						1	
74		B4145530B00		CLOTH CUTTING KNIFE B						1	
75		B4121522000		KNIFE						1	
76		B4145530B0A		KNIFE						1	
77		B4145530B00		CLOTH CUTTING KNIFE B						1	
78		B4121522000		KNIFE						1	
79		B4145530B0A		KNIFE						1	
80		B4145530B00		CLOTH CUTTING KNIFE B						1	
81		B4121522000		KNIFE						1	
82		B4145530B0A		KNIFE						1	
83		B4145530B00		CLOTH CUTTING KNIFE B						1	
84		B4121522000		KNIFE						1	
85		B4145530B0A		KNIFE						1	
86		B4145530B00		CLOTH CUTTING KNIFE B						1	

LIST FOR INFORMATION OF CHANGE

As to the place changed, refer to the corresponding Rev.No.  
 When previous parts(Obsoleted part)and new parts(Added parts)are  
 not interchangeable with each other:  
 In this case,even obsoleted parts(D.)can be ordered with the  
 obsoleted part number,so select the parts with changed dates and  
 place your orders.

変更箇所は、該当Rev.No.版をご参照ください。  
 部品の互換性がない変更の場合は、削除された品番でも、ご注文できます。

29133709  
 No.0888-10 Rev.No.

\*A:Added parts追加部品/D:Obsoleted parts削除部品/E:Erratum訂正

* Rev. No.	Page 頁	Ref. No.	Parts No. 品番	* Rev. No.	Page 頁	Ref. No.	Parts No. 品番
D 09	2	19	111-00104	A 10	2	19	401-11022
D 09	2	67	M6004-350-AAC				
D 09	2	68	SS-4121215-SP				
D 09	2	69	WP-0501016-SD				
D 09	2	70	M6004-350-AAF				
D 09	2	71	M6004-350-AAA				
D 09	2	82	229-01904	A 10	2	81	114-15205
D 09	2	83	M6004-350-AAL				
				A 10	2	71	401-16677
D 09	4	4	110-39070	A 10	4	4	229-18072
D 09	4	5	110-39062	A 10	4	5	229-18064
D 09	4	6	B1905-541-B00	A 10	4	6	229-18403
				A 10	4	7	229-18502
				A 10	4	8	229-18601
				A 10	4	9	229-18700
D 09	4	7	110-05204	A 10	4	10	229-18106
D 09	4	8	B1408-552-000	A 10	4	11	229-06606
D 09	4	9	B1903-552-000	A 10	4	12	229-18304
D 09	4	11	113-70871	A 10	4	14	400-97024
D 09	4	16	113-70863	A 10	4	16	400-95787
D 09	4	17	113-71606				
D 09	4	18	B4107-522-000	A 10	4	18	PS-0400082-KP
D 09	4	19	113-49214	A 10	4	17	400-95788
D 09	4	44	110-02508	A 10	4	44	401-05231
				A 10	12	1	401-20641
				A 10	14	1	113-56953
D 09	14	21	SS-7090520-TP				
D 09	14	22	SS-7110830-SP				
D 09	14	25	113-57209				
D 09	18	10	112-33202	A 10	18	10	401-12705
D 09	18	11	HW-2003900-00				
D 09	18	12	HA-0060000-00	A 10	18	12	HA-0060000-0A
D 09	18	16	HW-5000700-00				
D 09	18	21	HK-0346400-0B				
D 09	22	6	RO-1082401-00	A 10	22	6	RO-0982401-00
D 09	22	16	SM-9062563-TR	A 10	22	16	401-01720

## HOW TO MAKE USE OF THIS PARTS LIST

### 1.Explanation of codes

1)"\*"mark.....means this part is changed from the previous parts book.

As to the details of the change, refer to the "List for information of change".

2)"#01".....refer to "Note" explanation at bottom of page.

### 2.Codes on the "Qty" column

- Each numeral indicates the number of parts required.
- "0.1" and "2.5" indicate the length (in meters) of the respective parts.

3.Parentheses mean that the corresponding part is a subpart that constructs an assembly part.

4.Dotted lines on the Figures indicate assembly parts.

### 1."注記"欄の記号説明

1) "\*"印.....前回のパーツブックに比較して今回変更された部品を意味します。

変更内容は、"変更情報リスト"を参照してください。

2) "#01".....ページ下の"注記"の説明を参照してください。

2.数量欄の数字は、個数を表し、0.1、2.5等の数値は、長さ（単位メートル）を表します。

3.数量欄の（ ）は、組部品を構成している子部品であることを意味します。

4.イラストページの-----枠は、組構成であることを意味します。

# NUMERICAL INDEX OF PARTS

PART NO	PAGE	REF NO.	PART NO	PAGE	REF NO.	PART NO	PAGE	REF NO.
11001609	4	52	11300506	2	2	11347101	44	50
11002409	6	28	11300605	4	56	11347200	44	63
11002904	6	37	11301355	12	30	11347309	44	52
11003308	2	12	11301405	12	31	11347408	44	65
11004207	10	23	11301603	12	11	11349008	6	13
11009800	16	5	11301652	12	6	11349107	6	42
11015906	10	32	11301702	12	5	11351004	10	39
11017357	6	2	11302304	6	25	11351400	20	2
11023108	36	3	11302353	6	23	11351509	20	5
11030202	2	18	11302411	16	12	11351608	20	11
11032158	6	33	11302502	16	40	11351806	20	3
11038650	10	41	11302619	18	67	11351905	20	4
11038759	10	36	11302700	16	17	11352101	20	8
11038809	10	29	11303161	16	26	11352200	20	6
11043106	22	58	11303328	16	4	11352309	20	17
11043205	22	57	11303567	28	25	11352408	20	15
11043304	22	62	11303807	28	19	11352507	20	24
11047107	36	4	11303906	28	24	11352606	20	20
11071495	6	29	11304003	28	2	11352705	20	41
11095254	2	15	11304052	28	1	11352804	20	43
11101300	30	17	11304151	28	28	11352903	20	39
11101508	30	19	11304201	28	13	11353059	20	32
11101607	30	21	11304300	28	15	11353307	22	53
11102308	30	12	11304409	28	30	11353406	20	26
11102605	2	10	11305000	18	73	11353505	20	31
11141355	10	34	11305901	12	36	11353604	20	30
11205309	12	14	11306107	12	33	11353653	20	28
11205408	12	13	11306206	14	45	11354008	20	46
11210903	28	10	11307352	34	11	11354057	20	45
11211000	28	4	11311057	18	71	11354107	20	40
11214509	28	22	11314267	18	66	11354404	20	21
11217601	30	32	11314507	16	1	11354602	20	10
11221504	34	29	11325750	2	1	11355054	22	52
11222007	34	30	11345600	4	60	11355351	14	44
11228400	30	28	11345709	4	58	11355609	12	40
11231503	34	27	11345808	4	73	11356201	34	34
11233053	32	15	11346004	4	76	11356904	24	4
11233251	32	19	11346004	42	8	11356953	24	1
11233301	32	7	11346103	42	13	11357001	24	8
11233400	32	4	11346400	4	72	11357100	24	13
11234408	32	6	11346400	46	8	11357209	24	6
11234507	32	13	11346509	46	13	11357308	24	3
11234606	32	8	11346905	4	75	11357407	24	5
11258001	32	3	11346905	42	46	11357506	24	14
11300407	4	55	11347002	44	59	11357704	24	10

# NUMERICAL INDEX OF PARTS

PART NO	PAGE	REF NO.	PART NO	PAGE	REF NO.	PART NO	PAGE	REF NO.
11357803	24	24	22907802	12	1	22921605	2	39
11357902	24	29	22908156	12	7	22921704	2	35
11357951	24	27	22908305	12	9	22921803	2	36
11358108	24	22	22908552	12	4	22923015	34	14
11358207	24	19	22908909	12	19	22923056	34	12
11358306	24	31	22910103	6	26	22923205	34	17
11359700	32	17	22910608	16	25	22923312	34	13
11359809	32	26	22910707	16	24	22923403	34	19
11359957	32	23	22910806	16	27	22923502	34	21
11360153	32	22	22910905	16	23	22923601	34	20
11360708	36	2	22911002	16	37	22923700	34	15
11360757	36	1	22911101	16	13	22923809	34	18
11361003	36	36	22911705	16	21	22923908	34	22
11362357	30	1	22911804	16	7	22924005	34	26
11362456	32	1	22912000	16	9	22924609	34	28
11364700	30	13	22912752	18	62	22924807	22	66
11371200	34	6	22912802	18	61	22924906	34	10
11371259	34	4	22912901	16	36	22925002	34	36
11371358	34	7	22913008	18	48	22927305	38	27
11371705	26	53	22915003	16	15	22927354	38	13
11372109	30	24	22915151	16	42	22927404	38	28
11372356	30	22	22915201	18	45	22927602	38	29
11372554	4	66	22915359	18	55	22928105	38	22
11385127	16	6	22916001	10	28	22928303	38	21
11397007	16	10	22916308	10	24	22928402	38	20
11415205	4	81	22916506	10	33	22928501	38	14
12341806	36	33	22916555	10	31	22928709	38	26
13522206	32	11	22917058	10	37	22928808	38	18
22900401	2	11	22917157	10	26	22928907	38	16
22900609	2	27	22918064	6	5	22929004	38	17
22901003	4	54	22918072	6	4	22930309	40	14
22901250	4	50	22918106	6	10	22930358	40	1
22901805	4	80	22918304	6	12	22930408	40	10
22903306	6	43	22918403	6	6~9	22930507	40	9
22904155	8	45	22918502	6	6~9	22930556	40	15
22904155	18	57	22918601	6	6~9	22930705	40	7
22905004	10	21	22918700	6	6~9	22930804	40	5
22905103	10	22	22919203	6	3	22930903	40	4
22906457	10	5	22920508	2	29	22931000	40	3
22906606	6	11	22920607	4	46	22931109	40	2
22907406	12	25	22921001	2	30	22931307	40	11
22907505	12	22	22921209	2	38	22931406	40	8
22907554	12	21	22921308	2	33	22931703	36	34
22907604	12	23	22921407	2	34	22932107	36	8
22907703	12	24	22921506	2	37	22932156	36	7

# NUMERICAL INDEX OF PARTS

PART NO	PAGE	REF NO.	PART NO	PAGE	REF NO.	PART NO	PAGE	REF NO.
22932206	36	11	22954309	30	6	B1190530H00	42	35
22932305	36	17	22954606	30	2	B1190530J00	42	36
22932404	36	14	22958300	2	8	B1190530JOA	42	37
22932453	36	13	22962609	30	18	B1190530K00	42	38
22932909	10	35	22962708	20	37	B1190530M00	42	39
22933402	38	2	22962807	12	37	B1193530000	4	74
22933451	38	1	22962906	30	20	B1213552000A	6	39
22933501	38	3	22967202	18	60	B1215552000	6	41
22933600	38	5	22970602	16	35	B13050120A0	10	12
22933659	38	4	22971105	18	65	B13061550A0	10	14
22933758	38	6	22971204	16	2	B13061550B0	10	11
22933907	38	7	22971550	16	19	B13061550C0	10	10
22934004	38	8	22972608	4	43	B13071550A0	10	17
22934202	36	22	40010395	18	49	B13071550B0	10	16
22934251	36	19	40053719	36	32	B13081550A0	10	19
22934301	36	23	40056521	36	31	B1401530A00	10	2
22934400	36	21	40060989	12	27	B1401530B00	10	42
22934509	36	25	40064815	36	26	B1412352B00	28	5
22934608	36	20	40081220	16	11	B1418530000	10	8
22934707	36	15	40090058	10	4	B14537710A0	20	23
22937965	6	36	40095787	6	16	B1501530000	14	49
22940654	18	52	40095788	6	17	B1521555000	12	2
22940753	16	34	40097024	6	14	B1524530CB0	46	14
22940803	16	30	40101720	36	16	B1524530DB0	12	29
22942601	10	40	40105231	6	44	B1524530DB0	46	17
22944508	12	15	40111022	2	19	B1524530DBA	46	18
22944607	12	42	40112705	32	10	B1524530EB0	46	20
22944706	12	34	40116677	4	71	B1524530GB0	46	26
22945307	2	40	40120641	20	1	B1609530C0A	46	27
22945356	2	32	B1110012000	4	51	B1609530D00	16	31
22945406	2	25	B1115522000A	4	68	B1609530D00	46	33
22945463	2	20	B11155300AD	4	67	B1609530D0E	46	30
22945505	2	22	B11155300AD	42	18	B1609530E00	46	43
22945604	2	24	B11155300AF	42	25	B1609530G00	46	39
22945703	2	21	B11155300AM	42	26	B1609530H00	46	49
22945802	2	23	B1148555000	16	8	B1609530H00	48	49
22947006	34	1	B1190530C0A	42	27	B1609530J00	46	31
22950000	20	38	B1190530D00	4	44	B1636581C00	18	70
22950356	22	47	B1190530D00	42	28	B2906415000	28	6
22950950	22	50	B1190530D0A	42	29	B3118415000	4	62
22951008	22	55	B1190530D0B	42	31	B31334150A0	4	61
22951404	22	59	B1190530D0C	42	30	B3136415000	4	63
22951552	22	67	B1190530E00	42	32	B3404122000	34	35
22954101	30	4	B1190530F00	42	33	B3538112000	34	8
22954200	30	5	B1190530G00	42	34	B4114530000	26	52

NUMERICAL INDEX OF PARTS

PART NO	PAGE	REF NO.	PART NO	PAGE	REF NO.	PART NO	PAGE	REF NO.
B4115530000	26	50	NS6150310SP	24	32	SD0700451TP	30	33
B4116530000	26	51	NS6150310SP	28	14	SD0700711TP	30	35
B41175300A0	24	35	NS6150430SP	20	70	SD0701511TP	20	33
B4120530000	24	46	NS6150430SP	22	70	SD0720331SP	12	20
B4121522000	24	25	NS6150430SP	28	17	SD0790431SP	24	15
B4121522000	48	84	NS6160520SP	24	23	SD0790501SP	28	12
B4122522000	24	44	NS6620310SP	14	50	SD0920321SP	24	21
B412352200A	24	16	NS6660410SH	22	63	SD1000801SH	16	44
B4124530000	24	30	NS6660430SP	22	64	SE4301041SR	34	16
B4126530000	26	54	NS6680410SP	16	39	SK3412000SC	36	27
B4145530B00	48	86	PS0400082KP	6	18	SK3412000SC	38	31
B4145530B0A	24	43	RC0150001KP	16	51	SL4030631SC	32	2
B4145530B0A	48	85	RC0150001KP	18	51	SL4030641SE	32	18
B4145530C00	48	50	RC1850001KP	6	22	SL4030851SF	34	23
B8228125000	36	35	RC2651218KP	20	7	SL4051001MZ	6	38
BT0500300EA	34	5	RE0300000K0	12	35	SM4031501SC	30	8
BT0600402EA	34	3	RE0300000K0	32	14	SM4040655SP	30	3
CM300200001	4	79	RE0500000K0	12	10	SM4041655SP	30	7
CM301300001	4	70	RE0500000K0	16	22	SM4051405SE	40	12
CQ252000000	34	33	RE0500000K0	22	54	SM6061610SC	40	6
CS064061ASP	12	17	RE0500000K0	24	20	SM8061010TP	18	63
CS120101BSH	28	8	RE0500000KP	30	16	SM8061050TP	18	64
D2468555B00	30	27	RE0600000K0	20	18	SM8063012TR	36	10
D2588L8WB00	20	22	RE0900000K0	32	9	SM9061203SE	36	24
HA001900000	30	11	RE1000000K0	36	12	SQ1150501SD	34	32
HA00600000A	32	12	RE1200000K0	30	25	SS1090510SP	20	14
HK034610140	22	69	RO029180100	6	40	SS1120710SP	2	57
HK03464000B	22	68	RO037180100	12	3	SS1120710SP	4	57
HK03464000B	30	29	RO044240100	6	21	SS2110915SP	4	78
HW500070000	30	9	RO048190100	24	26	SS4080310SP	4	69
M40071100AA	6	34	RO078190100	18	59	SS4080515SP	24	45
M40071100AB	6	35	RO092270200	16	16	SS4080620TP	16	32
MC200500900	10	3	RO098240100	36	6	SS4090615SP	6	27
MDB100B1400	10	9	RO195240100	34	2	SS4110515SP	12	48
NM6040000SN	22	61	SB309000400	28	18	SS4110515SP	14	48
NM6050001SE	40	17	SD0490261SP	38	23	SS4110515SP	38	15
NM6060001SE	36	18	SD0500251SP	20	13	SS4110715SP	20	12
NM6160511SE	40	18	SD0550212TP	32	24	SS4110715SP	36	30
NS6090310SP	2	13	SD0600322SD	14	51	SS4110915TP	10	30
NS6090310SP	36	29	SD0600361SP	20	34	SS4120615SP	2	65
NS6110310SP	20	19	SD0630275SP	20	44	SS4120615SP	4	65
NS6110420SP	30	34	SD0640261SP	12	39	SS4120615SP	12	46
NS6120310SP	24	37	SD0640261SP	20	42	SS4120615SP	14	46
NS6120480SP	24	42	SD0640604TP	24	7	SS4120615SP	30	14
NS6150310SP	20	25	SD0641452TP	22	49	SS4120615SP	34	9



NUMERICAL INDEX OF PARTS

PART NO	PAGE	REF NO.	PART NO	PAGE	REF NO.	PART NO	PAGE	REF NO.
SS4120915SP	2	9	SS7090410SP	32	25	TA1250705R0	2	7
SS4120915SP	10	25	SS7090520TP	24	9	TA1250804R0	10	1
SS4120915SP	24	34	SS7090620TP	12	18	TA2000502R0	2	14
SS4120915SP	30	15	SS7090710SP	12	28	TA2101002R0	2	17
SS4120915SP	32	16	SS7091110TP	36	28	WP0371026SD	24	39
SS4121015SP	4	49	SS7110350SP	38	19	WP0450000SD	22	60
SS4121415SP	32	21	SS7110740TP	12	38	WP0450801SD	6	31
SS4121415SP	38	9	SS7110740TP	18	50	WP0450826SC	38	30
SS4150915SP	14	47	SS7110740TP	30	23	WP0480856SP	18	54
SS4150915SP	20	16	SS7110830SP	24	12	WP0480856SP	26	47
SS4150915SP	24	18	SS7111120SP	18	56	WP0501016SD	24	41
SS4150915SP	34	25	SS7121410SP	28	29	WP0501016SD	38	10
SS4151215SP	22	65	SS7121410TP	16	53	WP0621016SD	28	16
SS4151215SP	30	31	SS7121410TP	18	53	WP0621016SH	20	36
SS6060210SP	4	53	SS7121610SP	16	43	WP0650876SD	12	12
SS6080340SP	34	31	SS7620750SP	18	69	WP0702026SP	18	72
SS6080410SP	4	77	SS7681650TP	6	19	WP0722316SH	30	36
SS6090510SP	22	48	SS8090670SP	2	41	WP1221016SP	32	5
SS6090560TP	16	3	SS8110310SP	28	26	WP1612616SE	40	19
SS6090620TP	16	38	SS8110410TP	10	38	WP1703001SC	30	26
SS6090660TP	28	7	SS8110510SP	38	25	WS0451040KP	34	38
SS6090670TP	10	6	SS8110520TP	22	51	WS0510002KN	40	16
SS6090810SP	28	23	SS8110710SP	20	9	WS0651310KP	34	37
SS6090810TP	26	49	SS8120740SP	28	21	WS1643202KR	40	20
SS6090910SP	12	41	SS8150710TP	4	42	WT0530002KS	4	64
SS6090910SP	24	40	SS8150710TP	16	28	WZ1250300K0	18	68
SS6110420TP	10	27	SS8151150TP	6	1			
SS6110610TP	4	59	SS8151150TP	24	17			
SS6110640SP	28	27	SS8151550SP	6	32			
SS6110710TP	22	56	SS8152080SP	24	33			
SS6110710TP	32	20	SS8660410SP	28	9			
SS6110810TP	24	38	SS8660610TP	6	46			
SS6111010TP	34	24	SS8660610TP	8	46			
SS6111210SP	6	30	SS8660610TP	12	26			
SS6121220TP	22	71	SS8660610TP	18	58			
SS6121220TP	24	28	SS8660610TP	20	27			
SS6121220TP	28	3	SS8660810TP	10	20			
SS6121610SP	28	20	SS8681130SP	16	41			
SS6121860SP	18	76	SS8681650TP	6	20			
SS6151220SP	18	74	SS9121010TP	26	48			
SS6660610TP	20	29	SS9121410TP	24	36			
SS6661110SP	6	24	SS9661120CP	18	75			
SS6700710SH	36	5	TA0850604R0	2	31			
SS7080510TP	10	7	TA1250406R0	4	48			
SS7081310SP	38	24	TA1250504R0	2	5			