

MODEL : MO-3600 SUBCLASSES

List No : 1102-02

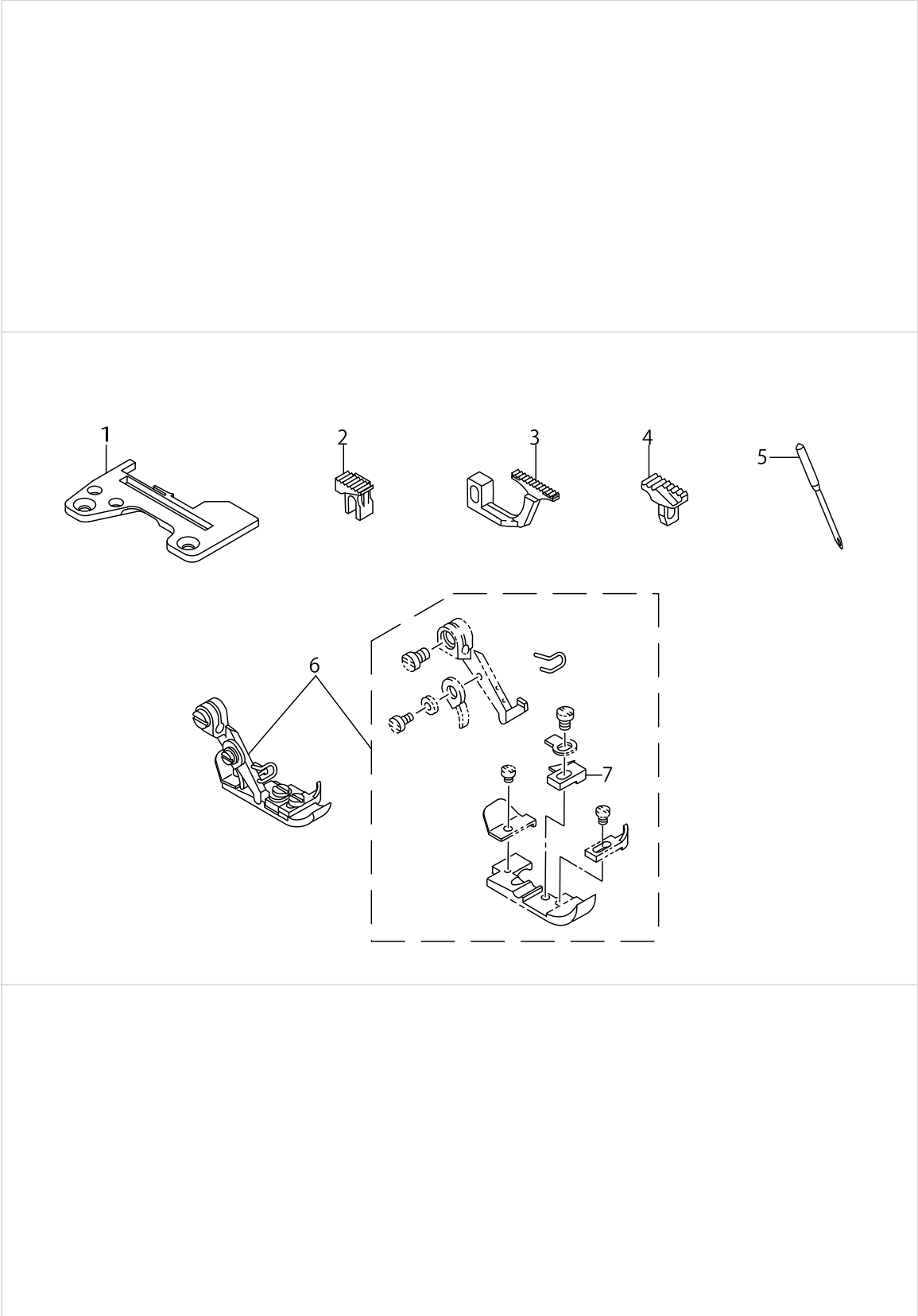
# PARTS LIST

Published:05/12/2017

## CONTENTS

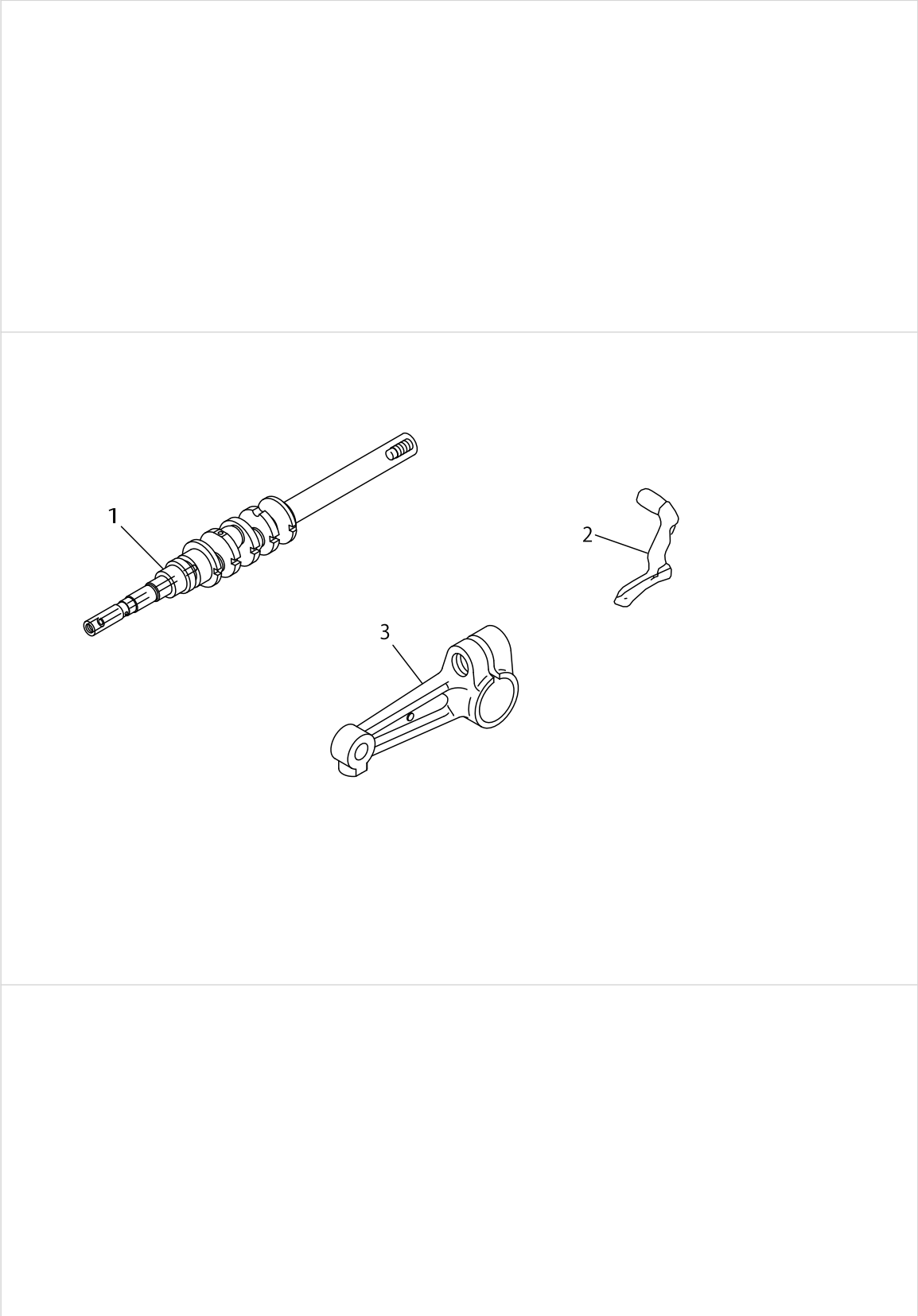
---

MO-3604E-0A5-150/F .....	1
MO-3604E-0E4-40H/F .....	3
MO-3604B-0E4-40H/F/Z173 .....	5
MO-3605E-0E4-41H/F/L121 .....	7
MO-3614E-BE6-20H/F .....	9
MO-3614E-BE6-44H/F/G39/Q141 .....	11
MO-3616E-DE4-20H/FH .....	13
MO-3616E-DE4-40H/F/E3A .....	15
MO-3616E-FF6-40H/F .....	17
MO-3616E-FF6-60H/F .....	19
MO-3643E-FBD6-40H/F .....	21
MO-3645E-DD4-360/F/N077 .....	23
HOW TO MAKE USE OF THIS PARTS LIST .....	27



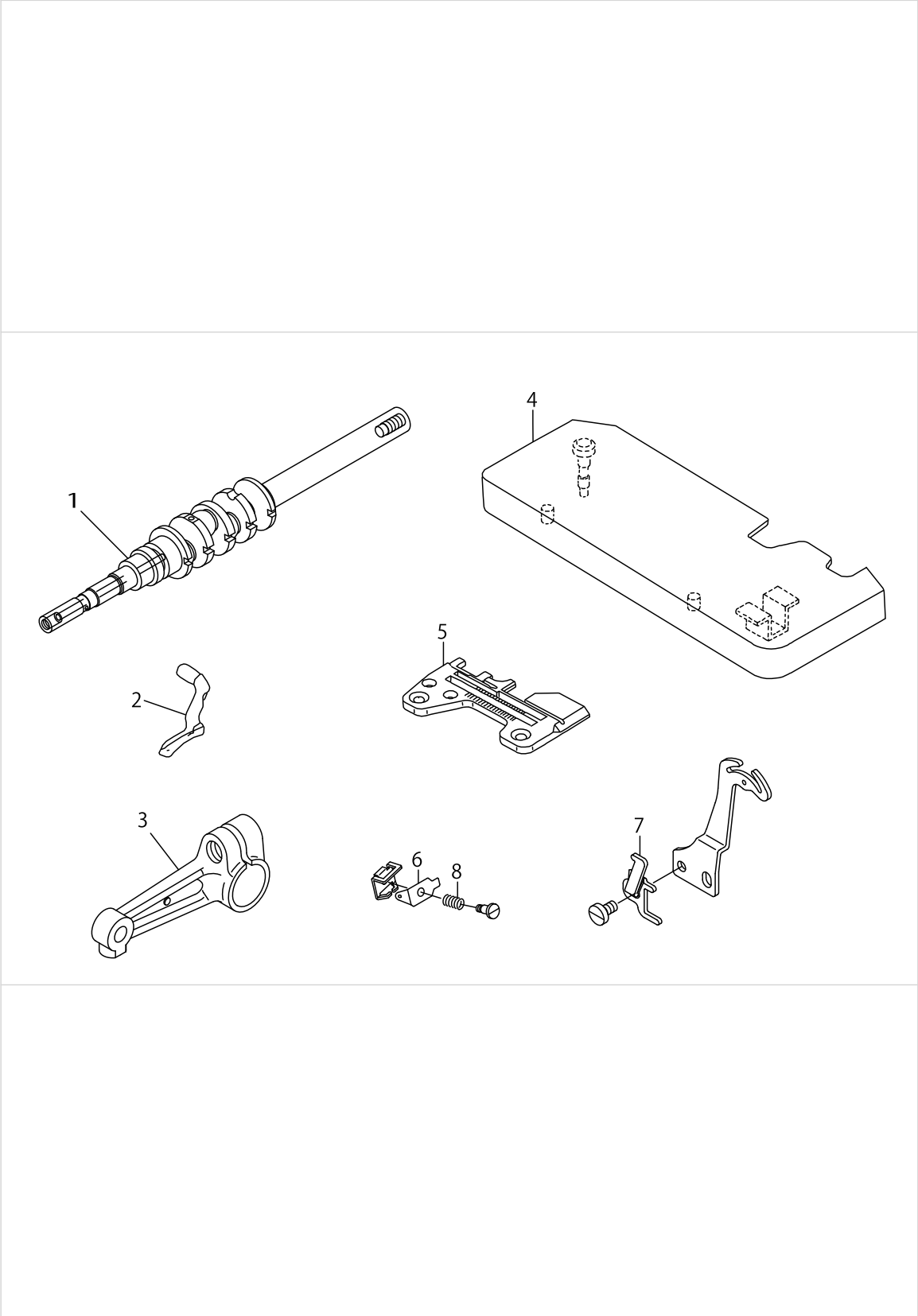
MO-3604E-0A5-150/F

No.	Supply Code	Parts No.	Replacement	Parts name	Remarks	Choice	Step	Level	Cons	Qty	Rep. QTY
1	R	R4100J0AC00	R4100J6AC00	THROAT PLATE						1	1.00
2		11882008		MAIN FEED DOG						1	
3		11885001		DIFFERENTIAL FEED DOG						1	
4		11887007		AUXILIARY FEED DOG						1	
5		MDC100B0800		NEEDLE DCX1 #8						1	
6		11876067		PRESSER FOOT ASM.						1	
7		11792900		STITCH TONGUE				*		1	



MO-3604E-0E4-40H/F

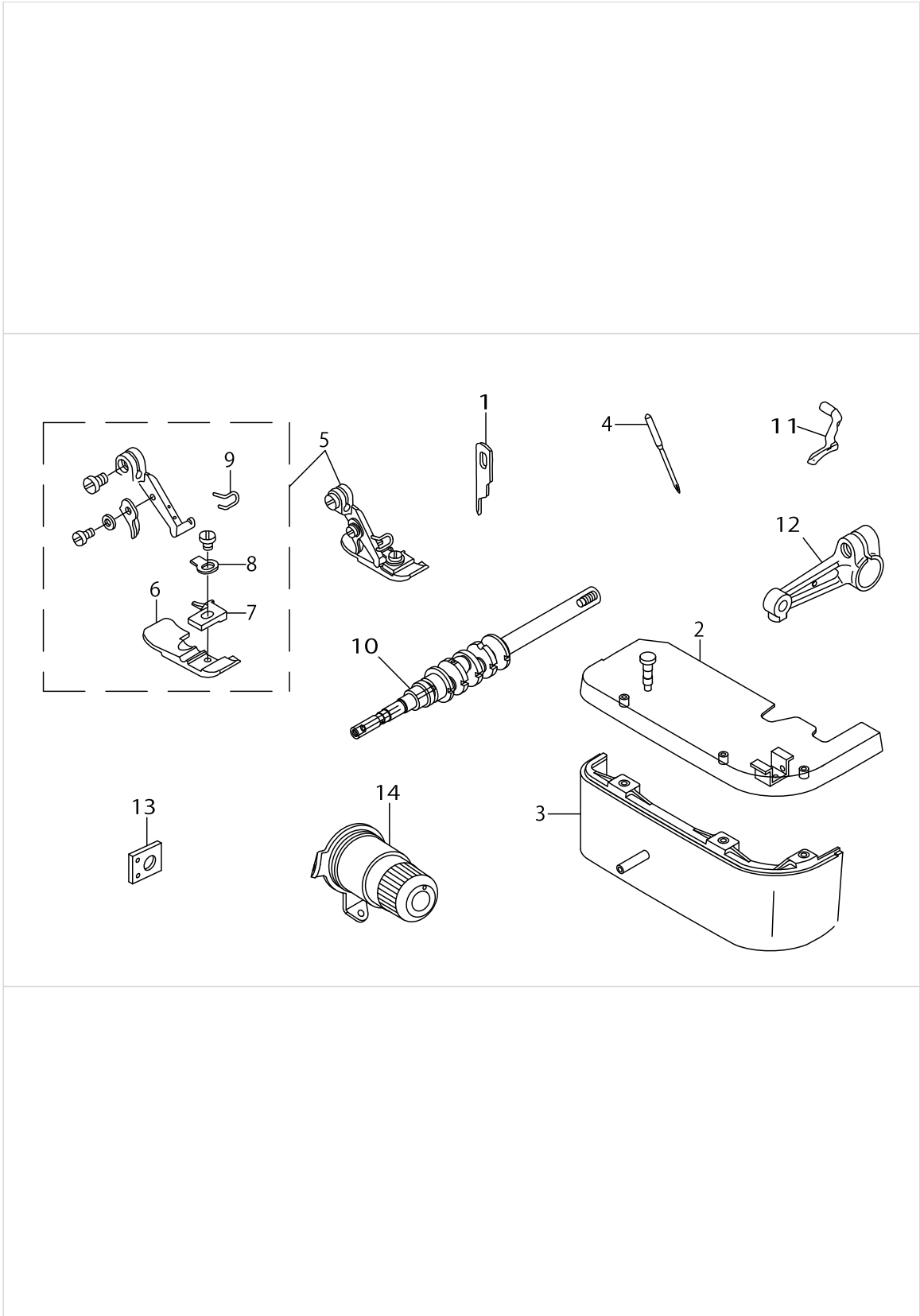
No.	Supply Code	Parts No.	Replacement	Parts name	Remarks	Choice	Step	Level	Cons	Qty	Rep. QTY
1	D	12107207		CRANKSHAFT						1	
2		11991908		UPPER LOOPER						1	
3	D	12284501		LOOPER HOLDER, B						1	



M0-3604B-0E4-40H/F/Z173

No.	Supply Code	Parts No.	Replacement	Parts name	Remarks	Choice	Step	Level	Cons	Qty	Rep. QTY
1	D	12107207		CRANKSHAFT						1	
2		11991908		UPPER LOOPER						1	
3	D	12284501		LOOPER HOLDER, B						1	
4	R	11948783	11922556	CLOTH PLATE ASM.						1	1.00
5		R4200J2ED00		THROAT PLATE						1	
6		12112504		NEEDLE THREAD P- RESSER PLATE C						1	
7		12112603		DIFFERENTIAL FEED CAM						1	
8		12112702		NEEDLE THREAD P- RESSER SPRING B						1	





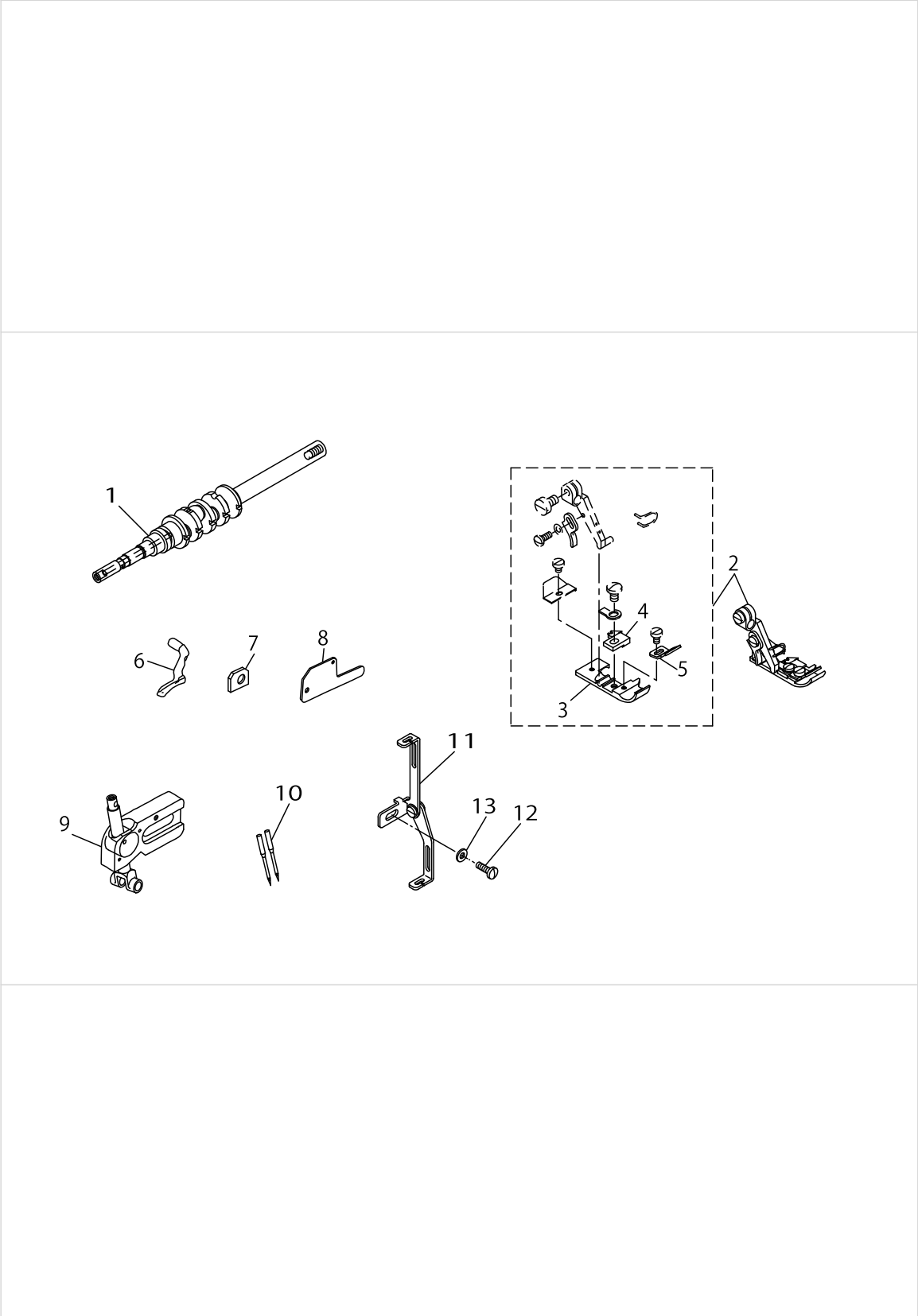
MO-3605E-0E4-41H/F/L121

No.	Supply Code	Parts No.	Replacement	Parts name	Remarks	Choice	Step	Level	Cons	Qty	Rep. QTY
1		11845708		KNIFE						1	
2	D	12104659		CLOTH PLATE ASM.						1	
3		12104709		CLOTHPLATECOVER						1	
4		MDC270B0900		NEEDLE DCX27 #9						1	
5		11992161		PRESSER FOOT ASM.						1	
6	R	11992104	11992161	PRESSER FOOT				*		1	1.00
7		11874807		STITCH TONGUE				*		1	
8		B1508804000		SPRING				*		1	
9		11820701		FINGER GUARD				*		1	
10	D	12107207		CRANKSHAFT						1	
11		11991908		UPPER LOOPER						1	
12	D	12284501		LOOPER HOLDER, B						1	
13	R	11991809	13132006	GAUGE						1	1.00
14	R	12284857	13138359	THREAD TENSION SPRING JUNCTION		A				1	1.00
14	R	12284857	12285904	THREAD TENSION SPRING JUNCTION						1	1.00



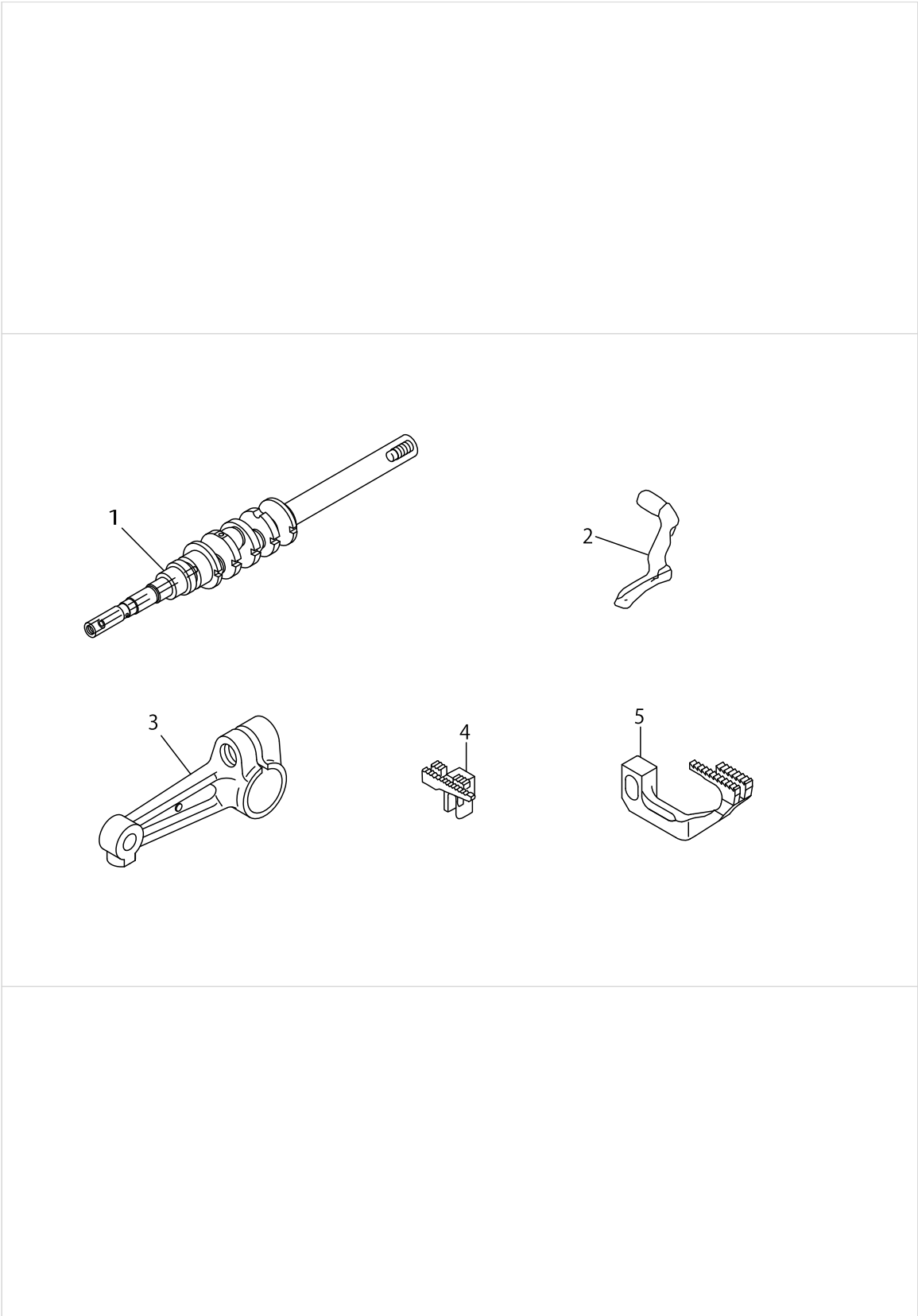
MO-3614E-BE6-20H/F

No.	Supply Code	Parts No.	Replacement	Parts name	Remarks	Choice	Step	Level	Cons	Qty	Rep. QTY
1	D	12107207		CRANKSHAFT						1	
2		12176103		UPPER LOOPER						1	
3		11991601		UPPER LOOPER GUIDE COVER						1	
4	R	11991809	13132006	GAUGE						1	1.00
5	R	12254157	40015637	UPPER LOOPER GUIDE A ASM.						1	1.00
6		12171500		MAIN FEED DOG						1	
7		12172003		DIFF,FEED DOG						1	



## MO-3614E-BE6-44H/F/G39/Q141

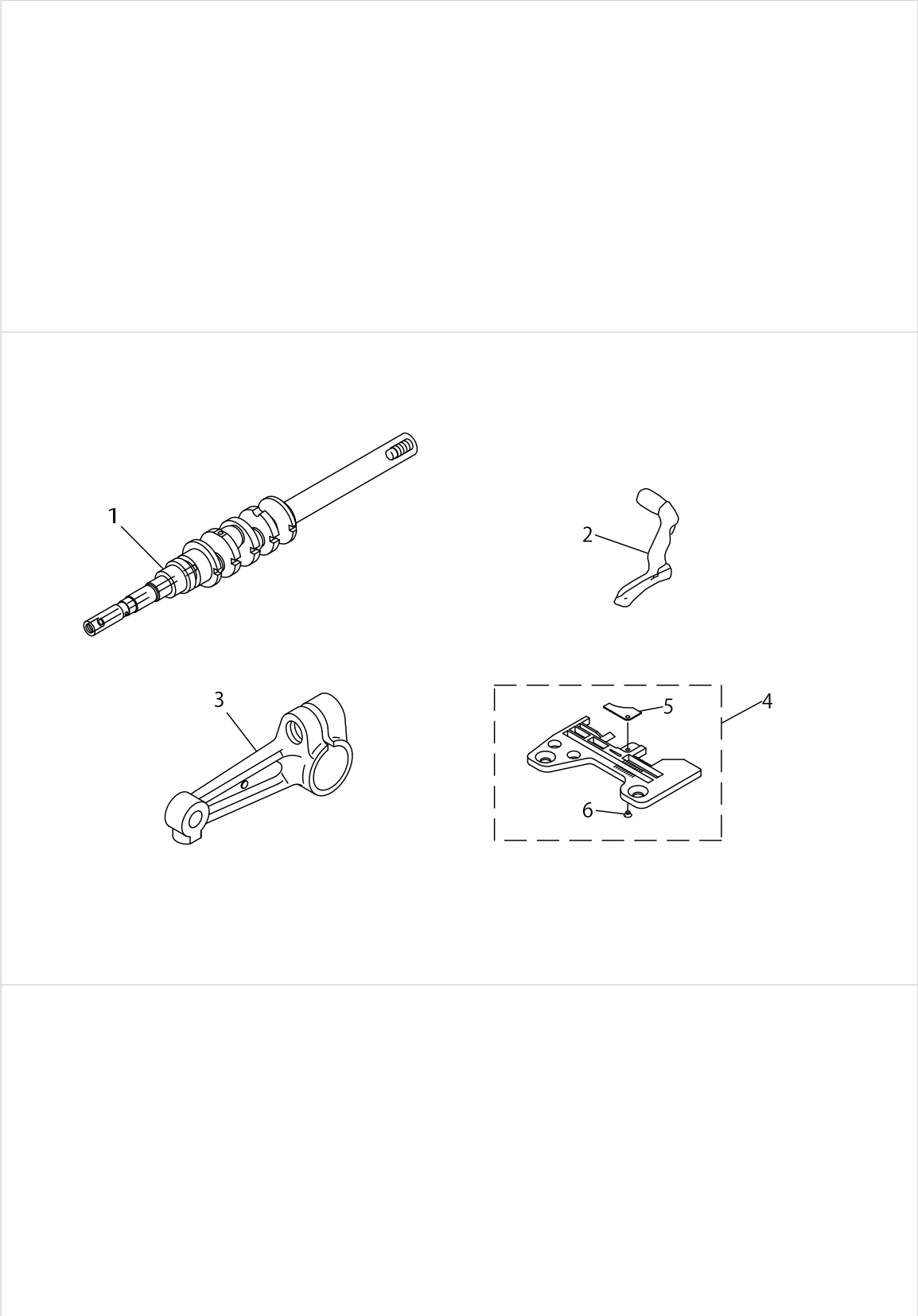
No.	Supply Code	Parts No.	Replacement	Parts name	Remarks	Choice	Step	Level	Cons	Qty	Rep. QTY
1	D	12107207		CRANKSHAFT						1	
2		12152963		PRESSER FOOT ASM.						1	
3		12158002		PRESSER FOOT				*		1	
4		12160305		STITCH TONGUE				*		1	
5		12160909		TAPE GUIDE				*		1	
6		12176103		UPPER LOOPER						1	
7	R	11991809	13132006	GAUGE						1	1.00
8		11991601		UPPER LOOPER GUIDE COVER						1	
9	R	12254157	40015637	UPPER LOOPER GUIDE A ASM.						1	1.00
10		MDC270B1400		NEEDLE DCX27 #14						2	
11	R	MAQ141000A0	MAQ141000B0	TAPE GUIDE ASM.						1	1.00
12		SS7091110TP		SCREW 9/64-40 L=10.5						1	
13		WP0371016SD		WASHER 3.7X8X1						1	



MO-3616E-DE4-20H/FH

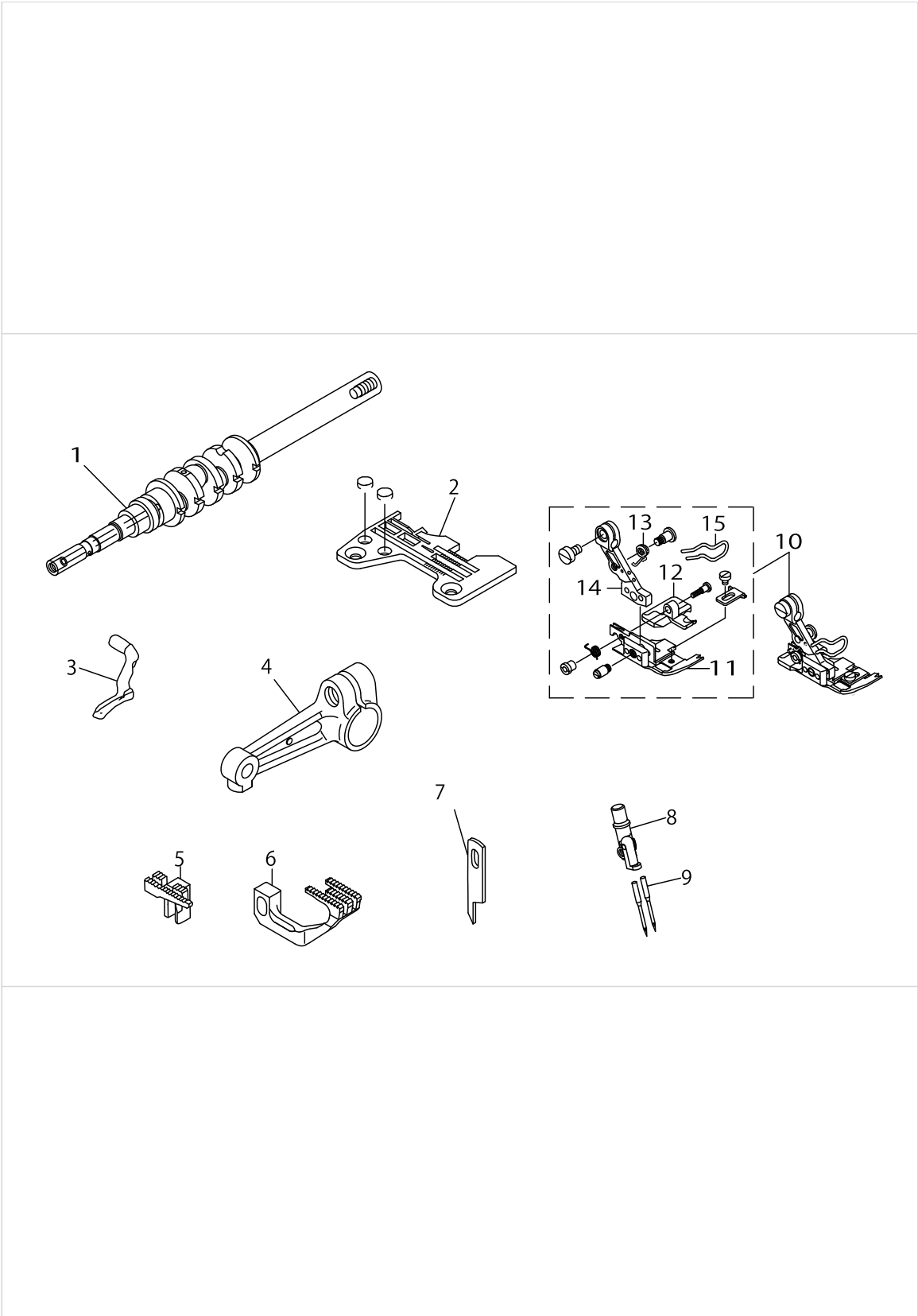
No.	Supply Code	Parts No.	Replacement	Parts name	Remarks	Choice	Step	Level	Cons	Qty	Rep. QTY
1	D	12107207		CRANKSHAFT						1	
2		11991908		UPPER LOOPER						1	
3	D	12284501		LOOPER HOLDER, B						1	
4		12171203		MAIN FEED DOG						1	
5		12174108		SUB-FEED DOG						1	





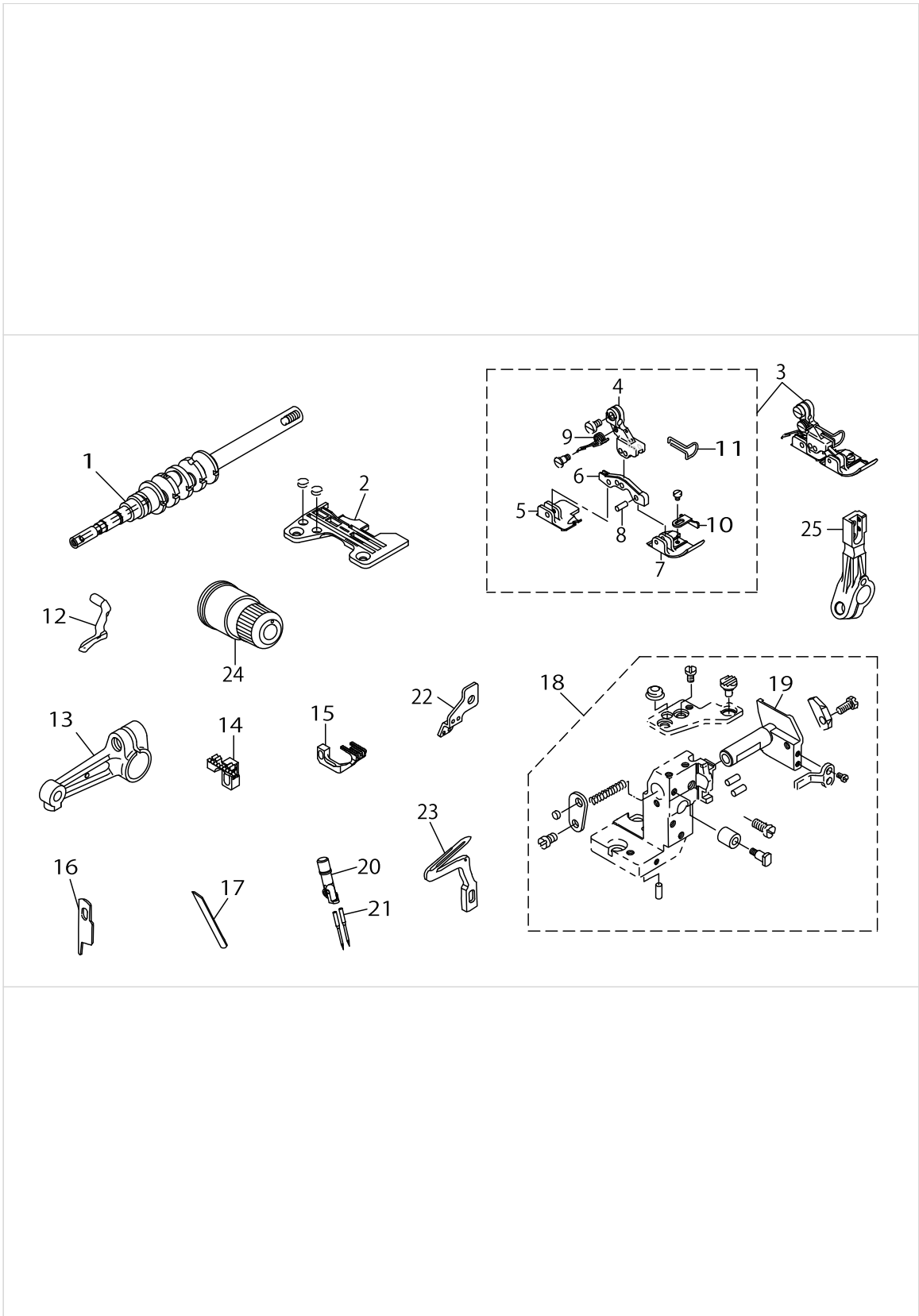
MO-3616E-DE4-40H/F/E3A

No.	Supply Code	Parts No.	Replacement	Parts name	Remarks	Choice	Step	Level	Cons	Qty	Rep. QTY
1	D	12107207		CRANKSHAFT						1	
2		11991908		UPPER LOOPER						1	
3	D	12284501		LOOPER HOLDER, B						1	
4	R	R4508J0ED0C	R4508J6ED0C	THROAT PLATE						1	1.00
5		12145207		THROAT PLATE CLICK				*		1	
6		SS1060210TP		SCREW 3/32-56 L=2.2				*		1	



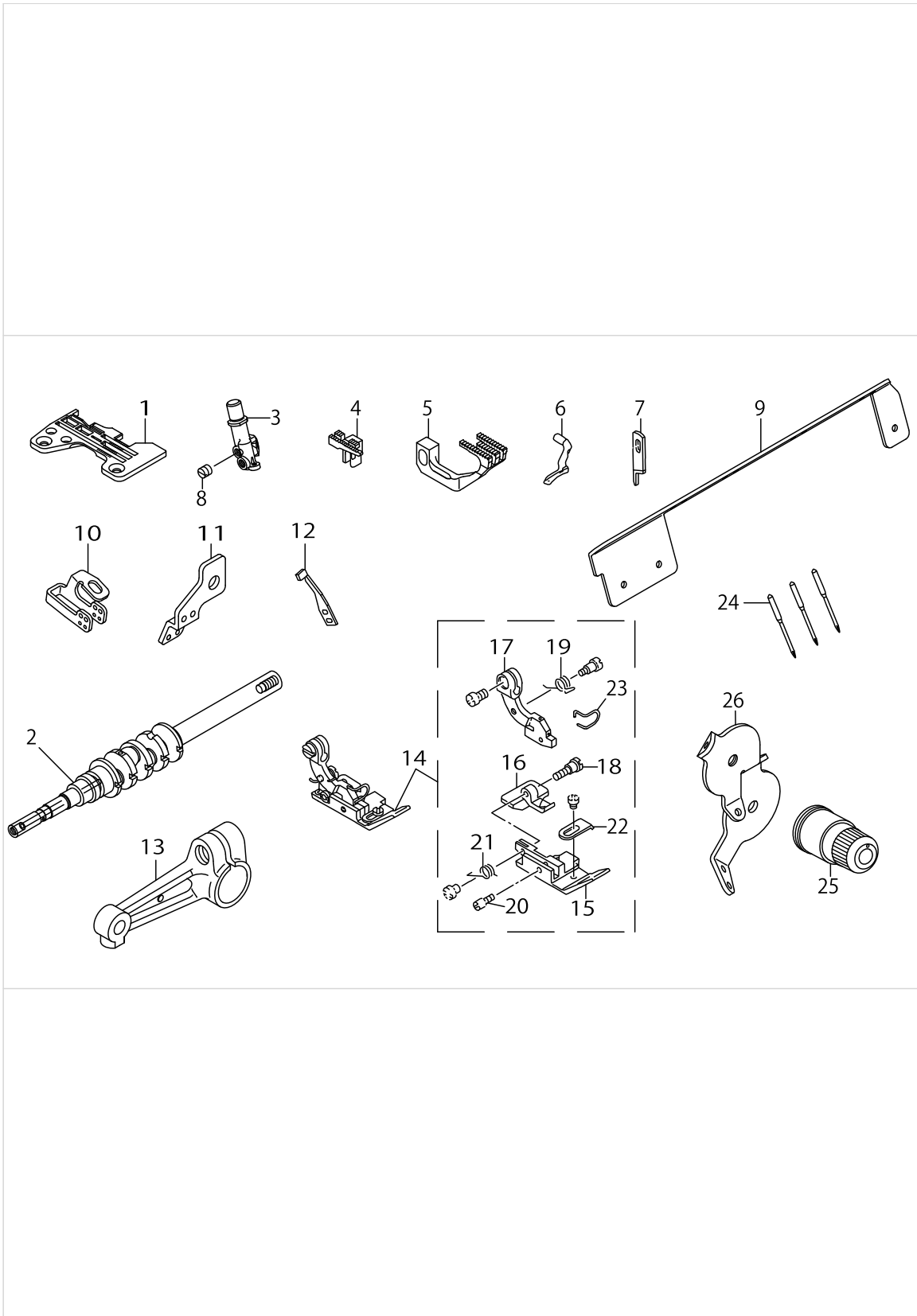
MO-3616E-FF6-40H/F

No.	Supply Code	Parts No.	Replacement	Parts name	Remarks	Choice	Step	Level	Cons	Qty	Rep. QTY
1	D	12107207		CRANKSHAFT						1	
2	R	R4612J0FD00	R4612J6FD00	THROAT PLATE						1	1.00
3		11991908		UPPER LOOPER						1	
4	D	12284501		LOOPER HOLDER, B						1	
5		11884004		MAIN FEED DOG						1	
6		12173308		DIFFERENTIAL FEED DOG						1	
7		11845609		KNIFE						1	
8		12257507		NEEDLE CLAMP, CHAIN LOOPER						1	
9		MDC270B1600		NEEDLE DCX27 #16						2	
10		12154266		PRESSER FOOT ASM.						1	
11	R	12162707	12154266	PRESSER FOOT				*		1	1.00
12	R	12165304	12154266	REARPRESSERFOOT				*		1	1.00
13		12168001		PRESSER FOOT ARM SPRING, (B)				*		1	
14		12157004		PRESSER FOOT HINGE				*		1	
15		12168209		FINGER GUARD				*		1	



## MO-3616E-FF6-60H/F

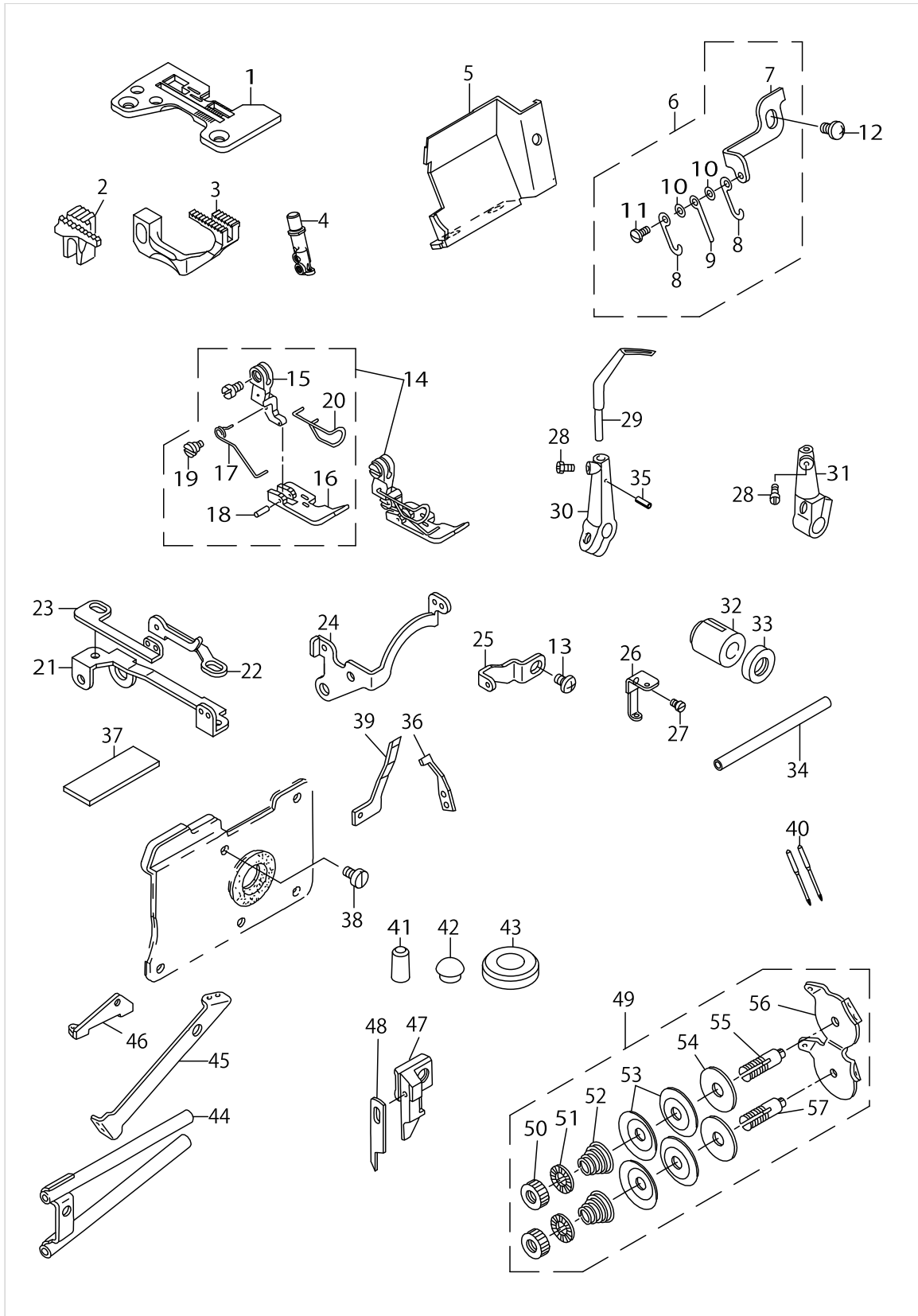
No.	Supply Code	Parts No.	Replacement	Parts name	Remarks	Choice	Step	Level	Cons	Qty	Rep. QTY
1		12107306		CRANKSHAFT						1	
2	R	R4612J0HK00	R4612J6HK00	THROAT PLATE						1	1.00
3		12155560		PRESSER FOOT ASM.						1	
4	R	12157301	12157319	PRESSER FOOT HINGE ARM				*		1	1.00
5		12165908		REARPRESSERFOOT				*		1	
6		12168407		PRESSER FOOT HINGE				*		1	
7	R	12164000	12155560	PRESSER FOOT				*		1	1.00
8		11930708		PRESSER FOOT HINGE PIN				*		3	
9		12168506		PRESSER FOOT ARM SPRING				*		1	
10		12168605		CLOTH GUIDE				*		1	
11		12168704		FINGER GUARD				*		1	
12		12176202		UPPER LOOPER						1	
13	D	12284501		LOOPER HOLDER, B						1	
14		12171104		MAIN FEED DOG						1	
15		12174207		DIFFERENTIAL FEED DOG						1	
16		12004909		KNIFE						1	
17		11566502		LOWER KNIFE						1	
18	D	12257465		LOWER KNIFE FITTING BASE						1	
19	D	12133500		LOWER KNIFE SLIDE STUD				*		1	
20		12150702		NEEDLE CLAMP, CHAIN LOOPER						1	
21		MDC270B2100		NEEDLE DCX27 #21						2	
22		12112801		TAKE-UP LEVER GUIDE						1	
23		11999802		LOWER LOOPER						1	
24	R	12255451	13140652	THREAD TENSION SPRING ASM.						2	1.00
25		12273900		LOOWER LOOPER SUPPORT ARM						1	



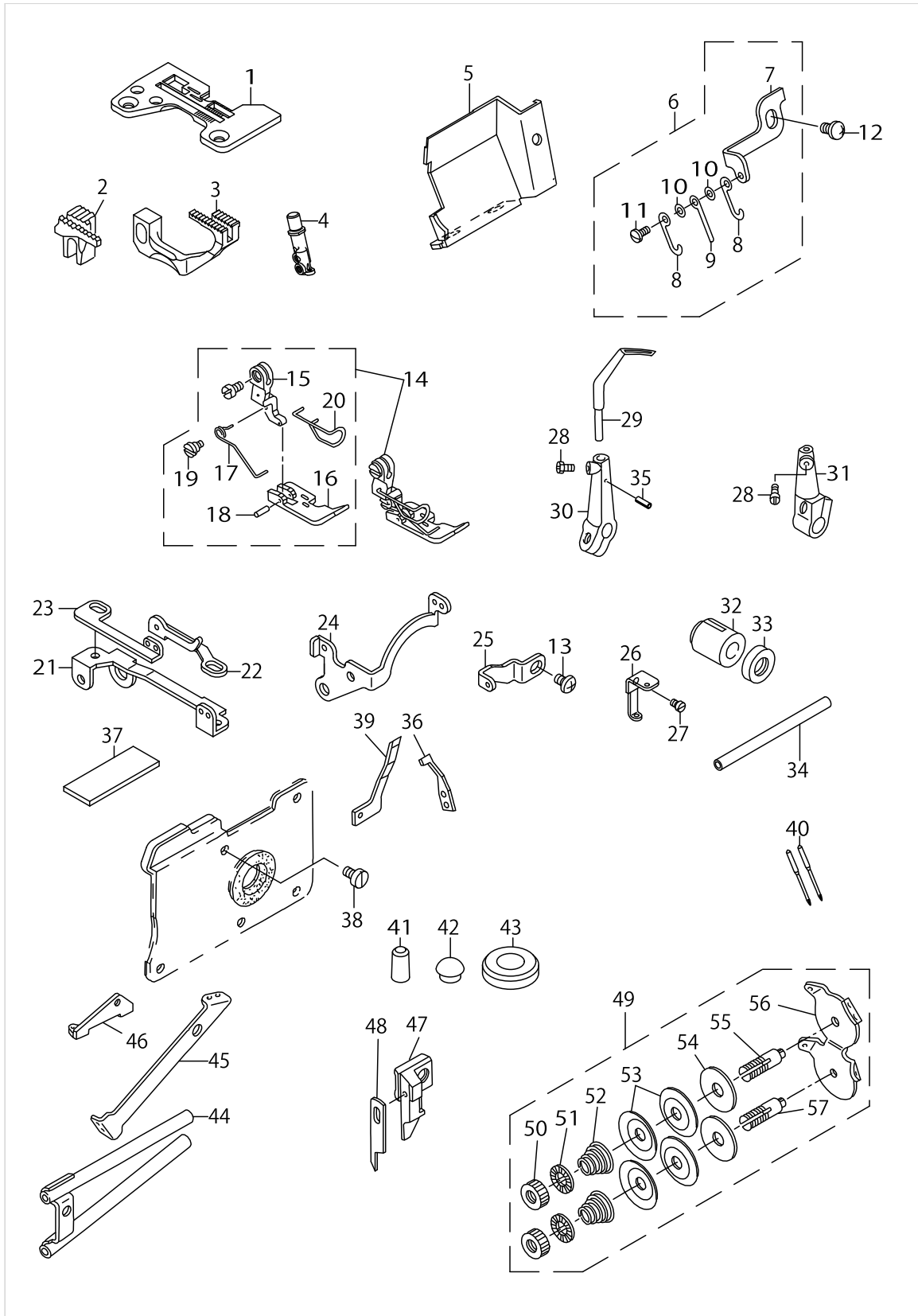
MO-3643E-FBD6-40H/F

No.	Supply Code	Parts No.	Replacement	Parts name	Remarks	Choice	Step	Level	Cons	Qty	Rep. QTY
1	R	R4612J0DE01	R4612J6DE01	THROAT PLATE						1	1.00
2	D	12107207		CRANKSHAFT						1	
3		12275004		NEEDLE CLAMP CHAIN LOOPER.						1	
4		11884004		MAIN FEED DOG						1	
5		12173308		DIFFERENTIAL FEED DOG						1	
6		12176004		UPPER LOOPER						1	
7		11845609		KNIFE						3	
8		SS8080310TP		SCREW 1/8-44 L=2.8						1	
9	R	12274304	12288502	THREAD GUIDE(43)						1	1.00
10		12146403		NEEDLE THREAD G- UIDE, 3-NEEDLE						1	
11	R	12281804	13111604	TAKE-UP LEVER G- UIDE, 2-NEEDLE						1	1.00
12		11999406		NEEDLE HOLDER						1	
13	D	12284501		LOOPER HOLDER, B						1	
14		11878063		PRESSER FOOT ASM.						1	
15	R	B1507843F00	B1507843FB0	PRESSER FOOT				*		1	1.00
16		11875507		REARPRESSERFOOT				*		1	
17		11872207		PRESSER FOOT HINGE				*		1	
18		B1511816000		HINGE SCREW				*		1	
19		B151581600B		PRESSER FOOT ARM SPRING B				*		1	
20		B1510816000		HINGE PIN				*		1	
21		B1512816000		SPRING, FOR REAR PRESSER FOOT				*		1	
22		B1530816D00		AUXILIARY STOPPER				*		1	
23		11820800		FINGER GUARD				*		1	
24		MDC270B1100		NEEDLE DCX27 #11						3	
25	R	12284758	13137559	THREAD TENSION SPRING JUNCTION		A				1	1.00
25	R	12284758	12285904	THREAD TENSION SPRING JUNCTION						1	1.00
26		12255108		THREAD GUIDE						1	





No.	Supply Code	Parts No.	Replacement	Parts name	Remarks	Choice	Step	Level	Cons	Qty	Rep. QTY
1		R4808J0DE00		THROAT PLATE						1	
2		11884202		MAIN FEED DOG						1	
3		12173803		DIFFERENTIAL FEED DOG						1	
4		12275103		NEEDLE CLAMP CHAIN LOOPER.						1	
5		12275301		CLOTH WASTE COVER						1	
6		12145652		CHAIN LOOPER THREAD TAKE-UP						1	
7		12145702		THREAD TAKE-UP FITTING BASE				*		1	
8	R	B1427816000	13112404	NEEDLE THREAD TAKE-UP LEVER A				*		2	1.00
9		B1428816000		NEEDLE THREAD TAKE-UP LEVER B				*		1	
10		WP0250516SD		WASHER 2.5X6X0.5				*		2	
11		SS7060510SP		SCREW 3/32-56 L=4.8				*		1	
12		SM4040655SP		SCREW M4 L=6						1	
13		SS4110515SP		SCREW 11/64-40 L=5				*		1	
14	D	11881661		PRESSER FOOT ASM.						1	
15		11872405		PRESSER FOOT HINGE				*		1	
16		11873601		PRESSER FOOT				*		1	
17		11892106		PRESSER SPRING				*		1	
18		B1511357000		PIN				*		1	
19		SD0370401SP		HINGE SCREW D= 3.70 H= 4.0				*		1	
20		11894706		FINGER GUARD				*		1	
21		12146007		THREAD GUIDE BASE						1	
22		12146106		THREAD GUIDE A						1	
23		12146205		THREAD GUIDE B						1	
24		12146304		THREAD GUIDE						1	
25		12145801		CHAIN LOOPER THREAD GUIDE						1	
26		12145900		NEEDLE THREAD GUIDE						1	
27		SS6060340SP		SCREW 3/32-56 L=2.5						1	
28		SS9090610TP		SCREW 9/64-40 L=5.5						2	
29		11999604		DOUBLE-RING LOOPER						2	
30		B211784500A		CHAIN LOOPER SUPPORT ARM A						1	
31		B211784500B		CHAIN LOOPER SUPPORT ARM B						1	
32		B2110845000		BUSHING, FRONT						1	
33		B2121845000		OIL SEAL						1	
34		B2109816000		CHAIN LOOPER SHAFT						1	
35		PS0200062KH		SPRING PIN 2X6						1	
36		11891009		NEEDLE GUARD						1	
37		B2528845000		CHIP GUARD PLATE						1	
38	R	SS6090630SP	SS6090630TP	SCREW 9/64-40 L=6						1	1.00
39		11890902		NEEDLE GUARD						1	
40		MDC270B1400		NEEDLE DCX27 #14						2	
41		TA0290601M0		PLUG D=2.9X3.2 L=6						1	
42		TA0570301M0		PLUG D=5.7X6.1 L=3						1	
43		TA1701002R0		RUBBER PLUG						1	
44		11893054		LOOPER THREAD GUIDE TUBE ASM.						1	
45		11893104		LOOPER THREAD GUIDE TUBE GUIDE						1	



MO-3645E-DD4-360/F/N077

No.	Supply Code	Parts No.	Replacement	Parts name	Remarks	Choice	Step	Level	Cons	Qty	Rep. QTY
46	D	B240284500B		LOOPER THREAD G- UIDE TUBE GUIDE	FOR T039,T040					1	
47	D	11896206		UPPER KNIFE SUPPORT						1	
48		11845609		KNIFE						1	
49		11892957		TENSION CONTROLLER ASM.						1	
50		B2314019000		TENSION POST NUT				*		2	
51		B3120125000		ROTATING STOPPER				*		2	
52		B2017372000		TENSION SPRING NO.1				*		2	
53	R	B3126012000	22921506	THREAD TENSION DISK				*		4	1.00
54	R	B3120352000	13139902	THREAD TENSION SPRING FELT				*		2	1.00
55	R	11550803	13139555	THREAD TENSION POST				*		1	1.00
56		11892809		THREAD GUIDE				*		1	
57	D	11892908		THREAD TENSION POST				*		1	

## HOW TO MAKE USE OF THIS PARTS LIST

1.As to "#01" and "#02" refer to the "Note" given at the bottom of the respective pages.

2.Codes on the "Qty" column

- Each numeral indicates the number of parts required.
- "0.1" and "2.5" indicate the length (in meters) of the respective parts.

3.Parentheses mean that the corresponding part is a subpart that constructs an assembly part.

4.Dotted lines on the Figures indicate assembly parts.

1. リストページの# 0 1、# 0 2の印は、ページ下の"注記"の説明を参照下さい。
2. 数量欄の数字は、個数を表し、0. 1、2. 5等の数値は、長さ（単位メートル）を表します。
3. 数量欄の（ ）は、組部品を構成している子部品であることを意味します。
4. イラストページの-----枠は、組構成であることを意味します。

# NUMERICAL INDEX OF PARTS

PART NO	PAGE	REF NO.	PART NO	PAGE	REF NO.	PART NO	PAGE	REF NO.
11550803	26	55	11991908	18	3	12165304	18	12
11566502	20	17	11992104	8	6	12165908	20	5
11792900	2	7	11992161	8	5	12168001	18	13
11820701	8	9	11999406	22	12	12168209	18	15
11820800	22	23	11999604	24	29	12168407	20	6
11845609	18	7	11999802	20	23	12168506	20	9
11845609	22	7	12004909	20	16	12168605	20	10
11845609	26	48	12104659	8	2	12168704	20	11
11845708	8	1	12104709	8	3	12171104	20	14
11872207	22	17	12107207	4	1	12171203	14	4
11872405	24	15	12107207	6	1	12171500	10	6
11873601	24	16	12107207	8	10	12172003	10	7
11874807	8	7	12107207	10	1	12173308	18	6
11875507	22	16	12107207	12	1	12173308	22	5
11876067	2	6	12107207	14	1	12173803	24	3
11878063	22	14	12107207	16	1	12174108	14	5
11881661	24	14	12107207	18	1	12174207	20	15
11882008	2	2	12107207	22	2	12176004	22	6
11884004	18	5	12107306	20	1	12176103	10	2
11884004	22	4	12112504	6	6	12176103	12	6
11884202	24	2	12112603	6	7	12176202	20	12
11885001	2	3	12112702	6	8	12254157	10	5
11887007	2	4	12112801	20	22	12254157	12	9
11890902	24	39	12133500	20	19	12255108	22	26
11891009	24	36	12145207	16	5	12255451	20	24
11892106	24	17	12145652	24	6	12257465	20	18
11892809	26	56	12145702	24	7	12257507	18	8
11892908	26	57	12145801	24	25	12273900	20	25
11892957	26	49	12145900	24	26	12274304	22	9
11893054	24	44	12146007	24	21	12275004	22	3
11893104	24	45	12146106	24	22	12275103	24	4
11894706	24	20	12146205	24	23	12275301	24	5
11896206	26	47	12146304	24	24	12281804	22	11
11930708	20	8	12146403	22	10	12284501	4	3
11948783	6	4	12150702	20	20	12284501	6	3
11991601	10	3	12152963	12	2	12284501	8	12
11991601	12	8	12154266	18	10	12284501	14	3
11991809	8	13	12155560	20	3	12284501	16	3
11991809	10	4	12157004	18	14	12284501	18	4
11991809	12	7	12157301	20	4	12284501	20	13
11991908	4	2	12158002	12	3	12284501	22	13
11991908	6	2	12160305	12	4	12284758	22	25
11991908	8	11	12160909	12	5	12284857	8	14
11991908	14	2	12162707	18	11	B1427816000	24	8
11991908	16	2	12164000	20	7	B1428816000	24	9

NUMERICAL INDEX OF PARTS

PART NO	PAGE	REF NO.	PART NO	PAGE	REF NO.
B1507843F00	22	15	SS9090610TP	24	28
B1508804000	8	8	TA0290601M0	24	41
B1510816000	22	20	TA0570301M0	24	42
B1511357000	24	18	TA1701002R0	24	43
B1511816000	22	18	WP0250516SD	24	10
B1512816000	22	21	WP0371016SD	12	13
B151581600B	22	19			
B1530816D00	22	22			
B2017372000	26	52			
B2109816000	24	34			
B2110845000	24	32			
B211784500A	24	30			
B211784500B	24	31			
B2121845000	24	33			
B2314019000	26	50			
B240284500B	26	46			
B2528845000	24	37			
B3120125000	26	51			
B3120352000	26	54			
B3126012000	26	53			
MAQ141000A0	12	11			
MDC100B0800	2	5			
MDC270B0900	8	4			
MDC270B1100	22	24			
MDC270B1400	12	10			
MDC270B1400	24	40			
MDC270B1600	18	9			
MDC270B2100	20	21			
PS0200062KH	24	35			
R4100J0AC00	2	1			
R4200J2ED00	6	5			
R4508J0ED0C	16	4			
R4612J0DE01	22	1			
R4612J0FD00	18	2			
R4612J0HK00	20	2			
R4808J0DE00	24	1			
SD0370401SP	24	19			
SM4040655SP	24	12			
SS1060210TP	16	6			
SS4110515SP	24	13			
SS6060340SP	24	27			
SS6090630SP	24	38			
SS7060510SP	24	11			
SS7091110TP	12	12			
SS8080310TP	22	8			