

MODEL : AMS-210DHL/6100

List No : 1251-01

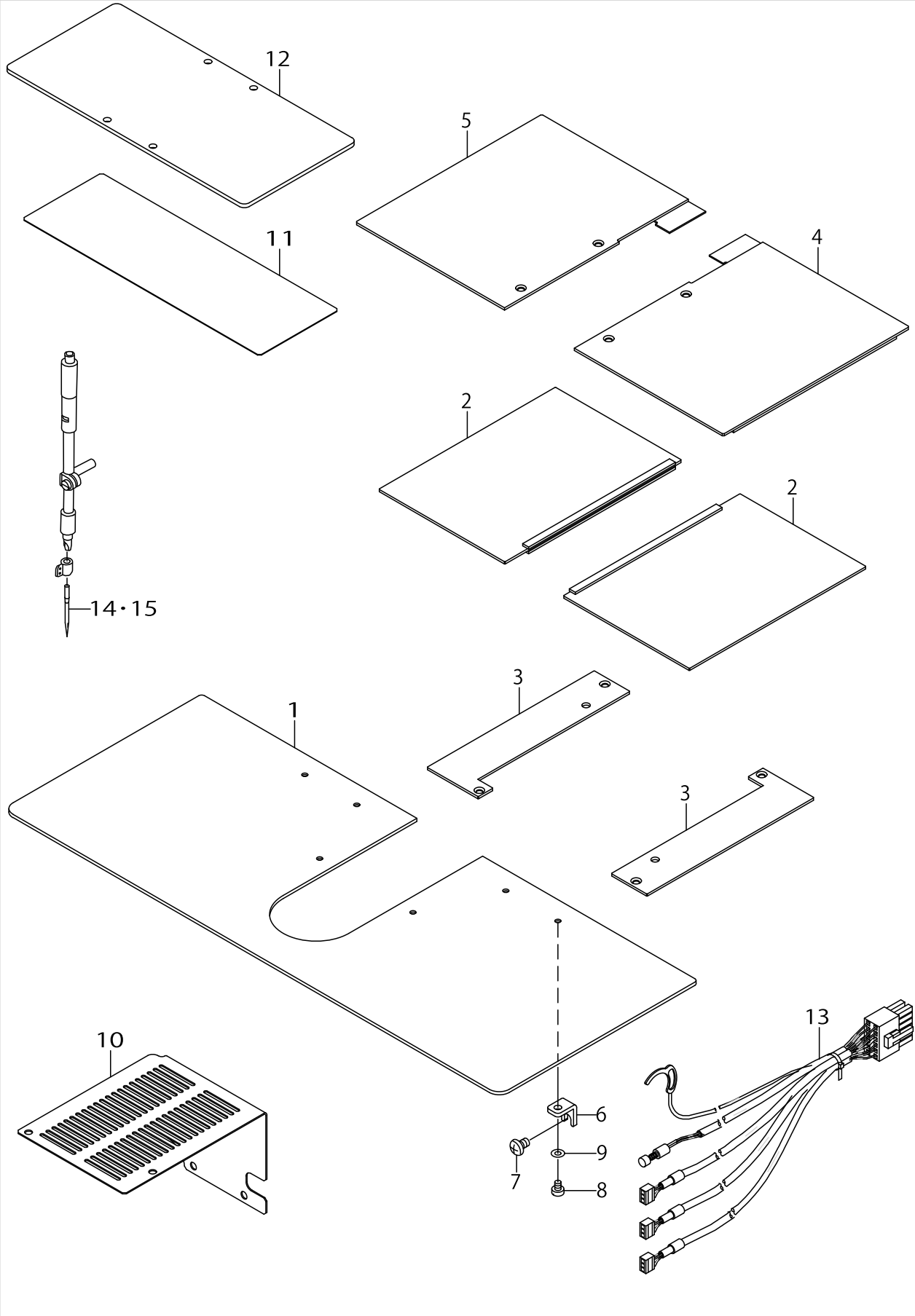
PARTS LIST

Published:05/12/2017

CONTENTS

EXCLUSIVE PARTS FOR AMS-210DHL-6100/-6100P (1).....	1
EXCLUSIVE PARTS FOR AMS-210DHL-6100/-6100P (2).....	3
EXCLUSIVE PARTS FOR AMS-210DHL-6100/-6100P (3).....	5
HOW TO MAKE USE OF THIS PARTS LIST	7

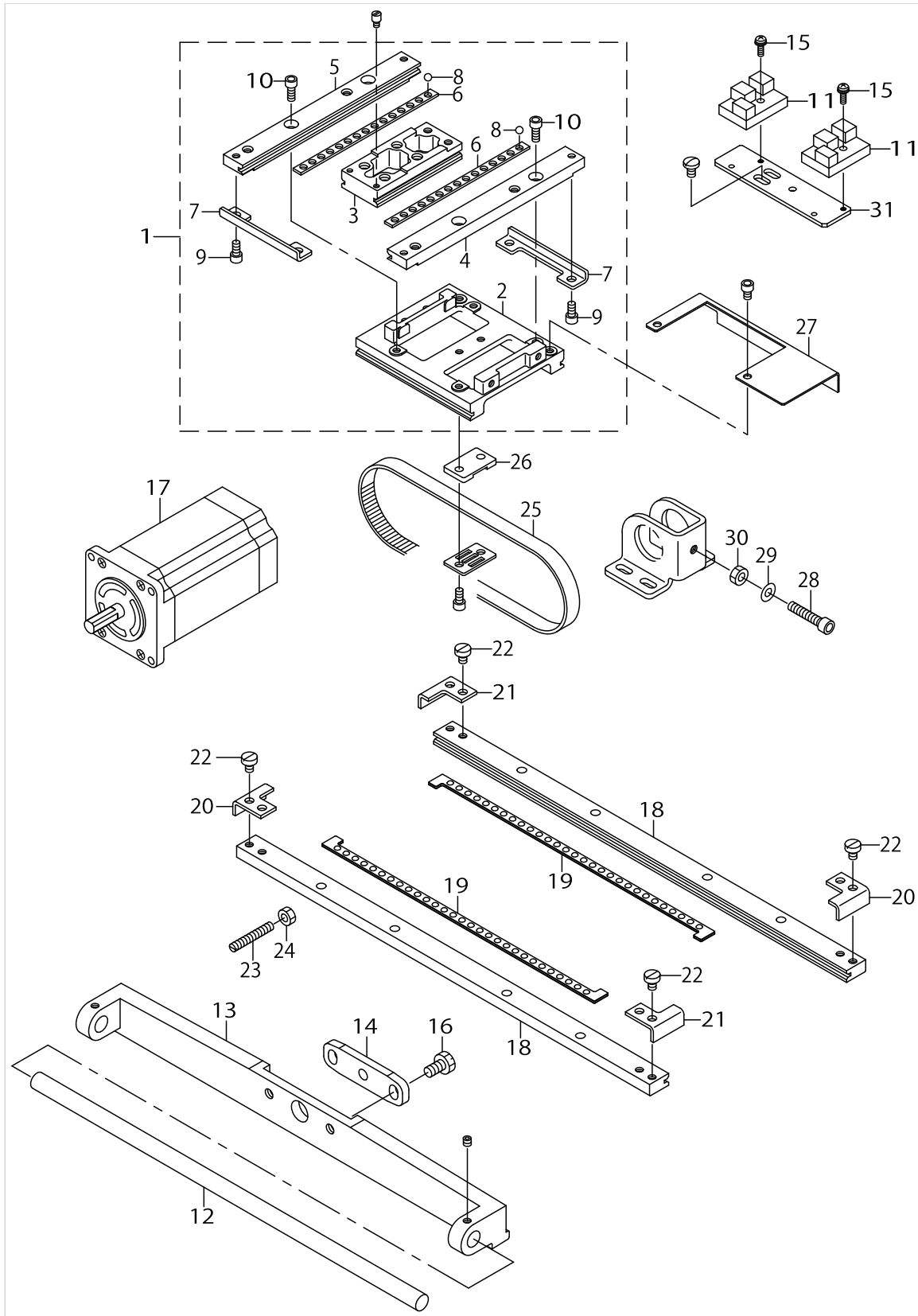
EXCLUSIVE PARTS FOR AMS-210DHL-6100/-6100P (1)



EXCLUSIVE PARTS FOR AMS-210DHL-6100/-6100P (1)

No.	Supply Code	Parts No.	Replacement	Parts name	Remarks	Choice	Step	Level	Cons	Qty	Rep. QTY
1		D1112D10D0D		NEEDLE PLATE SUPPORT COVER						1	
2		D1109D10DAD		X FEED LOWER COVER ASM.						2	
3		D1108D10D0D		FEED BASE COVER						2	
4		D1110D10DAD		X FEED UPPER COVER ASM.,RIGHT						1	
5		D1118D10DAD		X FEED UPPER COVER ASM.,LEFT						1	
6		D1113D10D0D		COVER SUPPORT						2	
7		SS4150915SP		SCREW 15/64-28 L=9						2	
8		SS6110610TP		SCREW 11/64-40 L=6						2	
9		WP0520656SA		WASHER 5.2X9.5X0.6						2	
10	D	D1106D10D0D		X MOTOR COVER						1	
11	D	B1520210D0A		PRESSER PLATE SHEET (EXTENSION						1	
12		B1522210D0A		PRESSER PLATE AIR TYPE(EXTENSI						1	
13	D	40023442		SENSOR CABLE ASM.,A						1	
14		MDP170B2100		NEEDLE DPX17 #21						1	
15	D	MC372001300		NEEDLE	FOR JE					1	

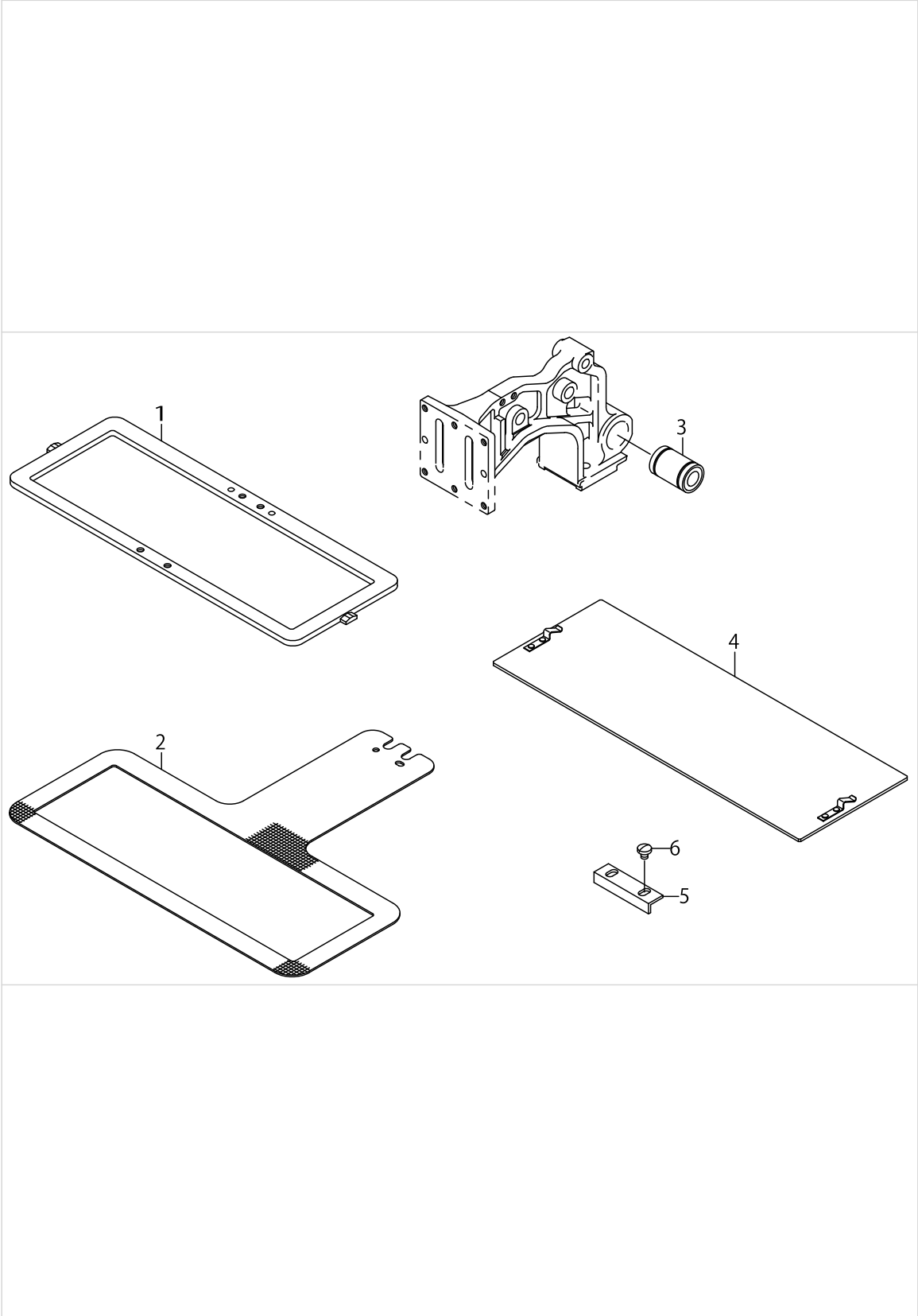
EXCLUSIVE PARTS FOR AMS-210DHL-6100/-6100P (2)



EXCLUSIVE PARTS FOR AMS-210DHL-6100/-6100P (2)

No.	Supply Code	Parts No.	Replacement	Parts name	Remarks	Choice	Step	Level	Cons	Qty	Rep. QTY
1		D2501D10DAD		X-Y TABLE COMPL.						1	
2		D2502D10D0D		RACE TABLE				*		1	
3		B2519210D00		Y REMOVAL RACE				*		1	
4		B2520210D0A		Y FIXED RACE,RIGHT				*		1	
5		B2520210D0B		Y FIXED RACE,LEFT				*		1	
6		B2521210D00		Y BALL GAUGE				*		2	
7		B2522210D00		Y STOPPER				*		2	
8		B2527210000		BALL				*		30	
9		SM6040802TP		SCREW M4X0.7 L=8				*		4	
10		SM6041002TP		SCREW M4 L=10				*		4	
11		HD00057000A		PHOTO SENSOR						2	
12		D2510D10D0D		X GUIDE SHAFT						1	
13		D2511D10D0D		X GUIDE SHAFT SUPPORT						1	
14		D2525D10D0D		Y FEED SHAFT PLATE						1	
15		SL4031081SF		SCREW M3 L=10						2	
16		SS9151120CP		SCREW 15/64-28L=11						2	
17		D2529D10D0D		FEED STEPPING MOTOR						2	
18		B2501210D0A		X FIXED RACE (EXTENSION)						2	
19		B2508210DAB		X BALL GAUGE ASM.(EXTENSION)						2	
20		B2507210D0A		X STOPPER A (EXTENSION)						2	
21		B2507210D0B		X STOPPER B (EXTENSION)						2	
22		SS6110610TP		SCREW 11/64-40 L=6						8	
23		SS8123070SP		SCREW 3/16-28 L=30.0						2	
24		NS6120310SP		NUT 3/16-28						2	
25		B2512210D0A		X TIMING BELT(EXTENSION)						1	
26		B2532210D00		X BELT BASE (EXTENSION)						1	
27		B4007210D0A		X SENSOR SLIT (EXTENSION)						1	
28		SM6052502TP		SCREW M5X0.8 L=25						1	
29		WP0520656SA		WASHER 5.2X9.5X0.6						1	
30		NM6050001SP		NUT M5						1	
31		D4004D10D0D		X SENSOR INSTALLING PLATE						1	

EXCLUSIVE PARTS FOR AMS-210DHL-6100/-6100P (3)



EXCLUSIVE PARTS FOR AMS-210DHL-6100/-6100P (3)

No.	Supply Code	Parts No.	Replacement	Parts name	Remarks	Choice	Step	Level	Cons	Qty	Rep. QTY
1		D2553D10D0D		FEEDING FRAME						1	
2		D2552D10D0D		LOWER PLATE						1	
3		SB710000300		BEARING						1	
4		D2557D10DAD		BLANK ASM.						2	
5		B2592210000		PLASTIC PLATE STOPPER						1	
6		SS7110340SP		SCREW 11/64-40 L= 3.2						2	

HOW TO MAKE USE OF THIS PARTS LIST

1.As to "#01" and "#02" refer to the "Note" given at the bottom of the respective pages.

2.Codes on the "Qty" column

- Each numeral indicates the number of parts required.
- "0.1" and "2.5" indicate the length (in meters) of the respective parts.

3.Parentheses mean that the corresponding part is a subpart that constructs an assembly part.

4.Dotted lines on the Figures indicate assembly parts.

1. リストページの# 0 1、# 0 2の印は、ページ下の"注記"の説明を参照下さい。
2. 数量欄の数字は、個数を表し、0. 1、2. 5等の数値は、長さ（単位メートル）を表します。
3. 数量欄の（ ）は、組部品を構成している子部品であることを意味します。
4. イラストページの-----枠は、組構成であることを意味します。

NUMERICAL INDEX OF PARTS

PART NO	PAGE	REF NO.	PART NO	PAGE	REF NO.
40023442	2	13	SS6110610TP	2	8
B1520210D0A	2	11	SS6110610TP	4	22
B1522210D0A	2	12	SS7110340SP	6	6
B2501210D0A	4	18	SS8123070SP	4	23
B2507210D0A	4	20	SS9151120CP	4	16
B2507210D0B	4	21	WP0520656SA	2	9
B2508210DAB	4	19	WP0520656SA	4	29
B2512210D0A	4	25			
B2519210D00	4	3			
B2520210D0A	4	4			
B2520210D0B	4	5			
B2521210D00	4	6			
B2522210D00	4	7			
B2527210000	4	8			
B2532210D00	4	26			
B2592210000	6	5			
B4007210D0A	4	27			
D1106D10D0D	2	10			
D1108D10D0D	2	3			
D1109D10DAD	2	2			
D1110D10DAD	2	4			
D1112D10D0D	2	1			
D1113D10D0D	2	6			
D1118D10DAD	2	5			
D2501D10DAD	4	1			
D2502D10D0D	4	2			
D2510D10D0D	4	12			
D2511D10D0D	4	13			
D2525D10D0D	4	14			
D2529D10D0D	4	17			
D2552D10D0D	6	2			
D2553D10D0D	6	1			
D2557D10DAD	6	4			
D4004D10D0D	4	31			
HD00057000A	4	11			
MC372001300	2	14-15			
MDP170B2100	2	14-15			
NM6050001SP	4	30			
NS6120310SP	4	24			
SB710000300	6	3			
SL4031081SF	4	15			
SM6040802TP	4	9			
SM6041002TP	4	10			
SM6052502TP	4	28			
SS4150915SP	2	7			