

MODEL : SC-901

List No : 1272-01

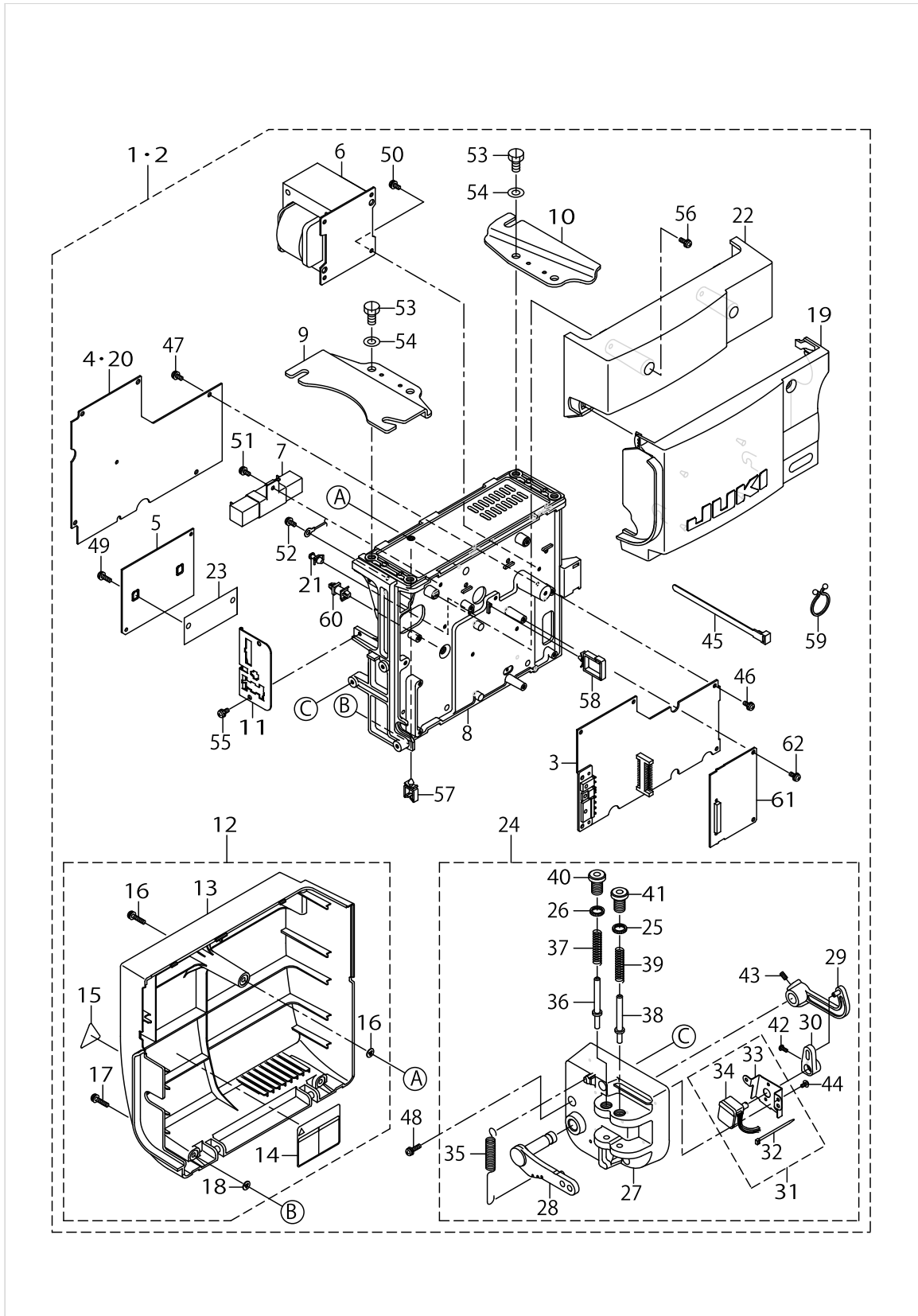
PARTS LIST

Published:05/12/2017

CONTENTS

PSC UNIT COMPONENTS	1
ACCESSORIE PART COMPONENTS.....	5
HOW TO MAKE USE OF THIS PARTS LIST	7

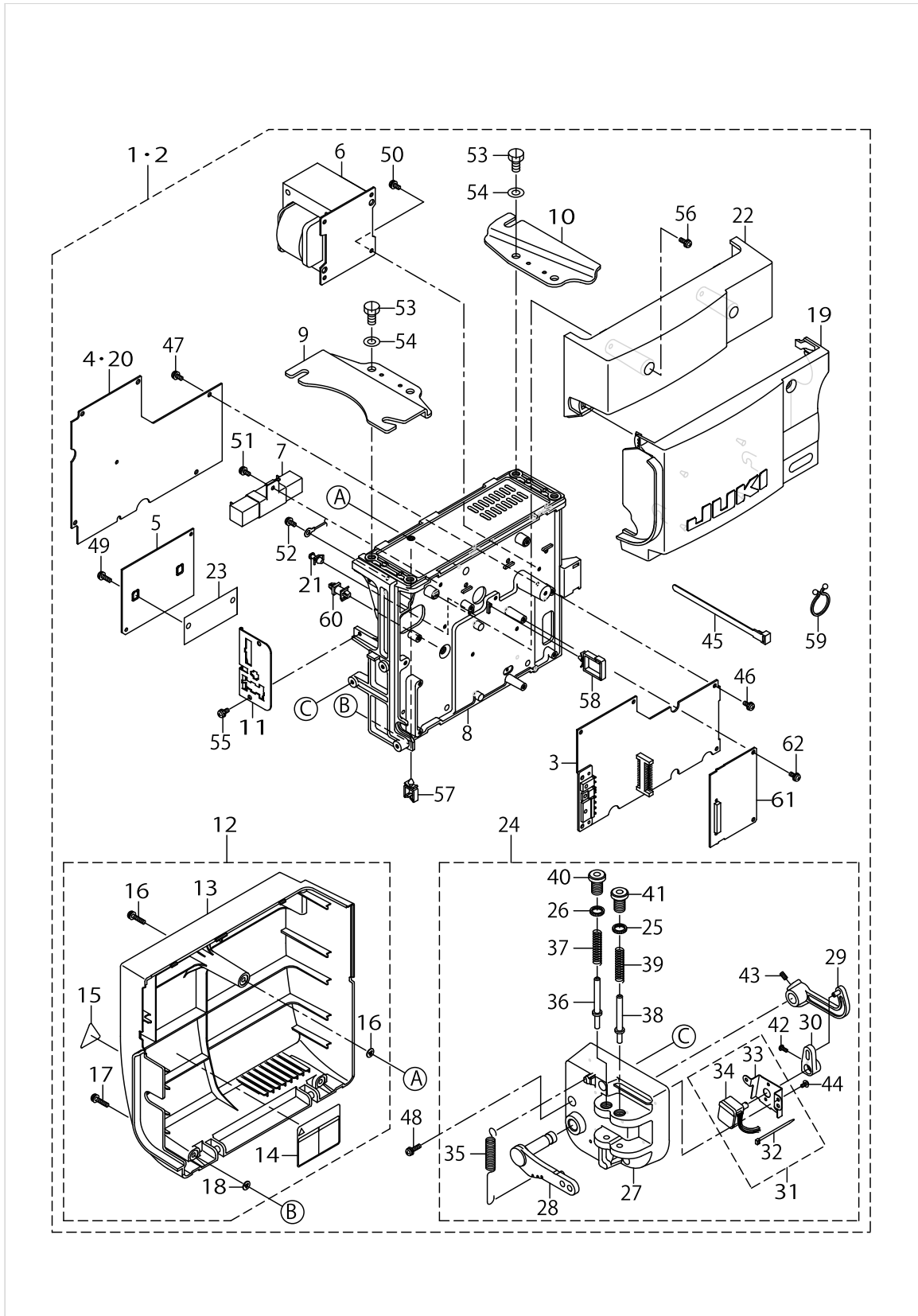
PSC UNIT COMPONENTS



PSC UNIT COMPONENTS

No.	Supply Code	Parts No.	Replacement	Parts name	Remarks	Choice	Step	Level	Cons	Qty	Rep. QTY
1		M2202472BA0		PSC UNIT,EXPORT PFL 220V 3	FOR PFL 2-00~240V 3φ					1	
2		M2202472CA0		PSC UNIT,EXPORT PFL 220V 1	FOR PFL 2-00~240V 1φ					1	
3	D	M8601471DAA		CTL CIRCUIT BOARD DA ASM.				*		1	
4	D	M8602471BA0		PWR CIRCUIT BOARD B ASM.	FOR PFL 2-00~240V 3φ			*		1	
5	D	M8603471AA0		DRV CIRCUIT BOARD A ASM.				*		1	
6		M8501471BA0		POWER TRANSFORMER B ASM.				*		1	
7		M8502461AA0		RESISTOR A ASM.				*		1	
8	D	M3001471000		BOX FRAME				*		1	
9		M3801471000		BOX BRACKET (L)				*		1	
10		M3802471000		BOX BRACKET (R)				*		1	
11		M3803471000		CONNECTOR INSTALLING PLATE				*		1	
12	D	M3401471AAB		REARCOVERABASM.				*		1	
13		M3401471A00		REAR COVER A				*		1	
14		M7002471B00		LABEL				*		1	
15		CM300100001		LABEL				*		1	
16		SL4041891SC		SCREW M4 L=18				*		1	
17		SL4041891SC		SCREW M4 L=18				*		2	
18		M8002430000		STOPPER				*		3	
19	D	M3201472CA0		FRONTCOVERCASM.				*		1	
20	D	M8602471CA0		PWR CIRCUIT BOARD C ASM.	FOR PFL 2-00~240V 1φ			*		1	
21	D	HX00147000E		CIRCUIT BOARD SPACER				*		1	
22	D	M3202471000		TOP COVER				*		1	
23	D	M8801471000		SEAT				*		1	
24	D	M4001461BA0		PEDAL SENSOR B ASM.	FOR PFL			*		1	
25		M2010110000		ADJUST NUT	FOR PFL			*		2	
26		M2010110000		ADJUST NUT	FOR STANDARD			*		1	
27		M4001461000		PEDALSENSORBASE				*		1	
28		M4002461000		PEDAL LEVER				*		1	
29	R	M4004461000	40006204	PEDAL RING				*		1	1.00
30		M4005461000		VOLUME LINK				*		1	
31	D	M4006461AA0		SENSOR FIXED PLATE A ASM.				*		1	
32		EA9500B0100		CABLE BAND				*		1	
33		M4006461000		SENSOR INSTALLING PLATE				*		1	
34	R	M8508461AA0	M4006461AA0	SENSOR A ASM.				*		1	1.00
35		M4007351000		FRONT SPRING				*		1	
36		M4008351000A		SPRING SHAFT A				*		1	
37		M4010351000		SPRING A	FOR STANDARD			*		1	
38		M4009351000A		SPRING SHAFT B	FOR PFL			*		1	
39		M4011351000		SPRING B	FOR PFL			*		2	
40		M4012351000		ADJUST SCREW	FOR STANDARD			*		1	
41		M4012351000		ADJUST SCREW	FOR PFL			*		2	
42		SM4030801SF		SCREW M3X0.5 L=8				*		1	
43		SM8040802TP		SCREW M4X8				*		2	
44		SV4030601SR		SCREW M3 L=6				*		2	
45		HX00292000A		CONNECTING PART				*		1	

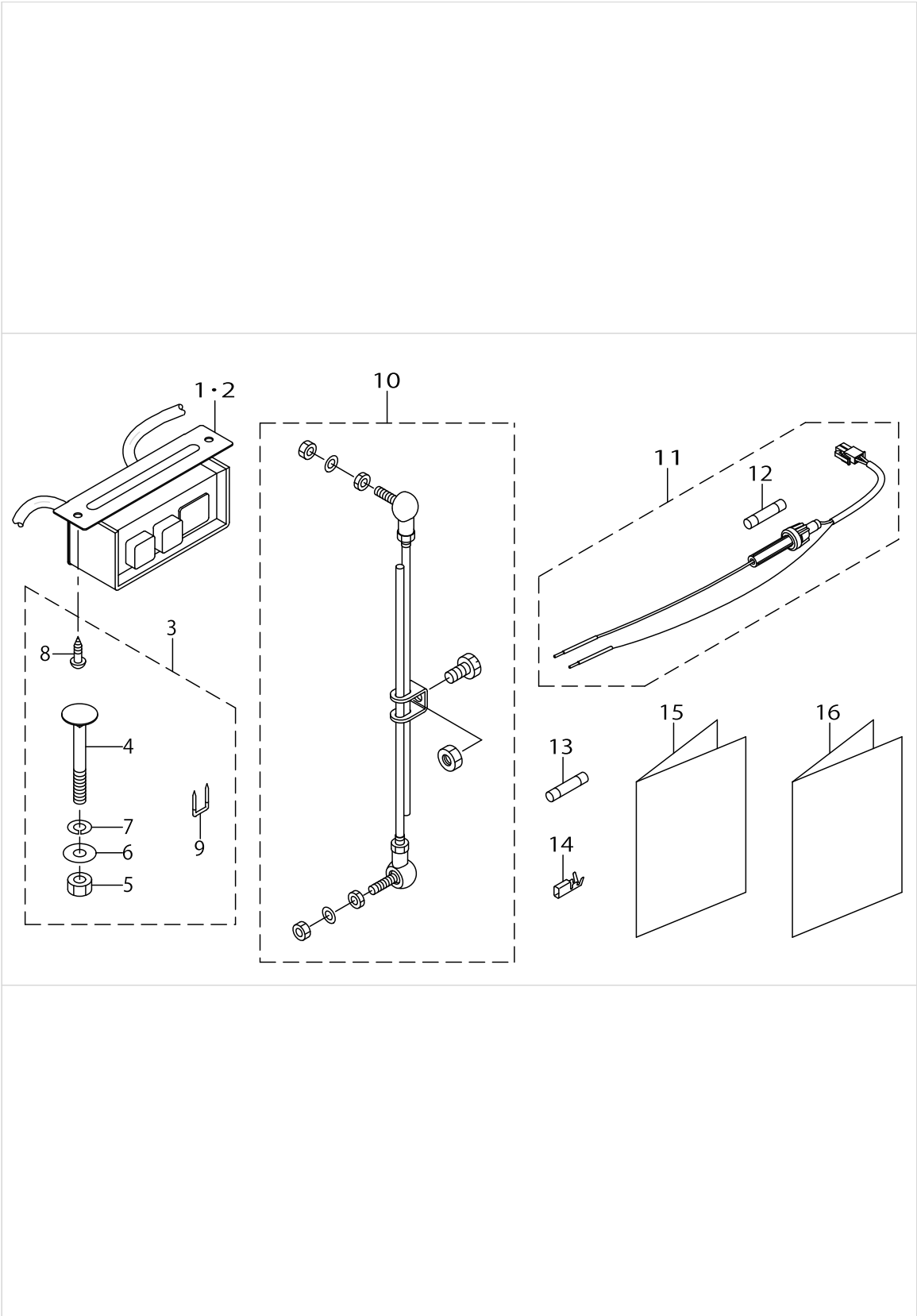
PSC UNIT COMPONENTS



PSC UNIT COMPONENTS

No.	Supply Code	Parts No.	Replacement	Parts name	Remarks	Choice	Step	Level	Cons	Qty	Rep. QTY
46		SL4041081SF		SCREW M4 L=10				*		6	
47		SL4041081SF		SCREW M4 L=10				*		5	
48		SL4041681SF		SCREW M4 L=16				*		3	
49		SL4041481SC		SCREW M4X0.7 L=14				*		2	
50		SL4041081SF		SCREW M4 L=10				*		4	
51		SL4041081SF		SCREW M4 L=10				*		1	
52		SL4041091SE		SCREW M4 L=10				*		3	
53		SM9081620SE		SCREW M8 L=16				*		4	
54		WP0841601SE		WASHER				*		4	
55		SL4041081SC		SCREW M4 L=10				*		2	
56		SL4041281SC		SCREW M4X0.7 L=12				*		2	
57		HX00222000B		CABLE CLAMP				*		1	
58		HX005110000		WIRE SADDLE				*		1	
59		HX005100000		OMEGALOCK				*		2	
60		HX00228000B		SPACER				*		1	
61	D	M8606471AA0		OPC CIRCUIT BOARD A ASM.				*		1	
62		SL4041081SF		SCREW M4 L=10				*		2	

ACCESSORIE PART COMPONENTS



ACCESSORIE PART COMPONENTS

No.	Supply Code	Parts No.	Replacement	Parts name	Remarks	Choice	Step	Level	Cons	Qty	Rep. QTY
1	D	M6101471AA0		POWER SWITCH A ASM.	FOR PFL 2-00~240V 3φ					1	
2		M6101471CA0		POWER SWITCH C ASM.	FOR PFL 2-00~240V 1φ					1	
3	R	M4401471AA0	SK3512001SE	BOX ACCESSORIE PART A ASM.		A				1	2.00
3	R	M4401471AA0	WS0820002KR	BOX ACCESSORIE PART A ASM.		A				1	3.00
3	R	M4401471AA0	NM6080002SC	BOX ACCESSORIE PART A ASM.		A				1	3.00
3	R	M4401471AA0	MAO11532000	BOX ACCESSORIE PART A ASM.		A				1	5.00
3	R	M4401471AA0	MTSHJ100003	BOX ACCESSORIE PART A ASM.		A				1	3.00
3	R	M4401471AA0	WP0851846SC	BOX ACCESSORIE PART A ASM.		A				1	3.00
4		MTSHJ100003		BOLT				*		3	
5		NM6080002SC		NUT M8				*		3	
6		WP0851846SC		WASHER 8.5X22.0X1.8				*		3	
7		WS0820002KR		SPRING WASHER, M8				*		3	
8		SK3512001SE		WOOD SCREW D=5.1 L=20				*		2	
9	D	MA011532000		STAPLE				*		5	
10		M4501471AA0		CONNECTING ROD A ASM.						1	
11	D	M8525351AA0		LAMP FUSE HOLDER ASM., A						1	
12		M9644110000		FUSE 8A				*		1	
13		HF0079040P0		FUSE 4A						1	
14	R	HK032040000	HK016540000	PIN TERMINAL						8	1.00
15		29326303		INSTRUCTION MANUAL (3 LANG.)						1	
16		29334406		INSTRUCTION MANUAL (7 LANG.)						1	

HOW TO MAKE USE OF THIS PARTS LIST

1.As to "#01" and "#02" refer to the "Note" given at the bottom of the respective pages.

2.Codes on the "Qty" column

- Each numeral indicates the number of parts required.
- "0.1" and "2.5" indicate the length (in meters) of the respective parts.

3.Parentheses mean that the corresponding part is a subpart that constructs an assembly part.

4.Dotted lines on the Figures indicate assembly parts.

1. リストページの# 0 1、# 0 2の印は、ページ下の"注記"の説明を参照下さい。
2. 数量欄の数字は、個数を表し、0. 1、2. 5等の数値は、長さ（単位メートル）を表します。
3. 数量欄の（ ）は、組部品を構成している子部品であることを意味します。
4. イラストページの-----枠は、組構成であることを意味します。

NUMERICAL INDEX OF PARTS

PART NO	PAGE	REF NO.	PART NO	PAGE	REF NO.
29326303	6	15	M8525351AA0	6	11
29334406	6	16	M8601471DAA	2	3
CM300100001	2	15	M8602471BA0	2	4·20
EA9500B0100	2	32	M8602471CA0	2	4·20
HF0079040P0	6	13	M8603471AA0	2	5
HK032040000	6	14	M8606471AA0	4	61
HX00147000E	2	21	M8801471000	2	23
HX00222000B	4	57	M9644110000	6	12
HX00228000B	4	60	MA011532000	6	9
HX00292000A	2	45	MTSHJ100003	6	4
HX005100000	4	59	NM6080002SC	6	5
HX005110000	4	58	SK3512001SE	6	8
M2010110000	2	26	SL4041081SC	4	55
M2202472BA0	2	1·2	SL4041081SF	4	62
M2202472CA0	2	1·2	SL4041091SE	4	52
M3001471000	2	8	SL4041281SC	4	56
M3201472CA0	2	19	SL4041481SC	4	49
M3202471000	2	22	SL4041681SF	4	48
M3401471A00	2	13	SL4041891SC	2	17
M3401471AAB	2	12	SM4030801SF	2	42
M3801471000	2	9	SM8040802TP	2	43
M3802471000	2	10	SM9081620SE	4	53
M3803471000	2	11	SV4030601SR	2	44
M4001461000	2	27	WP0841601SE	4	54
M4001461BA0	2	24	WP0851846SC	6	6
M4002461000	2	28	WS0820002KR	6	7
M4004461000	2	29			
M4005461000	2	30			
M4006461000	2	33			
M4006461AA0	2	31			
M4007351000	2	35			
M4008351000A	2	36			
M4009351000A	2	38			
M4010351000	2	37			
M4011351000	2	39			
M4012351000	2	41			
M4401471AA0	6	3			
M4501471AA0	6	10			
M6101471AA0	6	1·2			
M6101471CA0	6	1·2			
M7002471B00	2	14			
M8002430000	2	18			
M8501471BA0	2	6			
M8502461AA0	2	7			
M8508461AA0	2	34			