

MODEL : DNU-1541/DNU-1541H/DNU-1541S

List No : 1401-05

# PARTS LIST

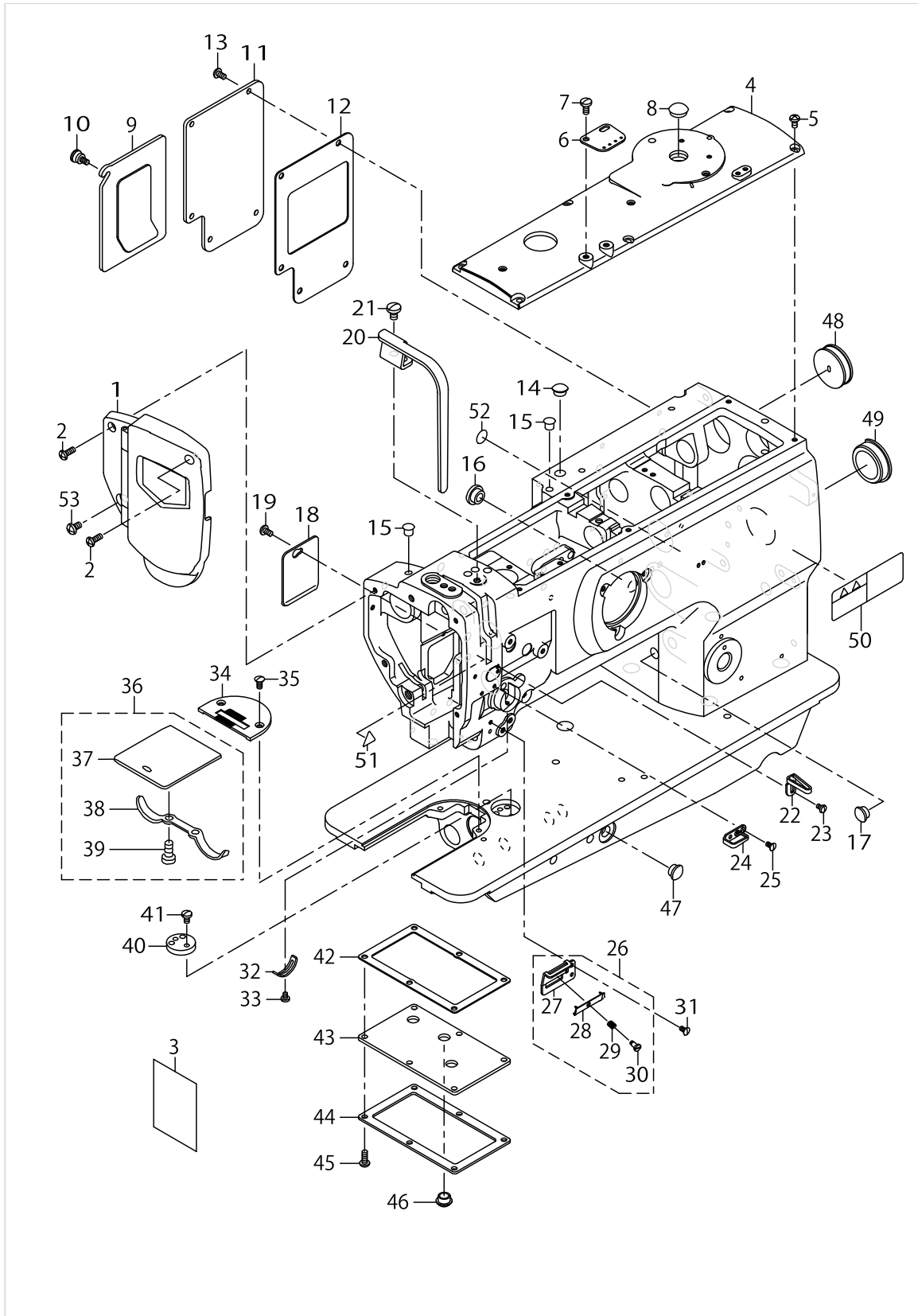
Published:05/12/2017

## CONTENTS

---

FRAME & MISCELLANEOUS COVER COMPONENTS .....	1
UPPER SHAFT DRIVING & BALANCE COMPONENTS .....	5
NEEDLE BAR ROCKING COMPONENTS .....	7
PRESSURE ADJUSTING & UPPER FEED MECHANISM COMPONENTS.....	9
FEED MECHANISM COMPONENTS.....	13
HOOK SHAFT & LOWER SHAFT COMPONENTS .....	17
OPENER COMPONENTS (FOR DNU-1541S).....	21
THREAD TENSION COMPONENTS .....	23
KNEE LIFTING COMPONENTS .....	25
LOWER THREAD WINDER MECHANISM COMPONENTS .....	27
LUBRICATION COMPONENTS .....	29
BELT COVER & OIL RESERVOIR COMPONENTS.....	31
THREAD STAND COMPONENTS.....	33
HOW TO MAKE USE OF THIS PARTS LIST .....	35

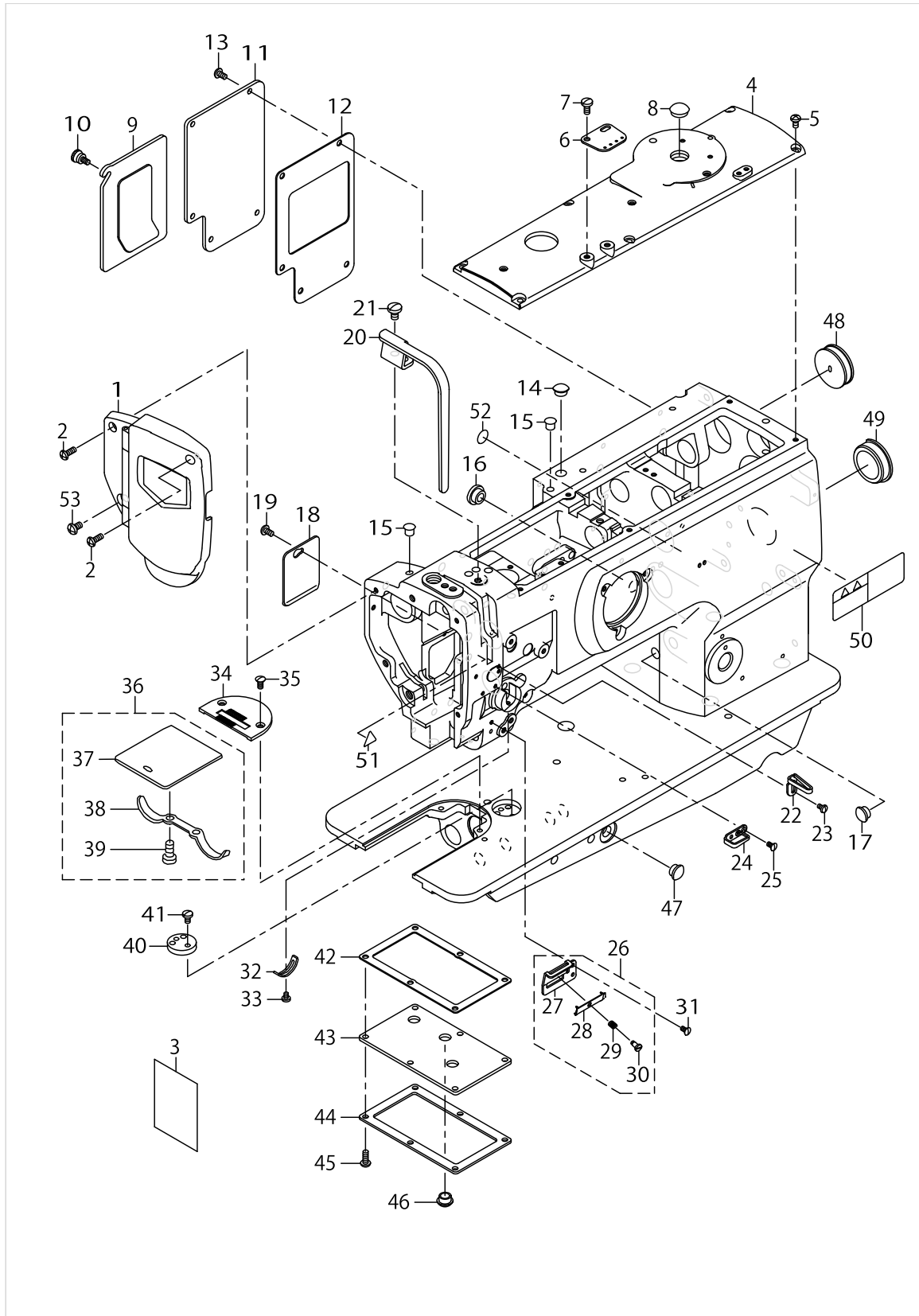
FRAME & MISCELLANEOUS COVER COMPONENTS



FRAME & MISCELLANEOUS COVER COMPONENTS

No.	Supply Code	Parts No.	Replacement	Parts name	Remarks	Choice	Step	Level	Cons	Qty	Rep. QTY
1		40016798		FACE PLATE ASM.						1	
2		SS4111215SP		SCREW11/64-40L=12						2	
3		40019114		LUBRICATION SUPPLEMENT						1	
4		21331301		TOP COVER B						1	
5		SS4110815SP		SCREW 11/64-40 L=8						6	
6		21355904		ARM THREAD GUIDE						1	
7		SS7621040SP		SCREW 3/16-32L=9.5						2	
8		TA1450404R0		RUBBER PLUG D=14.5 L=4						1	
9		21331756		WINDOW PLATE A ASM.						1	
10		21331202		SETSCREW						1	
11		21331806		WINDOW PLATE B						1	
12		21332002		WINDOW PLATE PACKING B						1	
13		SS4110815SP		SCREW 11/64-40 L=8						5	
14		TA1250504R0		RUBBER PLUG						1	
15		TA0750704R0		RUBBER PLUG						2	
16		TA1250504R0		RUBBER PLUG						1	
17		TA1050504R0		RUBBER PLUG						1	
18		21332309		SIDE COVER						1	
19		SS4110815SP		SCREW 11/64-40 L=8						1	
20		21331608		BALANCE COVER						1	
21		SS7150910TP		SCREW 15/64-28 L=9						1	
22		40108674		THREAD GUIDE	FOR DNU-- 1541-DNU-1541S					1	
23		SS5090610SP		SCREW 9/64-40 L=6	FOR DNU-- 1541-DNU-1541S					1	
24		40108675		FRAME THREAD GUIDE						1	
25		SS2090710TP		SCREW 9/64-40 L=7.2						2	
26		21408554		THREAD GUIDE ASM.						1	
27	R	21408505	21408554	THREAD GUIDE PLATE				*		1	1.00
28		17912106		NEEDLE THREAD PRESSER PLATE				*		1	
29		B1132521000		THREAD PRESSER PLATE SPRING				*		1	
30		SD0380551SL		HINGE SCREW D= 3.80 H= 5.5				*		1	
31		SS2090710TP		SCREW 9/64-40 L=7.2						1	
32		B3138512000		TAKE-UP SPRING A-DJUSTING PLATE						1	
33		SS7090520TP		SCREW 9/64-40 L=4.5						1	
34		21410006		THROAT PLATE						1	
35		SS2110920TP		SCREW 11/64-40 L=8.5						2	
36		B1112241HA0		BED SLIDE ASM.						1	
37	R	B1112241H00	B1112241HA0	BED SLIDE				*		1	1.00
38		A1111007000		SLIDE PLATE SPRING				*		1	
39		SS6060210SP		SCREW 3/32-56L=1.9				*		2	
40		B1103141H00		SCALE BASE PLATE						1	
41		SS7110720SP		SCREW 11/64-40 L=7						2	
42		21401302		GASKET						1	
43		21401401		OIL TANK COVER						1	
44		21401500		OIL TANK COVER PLATE						1	
45		SS4111015SP		SCREW11/64-40L=10						6	

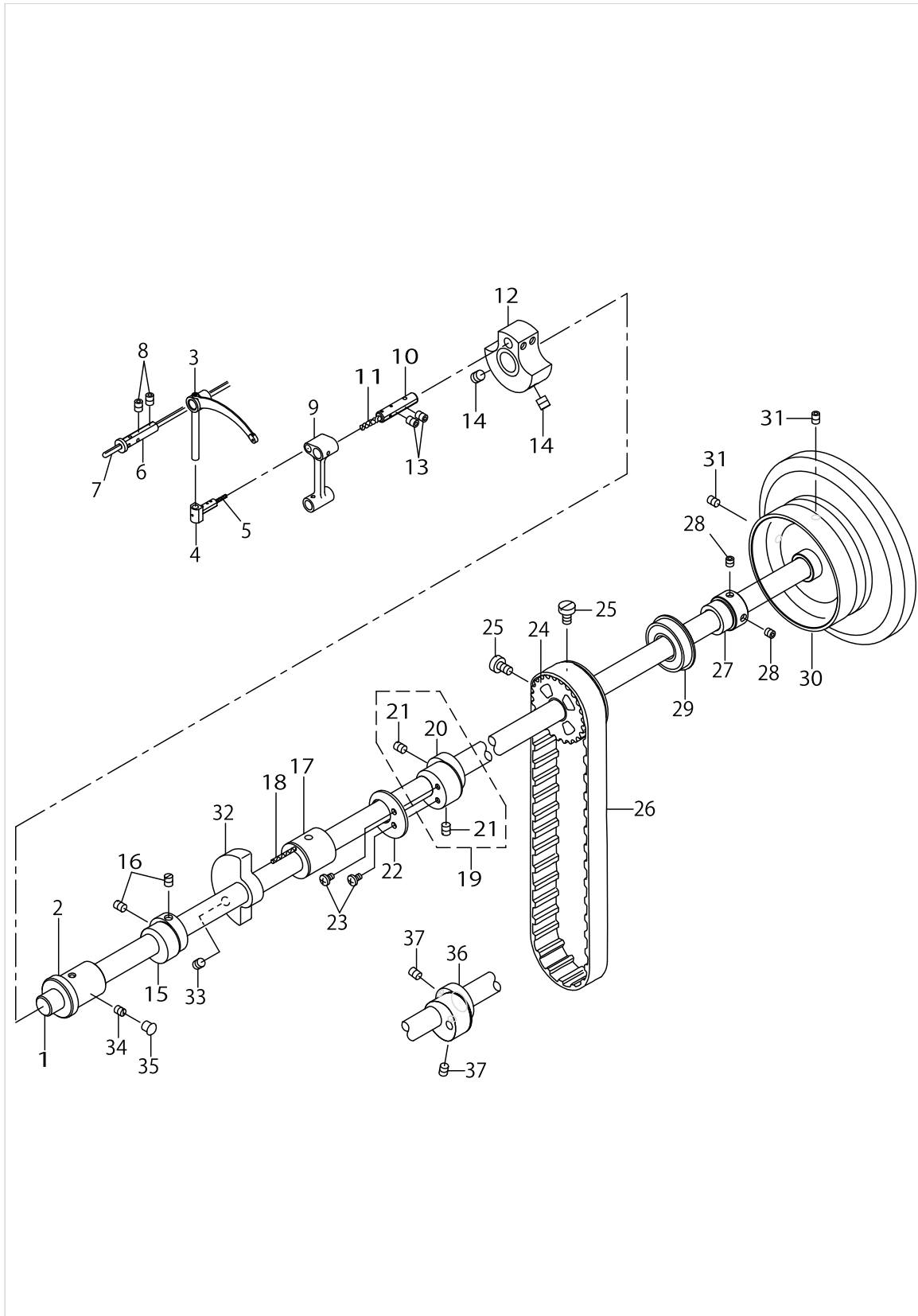
FRAME & MISCELLANEOUS COVER COMPONENTS



FRAME & MISCELLANEOUS COVER COMPONENTS

No.	Supply Code	Parts No.	Replacement	Parts name	Remarks	Choice	Step	Level	Cons	Qty	Rep. QTY
46		TA1050504R0		RUBBER PLUG						3	
47		TA1050504R0		RUBBER PLUG						1	
48		10201200		RUBBER PLUG						1	
49		22619100		CAP						1	
50		CM301300001		SAFETY LABEL						1	
51		CM300200001		ATTENTION SEAL	EXCEPT U- SEIN JAPAN					1	
52		22901805		GROUND MARK						1	
53		SS4150915SP		SCREW 15/64-28 L=9						1	

# UPPER SHAFT DRIVING & BALANCE COMPONENTS

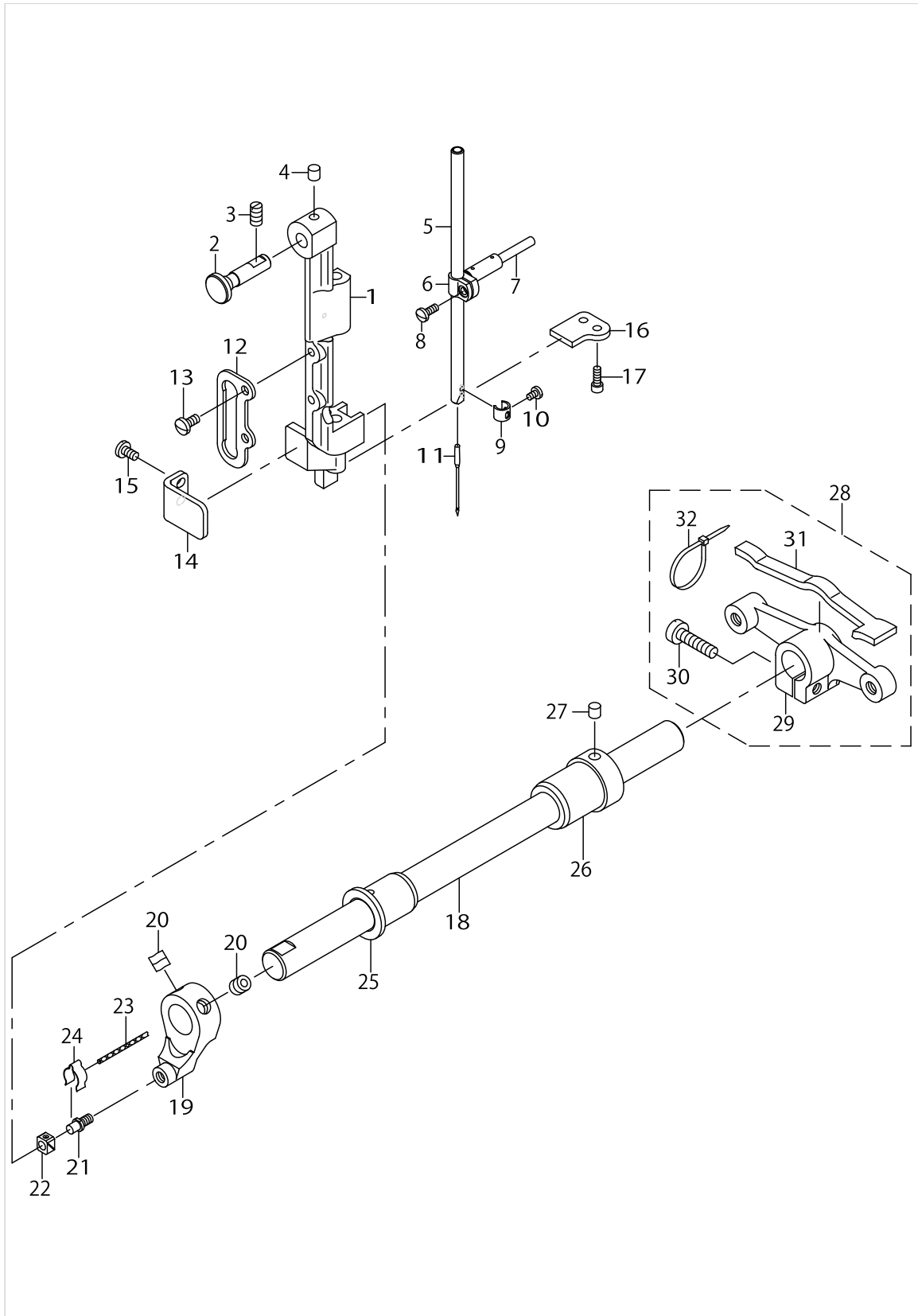


UPPER SHAFT DRIVING & BALANCE COMPONENTS

No.	Supply Code	Parts No.	Replacement	Parts name	Remarks	Choice	Step	Level	Cons	Qty	Rep. QTY
1		21332705		UPPER SHAFT						1	
2		21333000		UPPER SHAFT FRONT METAL						1	
3		21401906		THREAD TAKE-UP LEVER						1	
4		22605406		TAKE-UP LEVER THRUST PIN						1	
5		CQ202000000		OIL WICK						.03	
6		B1906051000		TAKE-UP LEVER PIN						1	
7		CQ303000000		OIL WICK						.45	
8		SS8150822TP		SCREW 15/64-28 L=8						2	
9		21339106		NEEDLE BAR CRANK ROD						1	
10		B1210051000		NEEDLE BAR CRANK PIN						1	
11		CQ505000000		OIL WICK						.03	
12		21332507		COUNTER WEIGHT (A) (36MM)						1	
13		SS8150822TP		SCREW 15/64-28 L=8						2	
14		SM8080812TP		SCREW M8X8						2	
15	R	21339502	21339551	UPPERFEEDCAM(3.5)						1	1.00
16		SS8660810TP		SCREW 1/4-40 L=8						2	
17		21333109		UPPER SHAFT INNER METAL						1	
18		CQ202000000		OIL WICK						.15	
19		21336557		ECCENTRIC CAM A ASM.	FOR DNU-- 1541,DNU-1541S					1	
20	R	21336508	21336557	ECCENTRIC CAM A				*		1	1.00
21		SS8660810TP		SCREW 1/4-40 L=8				*		2	
22		21353008		HORIZONTAL FEED CAM COVER	FOR DNU-- 1541,DNU-1541S					1	
23		SS7110710SP		SCREW 11/64-40 L=7	FOR DNU-- 1541,DNU-1541S					2	
24		22604904		UPPER SPROCKET						1	
25		SS6661110SP		SCREW 1/4-40 L=11						2	
26		22604300		TIMING BELT						1	
27		21402300		UPPER SHAFT BEARING HOOK						1	
28		SM8060602TP		SCREW M6X6						2	
29		B1203512000		BUSHING, REAR						1	
30		21334008		FLYWHEEL						1	
31		SS8150822TP		SCREW 15/64-28 L=8						2	
32		21333406		BALANCER						1	
33		SS8151550SP		SCREW15/64-28L=15						2	
34		SS8150710TP		SCREW 15/64-28 L=7						1	
35		TA0750704R0		RUBBER PLUG						1	
36		40019905		TRIANGUAR CAM A	FOR DNU-1541H					1	
37		SS8660810TP		SCREW 1/4-40 L=8	FOR DNU-1541H					2	



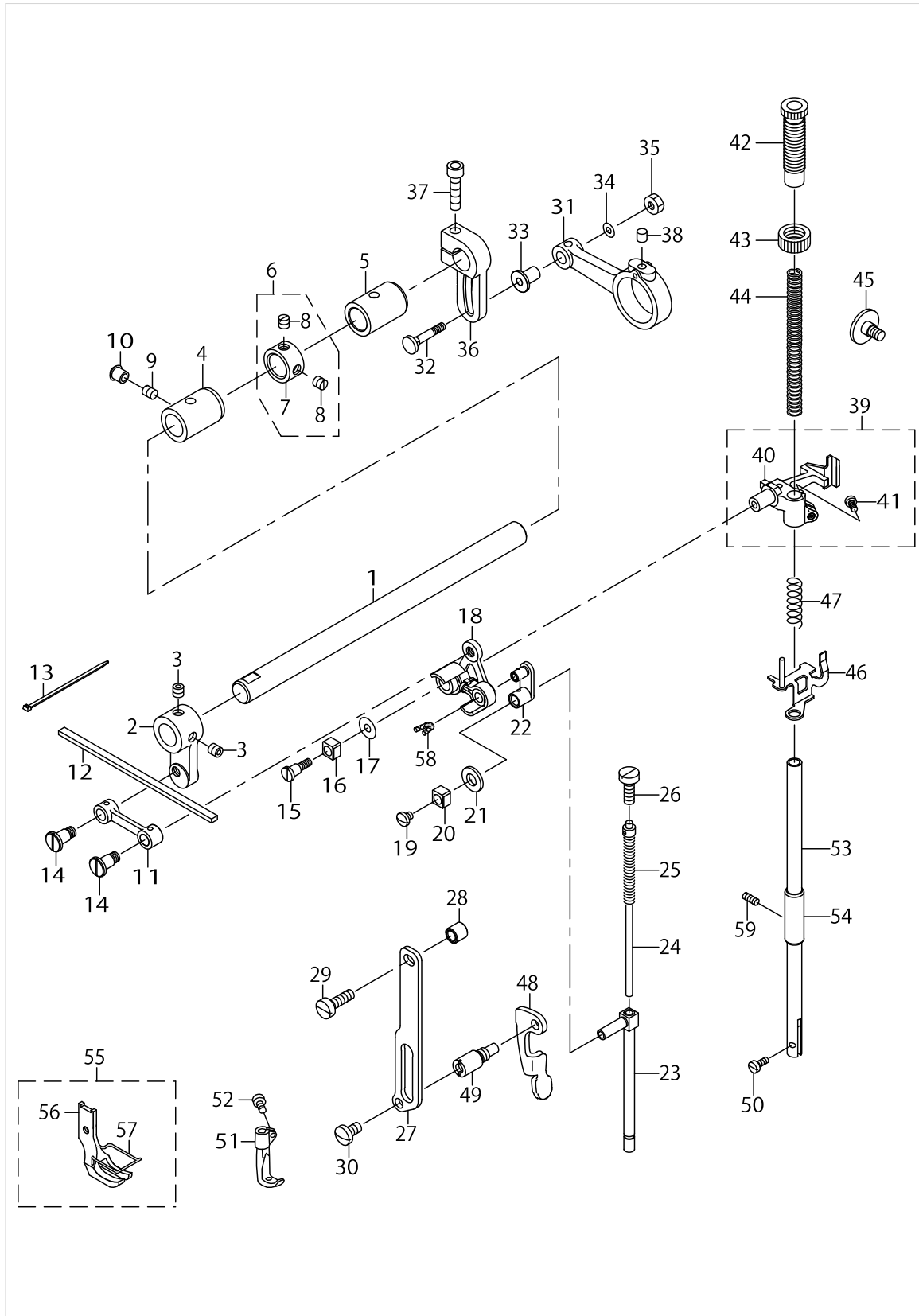
# NEEDLE BAR ROCKING COMPONENTS



NEEDLE BAR ROCKING COMPONENTS

No.	Supply Code	Parts No.	Replacement	Parts name	Remarks	Choice	Step	Level	Cons	Qty	Rep. QTY
1		B1420563000		NEEDLE BAR FRAME						1	
2		21405204		HINGE STUD						1	
3		SS8151150TP		SCREW 15/64-28 L=10.5						1	
4		22814909		FELT						1	
5		B1401053000		NEEDLE BAR						1	
6	D	B1411053000		NEEDLE BAR CONNECTION						1	
7		B1412051000		FELT						1	
8	R	SS7090910SP	SS7090910TP	SCREW 9/64-40 L=8.5						1	1.00
9		10308609		THREAD GUARD						1	
10		SS7080510TP		SCREW 1/8-44 L=4.5						1	
11		M1351731600		NEEDLE 135X17 #160						1	
12		B1467563000		UPPER FEED BAR GUIDE						1	
13		SS7110910TP		SCREW 11/64-40 L= 8.5						2	
14		21388400		ROCKING BASE GUIDE						1	
15		SS7110830SP		SCREW 11/64-40 L= 7.5						2	
16		21338603		ROCKING BASE GUIDE (B)						1	
17		SS6091022TP		SCREW						2	
18		21338900		ROCKING SHAFT						1	
19		21338801		ROCKINGFRONTARM						1	
20		SM8080802TP		SCREW						2	
21		B1410771000		STUD						1	
22		B1414232000		SQUARE BLOCK						1	
23		CQ202000000		OIL WICK						.05	
24		B1437051000		OIL WICK RETAINER						1	
25		21339304		ROCKING SHAFT FRONT METAL						1	
26		40027746		BUSHING REAR						1	
27		22814909		FELT						1	
28		21339056		ROCKING REAR ARM ASM.						1	
29		21339007		ROCKING REAR ARM				*		1	
30		SS6152440SP		SCREW 15/64-28 L=23.5				*		1	
31		21347406		ROCKING REAR ARM FELT				*		1	
32		EA9500B0100		CABLE BAND				*		2	

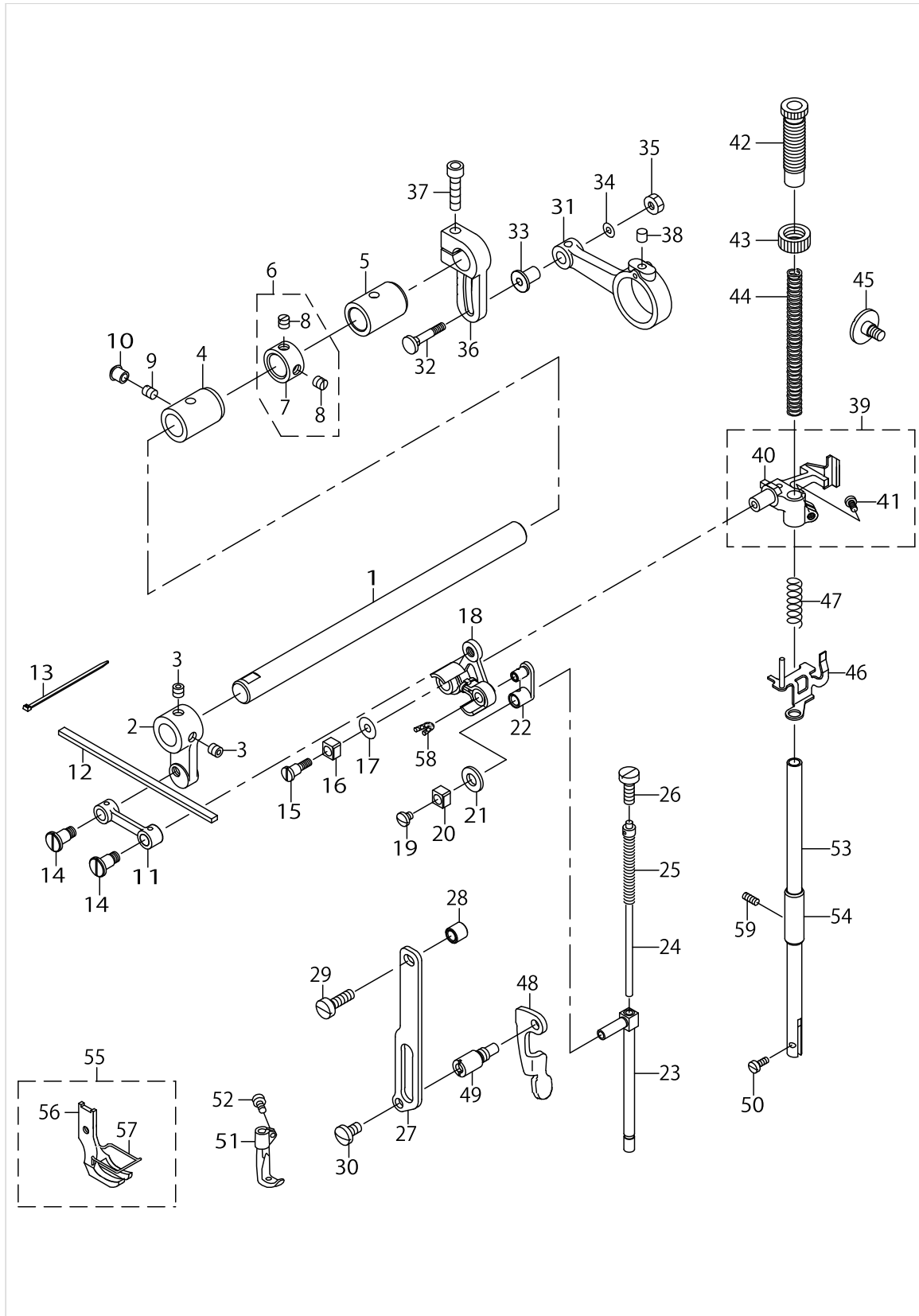
PRESSURE ADJUSTING & UPPER FEED MECHANISM COMPONENTS



PRESSURE ADJUSTING & UPPER FEED MECHANISM COMPONENTS

No.	Supply Code	Parts No.	Replacement	Parts name	Remarks	Choice	Step	Level	Cons	Qty	Rep. QTY
1		21340401		UPPER FEED SHAFT						1	
2		21340500		UPPER FEED FRONT ARM						1	
3		SS8660612TP		SCREW 1/4-40 L=6						2	
4		21341904		FRONT METAL						1	
5		21378302		FEED SHAFT METAL						1	
6		22904155		MAIN SHAFT THRU-ST COLLAR ASM.						1	
7	R	22904106	22904155	MAIN SHAFT THRUST COLLAR				*		1	1.00
8		SS8660610TP		SCREW 1/4-40 L=6				*		2	
9		SS8150710TP		SCREW 15/64-28 L=7						1	
10		TA0750704R0		RUBBER PLUG						1	
11		40033026		UPPER FEED LINK						1	
12		21347109		FELT						1	
13		EA9500B0000		CLIP CV-70S						2	
14		40018340		SCREW						2	
15		40018339		SCREW						1	
16		B1414555000		SLIDE BLOCK						1	
17		WP0501046SC		WASHER 5 X 14 X 1						1	
18		40033029		TRIANGULAR LEVER ASM.						1	
19		SS7110510SP		SCREW 11/64-40 L=5						1	
20		B1414555000		SLIDE BLOCK						1	
21		10509701		FELT						1	
22		40018341		WALKING BAR DRIVING LINK						1	
23		40033030		WALKING BAR A						1	
24		B14670530A0		WALKING BAR ASM.						1	
25		B1468053000		WALKING BAR SPRING						1	
26		SS6151780SP		SCREW 15/64-28 L=17.0						1	
27		21406509		UPPER FEED GUIDE PLATE						1	
28		26225201		ROLLER						1	
29		SS6151920SP		SCREW 15/64-28 L=19.0						1	
30		SS7150740SP		SCREW 15/64-28 L=7						1	
31		21340104		UPPER FEED ROD						1	
32		D1456055B00		HINGE SCREW						1	
33		D1455055B00		CONNECTING STUD						1	
34		WP0482086SD		WASHER 4.8X11.5X2						1	
35		NS6110530SP		NUT 11/64-40						1	
36		21437900		UPPER FEED REAR ARM						1	
37		SM6062502TP		SCREW M6 L=25						1	
38		22814909		FELT						1	
39		40033032		PRESSER BAR HOLDER A ASM.						1	
40		40033031		PRESSER BAR HOLDER A				*		1	
41		SS7110910TP		SCREW 11/64-40 L= 8.5				*		1	
42		21340906		PRESSER ADJUSTING SCREW						1	
43	R	22907604	22907554	PRESSER SPRING REGULATORY NUT						1	1.00
44		B1502246000		PRESSER SPRING						1	
45		SD0800481SP		HINGE SCREW D= 8 H= 4.9						1	

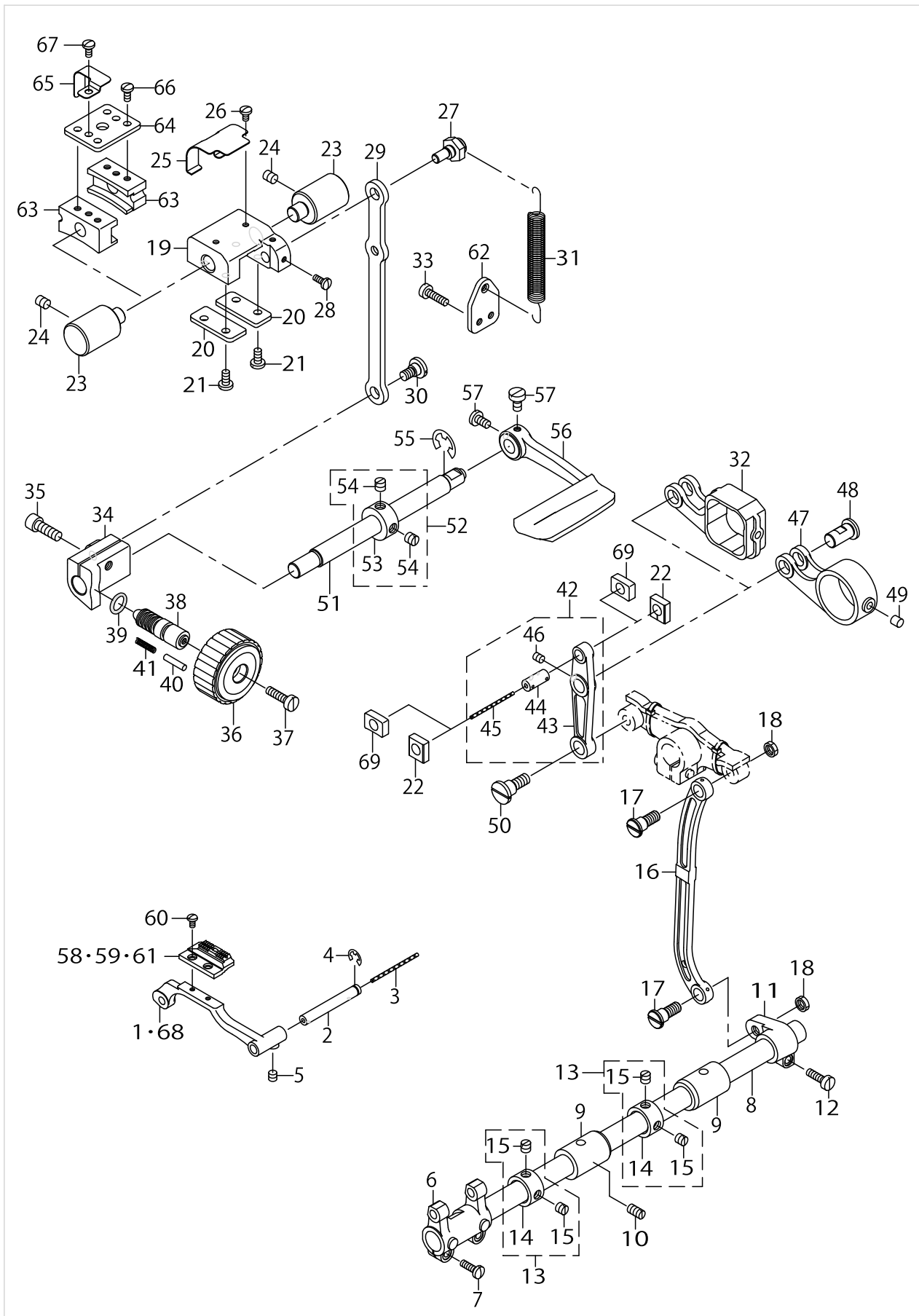
PRESSURE ADJUSTING & UPPER FEED MECHANISM COMPONENTS



PRESSURE ADJUSTING & UPPER FEED MECHANISM COMPONENTS

No.	Supply Code	Parts No.	Replacement	Parts name	Remarks	Choice	Step	Level	Cons	Qty	Rep. QTY
46		21341151		THREAD RELEASE HOLDING PLATE						1	
47		B1462053000		THREAD RELEASE SPRING						1	
48		21406103		PRESSER LIFTER LEVER						1	
49		21406608		GUIDE PLATE SPACER						1	
50		SS6090910TP		SCREW 9/64-40 L=9						1	
51	R	B1470241H00	B1470241HA0	WALKING FOOT						1	1.00
52		B1471241H00		SCREW						1	
53		B1501241H00		PRESSER BAR						1	
54		B1510155000		PRESSER BAR LOWER BUSHING						1	
55		B1525241HA0		PRESSER FOOT ASM.						1	
56	R	B1525241H00	B1525241HA0	PRESSER FOOT				*		1	1.00
57		10337905		FINGER GUARD				*		1	
58		CQ252000000		OIL WICK						.02	
59		SS8111010TP		SCREW 11/64-40 L=9.5						1	

FEED MECHANISM COMPONENTS

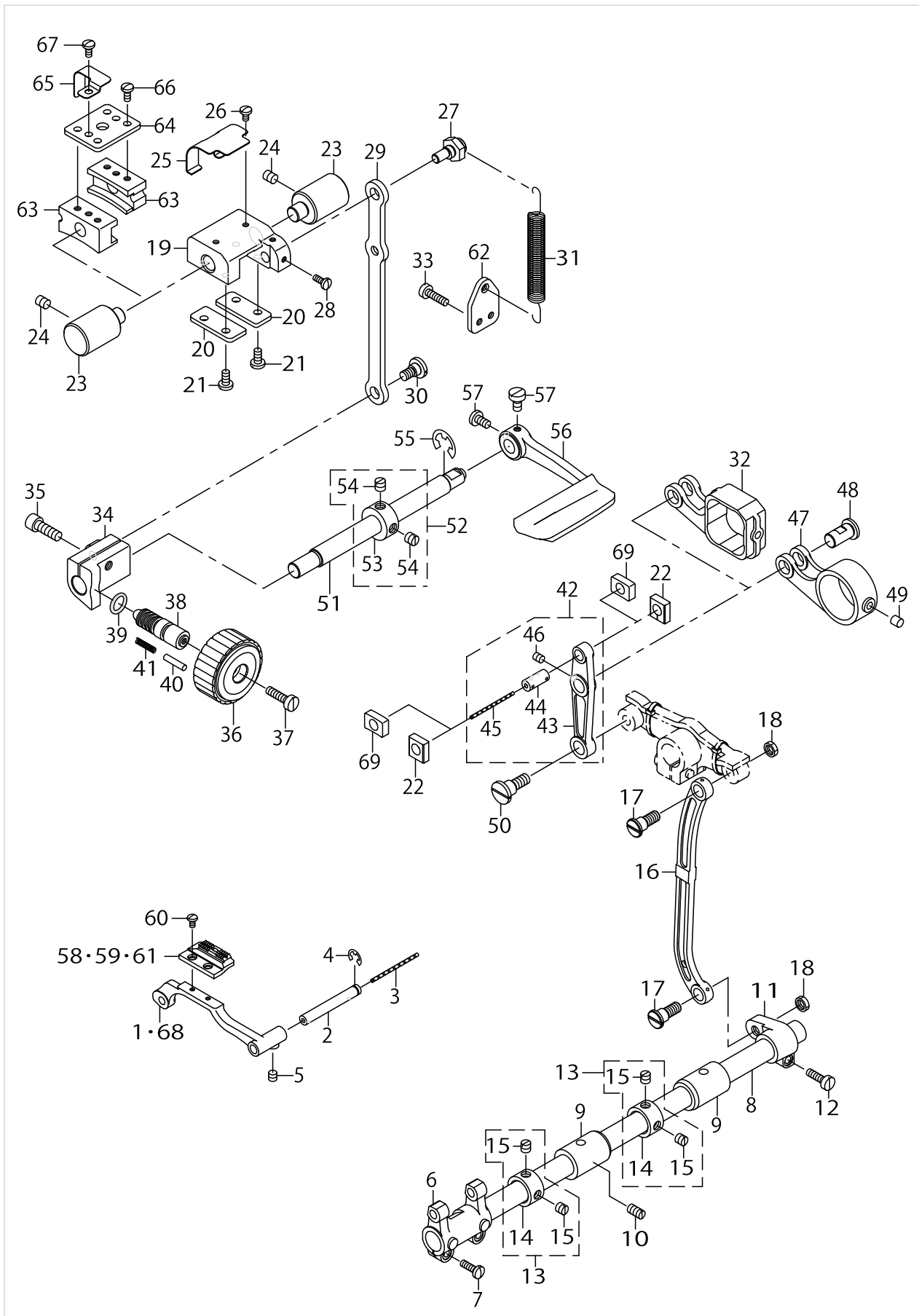


FEED MECHANISM COMPONENTS

No.	Supply Code	Parts No.	Replacement	Parts name	Remarks	Choice	Step	Level	Cons	Qty	Rep. QTY
1		21405006		FEED BASE	FOR DNU-- 1541,DNU-1541S					1	
2		B1604012000A		FEED BAR SHAFT						1	
3		CQ202000000		OIL WICK						.14	
4		RE0500711KP		SNAP RING 5						1	
5		SM8050512TP		SCREW						1	
6	R	B1603512000	21364104	FEED ROCKER						1	1.00
7		SS7111410TP		SCREW11/64-40L=14						2	
8		22609408		FEED ROCK SHAFT						1	
9		21378302		FEED SHAFT METAL						2	
10		SS8151150TP		SCREW 15/64-28 L=10.5						1	
11		22609309		FEED ROCKER SHAFT CRANK						1	
12		SS6121610TP		SCREW 3/16-28 L=15.5						1	
13		22904155		MAIN SHAFT THRU- ST COLLAR ASM.						2	
14	R	22904106	22904155	MAIN SHAFT THRUST COLLAR				*		1	1.00
15		SS8660610TP		SCREW 1/4-40 L=6				*		2	
16		10205201		NEEDLE BAR FRAME ROD						1	
17		SD0900701TP		HINGE SCREW D= 9 H= 7						2	
18		NS6680320SP		NUT 9/32-28						2	
19		21337506		FEED ADJUSTING BASE	FOR DNU-- 1541,DNU-1541S					1	
20		21337704		FEED ADJUSTING BASE COVER	FOR DNU-- 1541,DNU-1541S					2	
21		SS7110910TP		SCREW 11/64-40 L= 8.5	FOR DNU-- 1541,DNU-1541S					4	
22		21337407		SQUARE BLOCK	FOR DNU-- 1541,DNU-1541S					2	
23		21337803		FEED ADJUSTING BASE SUPPORT						2	
24		SS8150822TP		SCREW 15/64-28 L=8						2	
25		21338306		FELT SUPPORT	FOR DNU-- 1541,DNU-1541S					1	
26		SS7090610SP		SCREW 9/64-40 L=6	FOR DNU-- 1541,DNU-1541S					2	
27		21337902		ECCENTRIC PIN						1	
28		SS7090910TP		SCREW9/64-40L=8.5						2	
29		21337308		FEED ADJUSTING ROD						1	
30		SD0800402TP		HINGE SCREW D= 8 H= 4						1	
31		21337605		SPRING						1	
32		40011400		FEED ROD (C)	FOR DNU-1541H					1	
33		SS6111610SP		SCREW11/64-40L=16						2	
34		21337209		FEED ADJUSTING A						1	
35		SM6061802TP		SCREW M6 L=18						1	
36		21336805		FEED DIAL A						1	
37		SS6121860SP		SCREW 3/16-28 L=18						1	
38	R	11009909	22911804	FEED REGULATOR SCREW						1	1.00
39		RO092270200		RUBBER RING						1	
40		22912000		FEED REGULATOR PIN						1	
41		22912109		FEED REGULATOR PIN SPRING						1	
42		21336656		FEED LINK ASM.						1	
43		21336607		FEED LINK				*		1	



FEED MECHANISM COMPONENTS

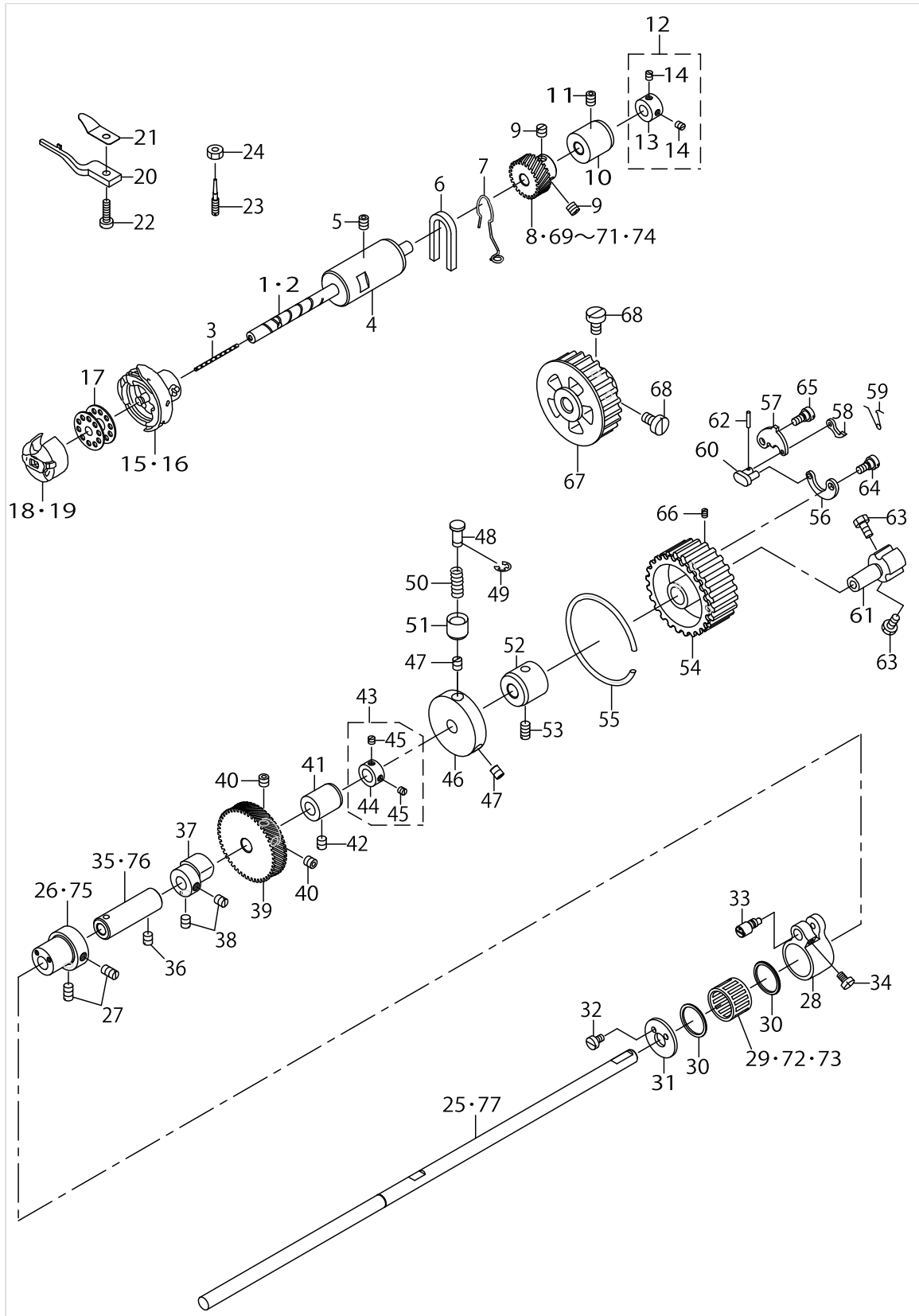


FEED MECHANISM COMPONENTS

No.	Supply Code	Parts No.	Replacement	Parts name	Remarks	Choice	Step	Level	Cons	Qty	Rep. QTY
44	R	B1418761000	40009103	CONNECTING FORKED LINK PIN				*		1	1.00
45		CQ202000000		OIL WICK				*		0.04	
46		SM8050612TP		SCREW M5X6				*		1	
47		21336706		FEED ROD A	FOR DNU-- 1541,DNU-1541S					1	
48	R	21338207	21378906	FEED LINK PIN						1	1.00
49		21387402		FELT						1	
50		SD1000801SH		HINGE SCREW D=10 H=8						1	
51		21336300		BACKWARD FEED LEVER SHAFT						1	
52		CS1201010SH		THRUST COLLAR ASM. D=12 W=10						1	
53		CS1201011SH		THRUST COLLAR D=12 W=10				*		1	
54		SS8660610TP		SCREW 1/4-40 L=6				*		2	
55		RE0900000K0		E-RING 9						1	
56		21388004		REVERSE FEED ROCK SHAFT						1	
57		SS6120930TP		SCREW 3/16-28 L=9						2	
58		40019908		FEED DOG(4X2.5)	FOR DNU-1541					1	
59		40019910		FEED DOG(6X2.5)	FOR DNU-1541S					1	
60		SS4080620TP		SCREW 1/8-44 L=6						2	
61		40019911		FEED DOG(2.6X2.2)	OPTIONAL PARTS					1	
62		40019926		SPRING HOOK						1	
63	R	40038711	40081969	FEED ADJUSTING BASE B	FOR DNU-1541H					2	1.00
64		21407408		FITTING PLATE	FOR DNU-1541H					2	
65		40038712		FELT HOLDER	FOR DNU-1541H					1	
66		SS7110910TP		SCREW 11/64-40 L= 8.5	FOR DNU-1541H					4	
67		SS7110710SP		SCREW 11/64-40 L=7	FOR DNU-1541H					1	
68		40019907		FEED BASE	FOR DNU-1541H					1	
69	R	21407309	40081969	SQUARE BLOCK	FOR DNU-1541H	A				2	1.00
69	R	21407309	40081970	SQUARE BLOCK	FOR DNU-1541H	B				2	1.00

40038711  
送り調節体-  
B/40038711  
FEED ADJ-  
USTING BASE B  
21407200  
送り調節/2-  
1407200 F-  
EED ADJU-  
STING BASE

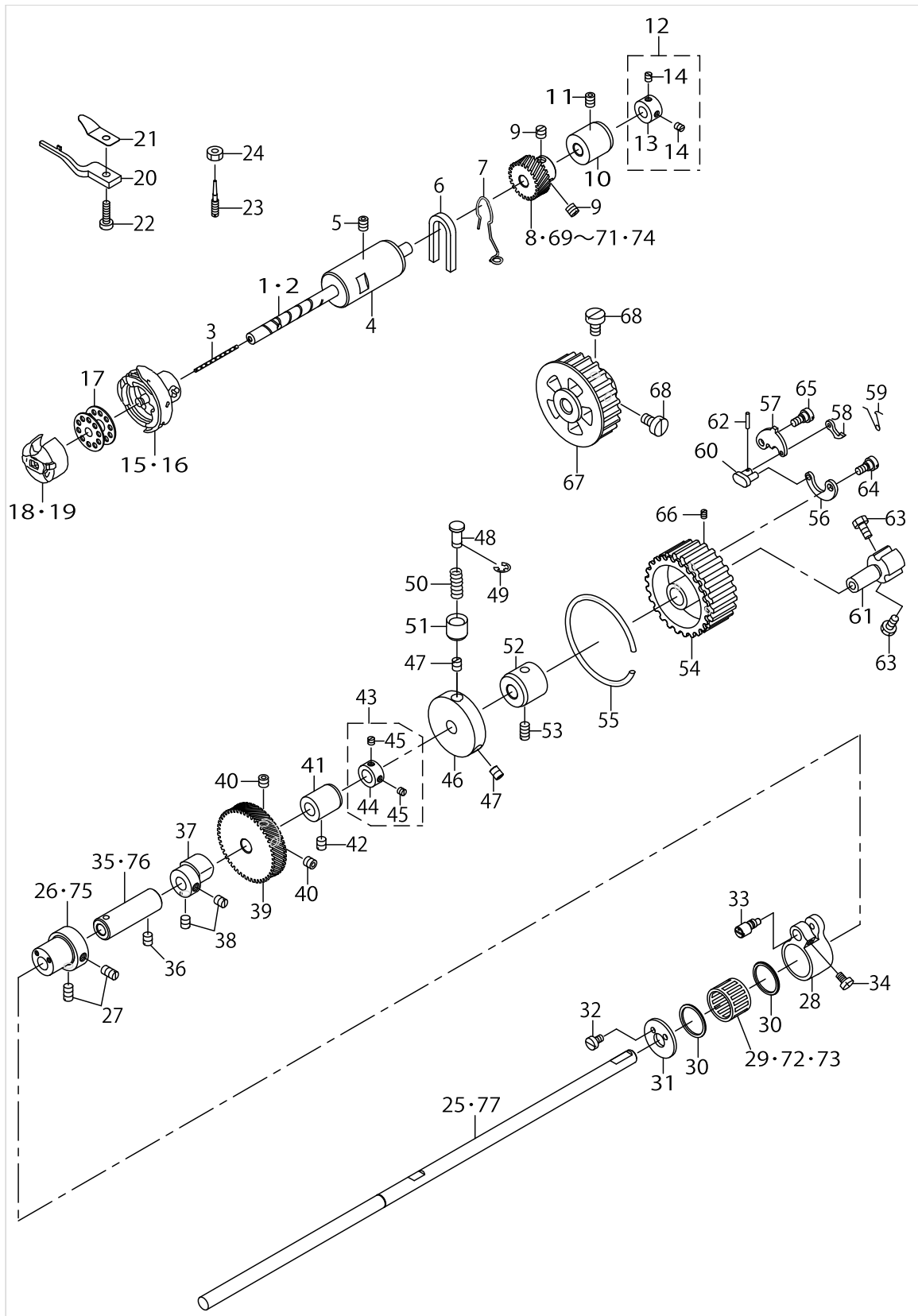
# HOOK SHAFT & LOWER SHAFT COMPONENTS



HOOK SHAFT & LOWER SHAFT COMPONENTS

No.	Supply Code	Parts No.	Replacement	Parts name	Remarks	Choice	Step	Level	Cons	Qty	Rep. QTY
1		21403506		HOOK SHAFT	FOR DNU-- 1541-DNU-1541H					1	
2	D	21403605		HOOK SHAFT	FOR DNU-1541S					1	
3		CQ200000000		OIL WICK						.1	
4		B1802141H00A		DRIVING SHAFT BUSHING, FRONT						1	
5		SS8150822TP		SCREW 15/64-28 L=8						1	
6		B1155141H00		OIL PIEP						1	
7		21407804		FELT SUPPORT						1	
8		21404009		HOOK SHAFT GEAR A						1	
9		SS8660610TP		SCREW 1/4-40 L=6						2	
10		B1803141H00		BUSHING, INTERMEDIATE						1	
11		SS8150822TP		SCREW 15/64-28 L=8						1	
12	R	CS0791010SH	CS079101ASH	THRUST COLLAR A- SM. D=7.94 W=10						1	1.00
13		CS0791016SH		THRUST HOLDER D=7.94 W=10				*		1	
14		SS8110422TP		SCREW 11/64-40 L=4				*		2	
15		B1830241HA0		HOOK ASM.	FOR DNU-- 1541-DNU-1541H					1	
16		B1830241SA0		HOOK ASM.	FOR DNU-1541S					1	
17		B9117201000		BOBBIN						1	
18		B1837241H00		BOBBIN CASE	FOR DNU-- 1541-DNU-1541H					1	
19		B1837241S00		BOBBIN CASE	FOR DNU-1541S					1	
20	R	11038809	22942502	BOBBIN CASE HOLDER						1	1.00
21		B1829241H00		THREAD PRESSER PLATE						1	
22		SS6111620SP		SCREW 11/64-40 L=16.0						1	
23		B1834512000A		OIL ADJUSTING SCREW						1	
24		NS6110530SP		NUT 11/64-40						1	
25		21402409		LOWER SHAFT						1	
26		21405105		FEED DRIVING CAM						1	
27		SS8151150TP		SCREW 15/64-28 L=10.5						2	
28		23618200		FEED DRIVING BASE ARM						1	
29		SB32000060A		BEARING	SELECTIVE PARTS					1	
30		23618101		FEED DRIVING CAM THRUST BUSH						2	
31		21405303		FEED DRIVING CAM PLATE						1	
32		SS6090620TP		SCREW						2	
33		23618408		FEED DRIVING BASE SHAFT						1	
34		SS7110740TP		SCREW 11/64-40 L=7						1	
35		21402508		LOWER SHAFT FRONT METAL						1	
36		SS8150710TP		SCREW 15/64-28 L=7						1	
37		21404405		OPENER CAM	FOR DNU-1541S					1	
38		SS8150710TP		SCREW 15/64-28 L=7	FOR DNU-1541S					2	
39		21402706		LOWER SHAFT GEAR						1	
40		SS8660612TP		SCREW 1/4-40 L=6						2	
41		21402607		LOWER SHAFT INNER METAL						1	
42		SS8150710TP		SCREW 15/64-28 L=7						1	
43		CS0950810SH		THRUST COLLAR ASM. D=9.5 W=8						1	
44	R	CS0950816SH	CS0950810SH	THRUST COLLAR D=9.5 W=8				*		1	1.00

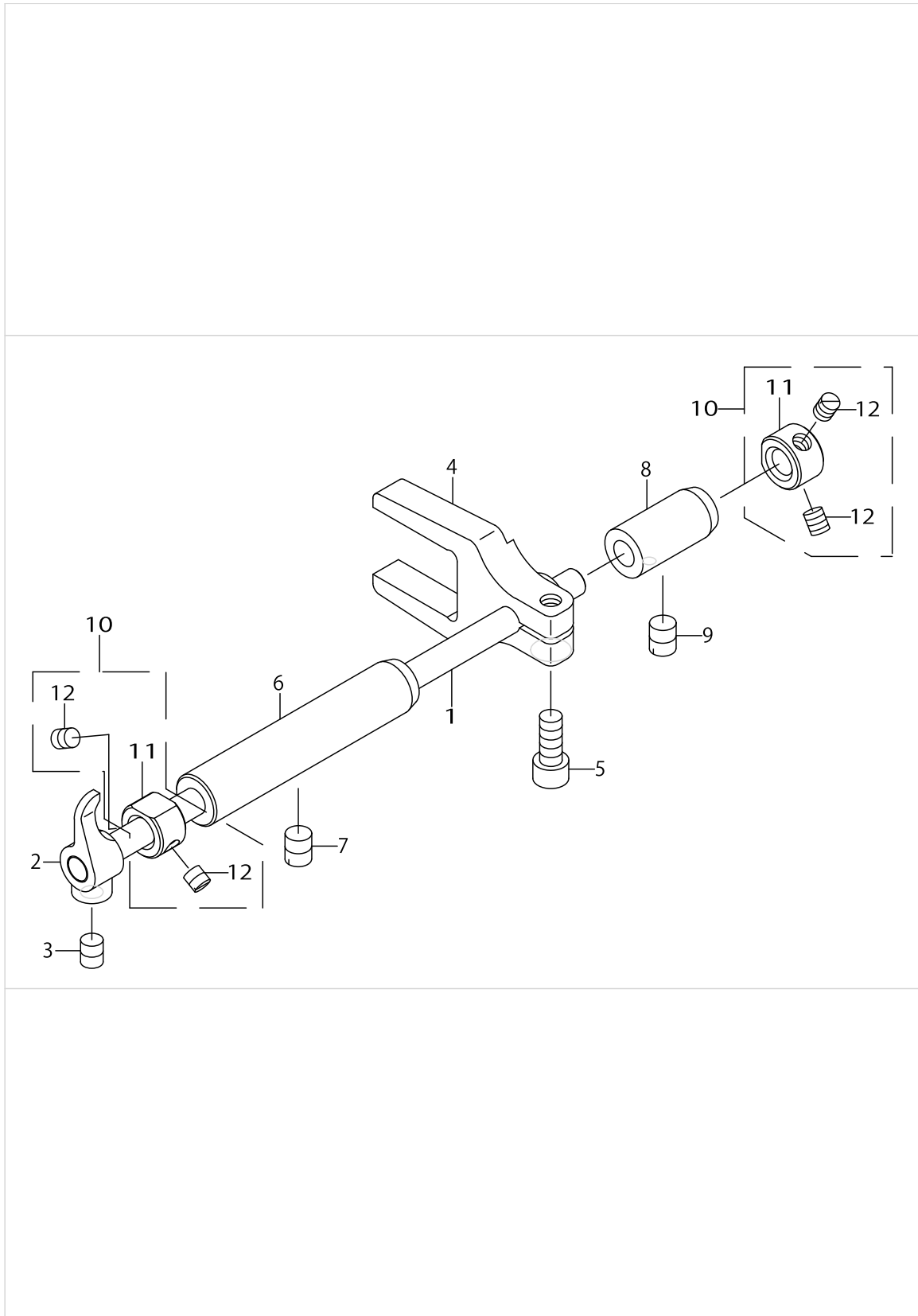
# HOOK SHAFT & LOWER SHAFT COMPONENTS



HOOK SHAFT & LOWER SHAFT COMPONENTS

No.	Supply Code	Parts No.	Replacement	Parts name	Remarks	Choice	Step	Level	Cons	Qty	Rep. QTY
45		SS8110410TP		SCREW 11/64-40 L= 3.5				*		2	
46		21403001		SAFETY CLUTCH DISC	FOR DNU-1541S					1	
47		SS8150710TP		SCREW 15/64-28 L=7	FOR DNU-1541S					2	
48		B1312563000A		SAFETY CLUTCH PUSH BUTTON	FOR DNU-1541S					1	
49		RE0500000K0		E-RING	FOR DNU-1541S					1	
50		B1639051000		SPRING	FOR DNU-1541S					1	
51		B1313055000		SAFETY CLUTCH KNOB SLEEVE	FOR DNU-1541S					1	
52		21402805		LOWER SHAFT BACK METAL						1	
53		SS8150710TP		SCREW 15/64-28 L=7						1	
54		21333505		LOWER SPROCKET	FOR DNU-1541S					1	
55		B1214019000		SPROCKET RING	FOR DNU-1541S					1	
56		B1305055000A		SAFETY CLUTCH SPRING	FOR DNU-1541S					1	
57	R	B1307055000	21387600	SAFETY CLUTCH HOOK	FOR DNU-1541S					1	1.00
58		B1308055000		SAFETY CLUTCH COUNTER-HOOK	FOR DNU-1541S					1	
59	R	B1309055000	40113224	COUNTER-HOOK SPRING	FOR DNU-1541S					1	1.00
60		B1310055000		SAFETY CLUTCH SMALL LINK	FOR DNU-1541S					1	
61		10503605		SAFETY BASE	FOR DNU-1541S					1	
62		B1314055000		SAFETY CLUTCH SMALL LINK PIN	FOR DNU-1541S					1	
63		SS6661110SP		SCREW 1/4-40 L=11	FOR DNU-1541S					2	
64		SD0640322TP		HINGE SCREW D= 6.35 H= 3.2	FOR DNU-1541S					1	
65		SD0640322TP		HINGE SCREW D= 6.35 H= 3.2	FOR DNU-1541S					1	
66		SS8090540SP		SCREW 9/64-40 L=5	FOR DNU-1541S					1	
67		22623201		SPROCKET WHEEL	FOR DNU-- 1541-DNU-1541H					1	
68		SS6661110SP		SCREW 1/4-40 L=11	FOR DNU-- 1541-DNU-1541H					2	
69		21404207		HOOK SHAFT GEAR C	SELECTIVE PARTS					1	
70		21404108		HOOK SHAFT GEAR B	SELECTIVE PARTS					1	
71		21404306		HOOK SHAFT GEAR D	SELECTIVE PARTS					1	
72		SB32000060B		BEARING	SELECTIVE PARTS					1	
73		SB32000060C		BEARING	SELECTIVE PARTS					1	
74		21403902		HOOK SHAFT GEAR Z	SELECTIVE PARTS					1	
75		21405501		FEED DRIVING CAM	FOR DNU-1541H					1	
76		40026828		LOWER SHAFT FRONT METAL ASM.	FOR DNU-1541H					1	
77		40082634		LOWER SHAFT	FOR DNU-- 1541-DNU-1541H					1	

OPENER COMPONENTS (FOR DNU-1541S)

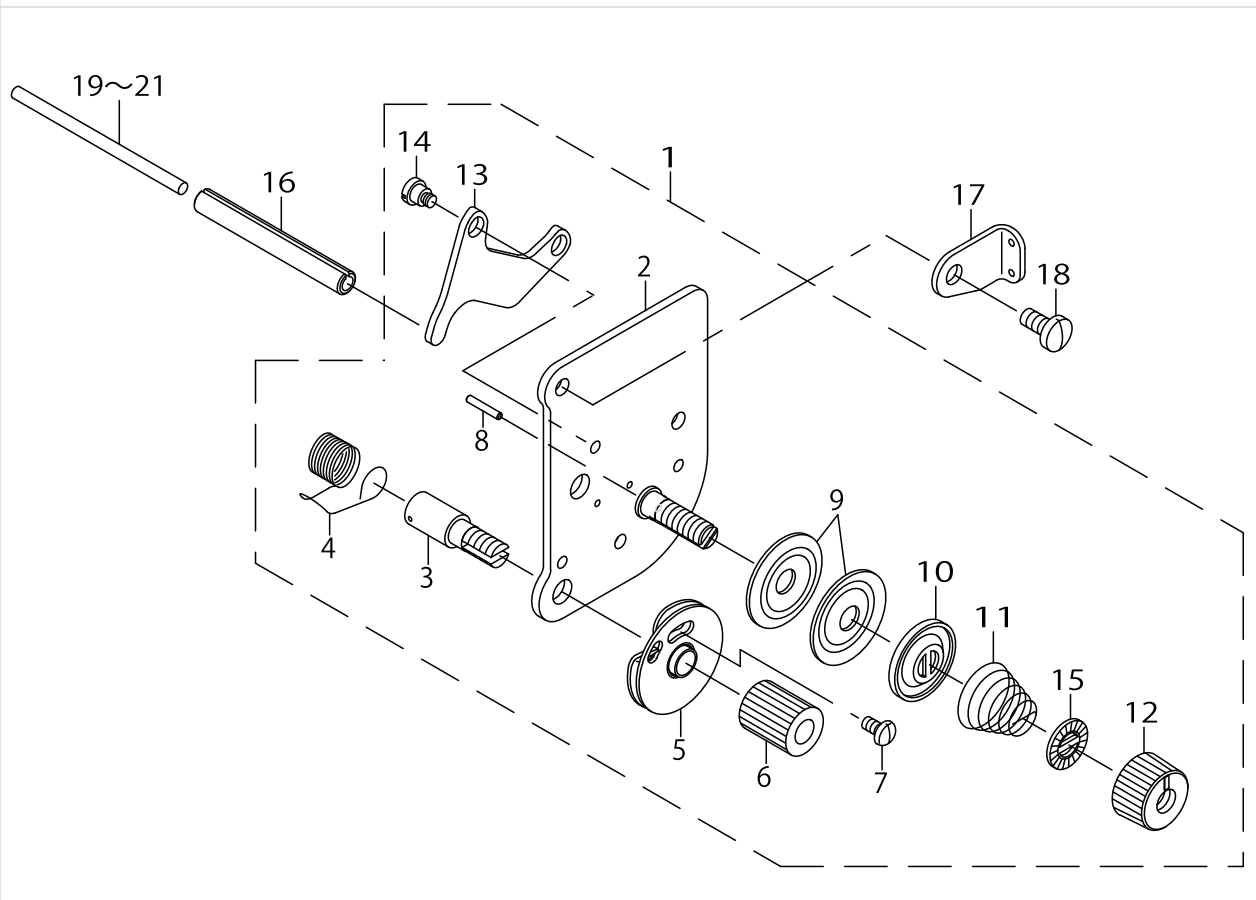


OPENER COMPONENTS (FOR DNU-1541S)

No.	Supply Code	Parts No.	Replacement	Parts name	Remarks	Choice	Step	Level	Cons	Qty	Rep. QTY
1		21404504		OPENER SHAFT						1	
2		B1805241H00		OPENER						1	
3		SM8050602TP		SCREW M5 L=6						1	
4		B1806241H00		OPENER ARM						1	
5		SM6051202TP		SCREW M5X0.8 L=12						1	
6		21404603		BUSHING, FRONT						1	
7		SS8150710TP		SCREW 15/64-28 L=7						1	
8		B1810241H00		OPENER SHAFT REAR METAL						1	
9		SS8150710TP		SCREW 15/64-28 L=7						1	
10		CS0640860SH		THRUST COLLAR ASM. D=6.35 W=8						2	
11		CS0640863SH		THRUST COLLAR D=6.35 W=8				*		2	
12	R	SS8110510SP	SS8110520TP	SCREW 11/64-40 L=5				*		4	1.00



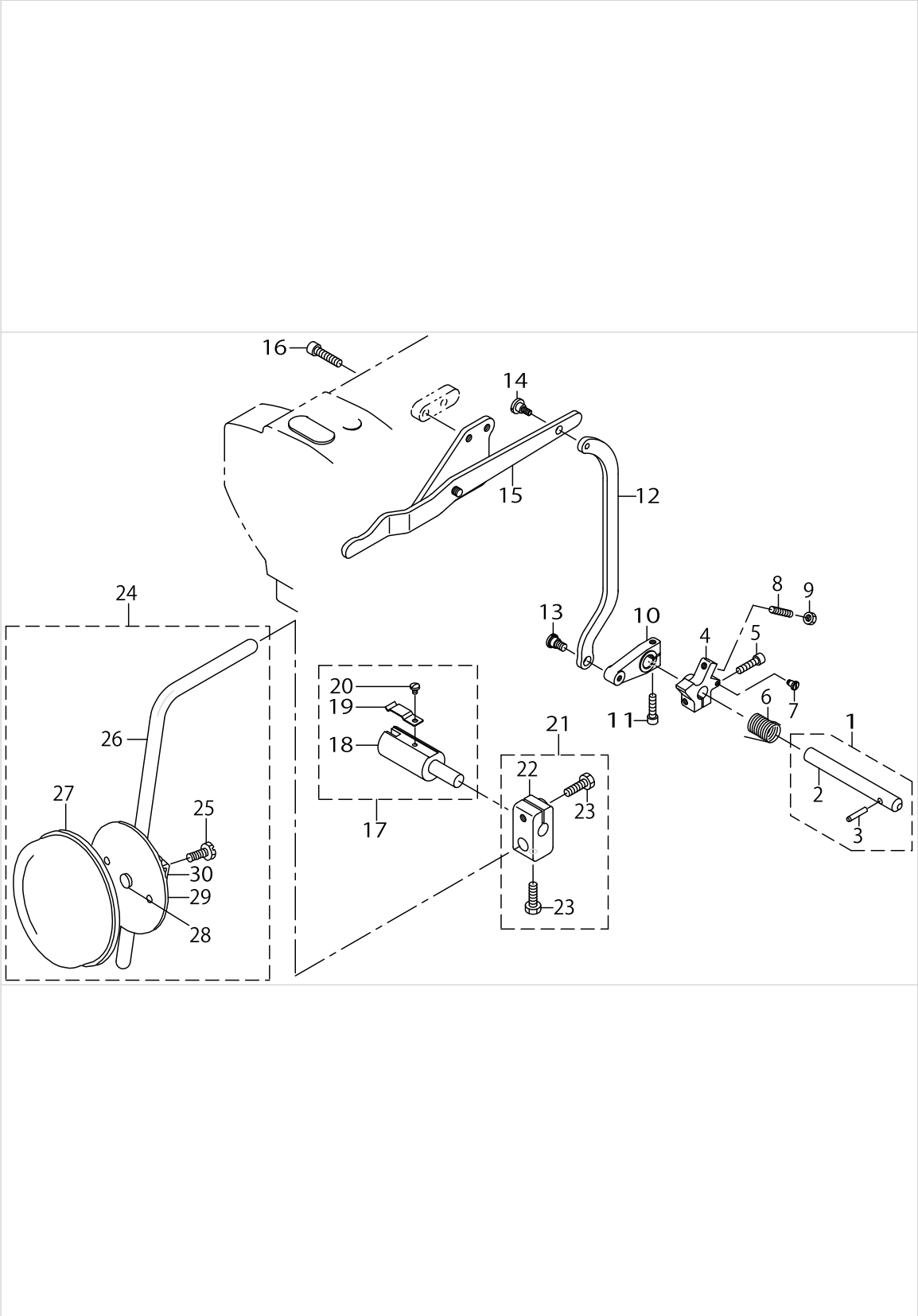
THREAD TENSION COMPONENTS



THREAD TENSION COMPONENTS

No.	Supply Code	Parts No.	Replacement	Parts name	Remarks	Choice	Step	Level	Cons	Qty	Rep. QTY
1		40103059		THREAD TENSION ASM.						1	
2		40103060		THREAD POST BASE COMPL.				*		1	
3		10320109		SCREW STUD				*		1	
4		B3128051000		THREAD TAKE-UP SPRING, A				*		1	
5		B31370510A0		TAKE-UP SPRING GUIDE DISC ASM.				*		1	
6		10320208		THRED TENSION STUD NUT				*		1	
7		SS4080620TP		SCREW 1/8-44 L=6				*		1	
8		B3127051000		TENSION RELEASE PIN, SHORT				*		1	
9		13138201		THREAD TENSION DISK				*		2	
10		22617906		THREAD TENSION DISK PRESSER				*		1	
11		B3129053000		TENSION SPRING				*		1	
12		22921308		THREAD TENSION NUT				*		1	
13		B3134521000		TENSION RELEASE LEVER				*		1	
14		SD0470281SP		HINGE SCREW D=4.7 H=2.8				*		2	
15		22921407		ROTATION STOPPER				*		1	
16		PS0600502KP		SPRING PIN						1	
17		21409909		GUIDE PLATE						1	
18		SS7110910TP		SCREW 11/64-40 L= 8.5						2	
19		21348206		TENSION RELEASE BAR						1	
20		10321107		TENSION RELEASE BAR	SELECTIVE PARTS					1	
21		23006406		TENSION RELEASE BAR	SELECTIVE PARTS					1	

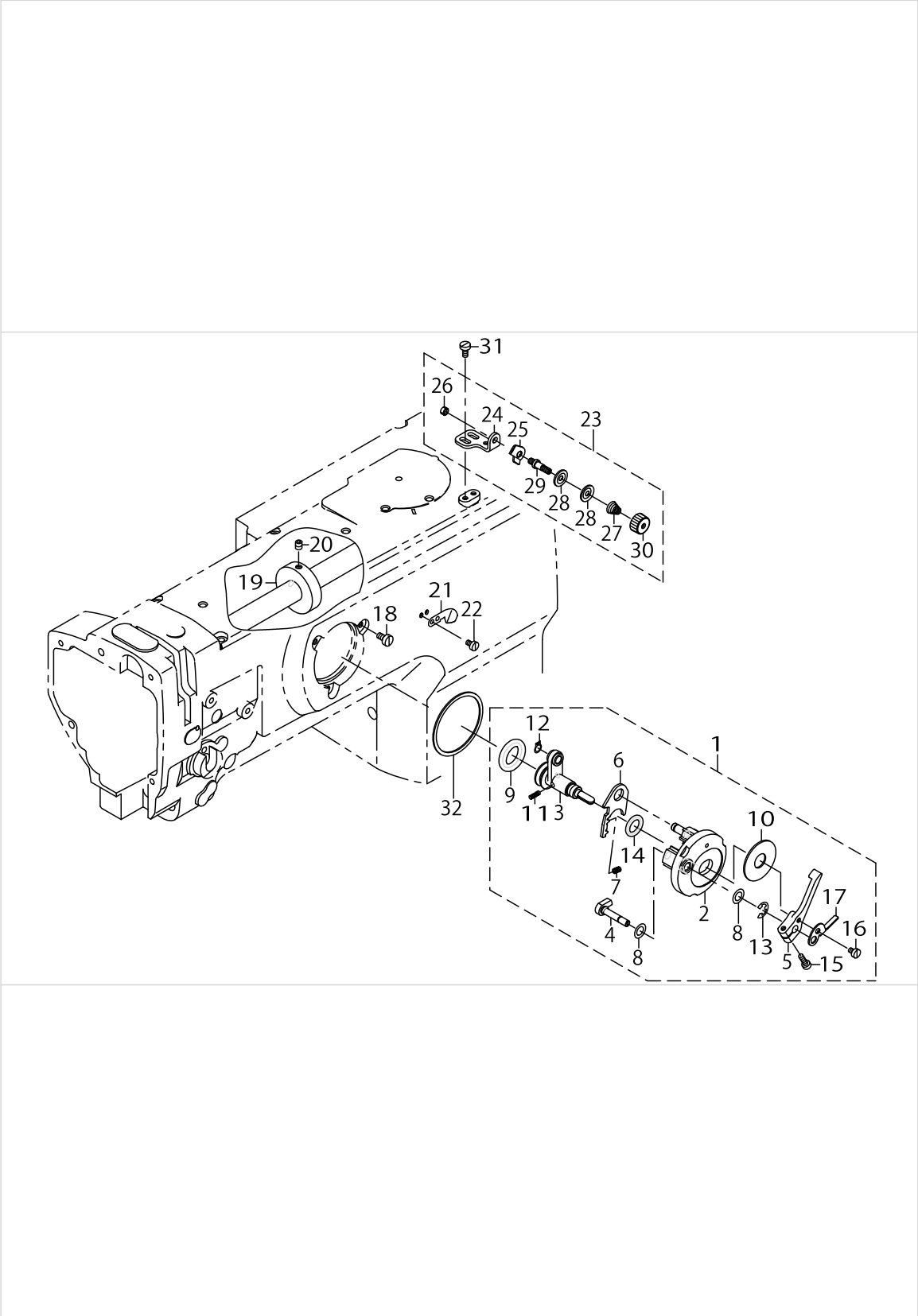
KNEE LIFTING COMPONENTS



KNEE LIFTING COMPONENTS

No.	Supply Code	Parts No.	Replacement	Parts name	Remarks	Choice	Step	Level	Cons	Qty	Rep. QTY
1		21406053		KNEE LIFTER SHAFT ASM.						1	
2		21406004		KNEE LIFTER SHAFT				*		1	
3	R	21342605	21342555	KNEE LIFTER SHAFT PIN				*		1	1.00
4		21405808		KNEE LIFTER SPRING RACK						1	
5		SM6052002TP		SCREW M5 L=20						1	
6		21405907		KNEE LIFTER SHAFT SPRING						1	
7		SD0450401SP		HINGE SCREW D= 4.5 H= 4						1	
8		SM8052502TP		SCREW M5X0.8 L=25						1	
9		NM6050001SD		NUT M5X0.8						1	
10		21405709		KNEE LIFTER ARM						1	
11		SM6052002TP		SCREW M5 L=20						1	
12		21405600		KNEE LIFTER CONNECTING PLATE						1	
13		SD0790451SP		HINGE SCREW D= 7.94 H= 4.5						1	
14		SD0700451TP		HINGE SCREW D=7 H=4.5						1	
15		21343355		KNEE LIFTER LEVER ASM.						1	
16		SM6062502TP		SCREW M6 L=25						2	
17		22863252		KNEE LIFTER JOINT ASM.						1	
18	R	22863203	22863252	KNEE LIFTER JOINT				*		1	1.00
19		B3428521000		PRESSER SPRING				*		1	
20		SS7090510SP		SCREW 9/64-40 L= 4.6				*		1	
21		22932453		BRACKET ASM.						1	
22	R	22932404	22932453	BRACKET				*		1	1.00
23		22934707		SCREW				*		2	
24		21343157		KNEE PRESS PLATE ASM.						1	
25		SM9061203SE		SCREW M6 L=12				*		1	
26	R	21343108	21343157	KNEE PRESS LEVER				*		1	1.00
27		22934509		KNEE PAD PLATE COVER				*		1	
28		22934400		KNEE PAD PLATE RUBBER				*		1	
29		22934202		KNEE PAD PLATE				*		1	
30		22934301		KNEE PAD PLATE SUPPORT				*		1	

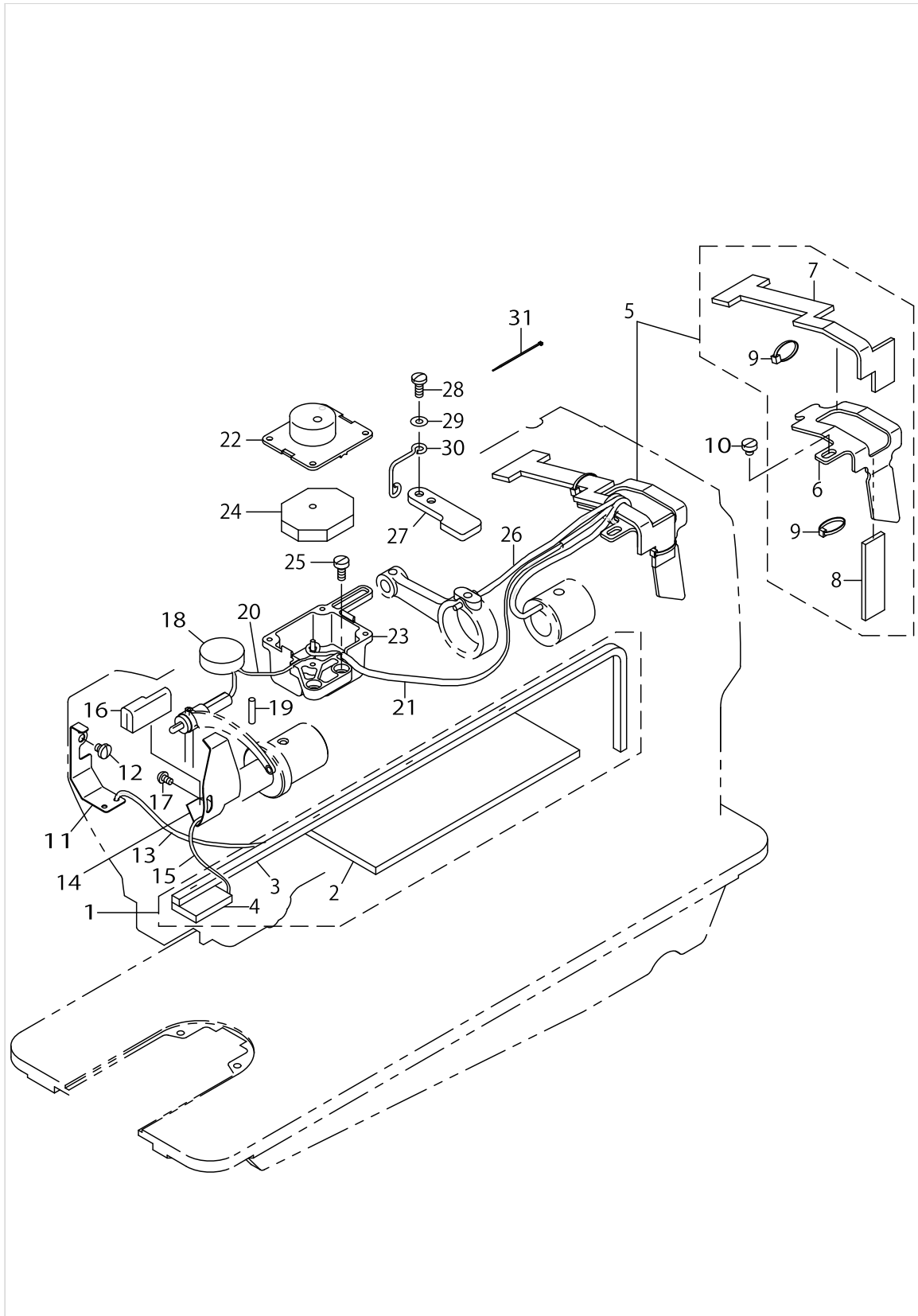
LOWER THREAD WINDER MECHANISM COMPONENTS



LOWER THREAD WINDER MECHANISM COMPONENTS

No.	Supply Code	Parts No.	Replacement	Parts name	Remarks	Choice	Step	Level	Cons	Qty	Rep. QTY
1		21357967		BOBBIN DEVICE ASM.						1	
2		22537658		BOBBIN FITTING BASIS COMPL.				*		1	
3		21357959		BOBIN SHAFT COMPL.				*		1	
4		22538151		BOBBIN CAM SHAFT COMPL.				*		1	
5		23636202		BOBBIN LEVER				*		1	
6		21356001		ADJUSTING PLATE				*		1	
7		B152989000CA		PRESSUR FOOT SPRING				*		1	
8		10618304		VERTICAL ROLLER WASHER				*		2	
9		21358205		RUBBER RING				*		1	
10		B3205210000		CUSHION				*		1	
11	R	B1148555000	22912109	SPRING				*		1	1.00
12		RC0560711KP		RETAINING RING				*		1	
13		RE0500000K0		E-RING				*		1	
14		RO092270200		RUBBER RING				*		1	
15		SS7091410SP		SCREW 9/64-40 L=13.5				*		1	
16		SS6090520SP		SCREW 9/64-40 L= 5.0				*		1	
17		14512503		BOBBIN ADJUSTING PLATE				*		1	
18		SS6110810TP		SCREW 11/64-40 L=8						3	
19		10704807		BOBBIN FRICTION WHEEL						1	
20		SM8050602TP		SCREW M5 L=6						2	
21		10502300		THREAD CUTTER						1	
22		SS6090620TP		SCREW						2	
23		21355755		LOWER THREAD GUIDE ASM.						1	
24	R	21355706	21355755	FITTING BASE				*		1	1.00
25		D3162555B00		THREAD GUIDE				*		1	
26		NS6110310SP		NUT 11/64-40				*		1	
27		22945505		THREAD TENSION SPRING				*		1	
28		40113092		THREAD TENSION DISK				*		2	
29	R	21378708	21355755	THREAD TENSION POST				*		1	1.00
30		22945703		THREAD TENSION NUT				*		1	
31		SM6040800SP		SCREW						2	
32		22538706		PACKING						1	

LUBRICATION COMPONENTS

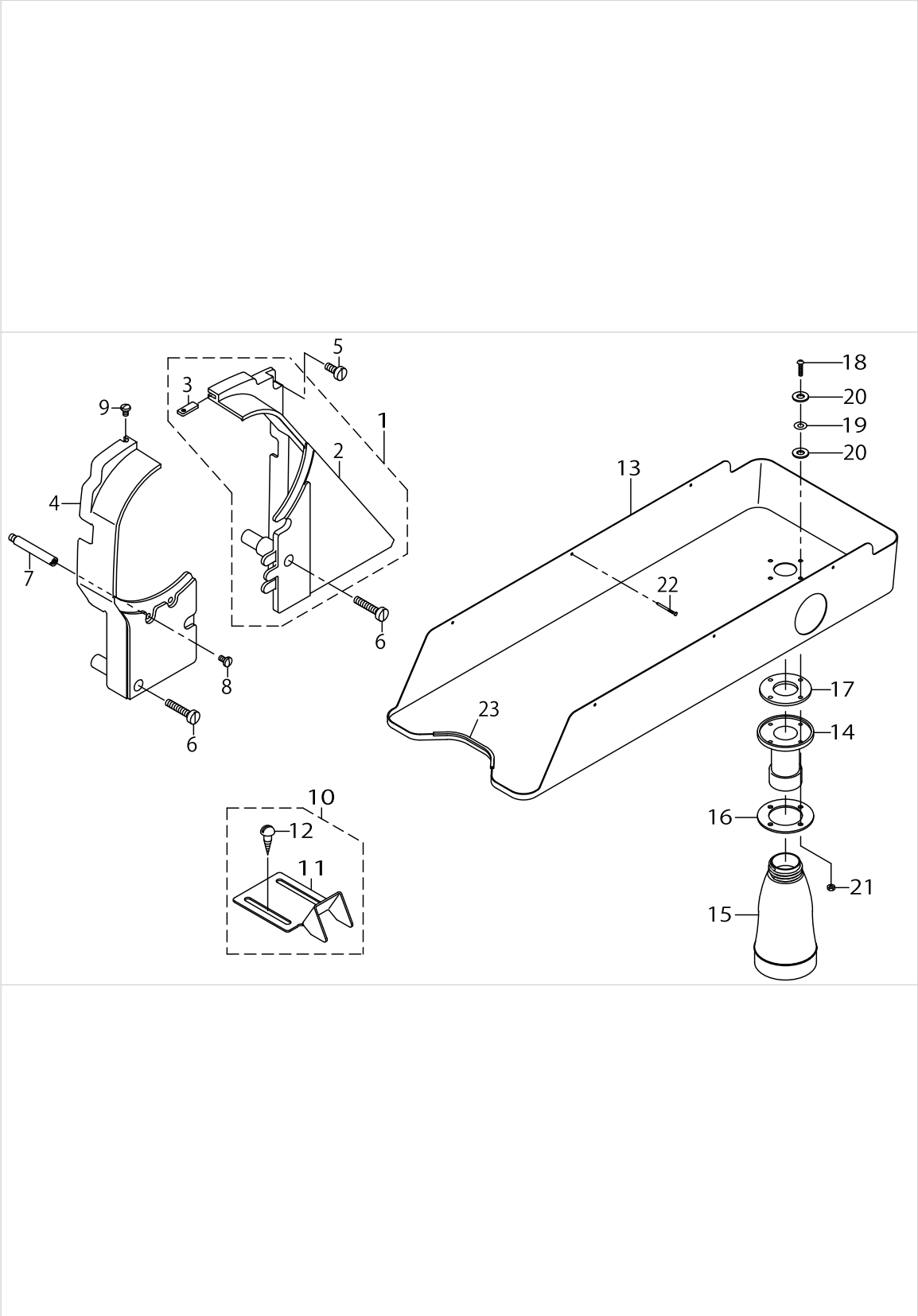


LUBRICATION COMPONENTS

No.	Supply Code	Parts No.	Replacement	Parts name	Remarks	Choice	Step	Level	Cons	Qty	Rep. QTY
1		21345756		ARM ONCE THROU- GH OIL FELT ASM.						1	
2		21345707		ARM ONCE THROUGH FELT A						1	
3		21345806		FELT B						1	
4		21345905		FACE ONCE THROUGH FELT						1	
5		21346358		FELT SUPPORT ASM.						1	
6		21346309		FELT				*		1	
7		21346507		FEED CHANGE FELT				*		1	
8		21346408		FELT				*		1	
9		EA9500B0000		CLIP CV-70S				*		2	
10		SS6110480SP		SCREW 11/64-40 L=4.3						1	
11		21340708		UPPER FEED OIL BAR PLATE						1	
12		SS7110510SP		SCREW 11/64-40 L=5						1	
13		CQ202000000		OIL WICK						.2	
14		21347000		TAKE-UP OIL PLATE						1	
15		CQ202000000		OIL WICK						.25	
16		21347208		TAKE-UP LUBRICATION FELT						1	
17		SS3090610SP		SCREW 9/64-40 L=6						1	
18		21346002		FELT						1	
19		B1412051000		FELT						1	
20		CQ252000000		OIL WICK						.3	
21		BT0500300EA		OIL TUBE						.25	
22		21407507		OIL TANK A						1	
23		21407606		OIL TANK B						1	
24		21407705		FELT						2	
25	R	SS6111010SP	SS6111010TP	SCREW 11/64-40 L= 9.5						2	1.00
26		CQ202000000		OIL WICK						.2	
27		21339700		UPPER FEED STOPPER PLATE (B)						1	
28		SS7111120TP		SCREW						2	
29		WP0450801SD		WASHER 4.5X10X0.8						1	
30		22620504		OIL WICK HOLDER						1	
31		EA9500B0000		CABLE BAND						1	



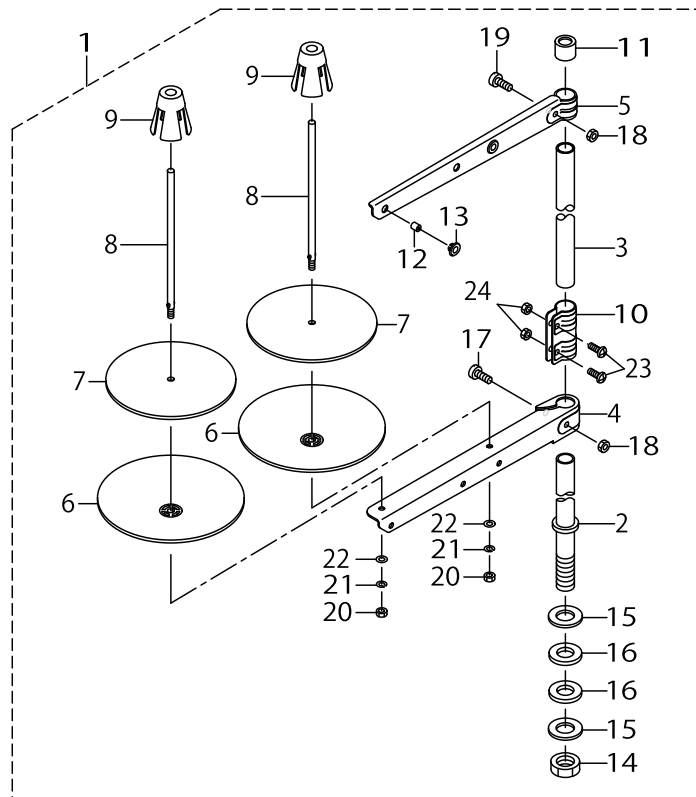
BELT COVER & OIL RESERVOIR COMPONENTS



BELT COVER & OIL RESERVOIR COMPONENTS

No.	Supply Code	Parts No.	Replacement	Parts name	Remarks	Choice	Step	Level	Cons	Qty	Rep. QTY
1		21351150		BELT COVER ASM. (RIGHT)						1	
2	R	21351101	21351150	BELT COVER (RIGHT)				*		1	1.00
3		21351002		BELT COVER AUXILIARY PLATE				*		1	
4		21351200		BELT COVER (LEFT)						1	
5		SS6151440SP		SCREW15/64-28L=14						1	
6		SS6153040SP		SCREW15/64-28L=30						2	
7		D8232241E00		BELT COVER SUPPORT A						1	
8		SS7110840SP		SCREW 11/64-40 L=7.8						1	
9		SS5110740TP		SCREW 11/64-40 L= 6.5						1	
10		10755254		BELT COVER C ASM. (FOR JE)						1	
11		10755205		BELT COVER C(JE)				*		1	
12	R	SK3482500SC	SK3482501SE	WOOD SCREW D=4.8 L=25				*		2	1.00
13		21413000		OIL RESERVOIR						1	
14		B8202205000		OIL MANAGEMENT						1	
15		B9121012000		OIL CAN						1	
16		21379003		OIL MANAGEMENT WASHER						1	
17		B8112220000		OIL SEAL						1	
18		SM3031401SE		SCREW M3X0.5 L=14						4	
19		WP0320501SC		WASHER M3						4	
20		10748101		OIL REMOVING SET- SCREW PACKING						8	
21		NM6030001SC		NUT M3						4	
22		10539906		SET NAIL						6	
23	D	MAV02130000		EDGING						1	

THREAD STAND COMPONENTS



THREAD STAND COMPONENTS

No.	Supply Code	Parts No.	Replacement	Parts name	Remarks	Choice	Step	Level	Cons	Qty	Rep. QTY
1		40096354		THREAD STAND ASM.						1	
2		40085784		SPOOL REST ROD LOWER				*		1	
3		40085785		SPOOL REST ROD UPPER				*		1	
4		40085786		SPOOL REST ARM LOWER				*		1	
5		40085787		SPOOL REST ARM UPPER				*		1	
6		40085788		SPOOL REST				*		2	
7		40085789		SPOOL REST CUSHION				*		2	
8		40085790		SPOOL PIN				*		2	
9		40085791		SPOOL RETAINER				*		2	
10		40085792		SPOOL REST ROD JOINT				*		1	
11		40085793		SPOOL REST ROD RUBBER CAP				*		1	
12		40085794		THREAD GUIDE				*		2	
13		40085795		THREAD GUIDE BUSHING				*		2	
14		40096325		SPOOL REST ROD NUT				*		1	
15		WP1612616SE		WASHER 16X30X2.6				*		2	
16		40085796		SPOOL REST ROD RUBBER CUSHION				*		2	
17		40096326		SPOOL REST ARM LOWER SCREW				*		1	
18		NM6050001SE		NUT M5				*		2	
19	R	40096327	SM4053001SE	SPOOL REST ARM UPPER SCREW				*		1	1.00
20		NM6050001SE		NUT M5				*		2	
21		WS0510002KN		SPRING WASHER M5				*		2	
22		WP0531001SC		WASHER M5				*		2	
23		SM4051405SE		SCREW M5 L=14				*		2	
24		NM6050001SE		NUT M5				*		2	

## HOW TO MAKE USE OF THIS PARTS LIST

1.As to "#01" and "#02" refer to the "Note" given at the bottom of the respective pages.

2.Codes on the "Qty" column

- Each numeral indicates the number of parts required.
- "0.1" and "2.5" indicate the length (in meters) of the respective parts.

3.Parentheses mean that the corresponding part is a subpart that constructs an assembly part.

4.Dotted lines on the Figures indicate assembly parts.

1. リストページの# 0 1、# 0 2の印は、ページ下の"注記"の説明を参照下さい。
2. 数量欄の数字は、個数を表し、0. 1、2. 5等の数値は、長さ（単位メートル）を表します。
3. 数量欄の（ ）は、組部品を構成している子部品であることを意味します。
4. イラストページの-----枠は、組構成であることを意味します。

# NUMERICAL INDEX OF PARTS

PART NO	PAGE	REF NO.	PART NO	PAGE	REF NO.	PART NO	PAGE	REF NO.
10201200	4	48	21337506	14	19	21353008	6	22
10205201	14	16	21337605	14	31	21355706	28	24
10308609	8	9	21337704	14	20	21355755	28	23
10320109	24	3	21337803	14	23	21355904	2	6
10320208	24	6	21337902	14	27	21356001	28	6
10321107	24	19~21	21338207	16	48	21357959	28	3
10337905	12	57	21338306	14	25	21357967	28	1
10502300	28	21	21338603	8	16	21358205	28	9
10503605	20	61	21338801	8	19	21378302	10	5
10509701	10	21	21338900	8	18	21378302	14	9
10539906	32	22	21339007	8	29	21378708	28	29
10618304	28	8	21339056	8	28	21379003	32	16
10704807	28	19	21339106	6	9	21387402	16	49
10748101	32	20	21339304	8	25	21388004	16	56
10755205	32	11	21339502	6	15	21388400	8	14
10755254	32	10	21339700	30	27	21401302	2	42
11009909	14	38	21340104	10	31	21401401	2	43
11038809	18	20	21340401	10	1	21401500	2	44
13138201	24	9	21340500	10	2	21401906	6	3
14512503	28	17	21340708	30	11	21402300	6	27
17912106	2	28	21340906	10	42	21402409	18	25·77
21331202	2	10	21341151	12	46	21402508	18	35·76
21331301	2	4	21341904	10	4	21402607	18	41
21331608	2	20	21342605	26	3	21402706	18	39
21331756	2	9	21343108	26	26	21402805	20	52
21331806	2	11	21343157	26	24	21403001	20	46
21332002	2	12	21343355	26	15	21403506	18	1·2
21332309	2	18	21345707	30	2	21403605	18	1·2
21332507	6	12	21345756	30	1	21403902	20	8·69~ 71·74
21332705	6	1	21345806	30	3			
21333000	6	2	21345905	30	4	21404009	18	8·69~ 71·74
21333109	6	17	21346002	30	18			
21333406	6	32	21346309	30	6	21404108	20	8·69~ 71·74
21333505	20	54	21346358	30	5	21404207	20	8·69~ 71·74
21334008	6	30	21346408	30	8			
21336300	16	51	21346507	30	7	21404306	20	8·69~ 71·74
21336508	6	20	21347000	30	14	21404405	18	37
21336557	6	19	21347109	10	12	21404504	22	1
21336607	14	43	21347208	30	16	21404603	22	6
21336656	14	42	21347406	8	31	21405006	14	1·68
21336706	16	47	21348206	24	19~21	21405105	18	26·75
21336805	14	36	21351002	32	3	21405204	8	2
21337209	14	34	21351101	32	2	21405303	18	31
21337308	14	29	21351150	32	1	21405501	20	26·75
21337407	14	22	21351200	32	4	21405600	26	12

# NUMERICAL INDEX OF PARTS

PART NO	PAGE	REF NO.	PART NO	PAGE	REF NO.	PART NO	PAGE	REF NO.
21405709	26	10	22921407	24	15	40085791	34	9
21405808	26	4	22932404	26	22	40085792	34	10
21405907	26	6	22932453	26	21	40085793	34	11
21406004	26	2	22934202	26	29	40085794	34	12
21406053	26	1	22934301	26	30	40085795	34	13
21406103	12	48	22934400	26	28	40085796	34	16
21406509	10	27	22934509	26	27	40096325	34	14
21406608	12	49	22934707	26	23	40096326	34	17
21407309	16	69	22945505	28	27	40096327	34	19
21407408	16	64	22945703	28	30	40096354	34	1
21407507	30	22	23006406	24	19~21	40103059	24	1
21407606	30	23	23618101	18	30	40103060	24	2
21407705	30	24	23618200	18	28	40108674	2	22
21407804	18	7	23618408	18	33	40108675	2	24
21408505	2	27	23636202	28	5	40113092	28	28
21408554	2	26	26225201	10	28	A1111007000	2	38
21409909	24	17	40011400	14	32	B1103141H00	2	40
21410006	2	34	40016798	2	1	B1112241H00	2	37
21413000	32	13	40018339	10	15	B1112241HA0	2	36
21437900	10	36	40018340	10	14	B1132521000	2	29
22537658	28	2	40018341	10	22	B1148555000	28	11
22538151	28	4	40019114	2	3	B1155141H00	18	6
22538706	28	32	40019905	6	36	B1203512000	6	29
22604300	6	26	40019907	16	1·68	B1210051000	6	10
22604904	6	24	40019908	16	58·59·61	B1214019000	20	55
22605406	6	4	40019910	16	58·59·61	B1305055000A	20	56
22609309	14	11	40019911	16	58·59·61	B1307055000	20	57
22609408	14	8	40019926	16	62	B1308055000	20	58
22617906	24	10	40026828	20	35·76	B1309055000	20	59
22619100	4	49	40027746	8	26	B1310055000	20	60
22620504	30	30	40033026	10	11	B1312563000A	20	48
22623201	20	67	40033029	10	18	B1313055000	20	51
22814909	8	27	40033030	10	23	B1314055000	20	62
22814909	10	38	40033031	10	40	B1401053000	8	5
22863203	26	18	40033032	10	39	B1410771000	8	21
22863252	26	17	40038711	16	63	B1411053000	8	6
22901805	4	52	40038712	16	65	B1412051000	8	7
22904106	10	7	40082634	20	25·77	B1412051000	30	19
22904106	14	14	40085784	34	2	B1414232000	8	22
22904155	10	6	40085785	34	3	B1414555000	10	20
22904155	14	13	40085786	34	4	B1418761000	16	44
22907604	10	43	40085787	34	5	B1420563000	8	1
22912000	14	40	40085788	34	6	B1437051000	8	24
22912109	14	41	40085789	34	7	B1462053000	12	47
22921308	24	12	40085790	34	8	B14670530A0	10	24

# NUMERICAL INDEX OF PARTS

PART NO	PAGE	REF NO.	PART NO	PAGE	REF NO.	PART NO	PAGE	REF NO.
B1467563000	8	12	CQ202000000	30	26	SD0790451SP	26	13
B1468053000	10	25	CQ252000000	12	58	SD0800402TP	14	30
B1470241H00	12	51	CQ252000000	30	20	SD0800481SP	10	45
B1471241H00	12	52	CQ303000000	6	7	SD0900701TP	14	17
B1501241H00	12	53	CQ505000000	6	11	SD1000801SH	16	50
B1502246000	10	44	CS0640860SH	22	10	SK3482500SC	32	12
B1510155000	12	54	CS0640863SH	22	11	SM3031401SE	32	18
B1525241H00	12	56	CS0791010SH	18	12	SM4051405SE	34	23
B1525241HA0	12	55	CS0791016SH	18	13	SM6040800SP	28	31
B152989000CA	28	7	CS0950810SH	18	43	SM6051202TP	22	5
B1603512000	14	6	CS0950816SH	18	44	SM6052002TP	26	11
B1604012000A	14	2	CS1201010SH	16	52	SM6061802TP	14	35
B1639051000	20	50	CS1201011SH	16	53	SM6062502TP	10	37
B1802141H00A	18	4	D1455055B00	10	33	SM6062502TP	26	16
B1803141H00	18	10	D1456055B00	10	32	SM8050512TP	14	5
B1805241H00	22	2	D3162555B00	28	25	SM8050602TP	22	3
B1806241H00	22	4	D8232241E00	32	7	SM8050602TP	28	20
B1810241H00	22	8	EA9500B0000	10	13	SM8050612TP	16	46
B1829241H00	18	21	EA9500B0000	30	31	SM8052502TP	26	8
B1830241HA0	18	15-16	EA9500B0100	8	32	SM8060602TP	6	28
B1830241SA0	18	15-16	M1351731600	8	11	SM8080802TP	8	20
B1834512000A	18	23	MAV02130000	32	23	SM8080812TP	6	14
B1837241H00	18	18-19	NM6030001SC	32	21	SM9061203SE	26	25
B1837241S00	18	18-19	NM6050001SD	26	9	SS2090710TP	2	31
B1906051000	6	6	NM6050001SE	34	24	SS2110920TP	2	35
B3127051000	24	8	NS6110310SP	28	26	SS3090610SP	30	17
B3128051000	24	4	NS6110530SP	10	35	SS4080620TP	16	60
B3129053000	24	11	NS6110530SP	18	24	SS4080620TP	24	7
B3134521000	24	13	NS6680320SP	14	18	SS4110815SP	2	19
B31370510A0	24	5	PS0600502KP	24	16	SS4111015SP	2	45
B3138512000	2	32	RC0560711KP	28	12	SS4111215SP	2	2
B3205210000	28	10	RE0500000K0	20	49	SS4150915SP	4	53
B3428521000	26	19	RE0500000K0	28	13	SS5090610SP	2	23
B8112220000	32	17	RE0500711KP	14	4	SS5110740TP	32	9
B8202205000	32	14	RE0900000K0	16	55	SS6060210SP	2	39
B9117201000	18	17	RO092270200	14	39	SS6090520SP	28	16
B9121012000	32	15	RO092270200	28	14	SS6090620TP	18	32
BT0500300EA	30	21	SB32000060A	18	29-72-73	SS6090620TP	28	22
CM300200001	4	51	SB32000060B	20	29-72-73	SS6090910TP	12	50
CM301300001	4	50	SB32000060C	20	29-72-73	SS6091022TP	8	17
CQ200000000	18	3	SD0380551SL	2	30	SS6110480SP	30	10
CQ202000000	6	18	SD0450401SP	26	7	SS6110810TP	28	18
CQ202000000	8	23	SD0470281SP	24	14	SS6111010SP	30	25
CQ202000000	14	45	SD0640322TP	20	65	SS6111610SP	14	33
CQ202000000	16	45	SD0700451TP	26	14	SS6111620SP	18	22



NUMERICAL INDEX OF PARTS

PART NO	PAGE	REF NO.	PART NO	PAGE	REF NO.
SS6120930TP	16	57	SS8150822TP	6	31
SS6121610TP	14	12	SS8150822TP	14	24
SS6121860SP	14	37	SS8150822TP	18	11
SS6151440SP	32	5	SS8151150TP	8	3
SS6151780SP	10	26	SS8151150TP	14	10
SS6151920SP	10	29	SS8151150TP	18	27
SS6152440SP	8	30	SS8151550SP	6	33
SS6153040SP	32	6	SS8660610TP	10	8
SS6661110SP	6	25	SS8660610TP	14	54
SS6661110SP	20	68	SS8660610TP	16	54
SS7080510TP	8	10	SS8660610TP	18	9
SS7090510SP	26	20	SS8660612TP	10	3
SS7090520TP	2	33	SS8660612TP	18	40
SS7090610SP	14	26	SS8660810TP	6	37
SS7090910SP	8	8	TA0750704R0	2	15
SS7090910TP	14	28	TA0750704R0	6	35
SS7091410SP	28	15	TA0750704R0	10	10
SS7110510SP	10	19	TA1050504R0	2	47
SS7110510SP	30	12	TA1050504R0	4	47
SS7110710SP	6	23	TA1250504R0	2	16
SS7110710SP	16	67	TA1450404R0	2	8
SS7110720SP	2	41	WP0320501SC	32	19
SS7110740TP	18	34	WP0450801SD	30	29
SS7110830SP	8	15	WP0482086SD	10	34
SS7110840SP	32	8	WP0501046SC	10	17
SS7110910TP	8	13	WP0531001SC	34	22
SS7110910TP	10	41	WP1612616SE	34	15
SS7110910TP	14	66	WS0510002KN	34	21
SS7110910TP	16	66			
SS7110910TP	24	18			
SS7111120TP	30	28			
SS7111410TP	14	7			
SS7150740SP	10	30			
SS7150910TP	2	21			
SS7621040SP	2	7			
SS8090540SP	20	66			
SS8110410TP	20	45			
SS8110422TP	18	14			
SS8110510SP	22	12			
SS8111010TP	12	59			
SS8150710TP	6	34			
SS8150710TP	10	9			
SS8150710TP	18	53			
SS8150710TP	20	53			
SS8150710TP	22	9			