

MODEL : T042S

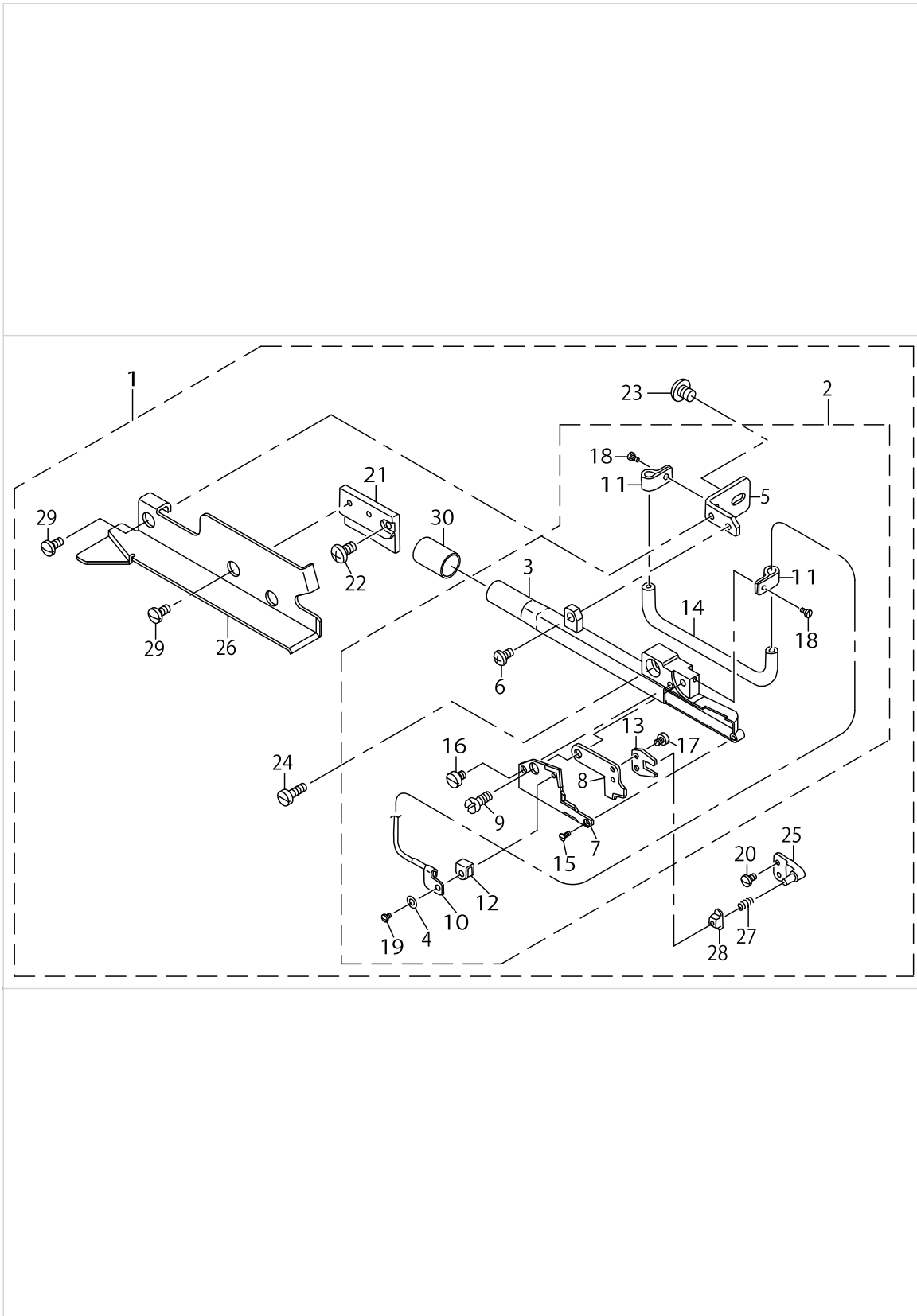
List No : 1463-01

PARTS LIST

Published:05/12/2017

CONTENTS

| | |
|--|---|
| T042S..... | 1 |
| HOW TO MAKE USE OF THIS PARTS LIST | 3 |



T042S

| No. | Supply Code | Parts No. | Replacement | Parts name | Remarks | Choice | Step | Level | Cons | Qty | Rep. QTY |
|-----|-------------|--------------|-------------|----------------------------|---------|--------|------|-------|------|-----|----------|
| 1 | | 40045967 | | PNEUMATIC SIDE CUTTER ASSY | | | | | | 1 | |
| 2 | R | 40045965 | 40045967 | KNIFE REST ASSY | | | | * | | 1 | 1.00 |
| 3 | R | 40045966 | 40045967 | KNIFE REST COMPL. | | | | * | | 1 | 1.00 |
| 4 | | WP0250516SD | | WASHER 2.5X6X0.5 | | | | * | | 1 | |
| 5 | | MAT03604000 | | KNIFE REST PLATE | | | | * | | 1 | |
| 6 | | SS4110715SP | | SCREW 11/64-40 L=7 | | | | * | | 1 | |
| 7 | | MAT0360500A | | FIXING KNIFE | | | | * | | 1 | |
| 8 | | MAT03606000 | | WORK KNIFE | | | | * | | 1 | |
| 9 | | MAT03607000 | | KNIFE SHAFT | | | | * | | 1 | |
| 10 | | MAT036090A0 | | OIL SUPPLY HOLDER ASM. | | | | * | | 1 | |
| 11 | | MAT03610000 | | OIL SUPPLY PIPE BRACKET | | | | * | | 2 | |
| 12 | | MAT02111000 | | SPRING | | | | * | | 1 | |
| 13 | | MAT02502000 | | DRIVING LEVER | | | | * | | 1 | |
| 14 | | BP400000000 | | VINYL TUBE, WHITE D=4 | | | | * | | 0.2 | |
| 15 | | SS2060510SP | | SCREW 3/32-56 L=4.5 | | | | * | | 1 | |
| 16 | | SS6090520SP | | SCREW 9/64-40 L= 5.0 | | | | * | | 1 | |
| 17 | | SS6080410SP | | SCREW 1/8-44 L=4 | | | | * | | 2 | |
| 18 | | SS6060410TP | | SCREW 3/32-56 L=3.5 | | | | * | | 2 | |
| 19 | | SS7060310SP | | SCREW 3/32-56 L=3 | | | | * | | 1 | |
| 20 | | SS7080520SP | | SCREW 1/8-44 L=4.9 | | | | * | | 2 | |
| 21 | | MAT03603000A | | KNIFE REST BRACKET | | | | * | | 1 | |
| 22 | | SS4120915SP | | SCREW 3/16-28 L=9 | | | | * | | 1 | |
| 23 | | SS4150715SP | | SCREW 15/64-28 L=7 | | | | * | | 1 | |
| 24 | | SS6111210SP | | SCREW 11/64-40 L=12 | | | | * | | 1 | |
| 25 | | MAT03608000 | | DRIVE PIN | | | | * | | 1 | |
| 26 | | 40045964 | | SIDE VOVER COMPL. | | | | * | | 1 | |
| 27 | | MAT02106000 | | SPRING | | | | * | | 1 | |
| 28 | | 40045962 | | SLIDE BLOCK | | | | * | | 1 | |
| 29 | | SS7110840SP | | SCREW 11/64-40 L=7.8 | | | | * | | 2 | |
| 30 | | 40045961 | | VINYL PIPE | | | | * | | 1 | |

HOW TO MAKE USE OF THIS PARTS LIST

1.As to "#01" and "#02" refer to the "Note" given at the bottom of the respective pages.

2.Codes on the "Qty" column

- Each numeral indicates the number of parts required.
- "0.1" and "2.5" indicate the length (in meters) of the respective parts.

3.Parentheses mean that the corresponding part is a subpart that constructs an assembly part.

4.Dotted lines on the Figures indicate assembly parts.

1. リストページの# 0 1、# 0 2の印は、ページ下の"注記"の説明を参照下さい。
2. 数量欄の数字は、個数を表し、0. 1、2. 5等の数値は、長さ（単位メートル）を表します。
3. 数量欄の（ ）は、組部品を構成している子部品であることを意味します。
4. イラストページの-----枠は、組構成であることを意味します。

NUMERICAL INDEX OF PARTS

| PART NO | PAGE | REF NO. |
|--------------|------|---------|
| 40045961 | 2 | 30 |
| 40045962 | 2 | 28 |
| 40045964 | 2 | 26 |
| 40045965 | 2 | 2 |
| 40045966 | 2 | 3 |
| 40045967 | 2 | 1 |
| BP400000000 | 2 | 14 |
| MAT02106000 | 2 | 27 |
| MAT02111000 | 2 | 12 |
| MAT02502000 | 2 | 13 |
| MAT03603000A | 2 | 21 |
| MAT03604000 | 2 | 5 |
| MAT0360500A | 2 | 7 |
| MAT03606000 | 2 | 8 |
| MAT03607000 | 2 | 9 |
| MAT03608000 | 2 | 25 |
| MAT036090A0 | 2 | 10 |
| MAT03610000 | 2 | 11 |
| SS2060510SP | 2 | 15 |
| SS4110715SP | 2 | 6 |
| SS4120915SP | 2 | 22 |
| SS4150715SP | 2 | 23 |
| SS6060410TP | 2 | 18 |
| SS6080410SP | 2 | 17 |
| SS6090520SP | 2 | 16 |
| SS6111210SP | 2 | 24 |
| SS7060310SP | 2 | 19 |
| SS7080520SP | 2 | 20 |
| SS7110840SP | 2 | 29 |
| WP0250516SD | 2 | 4 |