

MODEL : SC-921

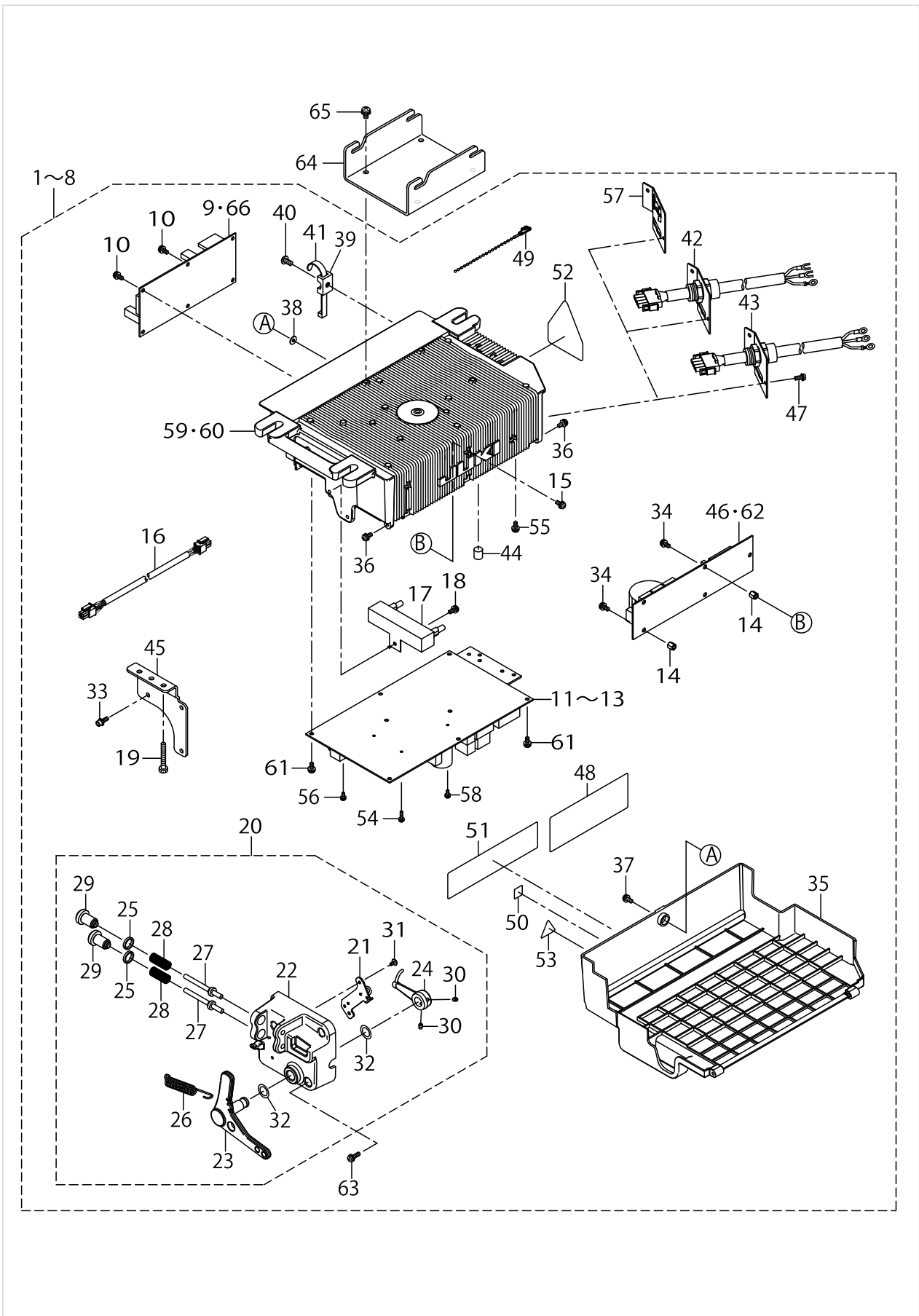
List No : 1549-04

PARTS LIST

Published:05/12/2017

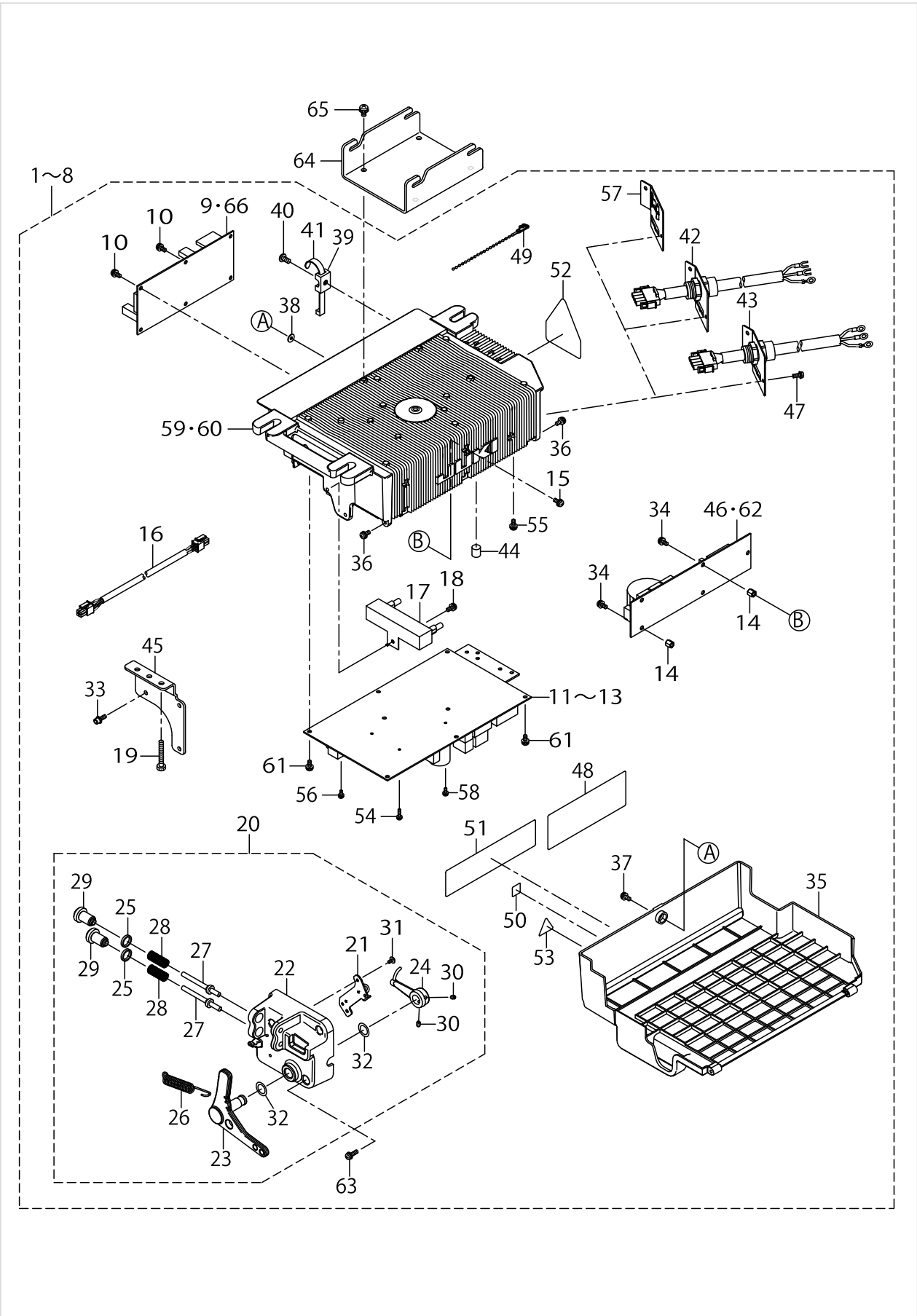
CONTENTS

SC-921	1
SC-921(Accessorie Parts)	13
CP-18	17
REACTOR BOX 2P (FOR CE).....	19
HOW TO MAKE USE OF THIS PARTS LIST	

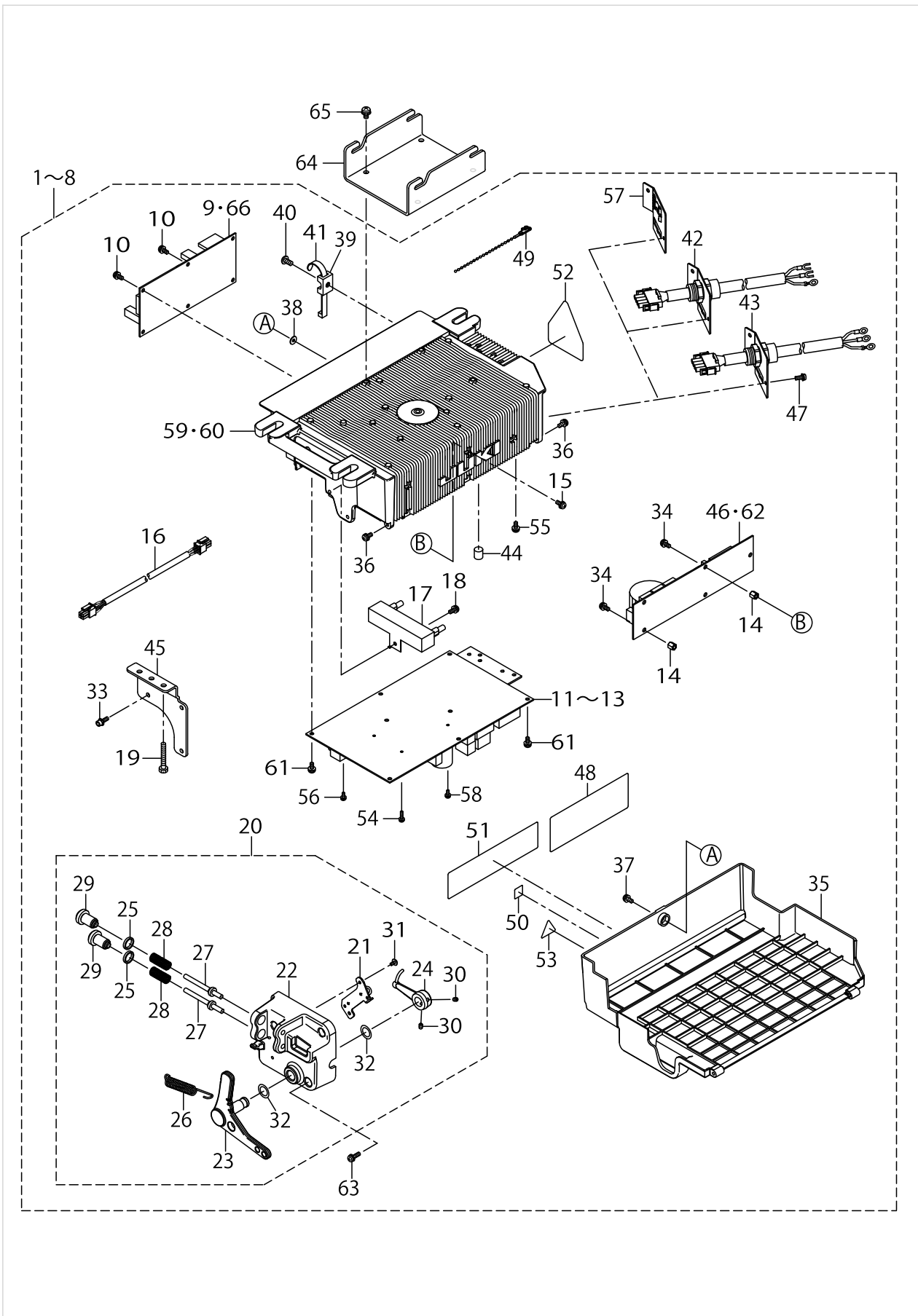


SC-921

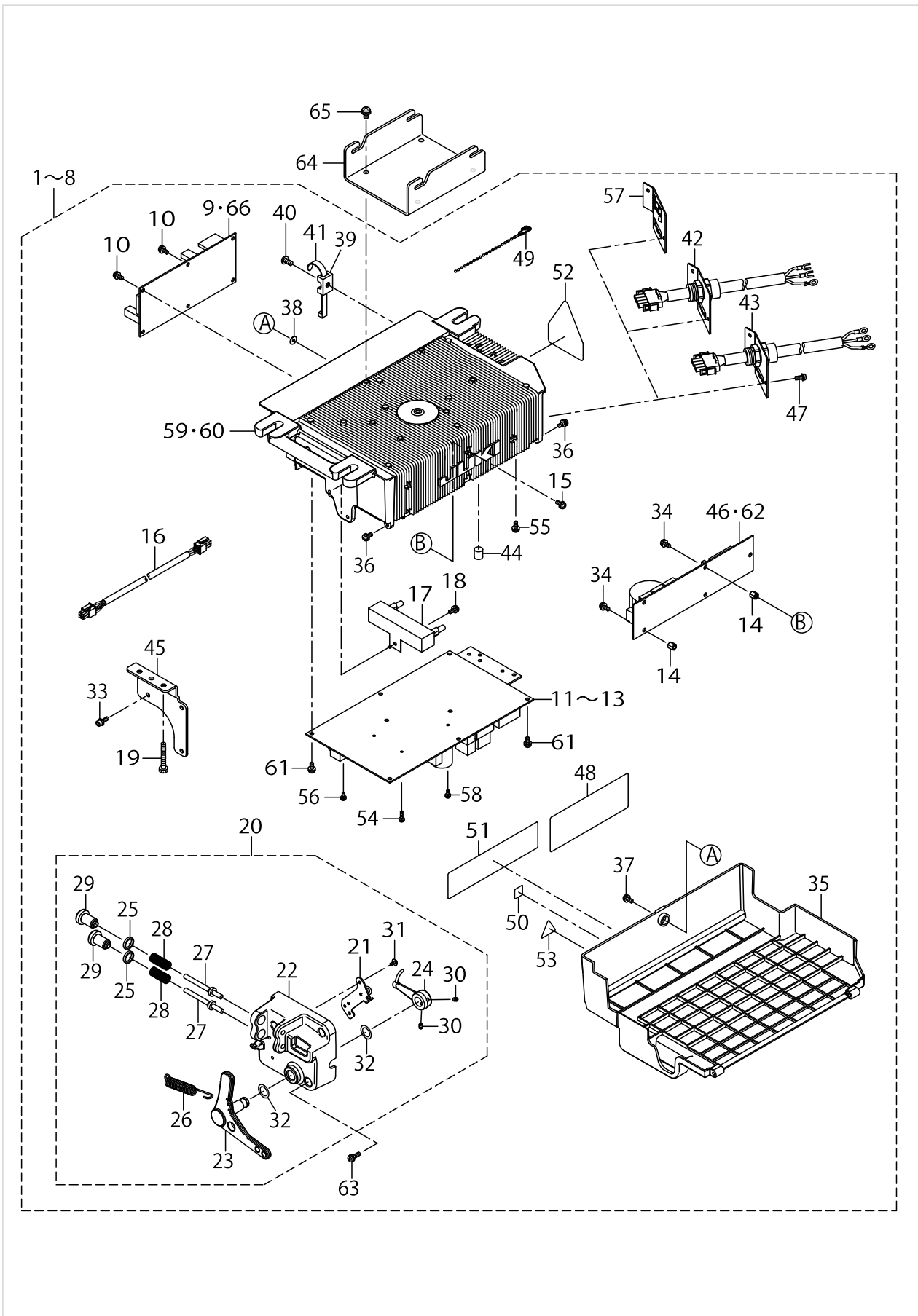
No.	Supply Code	Parts No.	Replacement	Parts name	Remarks	Choice	Step	Level	Cons	Qty	Rep. QTY
1		40095152		PSC UNIT 921 1P 1-00-120V PDL-SP LA	FOR 1-PHASE 100~120V LA PFL, SPECIFICATIONS WITH PEDAL					1	
2		40095153		PSC UNIT 921 1P 2-20-240V PDL-SP CE	FOR 1-PHASE 220~240V CE PFL, SPECIFICATIONS WITH PEDAL					1	
3		40095154		PSC UNIT 921 1P 2-20-240V PDL-SP	FOR 1-PHASE 220~240V PFL, SPECIFICATIONS WITH PEDAL					1	
4		40095155		PSC UNIT 921 3P 2-00-240V PDL-SP	FOR 3-PHASE 200~240V 3-PHASE JA PFL, SPECIFICATIONS WITH PEDAL					1	
5		40100919		PSC UNIT 921 1P 100-120V LA	FOR 1-PHASE 100~120V LA PFL, SEPARATION SPECIFICATIONS PEDAL					1	
6		40100920		PSC UNIT 921 1P 220-240V	FOR 1-PHASE 220~240V PFL, SEPARATION SPECIFICATIONS PEDAL					1	
7		40100921		PSC UNIT 921 1P 220-240V CE	FOR 1-PHASE 220~240V CE PFL, SEPARATION SPECIFICATIONS PEDAL					1	
8		40100922		PSC UNIT 921 3P 200-240V	FOR 3-PHASE 200~240V 3-PHASE JA PFL, SEPARATION SPECIFICATIONS PEDAL					1	
9		40095143		CTL921_PCB ASSY				*		1	
10		SL4041081SC		SCREW M4 L=10				*		6	
11		40089241		PWR-CE PCB ASSY	FOR 1-PHASE 220~240V CE PFL, SPECIFICATIONS WITH PEDAL, SEPARATION SPECIFICATIONS PEDAL			*		1	



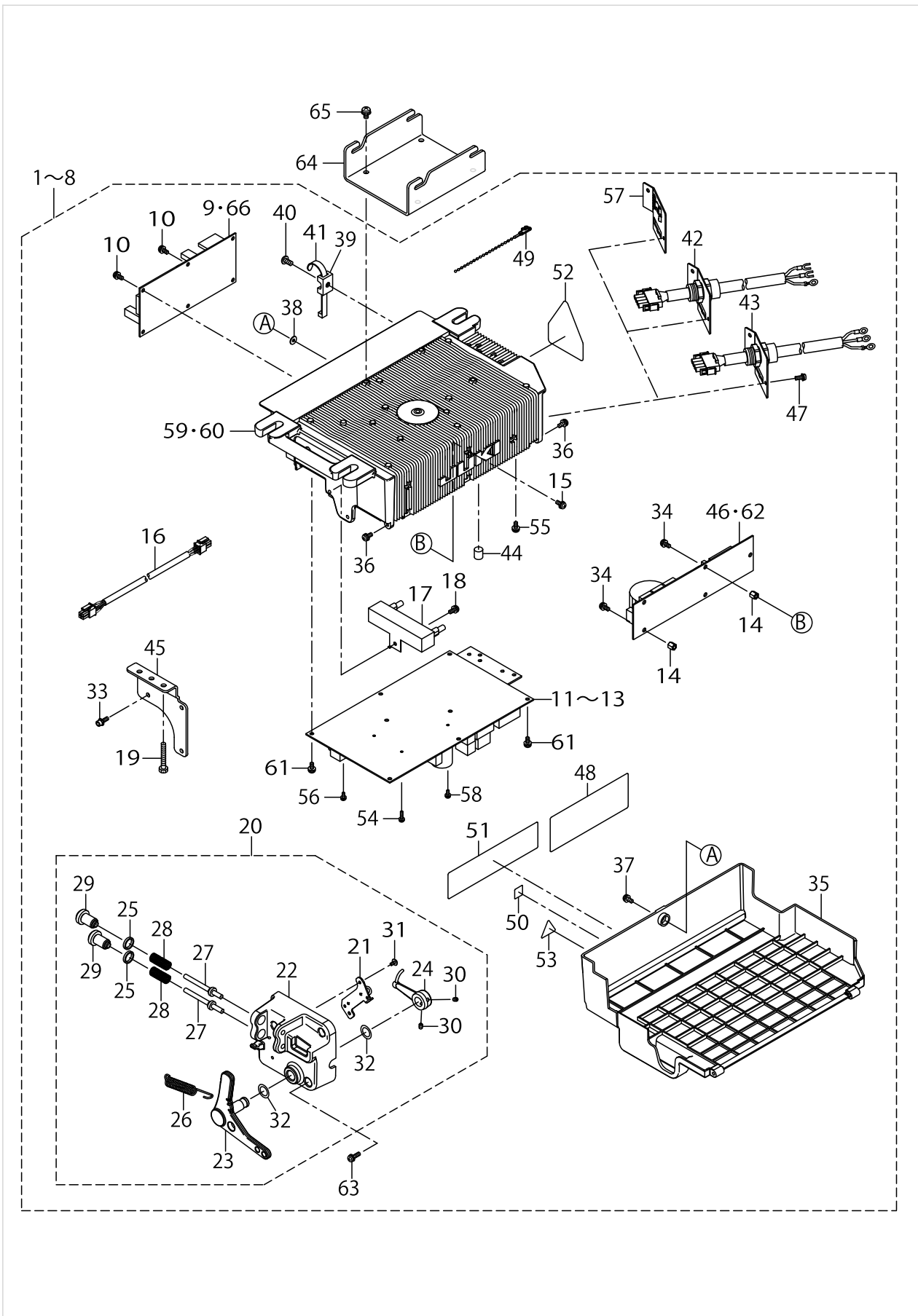
No.	Supply Code	Parts No.	Replacement	Parts name	Remarks	Choice	Step	Level	Cons	Qty	Rep. QTY
12		40087129		PWR-S PCB ASSY	FOR 1-PHASE 220~240V PFL, SPECIFICATIONS WITH PEDAL, SEPARATION SPECIFICATIONS PEDAL			*		1	
13		40087147		PWR-T PCB ASSY	FOR 3-PHASE 200~240V PFL, 1-PHASE 100~120V LA PFL, 3-PHASE 200~240V JA PFL, SPECIFICATIONS WITH PEDAL, SEPARATION SPECIFICATIONS PEDAL			*		1	
14		40088311		STUD	FOR 1-PHASE 220~240V CE PFL, 3-PHASE 200~240V PFL, 1-PHASE 100~120V LA PFL, 3-PHASE 200~240V JA PFL, SPECIFICATIONS WITH PEDAL, SEPARATION SPECIFICATIONS PEDAL			*		5	
15		SL4041081SC		SCREW M4 L=10	FOR 1-PHASE 220~240V CE PFL, 3-PHASE 200~240V PFL, 1-PHASE 100~120V LA PFL, 3-PHASE 200~240V JA PFL, SPECIFICATIONS WITH PEDAL, SEPARATION SPECIFICATIONS PEDAL			*		5	
16		40087153		DC POWER SUPPLY CORD ASSY				*		1	
17		40087154		RESISTANCE_A_ASSY				*		1	
18		SL4041091SC		SCREW M4 L=10				*		1	
19		ST9053511SR		TAPPING SCREW M5X35	SEPARATION SPECIFICATIONS PEDAL			*		2	
20		40094259		PEDAL SENSOR ASM	SPECIFICATIONS WITH PEDAL			*		1	
21		40094260		SENSOR COIL HOLD ASSY	SPECIFICATIONS WITH PEDAL			*		1	
22		40042130		PEDAL_SENSOR_BASE				*		1	
23		40087156		PEDAL_LEVER_A				*		1	



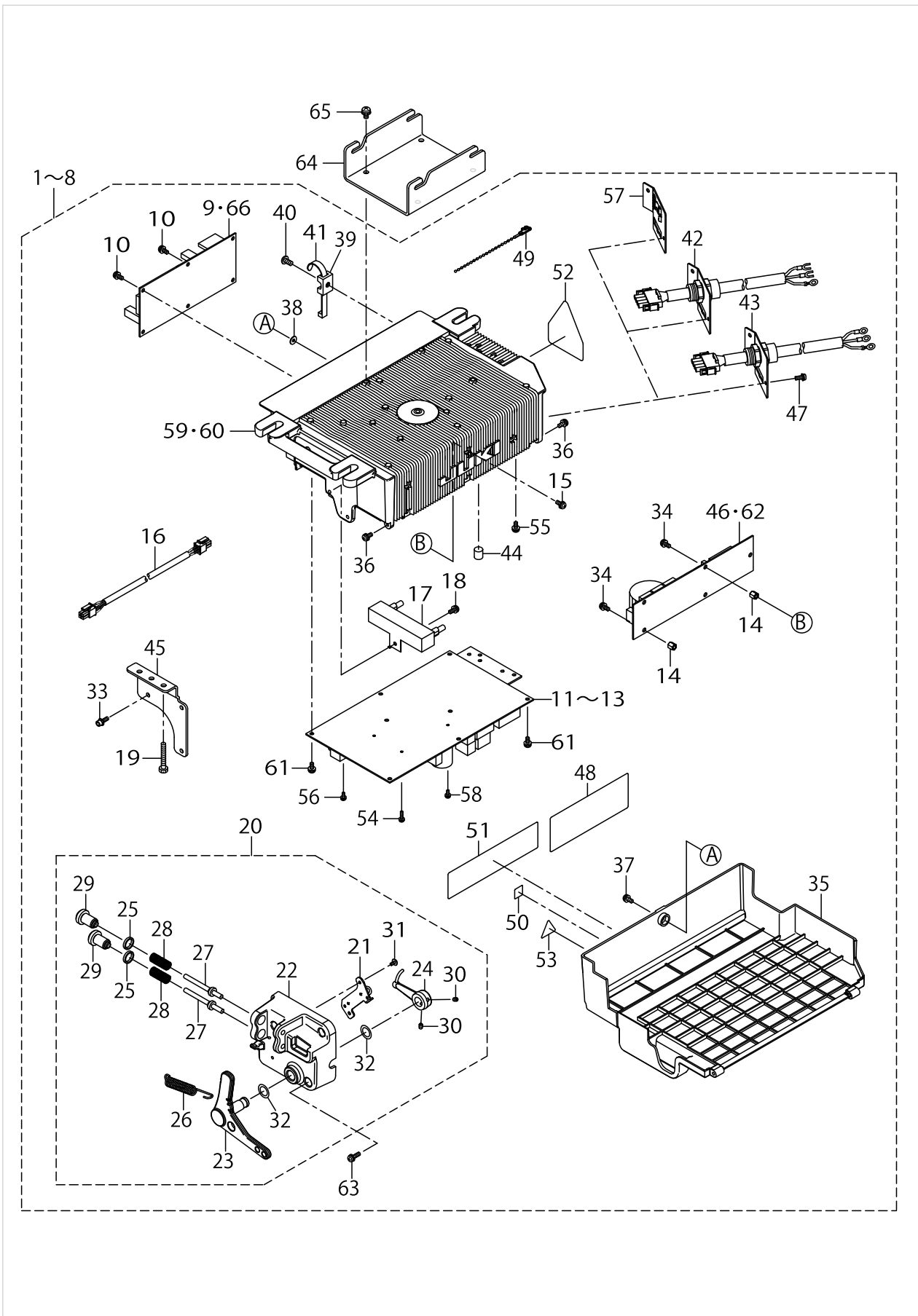
No.	Supply Code	Parts No.	Replacement	Parts name	Remarks	Choice	Step	Level	Cons	Qty	Rep. QTY
24		40042133		PEDAL_LEVER_B				*		1	
25		40006202		ADJUST_NUT				*		2	
26		40006207		FRONT_SPRING				*		1	
27		40006208		SPRING_SHAFT_A				*		2	
28		40049426		SPRING_C				*		2	
29		40006212		ADJUST_SCREW				*		2	
30		SM8040612TP		SCREW M4 L=6				*		2	
31		SV4030601SR		SCREW M3 L=6				*		2	
32		40088315		THRUST COLLAR				*		2	
33		SL6041292TN		SCREW	SEPARATI- ON SPECI- FICATIONS PEDAL			*		3	
34		SL4040681SC		COMBINATION SCREW M4X8	FOR 1-PH- ASE 220~-- 240V CE P- FL, 3-PHA- SE 200~2- 40V PFL, 1- -PHASE 1- 00~120V LA PFL, 3-- PHASE 20- 0~240V JA PFL, SPEC- IFICATIONS WITH PED- AL, SEPAR- ATION SP- ECIFICATI- ONS PEDAL			*		5	
35		40087167		UNDER_COVER				*		1	
36		40087157		HINGE SCREW				*		2	
37		SL4041681SC		SCREW M4 L=16				*		1	
38		M8002430000		STOPPER				*		1	
39		KX000000210		SADDLE TYPE TIE MOUNT				*		1	
40	R	SM4051001SC	SM4051001SN	SCREW M5 L=10				*		1	1.00
41		KX000000230		RELEASIBLE CABLE TIE				*		1	
42		40088035		POWER SUPPLY PLATE ASSY CE	FOR 1-PH- ASE 220~-- 240V CE P- FL, PECIFI- CATIONS WITH PED- AL, SEPAR- ATION SP- ECIFICATI- ONS PEDAL			*		1	
43		40089563		POWER SUPPLY PLATE ASSY LA	FOR 1-PH- ASE 100~-- 120V LA P- FL, SPECI- FICATIONS WITH PED- AL, SEPAR- ATION SP- ECIFICATI- ONS PEDAL			*		1	
44		40088316		RUBBER_CUSHION				*		2	
45		40093424		BOX BRACKET	SEPARATI- ON SPECI- FICATIONS PEDAL			*		1	



No.	Supply Code	Parts No.	Replacement	Parts name	Remarks	Choice	Step	Level	Cons	Qty	Rep. QTY
46		40087139		FLT-T PCB ASSY	FOR 3-PHASE 200~240V PFL, 1-PHASE 100~120V LA PFL, 3-PHASE 200~240V JA PFL, SPECIFICATIONS WITH PEDAL, SEPARATION SPECIFICATIONS PEDAL			*		1	
47		SL4041081SC		SCREW M4 L=10				*		2	
48		CM300100402		VOLTAGE DANGER LABEL(SMALL)	FOR 3-PHASE 200~240V PFL, 1-PHASE 100~120V LA PFL, 3-PHASE 200~240V JA PFL, SPECIFICATIONS WITH PEDAL, SEPARATION SPECIFICATIONS PEDAL			*		1	
49		KX000000280		BEAD BAND				*		2	
50		CM600100101		WEEE MARK LABEL S	FOR 1-PHASE 220~240V CE PFL, SPECIFICATIONS WITH PEDAL, SEPARATION SPECIFICATIONS PEDAL			*		1	
51		CM300100302		VOLTAGE DANGER LABEL(SMALL)	FOR 1-PHASE 220~240V CE PFL, SPECIFICATIONS WITH PEDAL, SEPARATION SPECIFICATIONS PEDAL			*		1	
52		CM300400602		VOLTAGE CAUTION LABEL L=25				*		1	
53		CM300100003		VOLTAGE WARNING LABEL(25)	FOR 1-PHASE 220~240V PFL, SPECIFICATIONS WITH PEDAL, SEPARATION SPECIFICATIONS PEDAL			*		1	
54		SL4031081SC		SCREW M3 L=10				*		2	
55		SL4040881SC		SCREW M4 L=8				*		3	
56		SL4030881SC		SCREW M3 L=8				*		1	



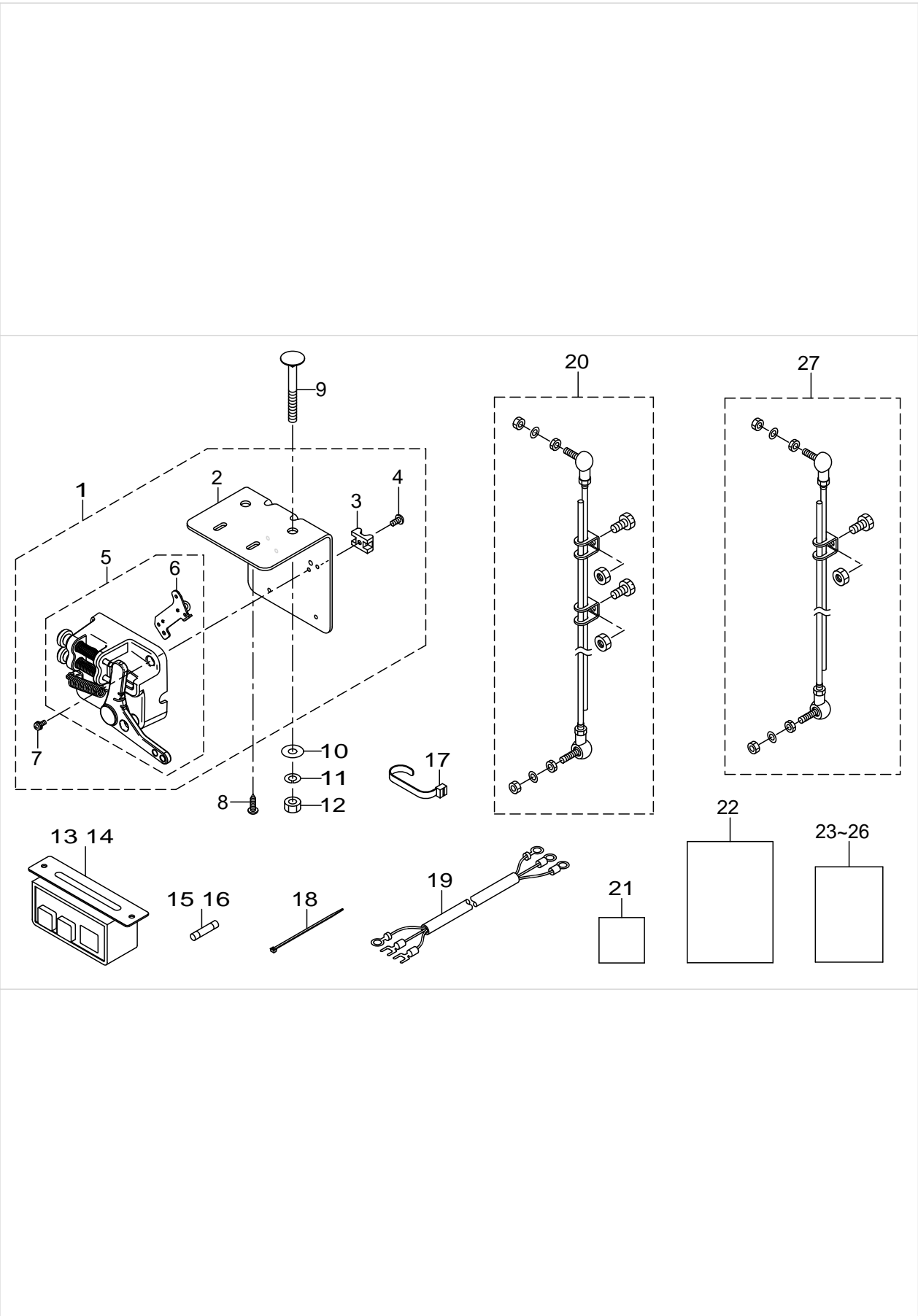
No.	Supply Code	Parts No.	Replacement	Parts name	Remarks	Choice	Step	Level	Cons	Qty	Rep. QTY
57		40087168		HOUSING_PLATE_A	FOR 1-PHASE 220~240V PFL, 3-PHASE 200~240V PFL, 3-PHASE 200~240V JA PFL, SPECIFICATIONS WITH PEDAL, SEPARATION SPECIFICATIONS PEDAL			*		1	
58		SL4030881SC		SCREW M3 L=8	FOR 1-PHASE 220~240V PFL, SPECIFICATIONS WITH PEDAL, SEPARATION SPECIFICATIONS PEDAL			*		1	
59	D	40087166		FRAME_B	FOR 1-PHASE 220~240V CE PFL, 3-PHASE 200~240V PFL, 1-PHASE 100~120V LA PFL, 3-PHASE 200~240V JA PFL, SPECIFICATIONS WITH PEDAL, SEPARATION SPECIFICATIONS PEDAL			*		1	
60	D	40087165		FRAME_A	FOR 1-PHASE 220~240V PFL, SPECIFICATIONS WITH PEDAL, SEPARATION SPECIFICATIONS PEDAL			*		1	
61		SL4041081SC		SCREW M4 L=10				*		10	
62		40103079		FLT-CE PCB ASSY	FOR 1-PHASE 220~240V CE PFL, PECIFICATIONS WITH PEDAL, SEPARATION SPECIFICATIONS PEDAL			*		1	
63		SL4041491SC		SCREW 4X14				*		3	
64		40099916		BOX_HANGER	ELECTRICAL EQUIPMENT IS HUNG AND THE TYPE					1	
65		SL4051091SC		SCREW M5X0.8 L=10	ELECTRICAL EQUIPMENT IS HUNG AND THE TYPE					4	



SC-921

No.	Supply Code	Parts No.	Replacement	Parts name	Remarks	Choice	Step	Level	Cons	Qty	Rep. QTY
66		40162970		CTL921 PCB ASSY CE	FOR 1-PHASE 220~240V CE PFL, PECIFICATIONS WITH PEDAL, SEPARATION SPECIFICATIONS PEDAL			*		1	

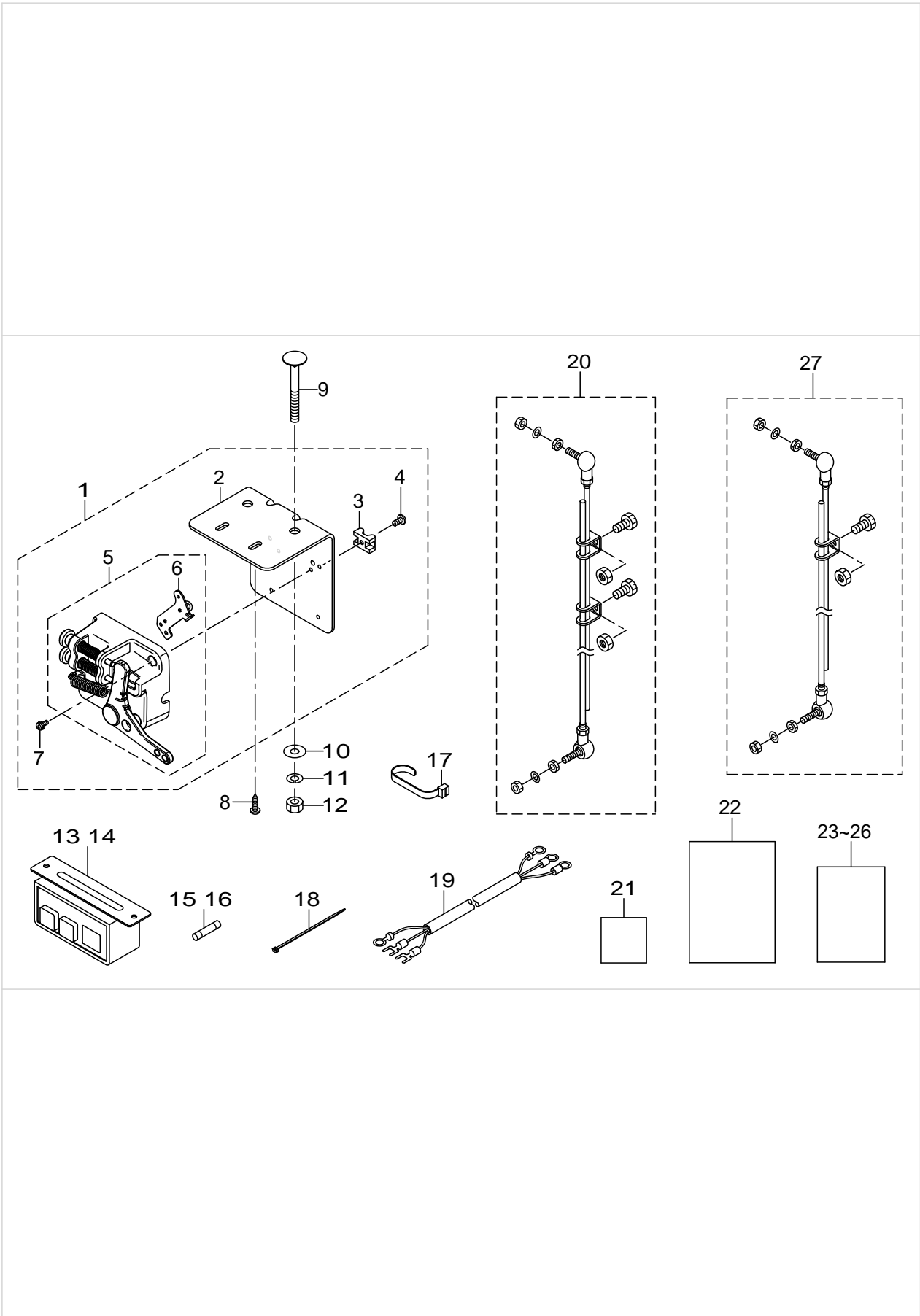
SC-921(Accessorie Parts)



SC-921(Accessorie Parts)

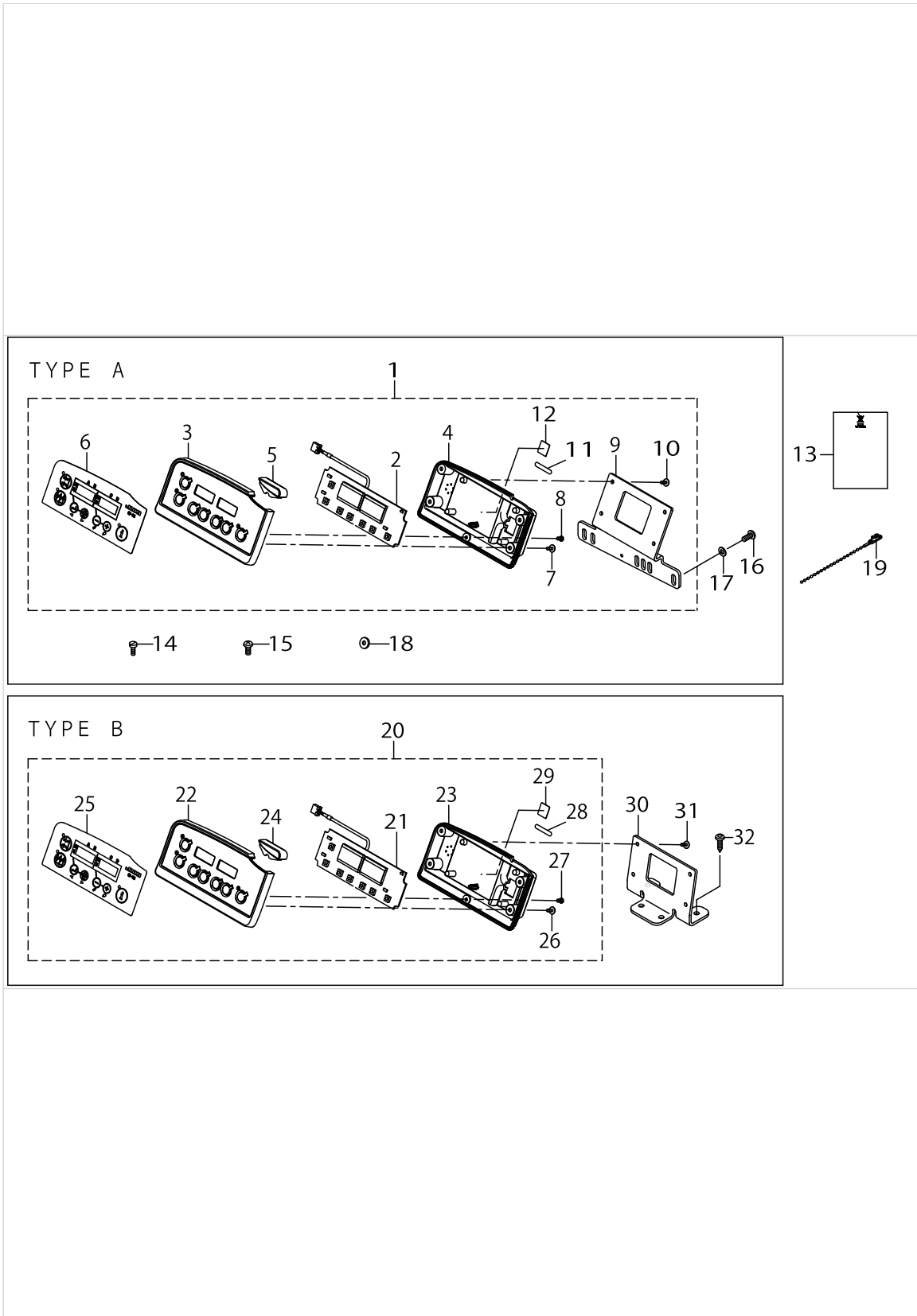
No.	Supply Code	Parts No.	Replacement	Parts name	Remarks	Choice	Step	Level	Cons	Qty	Rep. QTY
1		40095439		PEDAL SENSOR BASE ASSY ATT_INSIDE	SEPARATION SPECIFICATIONS PEDAL					1	
2	R	40093423	40099913	SENSOR BRACKET	SEPARATION SPECIFICATIONS PEDAL			*		1	1.00
3		KX000000210		SADDLE TYPE TIE MOUNT	SEPARATION SPECIFICATIONS PEDAL			*		1	
4	R	SM4051001SC	SM4051001SN	SCREW M5 L=10	SEPARATION SPECIFICATIONS PEDAL			*		1	1.00
5		40094259		PEDAL SENSOR ASM				*		1	
6		40087159		SENSOR COIL HOLD A ASSY				*		1	
7		SL4041091SC		SCREW M4 L=10	SEPARATION SPECIFICATIONS PEDAL			*		3	
8		40093427		WOOD_SCREW D=5.1 L=18						2	
9		40093426		MOTOR FITTING BOLT L=75	SEPARATION SPECIFICATIONS PEDAL					2	
10		WP0851846SC		WASHER 8.5X22.0X1.8						2	
11		WS0820002KR		SPRING WASHER M8						2	
12		NM6080002SC		NUT M8						2	
13		40049385		POWER SWITCH D ASM.	FOR 3-PHASE 200~240V JAPFL, SPECIFICATIONS WITH PEDAL, SEPARATION SPECIFICATIONS PEDAL, ELECTRICAL EQUIPMENT IS HUNG AND THE TYPE					1	
14		M6101471CA0		POWER SWITCH C ASM.	FOR 1-PHASE 220~240V PFL, SPECIFICATIONS WITH PEDAL, SEPARATION SPECIFICATIONS PEDAL, ELECTRICAL EQUIPMENT IS HUNG AND THE TYPE					1	
15		KF000000080		SLO-BLO FUSE						1	
16		KF000000030		SLO-BLO FUSE						1	
17		KX000000230		RELEASIBLE CABLE TIE	SEPARATION SPECIFICATIONS PEDAL					1	
18		EA9500B0100		CABLE BAND						1	

SC-921(Accessorie Parts)



SC-921(Accessorie Parts)

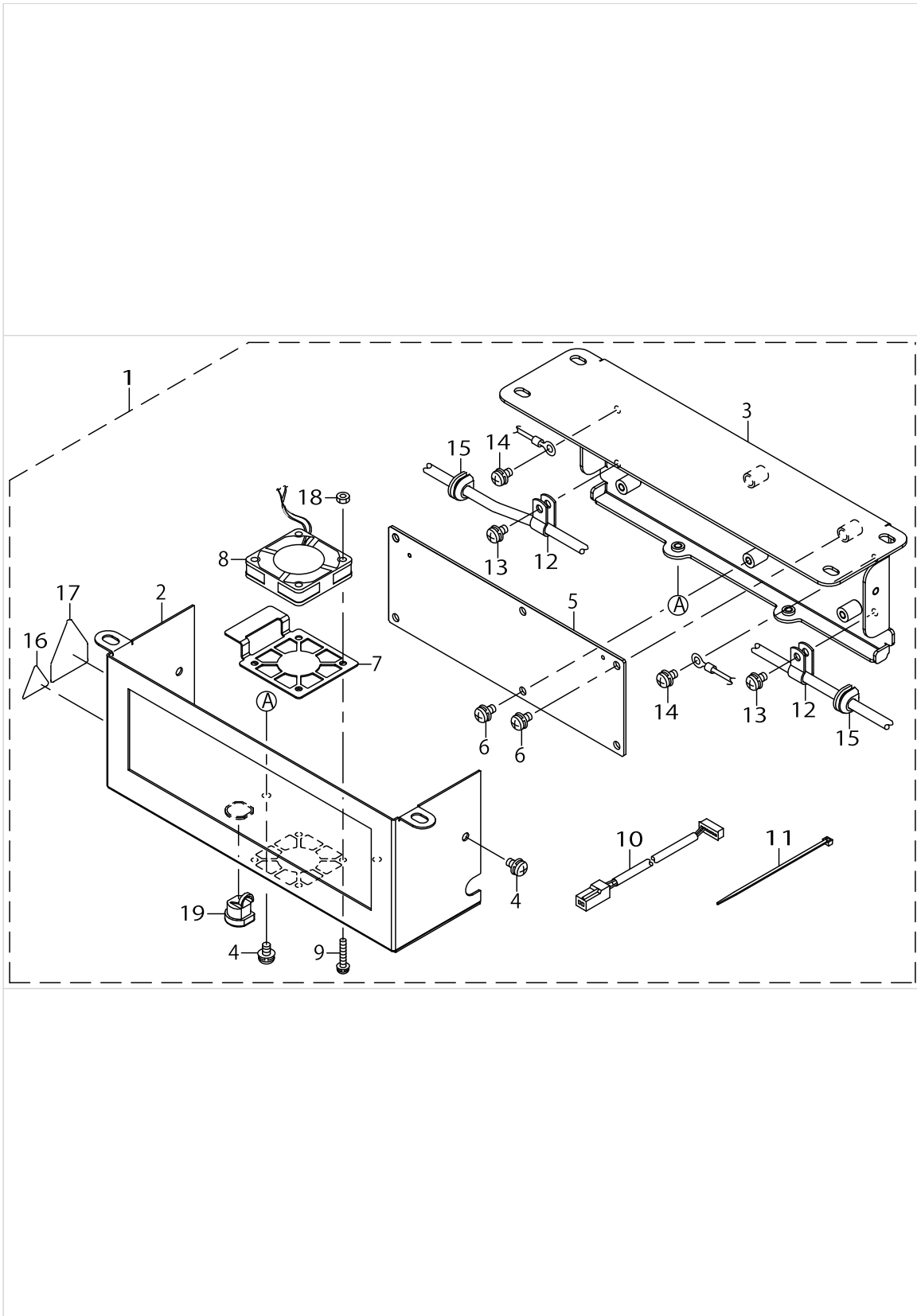
No.	Supply Code	Parts No.	Replacement	Parts name	Remarks	Choice	Step	Level	Cons	Qty	Rep. QTY
19		M6102461DAA		AC INPUT CABLE ASM.(GE)	FOR 1-PHASE 220~240V CE P-FL, SPECIFICATIONS WITH PEDAL, SEPARATION SPECIFICATIONS PEDAL, ELECTRICAL EQUIPMENT IS HUNG AND THE TYPE					1	
20		40088314		CONNECTING ROD ASSY	FOR 1-PHASE 220~240V CE P-FL, SPECIFICATIONS WITH PEDAL, SEPARATION SPECIFICATIONS PEDAL					1	
21		40095597		INSTRUCTION MANUAL CD 9 LANGUAGES	FOR 1-PHASE 220~240V CE P-FL, SPECIFICATIONS WITH PEDAL, SEPARATION SPECIFICATIONS PEDAL, ELECTRICAL EQUIPMENT IS HUNG AND THE TYPE					1	
22		CM600100201		WEEE INFORMATION SHEET	FOR 1-PHASE 220~240V CE P-FL, SPECIFICATIONS WITH PEDAL, SEPARATION SPECIFICATIONS PEDAL, ELECTRICAL EQUIPMENT IS HUNG AND THE TYPE					1	
23		40090760		SAFETY INSTRUCTION MANUAL						1	
24		29275005		MANUFACTURERS DECLARATION						1	
25		40095596		INSTRUCTION MANUAL 4 LANGUAGES						1	
26		40105997		SETUP MANUAL 9L	FOR ELECTRICAL EQUIPMENT IS HUNG AND THE TYPE					1	
27		M4501471AA0		CONNECTING ROD A ASM.	FOR ELECTRICAL EQUIPMENT IS HUNG AND THE TYPE					1	



CP-18

No.	Supply Code	Parts No.	Replacement	Parts name	Remarks	Choice	Step	Level	Cons	Qty	Rep. QTY
1		40088334		CP-18 TYPE A						1	
2		40088126		CP PCB ASSY				*		1	
3		40088347		FRONT_CASE				*		1	
4		40088348		REAR_CASE				*		1	
5		40088349		INDICATOR				*		1	
6		40088351		PANEL SHEET				*		1	
7	D	SV4030802SN		TAPPING SCREW W- ITH FLANGE M3X8				*		4	
8	D	ST4030651SN		SCREW M3X6				*		1	
9		40088350		PANEL BRACKET_A				*		1	
10	D	SV4030802SN		TAPPING SCREW W- ITH FLANGE M3X8				*		4	
11		40044616		TYPE LABEL A				*		1	
12		CM600100101		WEEE MARK LABEL S				*		1	
13		CM600100201		WEEE INFORMATION SHEET						1	
14		SS6111210SP		SCREW11/64-40L=12						2	
15		SS4121215SP		SCREW 3/16-28 L=12						2	
16		SM4051255SP		SCREW M5 L=12						2	
17		WP0501016SD		WASHER 5X10.5X1						4	
18		B1144771000		FRAME SIDE COVER GASKET (C)						4	
19		KX000000280		BEAD BAND						1	
20		40092983		CP-18 TYPE B						1	
21		40088126		CP PCB ASSY				*		1	
22		40088347		FRONT_CASE				*		1	
23		40088348		REAR_CASE				*		1	
24		40088349		INDICATOR				*		1	
25		40088351		PANEL SHEET				*		1	
26	D	SV4030802SN		TAPPING SCREW W- ITH FLANGE M3X8				*		4	
27	D	ST4030651SN		SCREW M3X6				*		1	
28		40044617		TYPE LABEL B				*		1	
29		CM600100101		WEEE MARK LABEL S				*		1	
30		40088355		PANEL BRACKET B						1	
31	D	SV4030802SN		TAPPING SCREW W- ITH FLANGE M3X8						4	
32		40093427		WOOD_SCREW D=5.1 L=18						2	

REACTOR BOX 2P (FOR CE)



REACTOR BOX 2P (FOR CE)

No.	Supply Code	Parts No.	Replacement	Parts name	Remarks	Choice	Step	Level	Cons	Qty	Rep. QTY
1		40161415		REACTOR BOX ASSY 2P						1	
2		40163866		REACTOR_BOX_COVER_B_ASSY				*		1	
3		40161414		REACTOR BOX BASE				*		1	
4		SL4040881SC		SCREW M4 L=8				*		4	
5		40161422		REACTOR PCB ASSY 2P				*		1	
6		SL4040881SC		SCREW M4 L=8				*		6	
7		40163611		FAN_PLATE_ASM				*		1	
8		70005071		HOOK FAN MOTOR ASSY				*		1	
9		SL4031891SC		SCREW M3 L=18				*		4	
10		40163807		FAN RELAY CORD ASM				*		1	
11		EA9500B0100		CABLE BAND				*		1	
12		HX00150000B		CABLE CLAMP				*		2	
13		SL4040881SC		SCREW M4 L=8				*		2	
14		SL4040881SC		SCREW M4 L=8				*		2	
15		M1013110000		CORD BUSH A				*		2	
16		CM300100003		VOLTAGE WARNING LABEL (25)				*		1	
17		CM300400602		VOLTAGE CAUTION LABEL L=25				*		1	
18		NM6030001SC		NUT M3X0.5 TYPE1				*		4	
19		HX006820000		CORD BUSHING				*		1	

NUMERICAL INDEX OF PARTS

PART NO	PAGE	REF NO.	PART NO	PAGE	REF NO.	PART NO	PAGE	REF NO.
29275005	16	23~26	40094259	4	20	KX000000230	6	41
40006202	6	25	40094259	14	5	KX000000230	14	17
40006207	6	26	40094260	4	21	KX000000280	8	49
40006208	6	27	40095143	2	9·66	KX000000280	18	19
40006212	6	29	40095152	2	1~8	M1013110000	20	15
40042130	4	22	40095153	2	1~8	M4501471AA0	16	27
40042133	6	24	40095154	2	1~8	M6101471CA0	14	13·14
40044616	18	11	40095155	2	1~8	M6102461DAA	16	19
40044617	18	28	40095439	14	1	M8002430000	6	38
40049385	14	13·14	40095596	16	23~26	NM6030001SC	20	18
40049426	6	28	40095597	16	21	NM6080002SC	14	12
40087129	4	11~13	40099916	10	64	SL4030881SC	8	58
40087139	8	46·62	40100919	2	1~8	SL4030881SC	10	58
40087147	4	11~13	40100920	2	1~8	SL4031081SC	8	54
40087153	4	16	40100921	2	1~8	SL4031891SC	20	9
40087154	4	17	40100922	2	1~8	SL4040681SC	6	34
40087156	4	23	40103079	10	46·62	SL4040881SC	8	55
40087157	6	36	40105997	16	23~26	SL4040881SC	20	14
40087159	14	6	40161414	20	3	SL4041081SC	2	61
40087165	10	59·60	40161415	20	1	SL4041081SC	4	61
40087166	10	59·60	40161422	20	5	SL4041081SC	8	61
40087167	6	35	40162970	12	9·66	SL4041081SC	10	61
40087168	10	57	40163611	20	7	SL4041091SC	4	18
40088035	6	42	40163807	20	10	SL4041091SC	14	7
40088126	18	21	40163866	20	2	SL4041491SC	10	63
40088311	4	14	70005071	20	8	SL4041681SC	6	37
40088314	16	20	B1144771000	18	18	SL4051091SC	10	65
40088315	6	32	CM300100003	8	53	SL6041292TN	6	33
40088316	6	44	CM300100003	20	16	SM4051001SC	6	40
40088334	18	1	CM300100302	8	51	SM4051001SC	14	4
40088347	18	22	CM300100402	8	48	SM4051255SP	18	16
40088348	18	23	CM300400602	8	52	SM8040612TP	6	30
40088349	18	24	CM300400602	20	17	SS4121215SP	18	15
40088350	18	9	CM600100101	8	50	SS6111210SP	18	14
40088351	18	25	CM600100101	18	29	ST4030651SN	18	27
40088355	18	30	CM600100201	16	22	ST9053511SR	4	19
40089241	2	11~13	CM600100201	18	13	SV4030601SR	6	31
40089563	6	43	EA9500B0100	14	18	SV4030802SN	18	31
40090760	16	23~26	EA9500B0100	20	11	WP0501016SD	18	17
40092983	18	20	HX00150000B	20	12	WP0851846SC	14	10
40093423	14	2	HX006820000	20	19	WS0820002KR	14	11
40093424	6	45	KF000000030	14	15·16			
40093426	14	9	KF000000080	14	15·16			
40093427	14	8	KX000000210	6	39			
40093427	18	32	KX000000210	14	3			