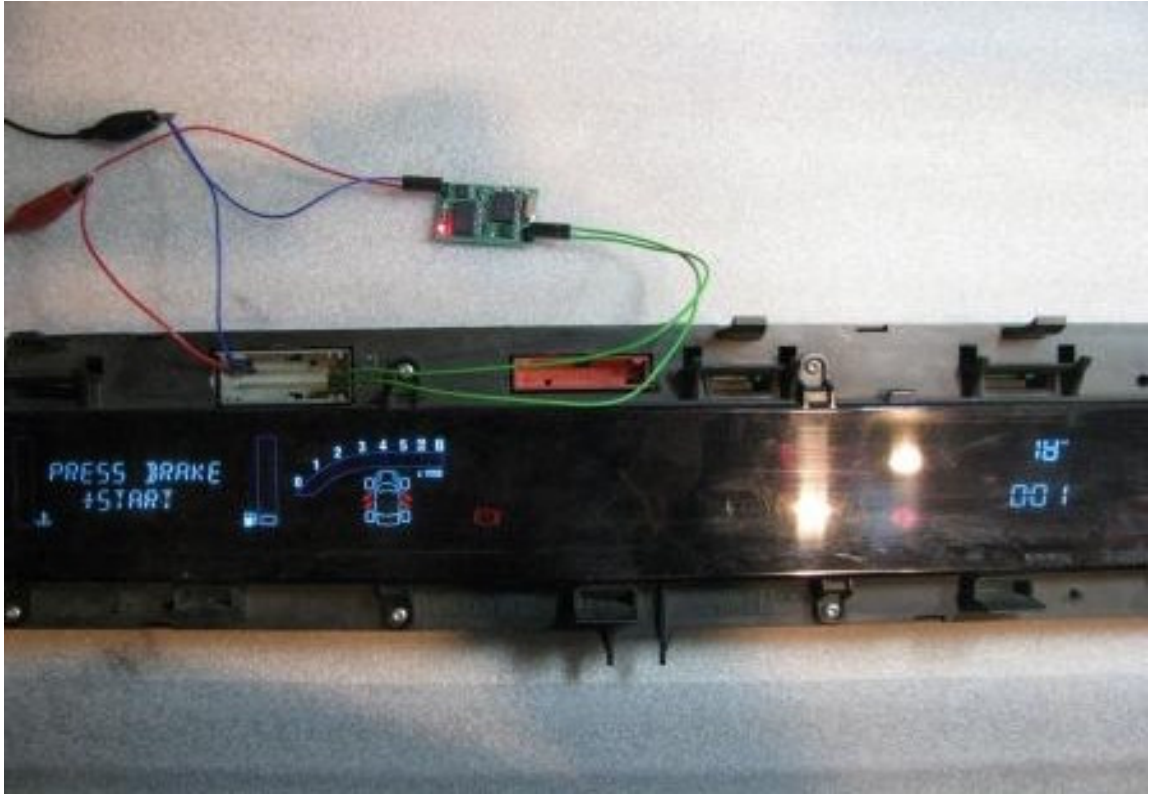
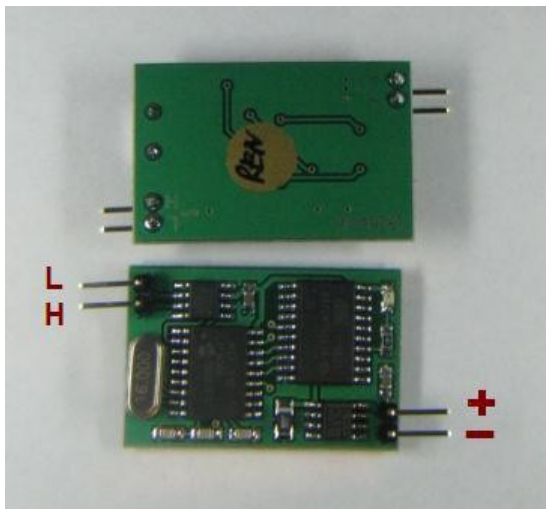


Renault CAN bus emulator

For instrument cluster repair



Simple connection – 4 wires only: **CAN Low, CAN High, +12v, GND.** After power on emulator turns on dashboard. If everything is connected correctly and there are no CAN faults **RED LED** on emulator board is blinking.



DASHBOARD CONNECTOR:

Renault Scenic, Laguna

1	+12v
2	GND
29	CAN Low
30	CAN High

Renault Megane

1	CAN High
4	CAN Low
15	+12v
30	GND