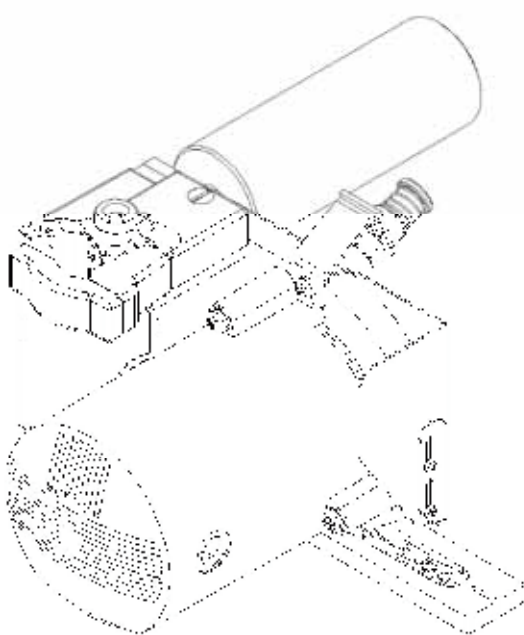
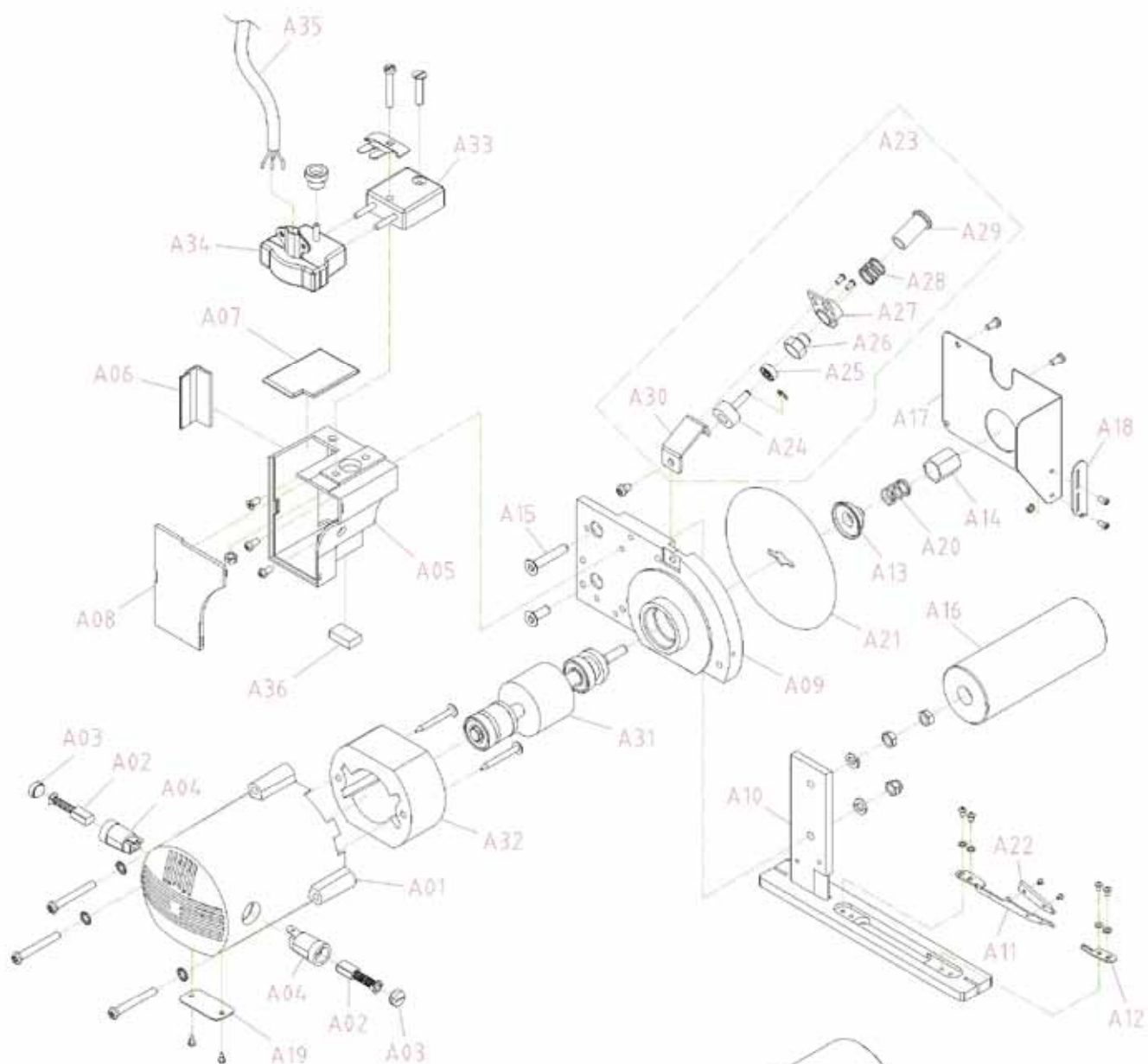


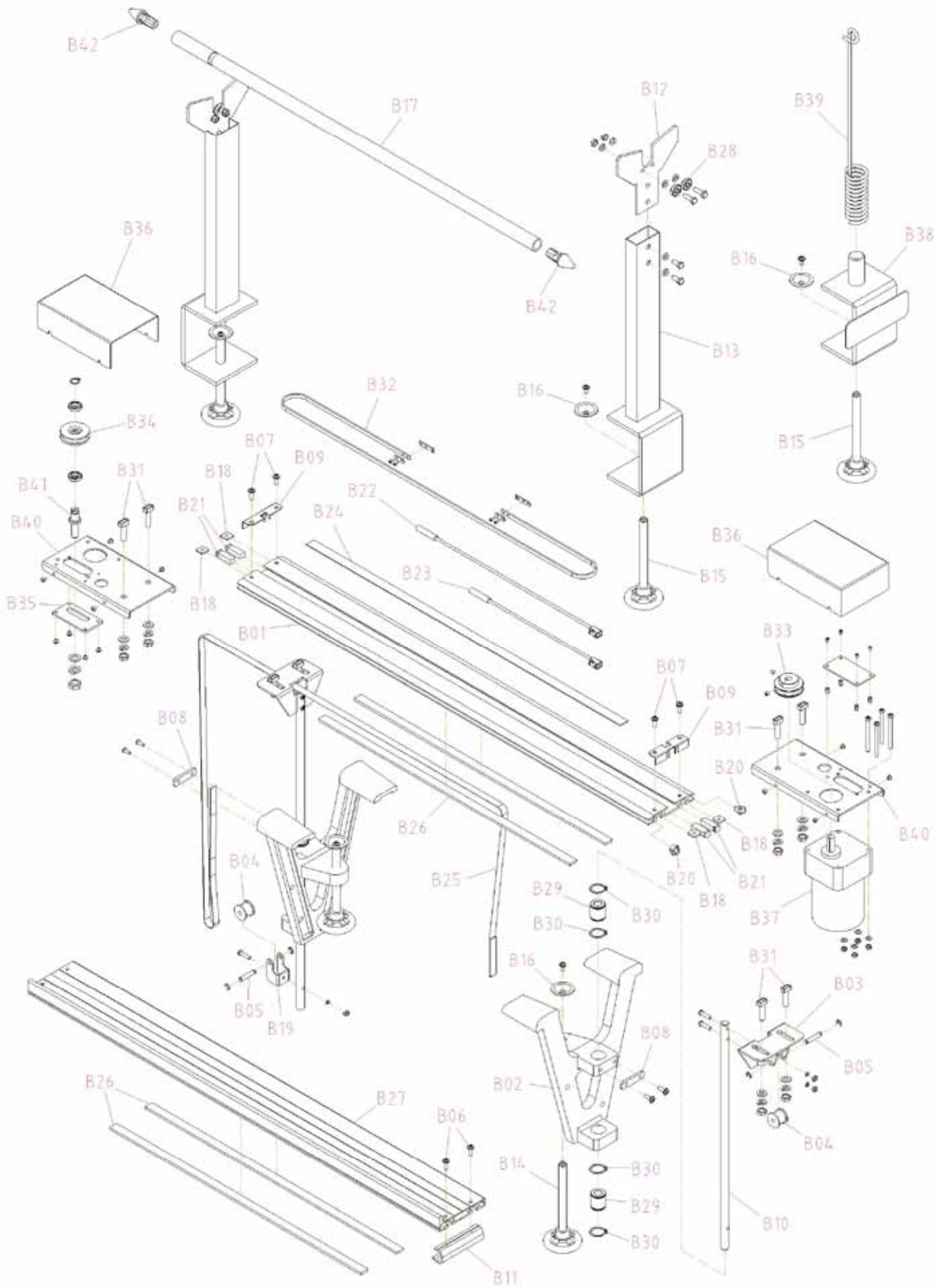
使用說明書與零件圖
INSTRUCTION AND PARTS LIST





PARTS DIAGRAMS / 零件圖 A

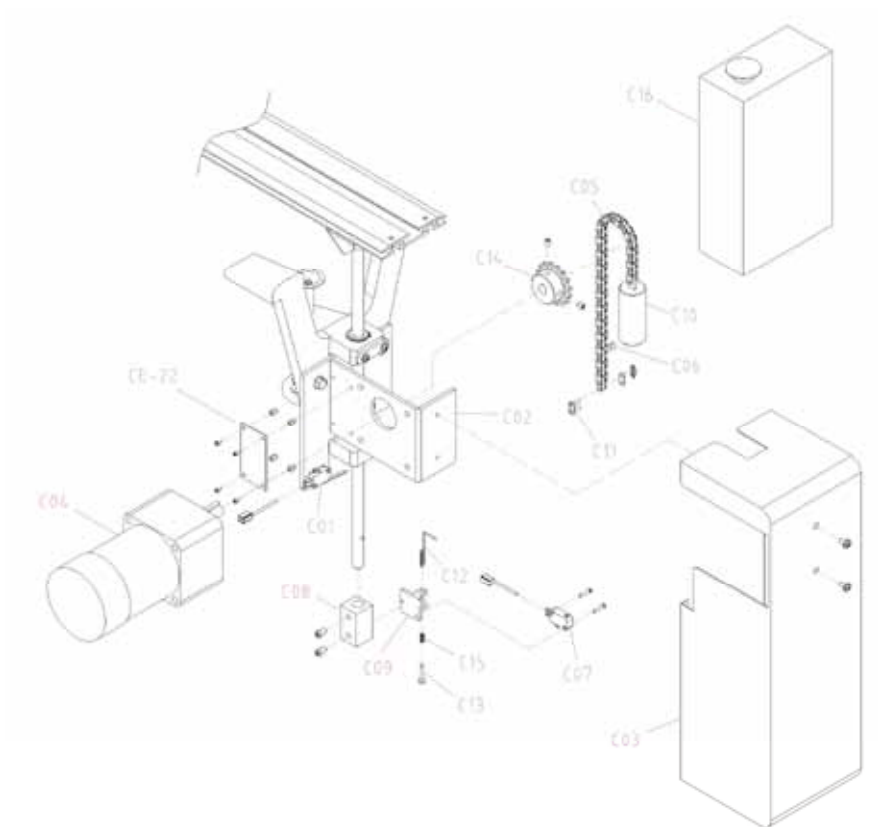
| 序號 | PART No. | 名稱 | NAME |
|-----|------------|----------|-------------------------|
| A01 | CA-01(W)S | 馬達塑殼(W) | MOTOR COVER(WHITE) |
| A02 | CA-01A | 碳刷 | CARBON BRUSH |
| A03 | CA-01B | 碳刷蓋 | CARBON BRUSH COVER |
| A04 | CA-01C | 碳刷座 | CARBON BRUSH HOLDER |
| A05 | CA-02 | 電器盒 | TERMINAL BOX |
| A06 | CA-02-01 | 把手封片 | COVER FOR HANDLE |
| A07 | CA-02-02 | 計數器孔封片 | COVER FOR COUNTER |
| A08 | CA-03 | 電器蓋 | COVER FOR TERMINAL BOX |
| A09 | CA-05 | 刀座 | MOTOR PLATE |
| A10 | CA-06A-1 | 刀柱(手動用) | MOTOR STAND |
| A11 | CA-07A | 彈性底刀座 | LOWER BLADE ARM |
| A12 | CA-07B | 彈性底刀座調整板 | LOWER BLADE ARM ADJ |
| A13 | CA-09 | 刀模 | COLLAR FOR KNIFE |
| A14 | CA-10 | 六角栓 | LOCK NUT FOR KNIFE |
| A15 | CA-11A | 配重螺絲 | SCREW FOR BLANCE IRON |
| A16 | CA-11S (O) | 配重(O) | BLANCE IRON(ORANGE) |
| A17 | CA-12 | 保護蓋 | KNIFE COVER |
| A18 | CA-13 | 保護片 | KNIFE GUARD |
| A19 | CA-14 | 馬達外片 | MOTOR COVER PIECE |
| A20 | CA-15 | 彈簧 | SPRING FOR COLLAR |
| A21 | CA-16 | 圓刀 | MOVING WHEEL |
| A22 | CA-17 | 底刀 | LOWER BLADE |
| A23 | CD | 磨刀石組 | GRINDER ASSEMBLY |
| A24 | CD-01 | 磨刀石 | GRINDER STONE |
| A25 | CD-02 | 軸承 | BEARING |
| A26 | CD-03 | 軸承銅座 | BRAZE SET FOR BEARING |
| A27 | CD-04S | 磨刀石支撐片 | PLATE FOR GRINDER STONE |
| A28 | CD-05 | 彈簧 | SPRING |
| A29 | CD-06S | 按鈕套筒 | PUSH BUSH |
| A30 | CD-07S | 磨刀石組支撐片 | GRINDER SUPPORT |
| A31 | CE-01 | 馬達軸心 | MOTOR AXIS |
| A32 | CE-01C | 馬達線圈 | MOTOR COIL |
| A33 | CE-03 | 插頭 | CABLE PLUG |
| A34 | CE-04 | 插座 | SCOKET |
| A35 | CE-04A | 插頭電線 | CABLE |
| A36 | CE-08 | 磁鐵 | MAGNAT |



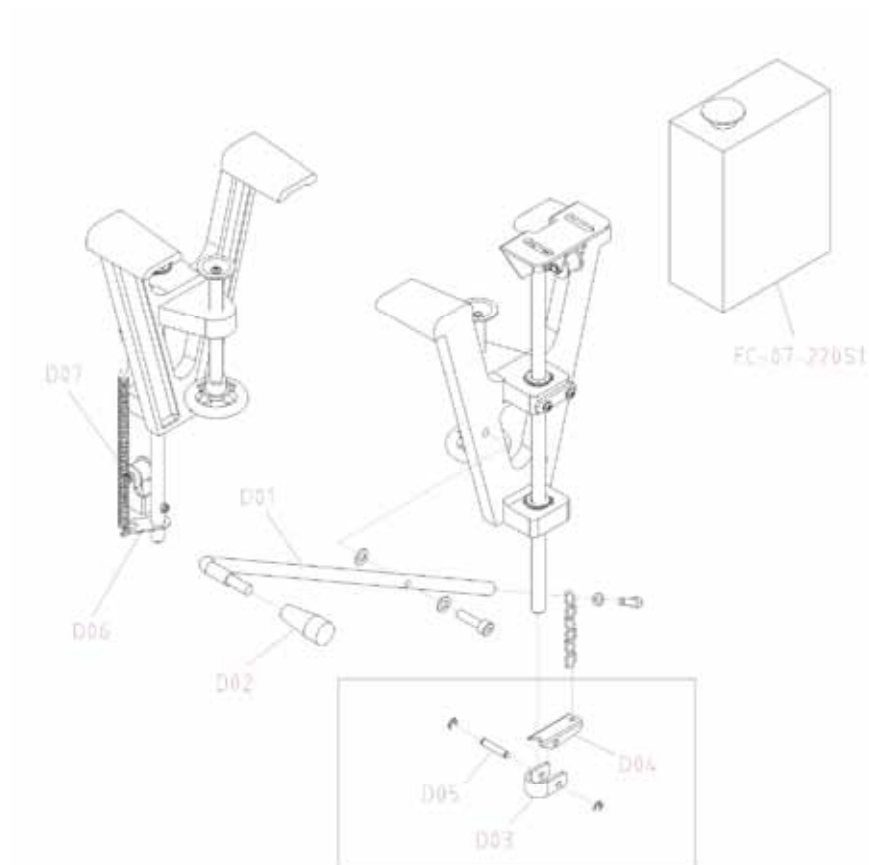
PARTS DIAGRAMS / 零件圖 B

| 序號 | PART No. | 名稱 | NAME |
|-----|----------|------------|--------------------------------------|
| B01 | CB-01 | 鋁軌 | RAIL |
| B02 | CB-02S | 昇降座 | CLAMP |
| B03 | CB-03 | 提升座 | BAR LIFTER ELBOW |
| B04 | CB-05 | 塑輪 | PLASTIC ROLLER |
| B05 | CB-06 | 塑輪軸 | ROLLER SHAFT |
| B06 | CB-07 | 固定螺絲(壓軌用) | SCREW FOR RAIL |
| B07 | CB-07A | 固定螺絲(鋁軌用) | SCREW FOR LOFT HANDLE |
| B08 | CB-08 | 長形固定片 | BELT CONNECTOR FOR BAR LIFTER |
| B09 | CB-09 | 頭尾片 | RAIL GUARD |
| B10 | CB-10 | 昇降桿 | BAR LIFTER STAND |
| B11 | CB-11 | 提把(鋁) | LIFT HANDLE (ALUMINUM) |
| B12 | CB-12 | 撐布架片 | FABRIC ROLL HOLDER |
| B13 | CB-13 | 撐布架柱 | STAND FOR FABRIC ROLL |
| B14 | CB-14 | 昇降鋁把手 | SCREW DRIVE FOR CLAMP |
| B15 | CB-15 | 撐布架鋁把手 | SCREW DRIVE FOR FABRIC ROLL STAND |
| B16 | CB-16 | 頂片 | NUT FOR CLAMPING SCREW |
| B17 | CB-23 | 撐布棍 | FABRIC ROLL HOLDING ROLLER |
| B18 | CB-18 | 方形固定片 | SQUARE SEAT |
| B19 | CB-19 | 輪座 | ROLLER SEAT |
| B20 | CB-20 | 橡膠塞 | RUBBER |
| B21 | CB-21 | 防撞橡膠 | IMPACT-RESISTANT RUBBER |
| B22 | EC-16A | 磁簧管(F) | LONG POSITION SENSOR |
| B23 | EC-16B | 磁簧管(B) | SHORT POSITION SENSOR |
| B24 | CB-24 | 鋁軌鋼片 | STEEL PIECE |
| B25 | CB-25 | 提昇帶 | BELT FOR BAR LIFTER |
| B26 | CB-26 | EVA 發泡貼布 | RAIL RUBBER TAPE |
| B27 | CB-27 | 壓軌 | CLOTH PRESS TRACK |
| B28 | CB-28 | 撐布架片軸承 626 | BEARING FOR FABRIC ROLL HOLDER |
| B29 | CB-29 | 襯套軸承 LM-13 | BUSH BERING LM-13 |
| B30 | CB-30 | C 型扣環 | BUSH CLIP |
| B31 | CB-31 | 提昇座固定螺絲 | BOLT FOR BAR LIFTER ELBOW |
| B32 | CB-32 | 皮帶 | BELT |
| B33 | CB-33 | 驅動皮帶輪 | MAIN BELT WHEEL |
| B34 | CB-34 | 皮帶調整輪 | BELT WHEEL |
| B35 | CB-35 | 皮帶輪調整座 | BELT ADJUST PLATE |
| B36 | CB-36 | 風蓋 | COVER |
| B37 | CB-37B-N | 皮帶馬達(220V) | BELT MOTOR |
| B38 | CB-38A | 拉線彈簧座 | CABLE SUPPORT |
| B39 | CB-38B | 拉線彈簧 | SPRING |
| B40 | CB-39 | 行走馬達座 | PLATE |
| B41 | CB-40 | 皮帶調整螺絲 | BOLT FOR BELT ADJUSTING |
| B42 | CB-42 | 撐布棍膠頭 | HOLDING ROLLER PLASTIC ARROW |

CS-600A



CS-600S



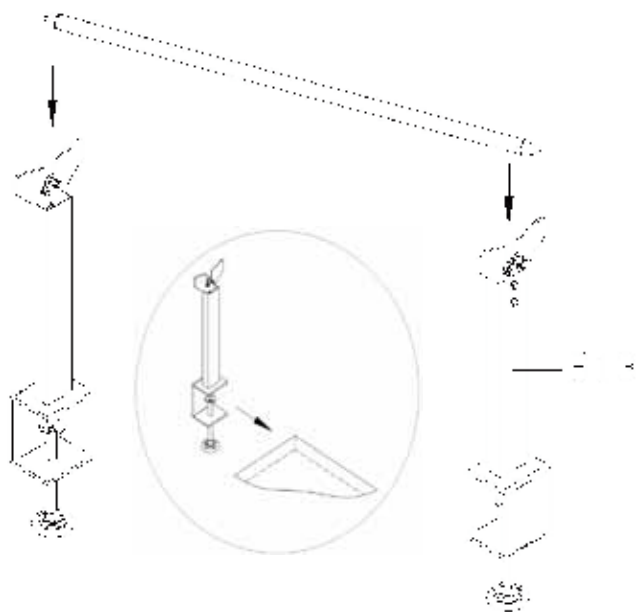
CS-600A PARTS DIAGRAMS / 零件圖 C

| 序號 | PART No. | 名稱 | NAME |
|-----|--------------|-----------|----------------------|
| C01 | EC-01A | 開關 A | LIMIT SWITCH |
| C02 | EC-02A | 昇降馬達座 | UP & DOWN MOTOR SEAT |
| C03 | EC-03A | 昇降蓋 | COVER |
| C04 | EC-04B-N | 昇降馬達 220V | UP & DOWN MOTOR |
| C05 | EC-05A | 昇降鏈條 | CHAIN |
| C06 | EC-05A-1 | 昇降鏈條 L 附件 | CHAIN L TYPE PART |
| C07 | EC-06A | 開關 B | LIMIT SWITCH |
| C08 | EC-07A | 固定塊 | BLOCK SEAT |
| C09 | EC-08A | 開關座 | LIMIT SWITCH SEAT |
| C10 | EC-09A | 上升配重 | UP IRON |
| C11 | EC-10A | 鏈條叉銷 | CHAIN PIN |
| C12 | EC-11A | 彈簧 | SPRING |
| C13 | EC-12A | 拉銷 | DRAWN PIN |
| C14 | EC-13A | 鏈輪 | CHAIN WHEEL |
| C15 | EC-14A | 壓縮彈簧 | COMPRESSED SPRING |
| C16 | EC-07A-220A1 | 全自動控制箱 | AUTO CONTROL BOX |
| C17 | CE-22 | 電子板 | PCB |

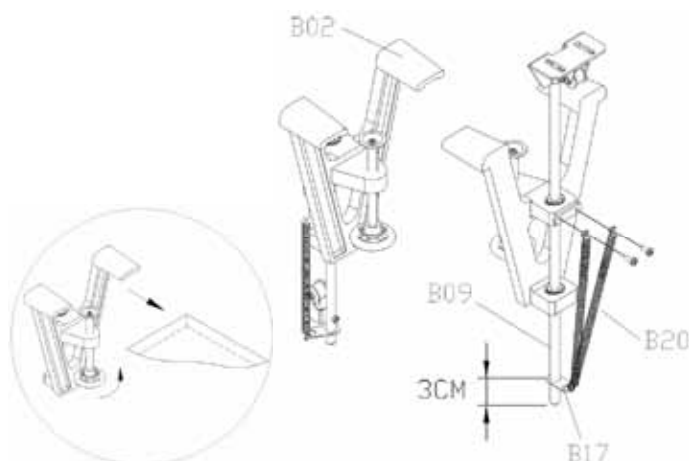
CS-600S PARTS DIAGRAMS / 零件圖 D

| 序號 | PART No. | 名稱 | NAME |
|-----|-------------|--------|-----------------------|
| D01 | CB-41 | 提昇拉桿 | LIFT BAR |
| D02 | CB-41-1 | 拉柄紅塑膠頭 | RED PLASTIC HAND |
| D03 | CB-41A-1A | U 型軸夾 | LIFT BAR HOOK |
| D04 | CB-41A-2A | 活動頂板 | LIFT BAR |
| D05 | CB-06 | 塑輪軸 | ROLLER SHAFT |
| D06 | CB-17 | 彈簧鈎片 | SPRING CONNECTOR |
| D07 | CB-22A | 彈簧 | SPRING |
| D08 | EC-07-220S1 | 半自動控制箱 | SEMI AUTO CONTROL BOX |

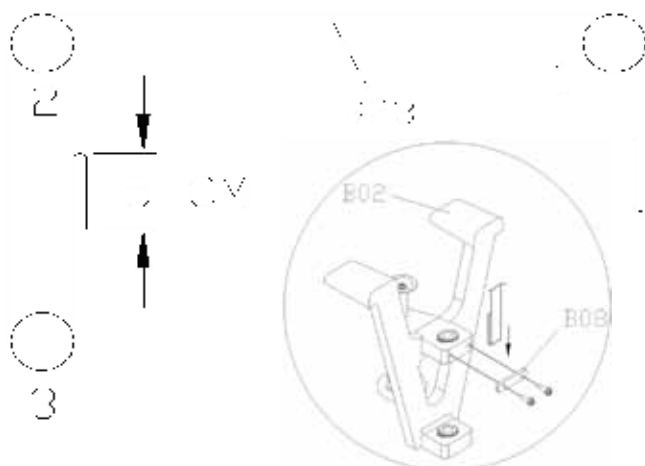
組裝程序說明 PROCEDURES OF INSTALLATION



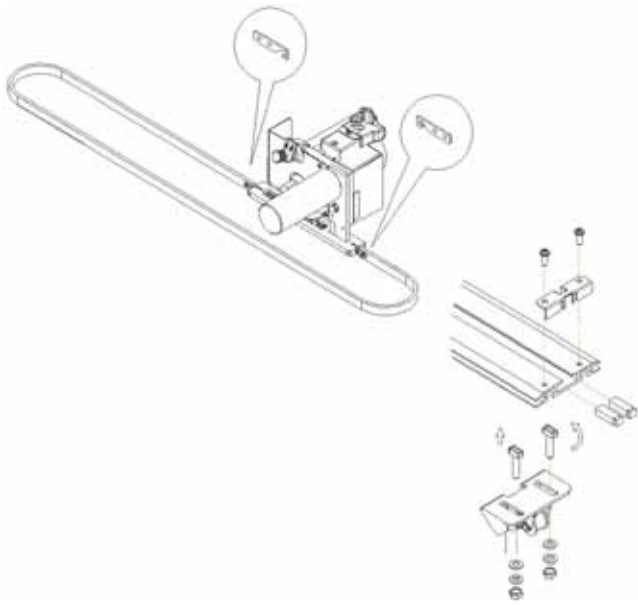
1. 固定撐布架柱(B13)
 - (1) 裝入工作桌尾端兩側，並鎖緊。
 - (2) 放入撐布棍於撐布柱上。
1. SET THE STANDS FOR THE FABRIC ROLL (B13).
 - (1) FIX THE STANDS ON BOTH SIDES OF TABLE AND TIE UP THE DRIVE.
 - (2) LIE DOWN THE FABRIC ROLL ON FABRIC ROLL STANDS.



2. 固定昇降座(B02)
 - (1) 取出 2 支倒 A 型昇降座(B02)，裝入工作桌並鎖緊。
- CS-600S 半自動
 - (2) 雙彈簧(B20)裝於切斷機側，也是操作者側。
 - (3) 彈簧尾端鈎片(B17)扣在昇降桿(B09)離尾端 3cm 處。
2. FIX CLAMP(B20)
 - (1) FIX TWO CLAMPS ON BOTH SIDES OF TABLE AND TIE UP THE DRIVE.
- CS-600S
 - (2) FIX THE TWIN SPRING ON THE CLAMP OF OPERATED SIDE (SINGLE SPRING ON ANOTHER CLAMP).
 - (3) PUT THE SPRING CONNECTOR (B17) ON THE BAR LIFTER STAND (B09) AND KEEP 3cm DISTANCE.



3. 裝提昇帶(B23)
 - (1) 取出綠色塑膠提昇帶(B23)，一頭固定在昇降座(B02)之長型固定片(B08)中，頭尾折疊 5cm。
 - (2) 另一頭穿過塑膠輪 1、2、3，不要鎖緊。
3. SET UP BELT FOR BAR LIFTER(B23)
 - (1) FIND THE GREEN PLASTIC BELT AND FIX ONE SIDE INTO THE BELT CONNECTOR (B08) OF CLAMP.
 - (2) PULL ANOTHER SIDE OF BELT TO CROSS PLASTIC ROLLER 1, 2, 3, AND DO NOT TIE UP (STANDBY).

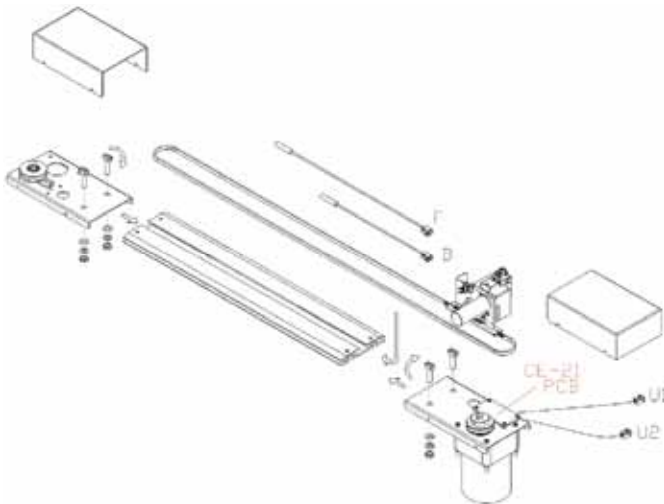


4. 安裝鋁軌及切斷機

- (1) 鋁軌置於昇降座上，由下方以螺絲伸入鋁軌溝槽旋轉 90 度後再鎖緊螺帽。
- (2) 拆除頭尾片及防撞橡皮，裝入切刀機後再鎖回。
- (3) 皮帶掛住切刀機兩側，皮帶鉤缺口朝下鉤住切刀機。

4. SET THE RAIL AND THE CUTTER

- (1) PUT THE RAIL ON THE CLAMP AND PUT THE SCREWS INTO THE GROOVE OF THE RAIL AND TURN A RIGHT ANGLE THEN FASTEN BY THE NUT TAKE OF THE RAIL GUARD AND THE IMPACT-RESISTANT RUBBERS, THEN PUT ON THE CUTTER AND RESET THE RUBBERS AND THE RAIL GUARD.
- (2) BELT HOOKS ON THE BOTH SIDES OF THE BELT HOOK. THE DOWNWARD GAP OF THE BELT HOOK HOOKS THE KNIFE.

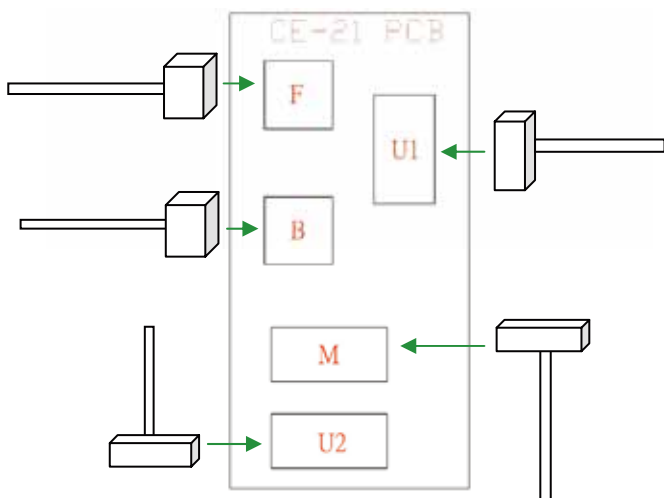


5. 安裝行走馬達座及皮帶調整座

- (1) 將行走馬達座及皮帶調整座裝於鋁軌頭尾處，用螺絲鎖緊。
- (2) 套上皮帶，調整皮帶調整輪至鬆緊適當位置，再將風蓋鎖上。
- (3) 行走馬達座上方有一個電路板，按其標示線號連接。

5. SET THE PLATE AND THE BELT ADJUSTER

- (1) PUT THE PLATE AND THE BELT ADJUSTER IN THE RAIL AND FASTEN WITH SCREWS.
- (2) PUT ON THE BELT AND ADJUSTING BELT WHEEL TO THE APPROPRIATE TENSION AND PUT ON THE COVER.



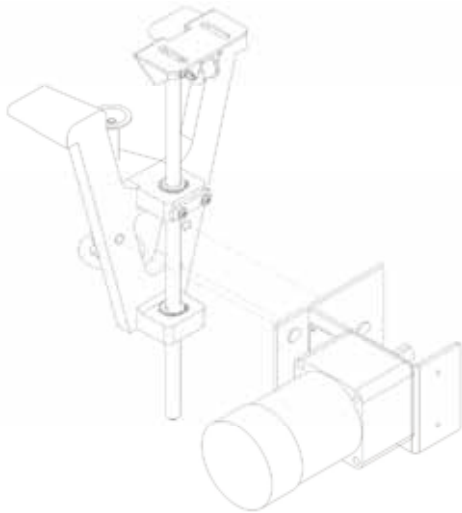
6. 電路板的裝配

- F：磁簧開關前進-2P。
- B：磁簧開關後退-2P。
- U1：進後退信號線-4P。
- U2：行走馬達連接線-3P。
- M：馬達接線。

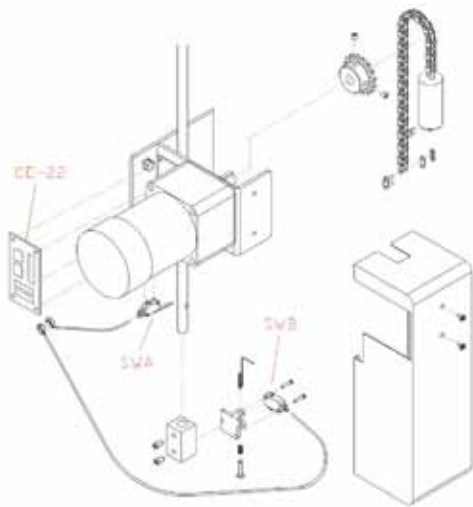
6. THE SYMBOLS ON THE P.B.C.

- F：POSITION SENSOR FOR FORWARD-2P.
- B：POSITION SENSOR FOR BACKWARD-2P.
- U1：FORWARD AND BACKWARD SIGNAL-4P.
- U2：BELT MOTOR CONNECTOR-3P.
- M：BELT MOTOR CABLE-3P.

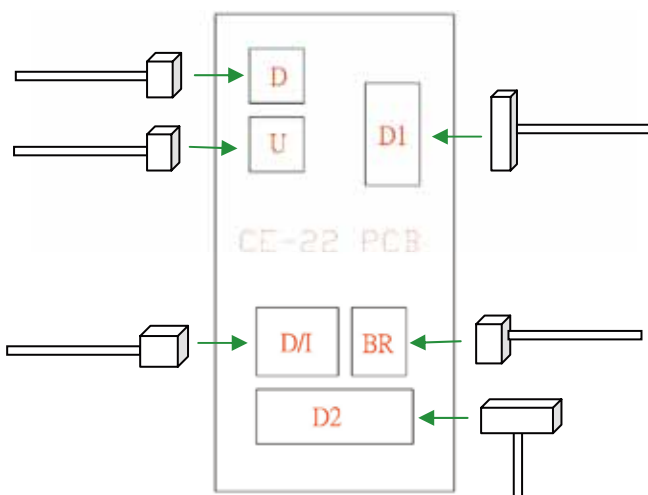
CS-600A 全自動昇降系統 AUTOMATIC UP & DOWN SYSTEM



1. 裝昇降馬達座整組
 - (1) 裝昇降馬達座整組於提昇座上，左側有一電路板，請按其線號連接。
 - (2) 電線插入下座電路板之馬達接點 M。
1. SET THE WHOLE SET OF UP & DOWN MOTOR SEAT
 - (1) PUT THE MOTOR SEAT ON THE CLAMP.
 - (2) CONNECT ALL THE CABLES WITH P.C.B. IN THE SAME SYMBOLS AND THE MOTOR POINT M.



2. 鏈條安裝
 - (1) 鎖上固定塊，將鏈條披覆在鏈輪上。
 - (2) 開關 A 及開關 B 插入下座電路板並按標示連接。
2. CHAIN INSTALLING
 - (1) SCREW THE BLOCK SEAT THEN PUT THE CHIAN ON THE CHIAN WHEEL.
 - (2) LIMT SWITCH AND LIMT SWITCH CONNECT WITH THE P.C.B. IN THE SAME SYMBOLS.



3. 電路板之裝配
 - U：上升開關-2P
 - D：下降開關-2P
 - D1：上升下降信號線-4P
 - D2：昇降馬達控制線-5P
 - M：昇降馬達連接線-5P
3. THE SYMBOLS ON THE P.C.B.
 - U：UP SWITCH-2P
 - D：DOWN SWITCH-2P
 - D1：UP & DOWN SIGNAL-4P
 - D2：UP & DOWN MOTOR CONNECTOR-5P
 - M：UP & DOWN MOTOR CABLE-5P

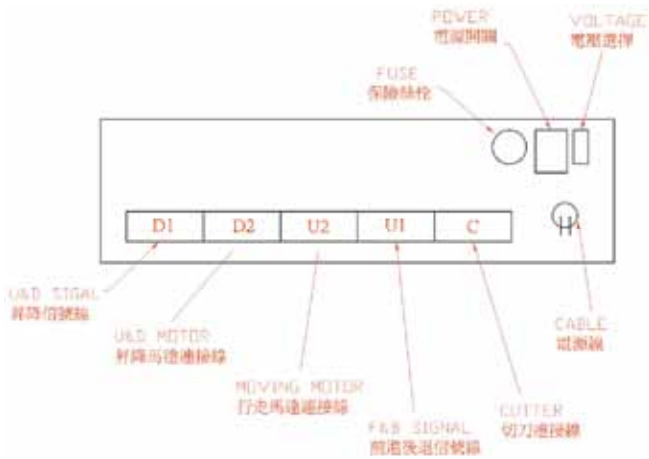
CS-600A 全自動控制器

電線裝配

- (1) 將電線依編號 C、U1、U2、D1、D2 接於自動控制箱底及上下座之電路板上。
- (2) 參考左圖及封面。

WIRE SETTING

- (1) CONNECT THE WIRES ON THE CONNECTORS UNDER THE CONTROL BOX AND TWO P.C.B.
- (2) PLEASE REFER TO THE PICTURES ON THE LEFT.



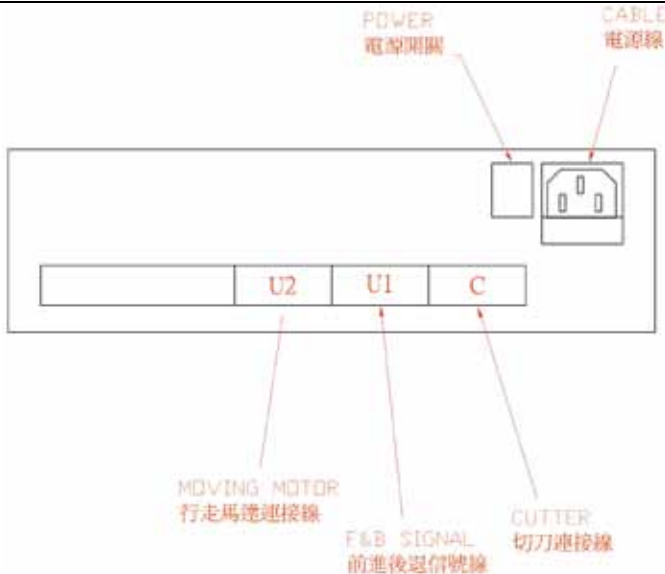
CS-600S 半自動控制器

電線裝配

- (1) 將電線依編號 C、U1、U2、D1、D2 接於自動控制箱底及上下座之電路板上。
- (2) 參考左圖及封面。

WIRE SETTING

- (1) CONNECT THE WIRES ON THE CONNECTORS UNDER THE CONTROL BOX AND TWO P.C.B.
- (2) PLEASE REFER TO THE PICTURES ON THE LEFT.

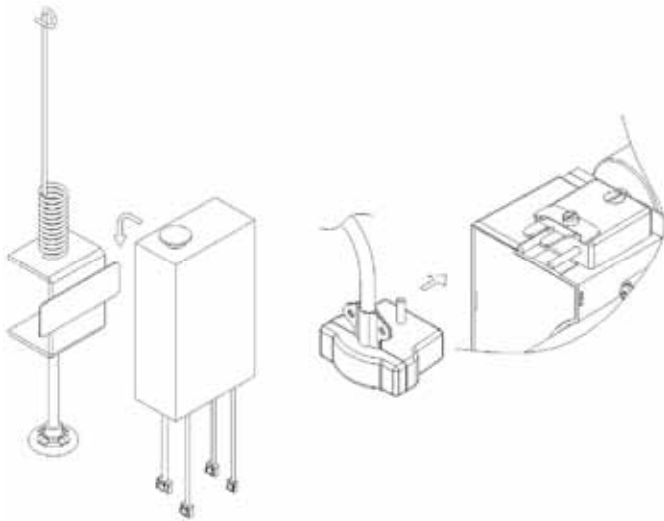


控制箱安裝

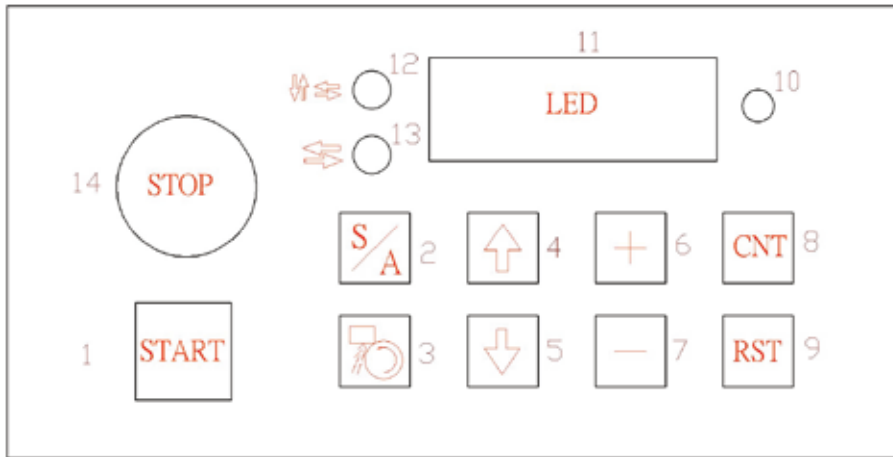
- (1) 裝入拉線彈簧座，掛上控制箱，連接電線。
- (2) 接電源，開控制箱開關，調整長度，按 START 切斷機來回一次。

CONTROL BOX

- (1) SCREW THE CABLE SUPPORT ON THE TABLE AND HANG UP THE CONTROL BOX THEN CONNECT THE CABLES.
- (2) CONNECT THE A.C. OUTLET AND TURN ON THEN ADJUST THE MOVING LENGTH OF THE CUTTER AND PRESS START TO CUT.



一. 按鍵說明 / INTRODUCTION



- | | |
|--------------------------------|-----------------------------|
| 1. 啓動鍵 START | 2. 全、半自動 AUTO / SEMI-AUTO |
| 3. 磨刀啓動 GRIDING | 4. 上升鍵 UP |
| 5. 下降鍵 DOWN | 6. 增加秒數 ADD MOVING TIME |
| 7. 減少秒數 REDUCE MOVING TIME | 8. 計數器 COUNTER |
| 9. 歸零鍵 RESET | 10. 計數指示燈 COUNTER INDICATOR |
| 11. LED顯示幕 LED DISPLAY | 12. 全自動指示燈 AUTO INDICATOR |
| 13. 半自動指示燈 SEMI-AUTO INDICATOR | 14. 停止鍵 STOP |

二. 啓動 / START

開啓電源後，LED 顯示幕會有數字及符號跳動，大約五秒後顯示幕右方有數字出現即可操作。

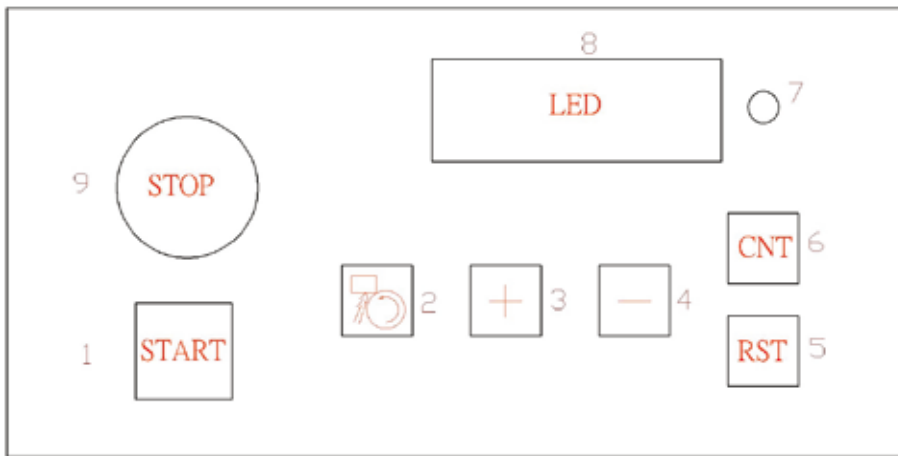
TURN ON THE POWER THERE ARE SOME NUMBER AND SYMBOLS DISPLAYING FOR ABOUT FIVE SECONDS, THEN CS-600A CAN BE OPERATED ONCE A NUMBER SHOWS IN THE RIGHT OF THE LED DISPLAY.

三. 功能介紹 / FUNCTION

| | | |
|----|---|---|
| 1 |  | <p>啓動鍵：按此按鍵動作開始。</p> <p>START：START TO CUT.</p> |
| 2 |  | <p>按此鍵可選擇半自動或全自動操作模式，指示燈會隨之亮起。</p> <p>SELECT AUTO OR SEMI-AUTO.</p> |
| 3 |  | <p>磨刀啓動：按此鍵圓刀片自動運轉約六秒，此時可作磨刀動作。</p> <p>GRINDIRT-ROUND KNIFE RUNNING FOR GRINDING AND AUTO STOP AFTER SIX SECONDS</p> |
| 4 |  | <p>按此鍵切斷機有上升動作，可作微調操作。</p> <p>UP：THIS KEY FOR END CUTTER GOING UP, AND SLIGHTLY ADJUSTMENT IS AVAILABLE.</p> |
| 5 |  | <p>按住此鍵切斷機有下降動作，可作微調操作。</p> <p>DOWN：THIS KEY FOR END CUTTER GOING DOWN, AND SLIGHTLY ADJUSTMENT IS AVAILABLE.</p> |
| 6 |  | <p>增加秒數鍵：按住此鍵三秒後顯示幕出現數值符號，代表行走馬達運轉秒數，此時可用『+』及『-』鍵來設定行走馬達運轉秒數，『+』表增加，『-』表減少，停止設定三秒後顯示幕自動回復原來數值，表示設定完成。</p> <p>PRESS THIS KEY ABOUT THREE SECONDS CONTINUOUSLY, THERE ARE SOME SYMBOLS DISPLAYING IN THE LED, AND AT THIS MOMENT YOU CAN USE 『+』 AND 『-』 KEY TO ADJUST THE RUNNING TIME OF THE MOVING MOTOR, STOP SETTING FOR THREE SECONDS AND THEN THE DISPLAY CAN CHANGE BACK TO ORIGINAL.</p> |
| 7 |  | 同上。 |
| 8 |  | <p>計數鍵：按一次此鍵則計數器啓動，計數燈亮開始計算所切層數，再按一次則關閉計數器，指示燈滅。</p> <p>COUNTER：PRESS ONCE TO TURN ON THE COUNTER FOR LAYERS, PRESS AGAIN TO TURN OFF THE COUNTER。</p> |
| 9 |  | <p>歸零鍵：按此鍵原有計數值復歸爲零，重新計算。</p> <p>RESET：RESET THE COUNTER FOR THE LAYERS COUNTING。</p> |
| 10 |  | <p>計數器指示燈：當計數器啓動時，則指示燈亮。</p> <p>COUNTER INDICATOR：LIGHTING WHEN TURN ON THE COUNTER.</p> |
| 11 |  | <p>LED 顯示器：顯示一切所需數值。</p> <p>LED DISPLAY：DISPLAYING.</p> |
| 12 |  | <p>全自動指示燈。</p> <p>AUTO INDICATOR：LIGHTING WHEN SELECT AUTO.</p> |
| 13 |  | <p>半自動指示燈。</p> <p>SEMI-AUTO INDICATOR：LIGHTING WHEN SELECT SEMI-AUTO.</p> |
| 14 |  | <p>按此鍵則停止切斷動作。</p> <p>STOP CUTTING。</p> |

CS-600S 半自動切斷機控制箱操作說明書

一. 按鍵說明 / INTRODUCTION



1. 啟動鍵 START

3. 增加秒數 ADD MOVING TIME

5. 歸零鍵 RESET

7. 計數指示燈 COUNTER INDICATOR

9. 停止鍵 STOP

2. 磨刀啟動 GRIDING

4. 減少秒數 REDUCE MOVING TIME

9. 計數器 COUNTER

8. LED顯示幕 LED DISPLAY

二. 啟動 / START

開啓電源後，LED 顯示幕會有數字及符號跳動，大約五秒後顯示幕右方有數字出現即可操作。

TURN ON THE POWER THERE ARE SOME NUMBER AND SYMBOLS DISPLAYING FOR ABOUT FIVE SECONDS, THEN CS-600A CAN BE OPERATED ONCE A NUMBER SHOWS IN THE RIGHT OF THE LED DISPLAY.

三. 功能介紹 / FUNCTION

| | | |
|---|---|---|
| 1 |  | <p>啓動鍵：按此按鍵動作開始。</p> <p>START : START TO CUT.</p> |
| 2 |  | <p>磨刀啓動：按此鍵圓刀片自動運轉約六秒，此時可作磨刀動作。</p> <p>GRINDIRT-ROUND KNIFE RUNNING FOR GRINDING AND AUTO STOP AFTER SIX SECONDS</p> |
| 3 |  | <p>增加秒數鍵：按住此鍵三秒後顯示幕出現數值符號，代表行走馬達運轉秒數，此時可用『+』及『-』鍵來設定行走馬達運轉秒數，『+』表增加，『-』表減少，停止設定三秒後顯示幕自動回復原來數值，表示設定完成。</p> <p>PRESS THIS KEY ABOUT THREE SECONDS CONTINUOUSLY, THERE ARE SOME SYMBOLS DISPLAYING IN THE LED, AND AT THIS MOMENT YOU CAN USE 『+』 AND 『-』 KEY TO ADJUST THE RUNNING TIME OF THE MOVING MOTOR, STOP SETTING FOR THREE SECONDS AND THEN THE DISPLAY CAN CHANGE BACK TO ORIGINAL.</p> |
| 4 |  | 同上。 |
| 5 |  | <p>歸零鍵：按此鍵原有計數值復歸爲零，重新計算。</p> <p>RESET : RESET THE COUNTER FOR THE LAYERS COUNTING .</p> |
| 6 |  | <p>計數鍵：按一次此鍵則計數器啓動，計數燈亮開始計算所切層數，再按一次則關閉計數器，指示燈滅。</p> <p>COUNTER : PRESS ONCE TO TURN ON THE COUNTER FOR LAYERS, PRESS AGAIN TO TURN OFF THE COUNTER .</p> |
| 7 |  | <p>計數器指示燈：當計數器啓動時，則指示燈亮。</p> <p>COUNTER INDISATOR : LIGHTING WHEN TURN ON THE COUNTER.</p> |
| 8 |  | <p>LED 顯示器：顯示一切所需數值。</p> <p>LED DISPLAY : DISPLAYING</p> |
| 9 |  | <p>按此鍵則停止切斷動作。</p> <p>STOP CUTTING .</p> |



CS600

高林股份有限公司 KAULIN MFG. CO., LTD.